

# Converting Colors

Hex(ED8878)

Have a look what the booklet for  
Hex(ED8878) contains.

<b>Hex(ED8878)</b> .....	3
<i><b>Conversions</b></i> .....	4
<i><b>Details</b></i> .....	6
<i><b>Harmonies</b></i> .....	11
<i><b>Previews</b></i> .....	23
<i><b>Color Blindness Simulation</b></i> .....	26
<i><b>CSS Examples</b></i> .....	29

**Color**

**Hex(ED8878)**

# Conversions

## Conversions Part 1

Format	Color
Hex	ED8878
RGB	237, 136, 120
RGB Percent	93%, 53%, 47%
CMY	0.0706, 0.4667, 0.5294
CMYK	0.00, 0.43, 0.49, 0.07
HSL	8°, 76%, 70%
HSV	8°, 49%, 93%
XYZ	47.1194, 36.9689, 22.4215
YIQ	164.3750, 65.3320, 16.4360

# Conversions

## Conversions Part 2

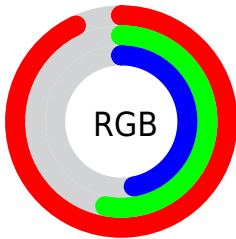
Format	Color
R <sub>Y</sub> B	237, 139, 120
Decimal	15566968
CIE Lab	67.25, 36.87, 25.44
CIE LCh	67, 44.793, 34.602
Yxy	36.9689, 0.4424, 0.3471
Android (android.graphics.Color)	4293757048 (0xFFED8878)
YUV	164.3750, -21.8769, 63.6921
Hunter-Lab	60.8021, 31.9274, 20.6975

# Details

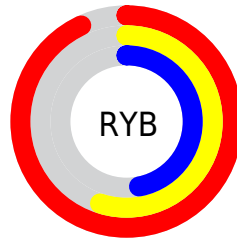
The Hex color **ED8878** is a light color, and the websafe version is hex **FF9999**. A complement of this color would be **78DDED**, and the grayscale version is **A5A5A5**.

A 20% lighter version of the original color is **FFBFAC**, and **B15447** is the 20% darker color. If you saturate the color by 10%, you get **ED7460**, and if you desaturate by 10%, it is **ED9C90**.

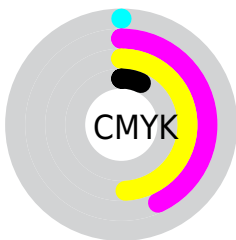
# Distribution



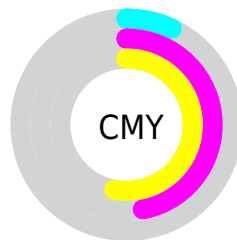
- Red (93%)
- Green (53%)
- Blue (47%)



- Red (93%)
- Yellow (55%)
- Blue (47%)



- Cyan (0%)
- Magenta (43%)
- Yellow (49%)
- Black (7%)



- Cyan (7%)
- Magenta (47%)
- Yellow (53%)

# Brightness & Saturation Gradients

These gradients show how the Hex color ED8878 changes by changing the brightness by 10 percent. The first figure shows a shift by +10% for each color and the second figure -10%.

Similar to the brightness gradients but the following saturation gradients show a change of the Hex color ED8878 by changing the saturation by 10% instead.



 ED8878

 ED8878

FFFFFF

 CF6E5F

 FFBFAC

 B15447

 FFDBC8

 943B31

 FFF8E4

 78221B

 5C0403

 400000

 260001

 000000

 ED8878

 ED8878

 ED7460

 ED9C90

 ED5F49

 EDB1A7

 ED4B31

 EDC5BF

 ED3619

 EDDAD7

 ED2202

 EDEEEE

 ED2000

 EDFFFF

# Harmonies

## Analogous

The Analogous color harmony consists of three colors that are next to each other on the color wheel.



EF829F



ED8878



D8955B

# Triad

The Triadic color harmony groups three colors that are evenly spaced from another and form a triangle on the color wheel.



ED8878



58B680



6DA6F4

# Complementary

The Complementary color scheme is a pair of colors which are on the opposite of each other on the color wheel.



ED8878



78DDED

# Split Complementary

Split-complementary colors differ from the complementary color scheme. The scheme consists of three colors, the original color and two neighbors of the complement color.



00B1EC



ED8878



00B9A9

# Square

The Square scheme is like the rectangle color scheme, but the four colors are evenly spaced on the color wheel.



ED8878



8CAF5F



00B7D0



B097E6

# Rectangle

The Rectangle color scheme consists of four colors that form a rectangle on the color wheel.



ED8878



C39F52



00B7D0



4FAAF4



# Sweetspot

The Sweet Spot groups the original color and five complimentary colors.



ED8878



FFDED9



ED78DD



806C69



000000



808080



# Same Dimension

The Same Dimension uses a secret algorithm to generate beautiful new colors.



ED8878



FF7D69



EDC278



756B6A



B51900



360700

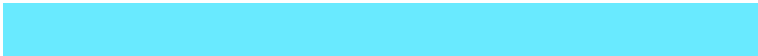


# Inverse Universe

The Inverse Universe completely reimagines the original color for something new.



78DDED



69EAFF



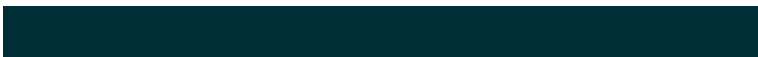
78A3ED



6A7475



009CB5



002E36



# Previews

## White Background



This preview shows how the Hex color ED8878 looks on a white background.

## Color Contrast Check

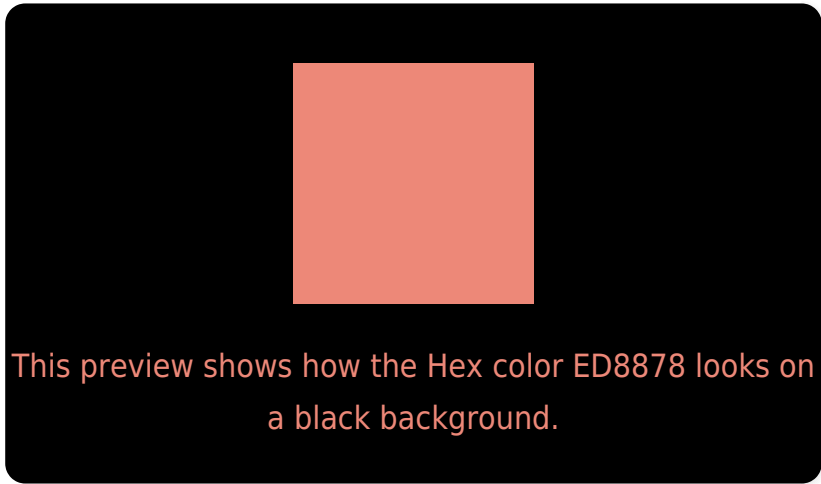
Large Text (above 18pt) WCAG AA × Fail

Any Text WCAG AA × Fail

Large Text (above 18pt) WCAG AAA × Fail

Any Text WCAG AAA × Fail

# Black Background



## Color Contrast Check

Large Text (above 18pt) WCAG AA ✓ Pass

Any Text WCAG AA ✓ Pass

Large Text (above 18pt) WCAG AAA ✓ Pass

Any Text WCAG AAA ✓ Pass

If you want to check with other color combinations, try the [Color Contrast Checker](#).



## Hex ED8878 Background



This preview shows how black text looks on a background with the Hex color ED8878.

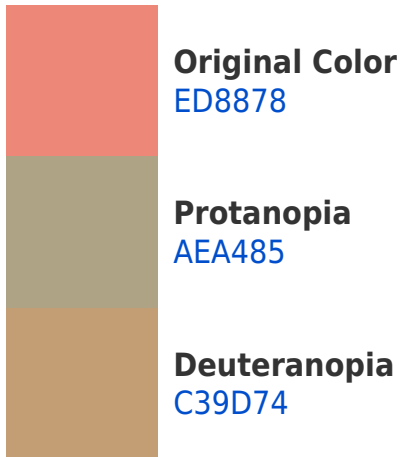


This preview shows how white text looks on a background with the Hex color ED8878.

# Color Blindness Simulation

Color vision deficiency is a very complex topic, and I could not describe the different causes any better than Wikipedia does, so if you want to learn more, you should check out their [article about color blindness](#).

## Dichromacy



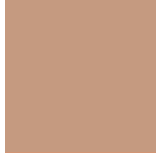


**Tritanopia**  
EF858E

# Trichromacy



**Original Color**  
ED8878



**Protanomaly**  
C59A80



**Deuteranomaly**  
D29575

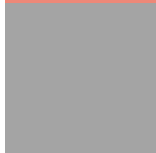


**Tritanomaly**  
EE8686

# Monochromacy



**Original Color**  
ED8878



**Achromatopsia**  
A4A4A4



**Achromatomaly**  
BF9A94

# CSS Examples

## Text

The CSS property to change the color of the text to Hex ED8878 is called "color". The color property can be set on classes, ids or directly on the HTML element.

This example shows how text in the color #ED8878 looks like.

```
.text, #text, p{  
    color:#ED8878  
}
```

If you want to add a text shadow in that color use the text-shadow property, you can generate a text shadow directly with our [CSS Text Shadow Generator](#).

Here you see how black text with a 4 pixel #ED8878 colored shadow looks like.

```
.shadow{ text-shadow: 4px 4px 2px #ED8878
}
```

## Border

The CSS property to change the border of an element to Hex ED8878 is called "border". The border property can be set on classes, ids or directly on the HTML element.

This example shows the color as border, it can be applied via the CSS property "border" or "border-color".

```
.border, #border, table{ border:4px solid
#ED8878 }
```

If only the border color should be changed use the property `border-color`.

```
.border{ border-color:#ED8878 }
```

If you want to add a box shadow in that color use:

Here you see how a box with a 4 pixel #ED8878 colored shadow looks like.

```
.boxshadow{ -moz-box-shadow:4px 4px 4px  
4px #ED8878; -webkit-box-shadow:4px 4px  
4px 4px #ED8878; box-shadow:4px 4px 4px  
4px #ED8878 }
```

# Background

The CSS property to change the background color of an element to Hex ED8878 is called "background". The background property can be set on classes, ids or directly on the HTML element.

```
.background, #background, body{  
background:#ED8878 }
```

If only the background color should be changed can be used:

```
.background{ background-color:#ED8878 }
```

This example shows the color as background, it is applied via the CSS property "background".

To optimize and compress your CSS code, you can use our [online CSS compressor and optimizer](#) based on csstidy. If you want to create a linear or radial gradient as background or border, check our [CSS Gradient Generator](#).



Hey! You found this booklet interesting? Support Converting Colors with the new Membership Option!

The pro membership hides all ads, plus gives you double the colors in the color bucket, and more awesome pro features!

**[Learn more, Memberships starting at \\$2.50/m!](#)**

**Follow me  
on Twitter!**

@ConvertingColor