

Converting Colors

Hex(EDA4B2)

Have a look what the booklet for
Hex(EDA4B2) contains.

Hex(EDA4B2)	3
<i>Conversions</i>	4
<i>Details</i>	6
<i>Harmonies</i>	11
<i>Previews</i>	23
<i>Color Blindness Simulation</i>	26
<i>CSS Examples</i>	29

Color

Hex(EDA4B2)

Conversions

Conversions Part 1

Format	Color
Hex	EDA4B2
RGB	237, 164, 178
RGB Percent	93%, 64%, 70%
CMY	0.0706, 0.3569, 0.3020
CMYK	0.00, 0.31, 0.25, 0.07
HSL	348°, 67%, 79%
HSV	348°, 31%, 93%
XYZ	56.2364, 47.7698, 48.3760
YIQ	187.4230, 39.0140, 19.8300

Conversions

Conversions Part 2

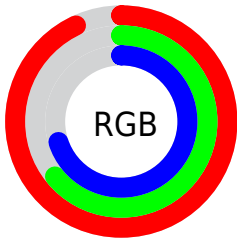
Format	Color
R _Y B	237, 164, 178
Decimal	15574194
CIE Lab	74.68, 28.90, 3.73
CIE LCh	75, 29.136, 7.361
Yxy	47.7698, 0.3690, 0.3135
Android (android.graphics.Color)	4293764274 (0xFFEDA4B2)
YUV	187.4230, -4.6455, 43.4790
Hunter-Lab	69.1157, 24.2851, 6.8823

Details

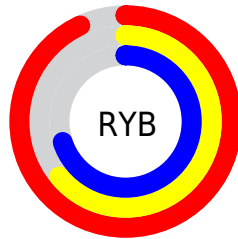
The Hex color **EDA4B2** is a light color, and the websafe version is hex **CC9999**. A complement of this color would be **A4EDDF**, and the grayscale version is **BBBBBB**.

A 20% lighter version of the original color is **FFDCEA**, and **B46F7D** is the 20% darker color. If you saturate the color by 10%, you get **ED8C9F**, and if you desaturate by 10%, it is **EDBCC5**.

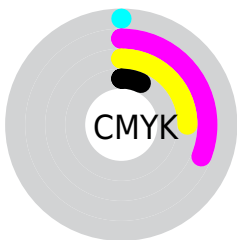
Distribution



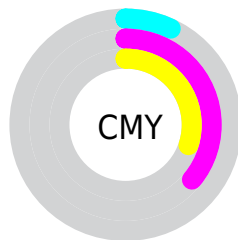
- Red (93%)
- Green (64%)
- Blue (70%)



- Red (93%)
- Yellow (64%)
- Blue (70%)



- Cyan (0%)
- Magenta (31%)
- Yellow (25%)
- Black (7%)



- Cyan (7%)
- Magenta (36%)
- Yellow (30%)

Brightness & Saturation Gradients

These gradients show how the Hex color EDA4B2 changes by changing the brightness by 10 percent. The first figure shows a shift by +10% for each color and the second figure -10%.

Similar to the brightness gradients but the following saturation gradients show a change of the Hex color EDA4B2 by changing the saturation by 10% instead.

 EDA4B2

 EDA4B2

FFFFFF

 D08997

 FFDCEA

 B46F7D

 FFF8FF

 985665

 7D3E4D

 632636

 490E21

 310009

 0F0000

 000000

 #EDA4B2

 #EDA4B2

 #ED8C9F

 #EDBCC5

 #ED758C

 #EDD3D8

 #ED5D79

 #EDEBEB

 #ED4565

 #EDFFFF

 #ED2D52

 #ED163F

 #ED002D

Harmonies

Analogous

The Analogous color harmony consists of three colors that are next to each other on the color wheel.



E0A7CD



EDA4B2



EBA798

Triad

The Triadic color harmony groups three colors that are evenly spaced from another and form a triangle on the color wheel.



EDA4B2



A7C08D



7BC0E8

Complementary

The Complementary color scheme is a pair of colors which are on the opposite of each other on the color wheel.



EDA4B2



A4EDDF

Split Complementary

Split-complementary colors differ from the complementary color scheme. The scheme consists of three colors, the original color and two neighbors of the complement color.



66C5D7



EDA4B2



88C5A2

Square

The Square scheme is like the rectangle color scheme, but the four colors are evenly spaced on the color wheel.



EDA4B2



C4B882



6EC7BE



9FB8ED

Rectangle

The Rectangle color scheme consists of four colors that form a rectangle on the color wheel.



EDA4B2



E3AC8C



6EC7BE



71C2E4

Sweetspot

The Sweet Spot groups the original color and five complimentary colors.



EDA4B2



FFE8EC



DEA4ED



807174



000000



808080

Same Dimension

The Same Dimension uses a secret algorithm to generate beautiful new colors.



EDA4B2



FFA1B3



EDBAA4



756A6C



B50023



36000A

Inverse Universe

The Inverse Universe completely reimagines the original color for something new.



EDA4B2



FFA1B3



A4D7ED



756A6C



B50023



36000A

Previews

White Background



This preview shows how the Hex color EDA4B2 looks on a white background.

Color Contrast Check

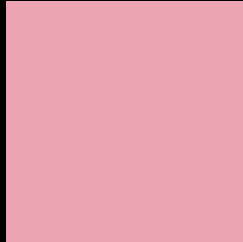
Large Text (above 18pt) WCAG AA × Fail

Any Text WCAG AA × Fail

Large Text (above 18pt) WCAG AAA × Fail

Any Text WCAG AAA × Fail

Black Background



This preview shows how the Hex color EDA4B2 looks on a black background.

Color Contrast Check

Large Text (above 18pt) WCAG AA ✓ Pass

Any Text WCAG AA ✓ Pass

Large Text (above 18pt) WCAG AAA ✓ Pass

Any Text WCAG AAA ✓ Pass

If you want to check with other color combinations, try the [Color Contrast Checker](#).

Hex EDA4B2 Background



This preview shows how black text looks on a background with the Hex color EDA4B2.

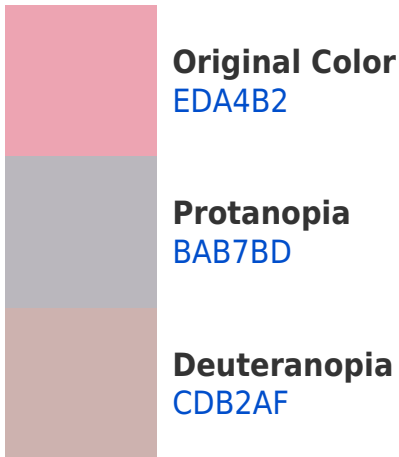


This preview shows how white text looks on a background with the Hex color EDA4B2.

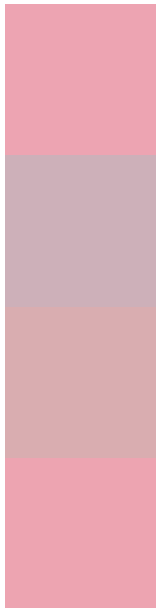
Color Blindness Simulation

Color vision deficiency is a very complex topic, and I could not describe the different causes any better than Wikipedia does, so if you want to learn more, you should check out their [article about color blindness](#).

Dichromacy



Trichromacy



Original Color
EDA4B2

Protanomaly
CDB0B9

Deuteranomaly
D9ADB0

Tritanomaly
EDA4B1

Monochromacy



Original Color
EDA4B2

Achromatopsia
BBBBBB

Achromatomaly
CDB3B8

CSS Examples

Text

The CSS property to change the color of the text to Hex EDA4B2 is called "color". The color property can be set on classes, ids or directly on the HTML element.

This example shows how text in the color #EDA4B2 looks like.

```
.text, #text, p{  
    color:#EDA4B2  
}
```

If you want to add a text shadow in that color use the text-shadow property, you can generate a text shadow directly with our [CSS Text Shadow Generator](#).

Here you see how black text with a 4 pixel #EDA4B2 colored shadow looks like.

```
.shadow{ text-shadow: 4px 4px 2px #EDA4B2
}
```

Border

The CSS property to change the border of an element to Hex EDA4B2 is called "border". The border property can be set on classes, ids or directly on the HTML element.

This example shows the color as border, it can be applied via the CSS property "border" or "border-color".

```
.border, #border, table{ border:4px solid
#EDA4B2 }
```

If only the border color should be changed use the property `border-color`.

```
.border{ border-color:#EDA4B2 }
```

If you want to add a box shadow in that color use:

Here you see how a box with a 4 pixel #EDA4B2 colored shadow looks like.

```
.boxshadow{ -moz-box-shadow:4px 4px 4px  
4px #EDA4B2; -webkit-box-shadow:4px 4px  
4px 4px #EDA4B2; box-shadow:4px 4px 4px  
4px #EDA4B2 }
```

Background

The CSS property to change the background color of an element to Hex EDA4B2 is called "background". The background property can be set on classes, ids or directly on the HTML element.

```
.background, #background, body{  
background:#EDA4B2 }
```

If only the background color should be changed can be used:

```
.background{ background-color:#EDA4B2 }
```

This example shows the color as background, it is applied via the CSS property "background".

To optimize and compress your CSS code, you can use our [online CSS compressor and optimizer](#) based on csstidy. If you want to create a linear or radial gradient as background or border, check our [CSS Gradient Generator](#).

Hey! You found this booklet interesting? Support Converting Colors with the new Membership Option!

The pro membership hides all ads, plus gives you double the colors in the color bucket, and more awesome pro features!

[Learn more, Memberships starting at \\$2.50/m!](#)

**Follow me
on Twitter!**

@ConvertingColor