

Converting Colors

Hex(EDA6BC)

Have a look what the booklet for
Hex(EDA6BC) contains.

Hex(EDA6BC)	3
<i>Conversions</i>	4
<i>Details</i>	6
<i>Harmonies</i>	11
<i>Previews</i>	23
<i>Color Blindness Simulation</i>	26
<i>CSS Examples</i>	29

Color

Hex(EDA6BC)

Conversions

Conversions Part 1

Format	Color
Hex	EDA6BC
RGB	237, 166, 188
RGB Percent	93%, 65%, 74%
CMY	0.0706, 0.3490, 0.2627
CMYK	0.00, 0.30, 0.21, 0.07
HSL	341°, 66%, 79%
HSV	341°, 30%, 93%
XYZ	57.6384, 48.9078, 53.9792
YIQ	189.7370, 35.2540, 21.8940

Conversions

Conversions Part 2

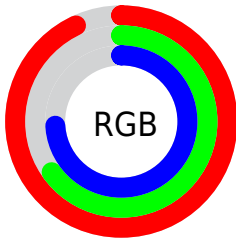
Format	Color
R _{YB}	237, 166, 188
Decimal	15574716
CIE Lab	75.39, 29.28, -0.71
CIE LCh	75, 29.284, 358.603
Yxy	48.9078, 0.3591, 0.3047
Android (android.graphics.Color)	4293764796 (0xFFEDA6BC)
YUV	189.7370, -0.8563, 41.4497
Hunter-Lab	69.9341, 24.7316, 3.1904

Details

The Hex color **EDA6BC** is a light color, and the websafe version is hex **CC9999**. A complement of this color would be **A6EDD7**, and the grayscale version is **BEBEBE**.

A 20% lighter version of the original color is **FFDEF4**, and **B47187** is the 20% darker color. If you saturate the color by 10%, you get **ED8EAC**, and if you desaturate by 10%, it is **EDBECC**.

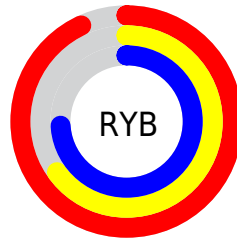
Distribution



Red (93%)

Green (65%)

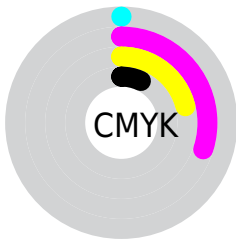
Blue (74%)



Red (93%)

Yellow (65%)

Blue (74%)

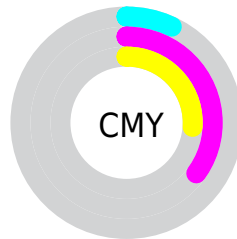


Cyan (0%)

Magenta (30%)

Yellow (21%)

Black (7%)



Cyan (7%)

Magenta (35%)

Yellow (26%)

Brightness & Saturation Gradients

These gradients show how the Hex color EDA6BC changes by changing the brightness by 10 percent. The first figure shows a shift by +10% for each color and the second figure -10%.

Similar to the brightness gradients but the following saturation gradients show a change of the Hex color EDA6BC by changing the saturation by 10% instead.

 EDA6BC

FFFFFF

 FFDEF4

 FFFAFF

 EDA6BC

 D08BA1

 B47187

 98586E

 7D4055

 63283E

 4A1028

 320014

 150000

 000000

 #EDA6BC

 #EDA6BC

 #ED8EAC

 #EDBECC

 #ED779B

 #EDD5DD

 #ED5F8B

 #EDEDED

 #ED477B

 #EDFFFD

 #ED2F6A

 #EDFFFF

 #ED185A

 #ED004A

 #ED0049

Harmonies

Analogous

The Analogous color harmony consists of three colors that are next to each other on the color wheel.



DBABD6



EDA6BC



F0A8A1

Triad

The Triadic color harmony groups three colors that are evenly spaced from another and form a triangle on the color wheel.



EDA6BC



B2C08A



74C4E7

Complementary

The Complementary color scheme is a pair of colors which are on the opposite of each other on the color wheel.



EDA6BC



A6EDD7

Split Complementary

Split-complementary colors differ from the complementary color scheme. The scheme consists of three colors, the original color and two neighbors of the complement color.



67C8D3



EDA6BC



93C69D

Square

The Square scheme is like the rectangle color scheme, but the four colors are evenly spaced on the color wheel.



EDA6BC



CEB884



76C9B7



96BDEF

Rectangle

The Rectangle color scheme consists of four colors that form a rectangle on the color wheel.



EDA6BC



E9AC92



76C9B7



6CC6E1

Sweetspot

The Sweet Spot groups the original color and five complimentary colors.



EDA6BC



FFE8EF



D7A6ED



807176



000000



808080

Same Dimension

The Same Dimension uses a secret algorithm to generate beautiful new colors.



EDA6BC



FFA3C0



EDB3A6



756A6D



B50038



360011

Inverse Universe

The Inverse Universe completely reimagines the original color for something new.



EDA6BC



FFA3C0



A6E0ED



756A6D



B50038



360011

Previews

White Background



This preview shows how the Hex color EDA6BC looks on a white background.

Color Contrast Check

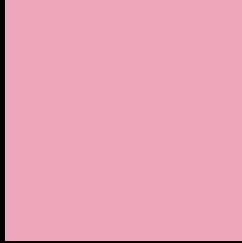
Large Text (above 18pt) WCAG AA × Fail

Any Text WCAG AA × Fail

Large Text (above 18pt) WCAG AAA × Fail

Any Text WCAG AAA × Fail

Black Background



This preview shows how the Hex color EDA6BC looks on a black background.

Color Contrast Check

Large Text (above 18pt) WCAG AA ✓ Pass

Any Text WCAG AA ✓ Pass

Large Text (above 18pt) WCAG AAA ✓ Pass

Any Text WCAG AAA ✓ Pass

If you want to check with other color combinations, try the [Color Contrast Checker](#).

Hex EDA6BC Background



This preview shows how black text looks on a background with the Hex color EDA6BC.

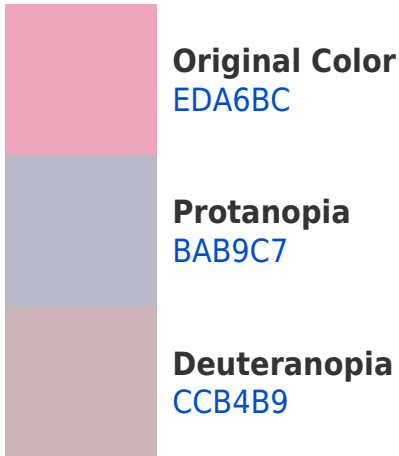


This preview shows how white text looks on a background with the Hex color EDA6BC.

Color Blindness Simulation

Color vision deficiency is a very complex topic, and I could not describe the different causes any better than Wikipedia does, so if you want to learn more, you should check out their [article about color blindness](#).

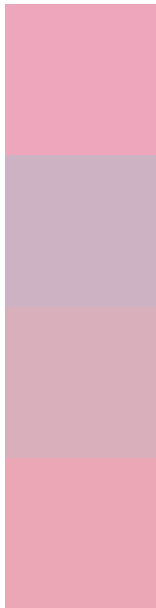
Dichromacy





Tritanopia
ECA7B4

Trichromacy



Original Color
EDA6BC

Protanomaly
CDB2C3

Deuteranomaly
D8AFBA

Tritanomaly
ECA7B7

Monochromacy



Original Color
EDA6BC

Achromatopsia
BEBEBE

Achromatomaly
CFB5BD

CSS Examples

Text

The CSS property to change the color of the text to Hex EDA6BC is called "color". The color property can be set on classes, ids or directly on the HTML element.

This example shows how text in the color #EDA6BC looks like.

```
.text, #text, p{  
    color:#EDA6BC  
}
```

If you want to add a text shadow in that color use the text-shadow property, you can generate a text shadow directly with our [CSS Text Shadow Generator](#).

Here you see how black text with a 4 pixel #EDA6BC colored shadow looks like.

```
.shadow{ text-shadow: 4px 4px 2px #EDA6BC
}
```

Border

The CSS property to change the border of an element to Hex EDA6BC is called "border". The border property can be set on classes, ids or directly on the HTML element.

This example shows the color as border, it can be applied via the CSS property "border" or "border-color".

```
.border, #border, table{ border:4px solid
#EDA6BC }
```

If only the border color should be changed use the property `border-color`.

```
.border{ border-color:#EDA6BC }
```

If you want to add a box shadow in that color use:

Here you see how a box with a 4 pixel #EDA6BC colored shadow looks like.

```
.boxshadow{ -moz-box-shadow:4px 4px 4px  
4px #EDA6BC; -webkit-box-shadow:4px 4px  
4px 4px #EDA6BC; box-shadow:4px 4px 4px  
4px #EDA6BC }
```

Background

The CSS property to change the background color of an element to Hex EDA6BC is called "background". The background property can be set on classes, ids or directly on the HTML element.

```
.background, #background, body{  
background:#EDA6BC }
```

If only the background color should be changed can be used:

```
.background{ background-color:#EDA6BC }
```

This example shows the color as background, it is applied via the CSS property "background".

To optimize and compress your CSS code, you can use our [online CSS compressor and optimizer](#) based on csstidy. If you want to create a linear or radial gradient as background or border, check our [CSS Gradient Generator](#).

Hey! You found this booklet interesting? Support Converting Colors with the new Membership Option!

The pro membership hides all ads, plus gives you double the colors in the color bucket, and more awesome pro features!

[Learn more, Memberships starting at \\$2.50/m!](#)

**Follow me
on Twitter!**

@ConvertingColor