

Converting Colors

Hex(EDABB D)

Have a look what the booklet for
Hex(EDABBD) contains.

Hex(EDABBD)	3
<i>Conversions</i>	4
<i>Details</i>	6
<i>Harmonies</i>	11
<i>Previews</i>	23
<i>Color Blindness Simulation</i>	26
<i>CSS Examples</i>	29

Color

Hex(EDABB D)

Conversions

Conversions Part 1

Format	Color
Hex	EDABBD
RGB	237, 171, 189
RGB Percent	93%, 67%, 74%
CMY	0.0706, 0.3294, 0.2588
CMYK	0.00, 0.28, 0.20, 0.07
HSL	344°, 65%, 80%
HSV	344°, 28%, 93%
XYZ	58.6733, 50.8045, 54.8579
YIQ	192.7860, 33.5580, 19.5900

Conversions

Conversions Part 2

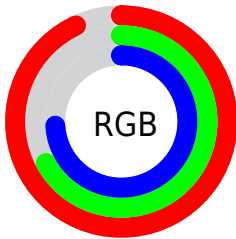
Format	Color
R _{YB}	237, 171, 189
Decimal	15575997
CIE Lab	76.56, 26.77, 0.44
CIE LCh	77, 26.769, 0.948
Yxy	50.8045, 0.3570, 0.3092
Android (android.graphics.Color)	4293766077 (0xFFEDABBD)
YUV	192.7860, -1.8665, 38.7757
Hunter-Lab	71.2773, 22.2006, 4.2620

Details

The Hex color **EDABBD** is a light color, and the websafe version is hex **CC9999**. A complement of this color would be **ABEDDB**, and the grayscale version is **C1C1C1**.

A 20% lighter version of the original color is **FFE3F5**, and **B47688** is the 20% darker color. If you saturate the color by 10%, you get **ED93AC**, and if you desaturate by 10%, it is **EDC3CE**.

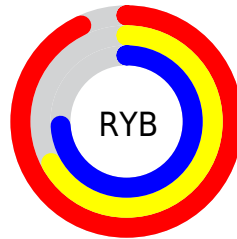
Distribution



Red (93%)

Green (67%)

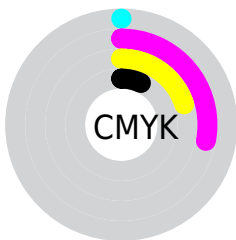
Blue (74%)



Red (93%)

Yellow (67%)

Blue (74%)

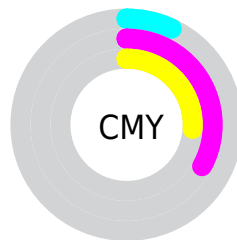


Cyan (0%)

Magenta (28%)

Yellow (20%)

Black (7%)



Cyan (7%)

Magenta (33%)

Yellow (26%)

Brightness & Saturation Gradients

These gradients show how the Hex color EDABBD changes by changing the brightness by 10 percent. The first figure shows a shift by +10% for each color and the second figure -10%.

Similar to the brightness gradients but the following saturation gradients show a change of the Hex color EDABBD by changing the saturation by 10% instead.

 EDABBD

 EDABBD

FFFFFF

 D090A2

 FFE3F5

 B47688

 995D6E

 7E4556

 642D3F

 4A1629

 320015

 190001

 000000

 EDABBD

 EDABBD

 ED93AC

 EDC3CE

 ED7C9B

 EDDADF

 ED6489

 EDF2F1

 ED4C78

 EDFFFF

 ED3467

 ED1D56

 ED0544

 ED0041

Harmonies

Analogous

The Analogous color harmony consists of three colors that are next to each other on the color wheel.



DEAFD5



EDABBD



EFADA5

Triad

The Triadic color harmony groups three colors that are evenly spaced from another and form a triangle on the color wheel.



EDABBD



B4C392



81C6E7

Complementary

The Complementary color scheme is a pair of colors which are on the opposite of each other on the color wheel.



EDABBD



ABEDDB

Split Complementary

Split-complementary colors differ from the complementary color scheme. The scheme consists of three colors, the original color and two neighbors of the complement color.



74CAD5



EDABBD



97C8A4

Square

The Square scheme is like the rectangle color scheme, but the four colors are evenly spaced on the color wheel.



EDABBD



CEBC8C



7FCBBD



A0BFEE

Rectangle

The Rectangle color scheme consists of four colors that form a rectangle on the color wheel.



EDABBD



E8B197



7FCBBD



7AC8E2

Sweetspot

The Sweet Spot groups the original color and five complimentary colors.



EDABBD



FFEBF0



DAABED



807376



000000



808080

Same Dimension

The Same Dimension uses a secret algorithm to generate beautiful new colors.



EDABBD



FFABC2



EDB9AB



756A6D



B50031



36000F

Inverse Universe

The Inverse Universe completely reimagines the original color for something new.



EDABBD



FFABC2



ABDFED



756A6D



B50031



36000F

Previews

White Background



This preview shows how the Hex color EDABBD looks on a white background.

Color Contrast Check

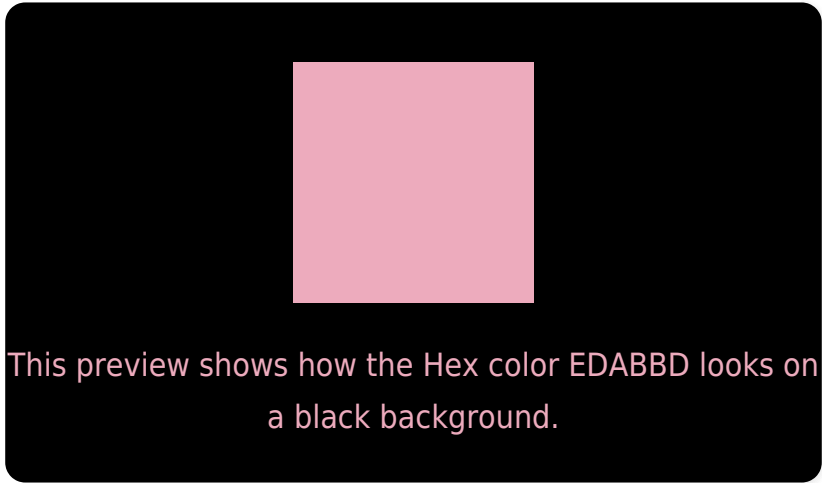
Large Text (above 18pt) WCAG AA × Fail

Any Text WCAG AA × Fail

Large Text (above 18pt) WCAG AAA × Fail

Any Text WCAG AAA × Fail

Black Background



Color Contrast Check

Large Text (above 18pt) WCAG AA ✓ Pass

Any Text WCAG AA ✓ Pass

Large Text (above 18pt) WCAG AAA ✓ Pass

Any Text WCAG AAA ✓ Pass

If you want to check with other color combinations, try the [Color Contrast Checker](#).

Hex EDABBD Background



This preview shows how black text looks on a background with the Hex color EDABBD.

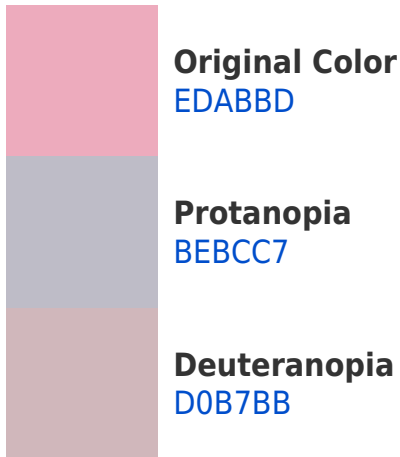


This preview shows how white text looks on a background with the Hex color EDABBD.

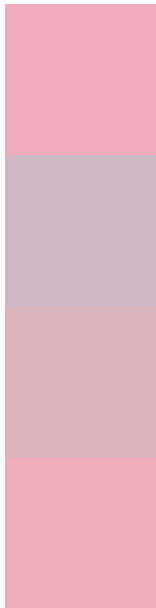
Color Blindness Simulation

Color vision deficiency is a very complex topic, and I could not describe the different causes any better than Wikipedia does, so if you want to learn more, you should check out their [article about color blindness](#).

Dichromacy



Trichromacy



Original Color
EDABBD

Protanomaly
CFB6C3

Deuteranomaly
DBB3BC

Tritanomaly
EDACBA

Monochromacy



Original Color
EDABBD

Achromatopsia
C1C1C1

Achromatomaly
D1B9C0

CSS Examples

Text

The CSS property to change the color of the text to Hex EDABBD is called "color". The color property can be set on classes, ids or directly on the HTML element.

This example shows how text in the color #EDABBD looks like.

```
.text, #text, p{  
  color:#EDABBD  
}
```

If you want to add a text shadow in that color use the text-shadow property, you can generate a text shadow directly with our [CSS Text Shadow Generator](#).

Here you see how black text with a 4 pixel #EDABBD colored shadow looks like.

```
.shadow{ text-shadow: 4px 4px 2px #EDABBD  
}
```

Border

The CSS property to change the border of an element to Hex EDABBD is called "border". The border property can be set on classes, ids or directly on the HTML element.

This example shows the color as border, it can be applied via the CSS property "border" or "border-color".

```
.border, #border, table{ border:4px solid  
#EDABBD }
```

If only the border color should be changed use the property `border-color`.

```
.border{ border-color:#EDABBD }
```

If you want to add a box shadow in that color use:

Here you see how a box with a 4 pixel #EDABBD colored shadow looks like.

```
.boxshadow{ -moz-box-shadow:4px 4px 4px  
4px #EDABBD; -webkit-box-shadow:4px 4px  
4px 4px #EDABBD; box-shadow:4px 4px 4px  
4px #EDABBD }
```

Background

The CSS property to change the background color of an element to Hex EDABBD is called "background". The background property can be set on classes, ids or directly on the HTML element.

```
.background, #background, body{  
background:#EDABBD }
```

If only the background color should be changed can be used:

```
.background{ background-color:#EDABBD }
```

This example shows the color as background, it is applied via the CSS property "background".

To optimize and compress your CSS code, you can use our [online CSS compressor and optimizer](#) based on csstidy. If you want to create a linear or radial gradient as background or border, check our [CSS Gradient Generator](#).

Hey! You found this booklet interesting? Support Converting Colors with the new Membership Option!

The pro membership hides all ads, plus gives you double the colors in the color bucket, and more awesome pro features!

[Learn more, Memberships starting at \\$2.50/m!](#)

**Follow me
on Twitter!**

@ConvertingColor