

Converting Colors

Hex(EDB4A5)

Have a look what the booklet for
Hex(EDB4A5) contains.

Hex(EDB4A5)	3
<i>Conversions</i>	4
<i>Details</i>	6
<i>Harmonies</i>	11
<i>Previews</i>	23
<i>Color Blindness Simulation</i>	26
<i>CSS Examples</i>	29

Color

Hex(EDB4A5)

Conversions

Conversions Part 1

Format	Color
Hex	EDB4A5
RGB	237, 180, 165
RGB Percent	93%, 71%, 65%
CMY	0.0706, 0.2941, 0.3529
CMYK	0.00, 0.24, 0.30, 0.07
HSL	13°, 67%, 79%
HSV	13°, 30%, 93%
XYZ	58.0378, 53.3637, 42.8386
YIQ	195.3330, 38.7870, 7.4190

Conversions

Conversions Part 2

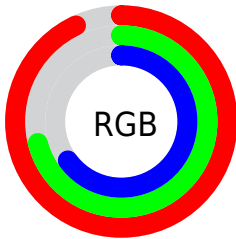
Format	Color
R _Y B	237, 184, 165
Decimal	15578277
CIE Lab	78.09, 18.63, 15.67
CIE LCh	78, 24.348, 40.066
Yxy	53.3637, 0.3763, 0.3460
Android (android.graphics.Color)	4293768357 (0xFFEDB4A5)
YUV	195.3330, -14.9542, 36.5420
Hunter-Lab	73.0504, 13.9782, 16.3662

Details

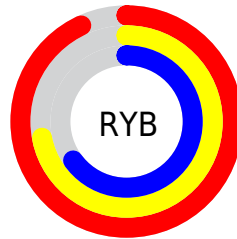
The Hex color **EDB4A5** is a light color, and the websafe version is hex **FFCCCC**. A complement of this color would be **A5DEED**, and the grayscale version is **C3C3C3**.

A 20% lighter version of the original color is **FFECDC**, and **B47F71** is the 20% darker color. If you saturate the color by 10%, you get **EDA18D**, and if you desaturate by 10%, it is **EDC7BD**.

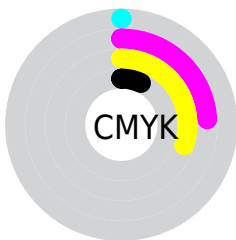
Distribution



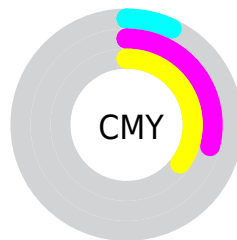
- Red (93%)
- Green (71%)
- Blue (65%)



- Red (93%)
- Yellow (72%)
- Blue (65%)



- Cyan (0%)
- Magenta (24%)
- Yellow (30%)
- Black (7%)



- Cyan (7%)
- Magenta (29%)
- Yellow (35%)

Brightness & Saturation Gradients

These gradients show how the Hex color EDB4A5 changes by changing the brightness by 10 percent. The first figure shows a shift by +10% for each color and the second figure -10%.

Similar to the brightness gradients but the following saturation gradients show a change of the Hex color EDB4A5 by changing the saturation by 10% instead.

 EDB4A5

 EDB4A5

FFFFFF

 D0998B

 FFECDC

 B47F71

 FFFFF9

 986659

 7D4E41

 63362B

 492016

 320B00

 160000

 000000

 EDB4A5

 EDB4A5

 EDA18D

 EDC7BD

 ED8E76

 EDDAD4

 ED7C5E

 EDECEC

 ED6946

 EDFFFF

 ED562E

 ED4317

 ED3100

Harmonies

Analogous

The Analogous color harmony consists of three colors that are next to each other on the color wheel.



EFB1BA



EDB4A5



E0BB97

Triad

The Triadic color harmony groups three colors that are evenly spaced from another and form a triangle on the color wheel.



EDB4A5



98CDB1



B1C1ED

Complementary

The Complementary color scheme is a pair of colors which are on the opposite of each other on the color wheel.



EDB4A5



A5DEED

Split Complementary

Split-complementary colors differ from the complementary color scheme. The scheme consists of three colors, the original color and two neighbors of the complement color.



94C8EB



EDB4A5



85CEC8

Square

The Square scheme is like the rectangle color scheme, but the four colors are evenly spaced on the color wheel.



EDB4A5



B1C99E



82CCDD



CEB9E4

Rectangle

The Rectangle color scheme consists of four colors that form a rectangle on the color wheel.



EDB4A5



D2C094



82CCDD



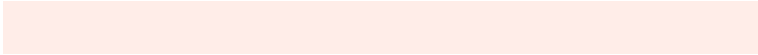
A6C3EE

Sweetspot

The Sweet Spot groups the original color and five complimentary colors.



EDB4A5



FFEDE8



EDA5DF



807471



000000



808080

Same Dimension

The Same Dimension uses a secret algorithm to generate beautiful new colors.



EDB4A5



FFB6A3



EDD7A5



756C6A



B52600



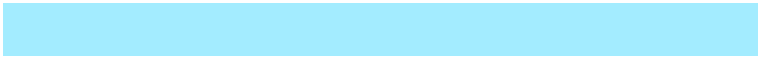
360B00

Inverse Universe

The Inverse Universe completely reimagines the original color for something new.



A5DEED



A3ECFF



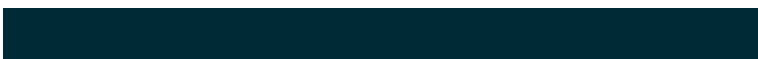
A5BBED



6A7375



008FB5



002A36

Previews

White Background



This preview shows how the Hex color EDB4A5 looks on a white background.

Color Contrast Check

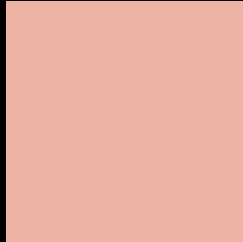
Large Text (above 18pt) WCAG AA × Fail

Any Text WCAG AA × Fail

Large Text (above 18pt) WCAG AAA × Fail

Any Text WCAG AAA × Fail

Black Background



This preview shows how the Hex color EDB4A5 looks on a black background.

Color Contrast Check

Large Text (above 18pt) WCAG AA ✓ Pass

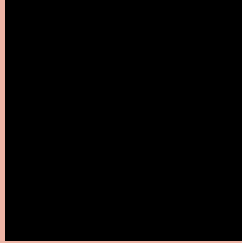
Any Text WCAG AA ✓ Pass

Large Text (above 18pt) WCAG AAA ✓ Pass

Any Text WCAG AAA ✓ Pass

If you want to check with other color combinations, try the [Color Contrast Checker](#).

Hex EDB4A5 Background



This preview shows how black text looks on a background with the Hex color EDB4A5.

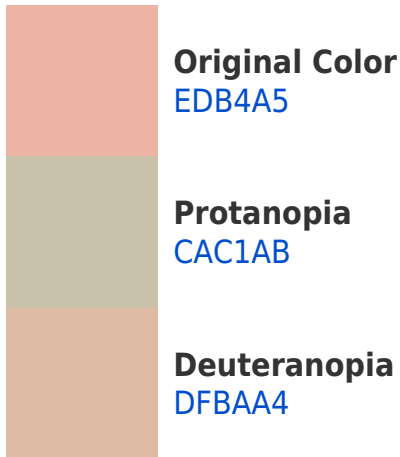


This preview shows how white text looks on a background with the Hex color EDB4A5.

Color Blindness Simulation

Color vision deficiency is a very complex topic, and I could not describe the different causes any better than Wikipedia does, so if you want to learn more, you should check out their [article about color blindness](#).

Dichromacy



Trichromacy



Original Color
EDB4A5

Protanomaly
D7BCA9

Deuteranomaly
E4B8A4

Tritanomaly
EFB1B5

Monochromacy



Original Color
EDB4A5

Achromatopsia
C3C3C3

Achromatomaly
D2BEB8

CSS Examples

Text

The CSS property to change the color of the text to Hex EDB4A5 is called "color". The color property can be set on classes, ids or directly on the HTML element.

This example shows how text in the color #EDB4A5 looks like.

```
.text, #text, p{  
    color:#EDB4A5  
}
```

If you want to add a text shadow in that color use the text-shadow property, you can generate a text shadow directly with our [CSS Text Shadow Generator](#).

Here you see how black text with a 4 pixel #EDB4A5 colored shadow looks like.

```
.shadow{ text-shadow: 4px 4px 2px #EDB4A5
}
```

Border

The CSS property to change the border of an element to Hex EDB4A5 is called "border". The border property can be set on classes, ids or directly on the HTML element.

This example shows the color as border, it can be applied via the CSS property "border" or "border-color".

```
.border, #border, table{ border:4px solid
#EDB4A5 }
```

If only the border color should be changed use the property `border-color`.

```
.border{ border-color:#EDB4A5 }
```

If you want to add a box shadow in that color use:

Here you see how a box with a 4 pixel #EDB4A5 colored shadow looks like.

```
.boxshadow{ -moz-box-shadow:4px 4px 4px  
4px #EDB4A5; -webkit-box-shadow:4px 4px  
4px 4px #EDB4A5; box-shadow:4px 4px 4px  
4px #EDB4A5 }
```

Background

The CSS property to change the background color of an element to Hex EDB4A5 is called "background". The background property can be set on classes, ids or directly on the HTML element.

```
.background, #background, body{  
background:#EDB4A5 }
```

If only the background color should be changed can be used:

```
.background{ background-color:#EDB4A5 }
```

This example shows the color as background, it is applied via the CSS property "background".

To optimize and compress your CSS code, you can use our [online CSS compressor and optimizer](#) based on csstidy. If you want to create a linear or radial gradient as background or border, check our [CSS Gradient Generator](#).

Hey! You found this booklet interesting? Support Converting Colors with the new Membership Option!

The pro membership hides all ads, plus gives you double the colors in the color bucket, and more awesome pro features!

[Learn more, Memberships starting at \\$2.50/m!](#)

**Follow me
on Twitter!**

@ConvertingColor