

# Converting Colors

Hex(EDB6A4)

Have a look what the booklet for  
Hex(EDB6A4) contains.

<b>Hex(EDB6A4)</b> .....	3
<i><b>Conversions</b></i> .....	4
<i><b>Details</b></i> .....	6
<i><b>Harmonies</b></i> .....	11
<i><b>Previews</b></i> .....	23
<i><b>Color Blindness Simulation</b></i> .....	26
<i><b>CSS Examples</b></i> .....	29

# **Color**

**Hex(EDB6A4)**

# Conversions

## Conversions Part 1

Format	Color
Hex	EDB6A4
RGB	237, 182, 164
RGB Percent	93%, 71%, 64%
CMY	0.0706, 0.2863, 0.3569
CMYK	0.00, 0.23, 0.31, 0.07
HSL	15°, 67%, 79%
HSV	15°, 31%, 93%
XYZ	58.3538, 54.1408, 42.4966
YIQ	196.3930, 38.5580, 6.0620

# Conversions

## Conversions Part 2

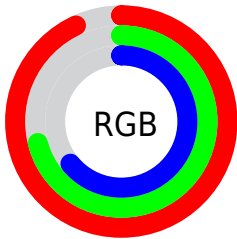
Format	Color
<a href="#">RYB</a>	<a href="#">237, 188, 164</a>
Decimal	<a href="#">15578788</a>
CIELab	<a href="#">78.54, 17.44, 16.85</a>
CIELCh	<a href="#">79, 24.250, 44.004</a>
Yxy	<a href="#">54.1408, 0.3765, 0.3493</a>
Android (android.graphics.Color)	<a href="#">4293768868 (0xFFEDB6A4)</a>
YUV	<a href="#">196.3930, -15.9697, 35.6123</a>
Hunter-Lab	<a href="#">73.5804, 12.7959, 17.2632</a>

# Details

The Hex color **EDB6A4** is a light color, and the websafe version is hex **FFCCCC**. A complement of this color would be **A4DBED**, and the grayscale version is **C5C5C5**.

A 20% lighter version of the original color is **FFEEDB**, and **B48170** is the 20% darker color. If you saturate the color by 10%, you get **EDA48C**, and if you desaturate by 10%, it is **EDC8BC**.

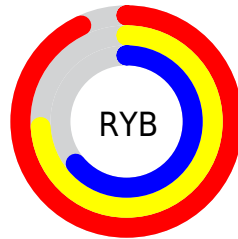
# Distribution



Red (93%)

Green (71%)

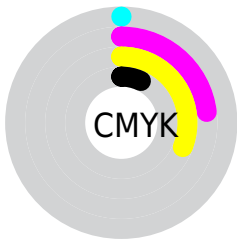
Blue (64%)



Red (93%)

Yellow (74%)

Blue (64%)

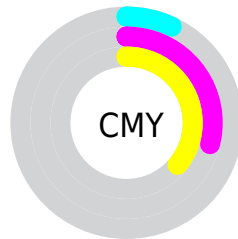


Cyan (0%)

Magenta (23%)

Yellow (31%)

Black (7%)



Cyan (7%)

Magenta (29%)

Yellow (36%)

# Brightness & Saturation Gradients

These gradients show how the Hex color EDB6A4 changes by changing the brightness by 10 percent. The first figure shows a shift by +10% for each color and the second figure -10%.

Similar to the brightness gradients but the following saturation gradients show a change of the Hex color EDB6A4 by changing the saturation by 10% instead.



 EDB6A4

 EDB6A4

FFFFFF

 D09B8A

 FFEEDB

 B48170

 FFFFF7

 986858

 7D4F40

 63382A

 492216

 320D00

 170001

 000000

 EDB6A4

 EDB6A4

 EDA48C

 EDC8BC

 ED9275

 EDDAD3

 ED805D

 EDECEB

 ED6F45

 EDFDFF

 ED5D2D

 EDFFFF

 ED4B16

 ED3A00

# Harmonies

## Analogous

The Analogous color harmony consists of three colors that are next to each other on the color wheel.



F1B2B8



EDB6A4



DEBD98

# Triad

The Triadic color harmony groups three colors that are evenly spaced from another and form a triangle on the color wheel.



EDB6A4



96CEB5



B6C1EE

# Complementary

The Complementary color scheme is a pair of colors which are on the opposite of each other on the color wheel.



EDB6A4



A4DBED

# Split Complementary

Split-complementary colors differ from the complementary color scheme. The scheme consists of three colors, the original color and two neighbors of the complement color.



98C8ED



EDB6A4



85CFCC

# Square

The Square scheme is like the rectangle color scheme, but the four colors are evenly spaced on the color wheel.



EDB6A4



AFCAA1



85CDE1



D3B9E3

# Rectangle

The Rectangle color scheme consists of four colors that form a rectangle on the color wheel.



EDB6A4



D0C295



85CDE1



ACC3EF



# Sweetspot

The Sweet Spot groups the original color and five complimentary colors.



EDB6A4



FFEEE8



EDA4DC



807571



000000



808080



# Same Dimension

The Same Dimension uses a secret algorithm to generate beautiful new colors.



EDB6A4



FFB8A1



EDDAA4



756C6A



B52D00



360D00

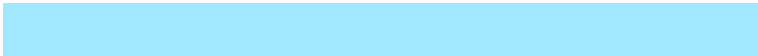


# Inverse Universe

The Inverse Universe completely reimagines the original color for something new.



A4DBED



A1E8FF



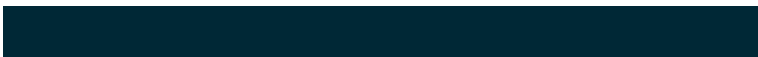
A4B7ED



6A7275



0088B5



002836



# Previews

## White Background



This preview shows how the Hex color EDB6A4 looks on a white background.

## Color Contrast Check

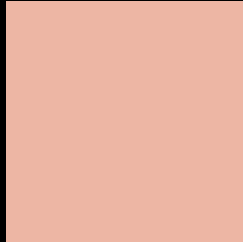
Large Text (above 18pt) WCAG AA × Fail

Any Text WCAG AA × Fail

Large Text (above 18pt) WCAG AAA × Fail

Any Text WCAG AAA × Fail

# Black Background



This preview shows how the Hex color EDB6A4 looks on a black background.

## Color Contrast Check

Large Text (above 18pt) WCAG AA ✓ Pass

Any Text WCAG AA ✓ Pass

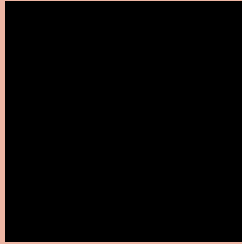
Large Text (above 18pt) WCAG AAA ✓ Pass

Any Text WCAG AAA ✓ Pass

If you want to check with other color combinations, try the [Color Contrast Checker](#).



## Hex EDB6A4 Background



This preview shows how black text looks on a background with the Hex color EDB6A4.

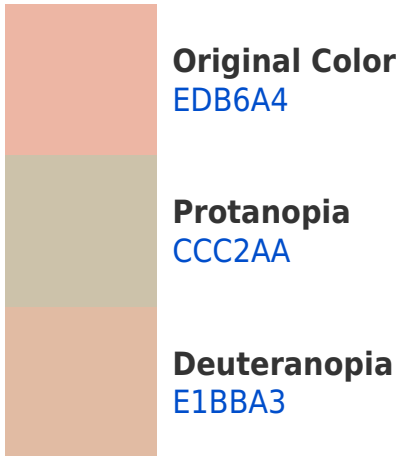


This preview shows how white text looks on a background with the Hex color EDB6A4.

# Color Blindness Simulation

Color vision deficiency is a very complex topic, and I could not describe the different causes any better than Wikipedia does, so if you want to learn more, you should check out their [article about color blindness](#).

## Dichromacy





# Trichromacy



**Original Color**  
EDB6A4

**Protanomaly**  
D8BEA8

**Deuteranomaly**  
E5B9A3

**Tritanomaly**  
EFB3B6

# Monochromacy



**Original Color**  
EDB6A4

**Achromatopsia**  
C4C4C4

**Achromatomaly**  
D3BFB8

# CSS Examples

## Text

The CSS property to change the color of the text to Hex EDB6A4 is called "color". The color property can be set on classes, ids or directly on the HTML element.

This example shows how text in the color #EDB6A4 looks like.

```
.text, #text, p{  
    color:#EDB6A4  
}
```

If you want to add a text shadow in that color use the text-shadow property, you can generate a text shadow directly with our [CSS Text Shadow Generator](#).

Here you see how black text with a 4 pixel #EDB6A4 colored shadow looks like.

```
.shadow{ text-shadow: 4px 4px 2px #EDB6A4 }  
}
```

## Border

The CSS property to change the border of an element to Hex EDB6A4 is called "border". The border property can be set on classes, ids or directly on the HTML element.

This example shows the color as border, it can be applied via the CSS property "border" or "border-color".

```
.border, #border, table{ border:4px solid #EDB6A4 }  
}
```

If only the border color should be changed use the property `border-color`.

```
.border{ border-color:#EDB6A4 }
```

If you want to add a box shadow in that color use:

Here you see how a box with a 4 pixel #EDB6A4 colored shadow looks like.

```
.boxshadow{ -moz-box-shadow:4px 4px 4px  
4px #EDB6A4; -webkit-box-shadow:4px 4px  
4px 4px #EDB6A4; box-shadow:4px 4px 4px  
4px #EDB6A4 }
```

# Background

The CSS property to change the background color of an element to Hex EDB6A4 is called "background". The background property can be set on classes, ids or directly on the HTML element.

```
.background, #background, body{  
background:#EDB6A4 }
```

If only the background color should be changed can be used:

```
.background{ background-color:#EDB6A4 }
```

This example shows the color as background, it is applied via the CSS property "background".

To optimize and compress your CSS code, you can use our [online CSS compressor and optimizer](#) based on csstidy. If you want to create a linear or radial gradient as background or border, check our [CSS Gradient Generator](#).



Hey! You found this booklet interesting? Support Converting Colors with the new Membership Option!

The pro membership hides all ads, plus gives you double the colors in the color bucket, and more awesome pro features!

**[Learn more, Memberships starting at \\$2.50/m!](#)**

**Follow me  
on Twitter!**

@ConvertingColor