

Converting Colors

Hex(EDBEB0)

Have a look what the booklet for
Hex(EDBEB0) contains.

| | |
|--|----|
| Hex(EDBEB0) | 3 |
| <i>Conversions</i> | 4 |
| <i>Details</i> | 6 |
| <i>Harmonies</i> | 11 |
| <i>Previews</i> | 23 |
| <i>Color Blindness Simulation</i> | 26 |
| <i>CSS Examples</i> | 29 |

Color

Hex(EDBEB0)

Conversions

Conversions Part 1

| Format | Color |
|-------------|---------------------------|
| Hex | EDBEB0 |
| RGB | 237, 190, 176 |
| RGB Percent | 93%, 75%, 69% |
| CMY | 0.0706, 0.2549, 0.3098 |
| CMYK | 0.00, 0.20, 0.26, 0.07 |
| HSL | 14°, 63%, 81% |
| HSV | 14°, 26%, 93% |
| XYZ | 61.1750, 57.9660, 49.0386 |
| YIQ | 202.4570, 32.5060, 5.6100 |

Conversions

Conversions Part 2

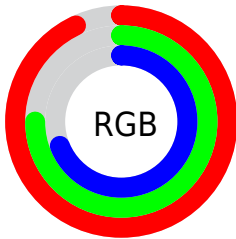
| Format | Color |
|-------------------------------------|--------------------------------|
| R _Y B | 237, 194, 176 |
| Decimal | 15580848 |
| CIE Lab | 80.72, 14.80, 13.45 |
| CIE LCh | 81, 20.004, 42.265 |
| Yxy | 57.9660, 0.3637, 0.3447 |
| Android (android.graphics.Color) | 4293770928 (0xFFEDBEB0) |
| YUV | 202.4570, -13.0433, 30.2942 |
| Hunter-Lab | 76.1354, 10.1882, 15.1063 |

Details

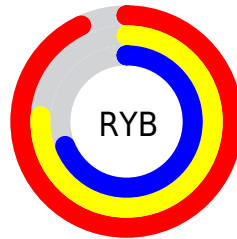
The Hex color **EDBEB0** is a light color, and the websafe version is hex **FFCCCC**. A complement of this color would be **B0DFED**, and the grayscale version is **CBCBCB**.

A 20% lighter version of the original color is **FFF6E8**, and **B4897B** is the 20% darker color. If you saturate the color by 10%, you get **EDAC98**, and if you desaturate by 10%, it is **EDD0C8**.

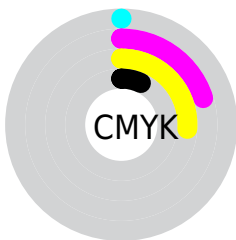
Distribution



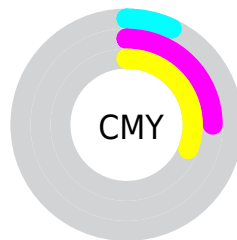
- Red (93%)
- Green (75%)
- Blue (69%)



- Red (93%)
- Yellow (76%)
- Blue (69%)



- Cyan (0%)
- Magenta (20%)
- Yellow (26%)
- Black (7%)



- Cyan (7%)
- Magenta (25%)
- Yellow (31%)

Brightness & Saturation Gradients

These gradients show how the Hex color EDBEB0 changes by changing the brightness by 10 percent. The first figure shows a shift by +10% for each color and the second figure -10%.

Similar to the brightness gradients but the following saturation gradients show a change of the Hex color EDBEB0 by changing the saturation by 10% instead.

 EDBEB0

 EDBEB0

FFFFFF

 D0A395

 FFF6E8

 B4897B

 996F63

 7E574B

 643F34

 4B291F

 331407

 1E0000

 000000

 EDBEB0

 EDBEB0

 EDAC98

 EDD0C8

 ED9981

 EDE3DF

 ED8769

 EDF5F7

 ED7551

 EDFFFF

 ED633A

 ED5022

 ED3E0A

 ED3600

Harmonies

Analogous

The Analogous color harmony consists of three colors that are next to each other on the color wheel.



EFBBC1



EDBEB0



E1C3A5

Triad

The Triadic color harmony groups three colors that are evenly spaced from another and form a triangle on the color wheel.



EDBEB0



A6D2BC



BDC7ED

Complementary

The Complementary color scheme is a pair of colors which are on the opposite of each other on the color wheel.



EDBEB0



B0DFED

Split Complementary

Split-complementary colors differ from the complementary color scheme. The scheme consists of three colors, the original color and two neighbors of the complement color.



A6CDEB



EDBEB0



98D3D0

Square

The Square scheme is like the rectangle color scheme, but the four colors are evenly spaced on the color wheel.



EDBEB0



BACFAC



98D2E1



D5C1E4

Rectangle

The Rectangle color scheme consists of four colors that form a rectangle on the color wheel.



EDBEB0



D6C8A3



98D2E1



B5C9ED

Sweetspot

The Sweet Spot groups the original color and five complimentary colors.



EDBE0



FFEFE0



E0E0E0



808080



000000



808080

Same Dimension

The Same Dimension uses a secret algorithm to generate beautiful new colors.



EDBEB0



FFC2B0



EDDCB0



756C6A



B52A00



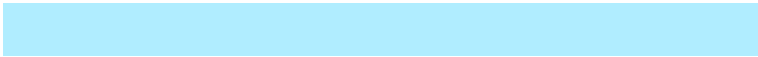
360C00

Inverse Universe

The Inverse Universe completely reimagines the original color for something new.



B0DFED



B0EDFF



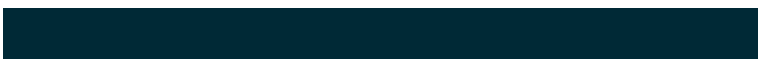
B0C1ED



6A7375



008BB5



002936

Previews

White Background



This preview shows how the Hex color EDBEB0 looks on a white background.

Color Contrast Check

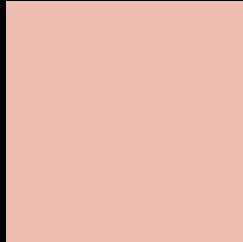
Large Text (above 18pt) WCAG AA × Fail

Any Text WCAG AA × Fail

Large Text (above 18pt) WCAG AAA × Fail

Any Text WCAG AAA × Fail

Black Background



This preview shows how the Hex color EDBEB0 looks on a black background.

Color Contrast Check

Large Text (above 18pt) WCAG AA ✓ Pass

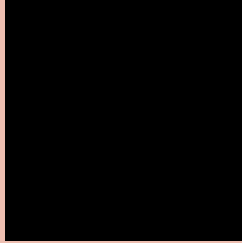
Any Text WCAG AA ✓ Pass

Large Text (above 18pt) WCAG AAA ✓ Pass

Any Text WCAG AAA ✓ Pass

If you want to check with other color combinations, try the [Color Contrast Checker](#).

Hex EDBEB0 Background



This preview shows how black text looks on a background with the Hex color EDBEB0.

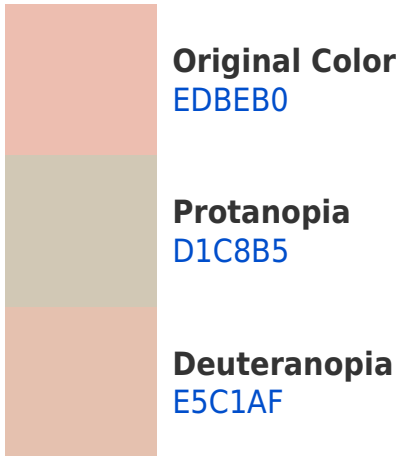


This preview shows how white text looks on a background with the Hex color EDBEB0.

Color Blindness Simulation

Color vision deficiency is a very complex topic, and I could not describe the different causes any better than Wikipedia does, so if you want to learn more, you should check out their [article about color blindness](#).

Dichromacy



Trichromacy



Original Color
EDBEB0

Protanomaly
DBC4B3

Deuteranomaly
E8C0AF

Tritanomaly
EFBBC0

Monochromacy



Original Color
EDBEB0

Achromatopsia
CACACA

Achromatomaly
D7C6C1

CSS Examples

Text

The CSS property to change the color of the text to Hex EDBEB0 is called "color". The color property can be set on classes, ids or directly on the HTML element.

This example shows how text in the color #EDBEB0 looks like.

```
.text, #text, p{  
    color:#EDBEB0  
}
```

If you want to add a text shadow in that color use the text-shadow property, you can generate a text shadow directly with our [CSS Text Shadow Generator](#).

Here you see how black text with a 4 pixel #EDBEB0 colored shadow looks like.

```
.shadow{ text-shadow: 4px 4px 2px #EDBEB0  
}
```

Border

The CSS property to change the border of an element to Hex EDBEB0 is called "border". The border property can be set on classes, ids or directly on the HTML element.

This example shows the color as border, it can be applied via the CSS property "border" or "border-color".

```
.border, #border, table{ border:4px solid  
#EDBEB0 }
```

If only the border color should be changed use the property `border-color`.

```
.border{ border-color:#EDBEB0 }
```

If you want to add a box shadow in that color use:

Here you see how a box with a 4 pixel #EDBEB0 colored shadow looks like.

```
.boxshadow{ -moz-box-shadow:4px 4px 4px  
4px #EDBEB0; -webkit-box-shadow:4px 4px  
4px 4px #EDBEB0; box-shadow:4px 4px 4px  
4px #EDBEB0 }
```

Background

The CSS property to change the background color of an element to Hex EDBEB0 is called "background". The background property can be set on classes, ids or directly on the HTML element.

```
.background, #background, body{  
background:#EDBEB0 }
```

If only the background color should be changed can be used:

```
.background{ background-color:#EDBEB0 }
```

This example shows the color as background, it is applied via the CSS property "background".

To optimize and compress your CSS code, you can use our [online CSS compressor and optimizer](#) based on csstidy. If you want to create a linear or radial gradient as background or border, check our [CSS Gradient Generator](#).

Hey! You found this booklet interesting? Support Converting Colors with the new Membership Option!

The pro membership hides all ads, plus gives you double the colors in the color bucket, and more awesome pro features!

[Learn more, Memberships starting at \\$2.50/m!](#)

**Follow me
on Twitter!**

@ConvertingColor