

Converting Colors

Hex(EDBEEA)

Have a look what the booklet for
Hex(EDBEEA) contains.

Hex(EDBEEA)	3
<i>Conversions</i>	4
<i>Details</i>	6
<i>Harmonies</i>	11
<i>Previews</i>	23
<i>Color Blindness Simulation</i>	26
<i>CSS Examples</i>	29

Color

Hex(EDBEEA)

Conversions

Conversions Part 1

Format	Color
Hex	EDBEEA
RGB	237, 190, 234
RGB Percent	93%, 75%, 92%
CMY	0.0706, 0.2549, 0.0824
CMYK	0.00, 0.20, 0.01, 0.07
HSL	304°, 57%, 84%
HSV	304°, 20%, 93%
XYZ	68.1898, 60.7719, 85.9781
YIQ	209.0690, 13.8880, 23.6480

Conversions

Conversions Part 2

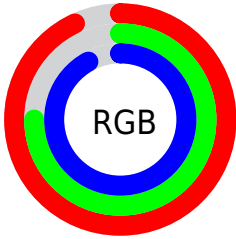
Format	Color
R _Y B	237, 190, 234
Decimal	15580906
CIE Lab	82.26, 24.09, -15.45
CIE LCh	82, 28.619, 327.323
Yxy	60.7719, 0.3173, 0.2827
Android (android.graphics.Color)	4293770986 (0xFFEDBEEA)
YUV	209.0690, 12.2910, 24.4955
Hunter-Lab	77.9564, 19.7134, -10.8215

Details

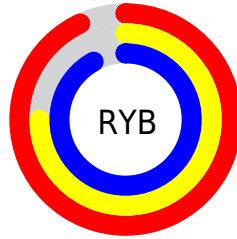
The Hex color **EDBEEA** is a light color, and the websafe version is hex **FFCCFF**. A complement of this color would be **BEEDC1**, and the grayscale version is **D1D1D1**.

A 20% lighter version of the original color is **FFF7FF**, and **B588B2** is the 20% darker color. If you saturate the color by 10%, you get **EDA6E8**, and if you desaturate by 10%, it is **EDD6EC**.

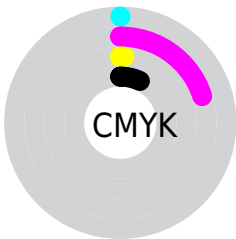
Distribution



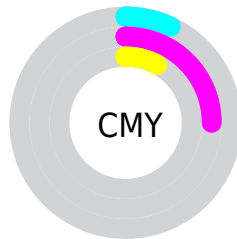
- Red (93%)
- Green (75%)
- Blue (92%)



- Red (93%)
- Yellow (75%)
- Blue (92%)



- Cyan (0%)
- Magenta (20%)
- Yellow (1%)
- Black (7%)



- Cyan (7%)
- Magenta (25%)
- Yellow (8%)

Brightness & Saturation Gradients

These gradients show how the Hex color EDBEEA changes by changing the brightness by 10 percent. The first figure shows a shift by +10% for each color and the second figure -10%.

Similar to the brightness gradients but the following saturation gradients show a change of the Hex color EDBEEA by changing the saturation by 10% instead.

 EDBEEA

FFFFFF

 FFF7FF

 EDBEEA

 D1A3CE

 B588B2

 9A6F97

 7F567E

 663E64

 4D274C

 361136

 220020

 000005

 EDBEEA

 EDBEEA

 EDA6E8

 EDD6EC

 ED8FE7

 EDEDED

 ED77E5

 EDFFEF

 ED5FE4

 EDFFF0

 ED47E2

 EDFFF2

 ED30E1

 EDFFF3

 ED18DF

 EDFFF5

 ED00DE

 EDFFF6

 EDFFF8

Harmonies

Analogous

The Analogous color harmony consists of three colors that are next to each other on the color wheel.



CEC7FC



EDBEEA



FFB9D0

Triad

The Triadic color harmony groups three colors that are evenly spaced from another and form a triangle on the color wheel.



EDBEEA



E3CA97



7EDBE4

Complementary

The Complementary color scheme is a pair of colors which are on the opposite of each other on the color wheel.



EDBEEA



BEEDC1

Split Complementary

Split-complementary colors differ from the complementary color scheme. The scheme consists of three colors, the original color and two neighbors of the complement color.



8CDCC9



EDBEEA



C6D29C

Square

The Square scheme is like the rectangle color scheme, but the four colors are evenly spaced on the color wheel.



EDBEEA



F8C1A0



A7D9AF



89D7F9

Rectangle

The Rectangle color scheme consists of four colors that form a rectangle on the color wheel.



EDBEEA



FFBABE



A7D9AF



80DCDC

Sweetspot

The Sweet Spot groups the original color and five complimentary colors.



EDBEEA



FFF0FE



COBEED



80777F



000000



808080

Same Dimension

The Same Dimension uses a secret algorithm to generate beautiful new colors.



EDBEEA



FFC2FB



EDBED3



756A75



B500A9



360032

Inverse Universe

The Inverse Universe completely reimagines the original color for something new.



EDBEEA



FFC2FB



BEEDD8



756A75



B500A9



360032

Previews

White Background



This preview shows how the Hex color `EDBEEA` looks on a white background.

Color Contrast Check

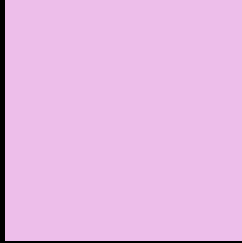
Large Text (above 18pt) WCAG AA × Fail

Any Text WCAG AA × Fail

Large Text (above 18pt) WCAG AAA × Fail

Any Text WCAG AAA × Fail

Black Background



This preview shows how the Hex color EDBEEA looks on a black background.

Color Contrast Check

Large Text (above 18pt) WCAG AA ✓ Pass

Any Text WCAG AA ✓ Pass

Large Text (above 18pt) WCAG AAA ✓ Pass

Any Text WCAG AAA ✓ Pass

If you want to check with other color combinations, try the [Color Contrast Checker](#).

Hex EDBEEA Background



This preview shows how black text looks on a background with the Hex color EDBEEA.

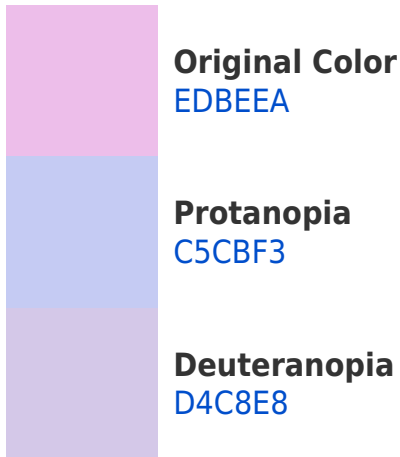


This preview shows how white text looks on a background with the Hex color EDBEEA.

Color Blindness Simulation

Color vision deficiency is a very complex topic, and I could not describe the different causes any better than Wikipedia does, so if you want to learn more, you should check out their [article about color blindness](#).

Dichromacy





Tritanopia
EAC2D1

Trichromacy



Original Color
EDBEEA



Protanomaly
D4C6F0



Deuteranomaly
DDC4E9

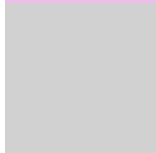


Tritanomaly
EBC1DA

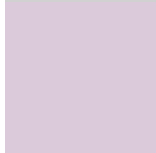
Monochromacy



Original Color
EDBEEA



Achromatopsia
D1D1D1



Achromatomaly
DBCADA

CSS Examples

Text

The CSS property to change the color of the text to Hex EDBEEA is called "color". The color property can be set on classes, ids or directly on the HTML element.

This example shows how text in the color #EDBEEA looks like.

```
.text, #text, p{  
    color:#EDBEEA  
}
```

If you want to add a text shadow in that color use the text-shadow property, you can generate a text shadow directly with our [CSS Text Shadow Generator](#).

Here you see how black text with a 4 pixel #EDBEEA colored shadow looks like.

```
.shadow{ text-shadow: 4px 4px 2px #EDBEEA
}
```

Border

The CSS property to change the border of an element to Hex EDBEEA is called "border". The border property can be set on classes, ids or directly on the HTML element.

This example shows the color as border, it can be applied via the CSS property "border" or "border-color".

```
.border, #border, table{ border:4px solid
#EDBEEA }
```

If only the border color should be changed use the property `border-color`.

```
.border{ border-color:#EDBEEA }
```

If you want to add a box shadow in that color use:

Here you see how a box with a 4 pixel #EDBEEA colored shadow looks like.

```
.boxshadow{ -moz-box-shadow:4px 4px 4px  
4px #EDBEEA; -webkit-box-shadow:4px 4px  
4px 4px #EDBEEA; box-shadow:4px 4px 4px  
4px #EDBEEA }
```

Background

The CSS property to change the background color of an element to Hex EDBEEA is called "background". The background property can be set on classes, ids or directly on the HTML element.

```
.background, #background, body{  
background:#EDBEEA }
```

If only the background color should be changed can be used:

```
.background{ background-color:#EDBEEA }
```

This example shows the color as background, it is applied via the CSS property "background".

To optimize and compress your CSS code, you can use our [online CSS compressor and optimizer](#) based on csstidy. If you want to create a linear or radial gradient as background or border, check our [CSS Gradient Generator](#).

Hey! You found this booklet interesting? Support Converting Colors with the new Membership Option!

The pro membership hides all ads, plus gives you double the colors in the color bucket, and more awesome pro features!

[Learn more, Memberships starting at \\$2.50/m!](#)

**Follow me
on Twitter!**

@ConvertingColor