

Converting Colors

Hex(EDC1F0)

Have a look what the booklet for
Hex(EDC1F0) contains.

| | |
|--|----|
| Hex(EDC1F0) | 3 |
| <i>Conversions</i> | 4 |
| <i>Details</i> | 6 |
| <i>Harmonies</i> | 11 |
| <i>Previews</i> | 23 |
| <i>Color Blindness Simulation</i> | 26 |
| <i>CSS Examples</i> | 29 |

Color

Hex(EDC1F0)

Conversions

Conversions Part 1

| Format | Color |
|---------------|----------------------------|
| Hex | EDC1F0 |
| RGB | 237, 193, 240 |
| RGB Percent | 93%, 76%, 94% |
| CMY | 0.0706, 0.2431, 0.0588 |
| CMYK | 0.01, 0.20, 0.00, 0.06 |
| HSL | 296°, 61%, 85% |
| HSV | 296°, 20%, 94% |
| XYZ | 69.7232, 62.4357, 90.8146 |
| YIQ | 211.5140, 11.1370, 23.9450 |

Conversions

Conversions Part 2

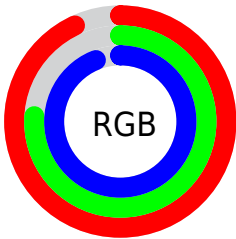
| Format | Color |
|-------------------------------------|-------------------------------|
| R _Y B | 237, 193, 240 |
| Decimal | 15581680 |
| CIE Lab | 83.14, 23.59, -17.32 |
| CIE LCh | 83, 29.267, 323.709 |
| Yxy | 62.4357, 0.3127, 0.2800 |
| Android (android.graphics.Color) | 4293771760 (0xFFEDC1F0) |
| YUV | 211.5140, 14.0436, 22.3512 |
| Hunter-Lab | 79.0163, 19.2282, -12.8315 |

Details

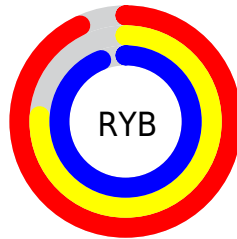
The Hex color **EDC1F0** is a light color, and the websafe version is hex **FFCCFF**. A complement of this color would be **C4F0C1**, and the grayscale version is **D3D3D3**.

A 20% lighter version of the original color is **FFFAFF**, and **B58BB8** is the 20% darker color. If you saturate the color by 10%, you get **EBA9F0**, and if you desaturate by 10%, it is **EFD9F0**.

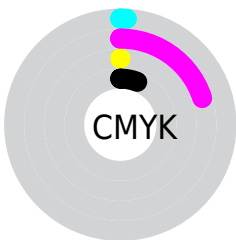
Distribution



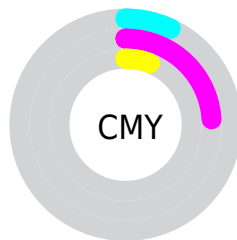
- Red (93%)
- Green (76%)
- Blue (94%)



- Red (93%)
- Yellow (76%)
- Blue (94%)



- Cyan (1%)
- Magenta (20%)
- Yellow (0%)
- Black (6%)



- Cyan (7%)
- Magenta (24%)
- Yellow (6%)

Brightness & Saturation Gradients

These gradients show how the Hex color EDC1F0 changes by changing the brightness by 10 percent. The first figure shows a shift by +10% for each color and the second figure -10%.

Similar to the brightness gradients but the following saturation gradients show a change of the Hex color EDC1F0 by changing the saturation by 10% instead.

 EDC1F0

FFFFFF

 FFFAFF

 EDC1F0

 D1A6D4

 B58BB8

 9A719D

 7F5983

 66416A

 4D2A51

 36143A

 210025

 00010D

 EDC1F0

 EDC1F0

 EBA9F0

 EFD9F0

 EA91F0

 F0F1F0

 E879F0

 F2FFF0

 E761F0

 F3FFF0

 E549F0

 F5FFF0

 E431F0

 F6FFF0

 E219F0

 F8FFF0

 E101F0

 F9FFF0

 E100F0

 FBFFF0

Harmonies

Analogous

The Analogous color harmony consists of three colors that are next to each other on the color wheel.



CCCAFF



EDC1F0



FFBCD6

Triad

The Triadic color harmony groups three colors that are evenly spaced from another and form a triangle on the color wheel.



EDC1F0



E9CB99



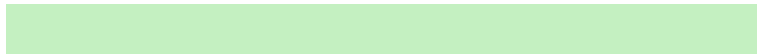
7EDEE4

Complementary

The Complementary color scheme is a pair of colors which are on the opposite of each other on the color wheel.



EDC1F0



C4F0C1

Split Complementary

Split-complementary colors differ from the complementary color scheme. The scheme consists of three colors, the original color and two neighbors of the complement color.



8FDEC8



EDC1F0



CCD49C

Square

The Square scheme is like the rectangle color scheme, but the four colors are evenly spaced on the color wheel.



EDC1F0



FEC2A4



ADDBAE



86DBFB

Rectangle

The Rectangle color scheme consists of four colors that form a rectangle on the color wheel.



EDC1F0



FFBBC3



ADDBAE



82DFDB

Sweetspot

The Sweet Spot groups the original color and five complimentary colors.



EDC1F0



FEF0FF



C1C4F0



7F7780



000000



808080

Same Dimension

The Same Dimension uses a secret algorithm to generate beautiful new colors.



EDC1F0



FBC2FF



F0C1DC



776C78



AC00B8



350038

Inverse Universe

The Inverse Universe completely reimagines the original color for something new.



F0C1C4



FFC2C6



C1F0D5



786C6D



B8000C



380004

Previews

White Background



This preview shows how the Hex color EDC1F0 looks on a white background.

Color Contrast Check

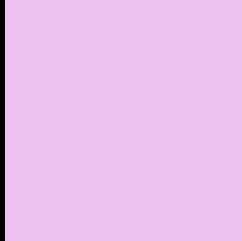
Large Text (above 18pt) WCAG AA × Fail

Any Text WCAG AA × Fail

Large Text (above 18pt) WCAG AAA × Fail

Any Text WCAG AAA × Fail

Black Background



This preview shows how the Hex color EDC1F0 looks on a black background.

Color Contrast Check

Large Text (above 18pt) WCAG AA ✓ Pass

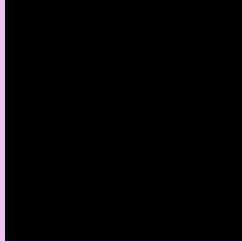
Any Text WCAG AA ✓ Pass

Large Text (above 18pt) WCAG AAA ✓ Pass

Any Text WCAG AAA ✓ Pass

If you want to check with other color combinations, try the [Color Contrast Checker](#).

Hex EDC1F0 Background



This preview shows how black text looks on a background with the Hex color EDC1F0.

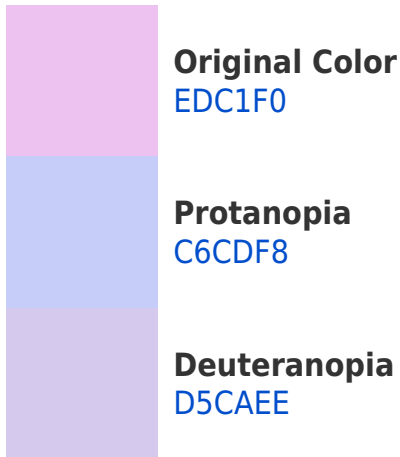


This preview shows how white text looks on a background with the Hex color EDC1F0.

Color Blindness Simulation

Color vision deficiency is a very complex topic, and I could not describe the different causes any better than Wikipedia does, so if you want to learn more, you should check out their [article about color blindness](#).

Dichromacy





Tritanopia
E9C6D5

Trichromacy



Original Color
EDC1F0



Protanomaly
D4C9F5



Deuteranomaly
DEC7EF

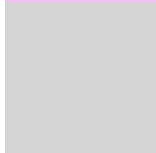


Tritanomaly
EAC4DF

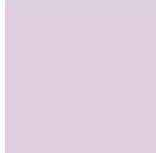
Monochromacy



Original Color
EDC1F0



Achromatopsia
D4D4D4



Achromatomaly
DDCDDE

CSS Examples

Text

The CSS property to change the color of the text to Hex EDC1F0 is called "color". The color property can be set on classes, ids or directly on the HTML element.

This example shows how text in the color #EDC1F0 looks like.

```
.text, #text, p{  
    color:#EDC1F0  
}
```

If you want to add a text shadow in that color use the text-shadow property, you can generate a text shadow directly with our [CSS Text Shadow Generator](#).

Here you see how black text with a 4 pixel #EDC1F0 colored shadow looks like.

```
.shadow{ text-shadow: 4px 4px 2px #EDC1F0
}
```

Border

The CSS property to change the border of an element to Hex EDC1F0 is called "border". The border property can be set on classes, ids or directly on the HTML element.

This example shows the color as border, it can be applied via the CSS property "border" or "border-color".

```
.border, #border, table{ border:4px solid
#EDC1F0 }
```

If only the border color should be changed use the property `border-color`.

```
.border{ border-color:#EDC1F0 }
```

If you want to add a box shadow in that color use:

Here you see how a box with a 4 pixel #EDC1F0 colored shadow looks like.

```
.boxshadow{ -moz-box-shadow:4px 4px 4px  
4px #EDC1F0; -webkit-box-shadow:4px 4px  
4px 4px #EDC1F0; box-shadow:4px 4px 4px  
4px #EDC1F0 }
```

Background

The CSS property to change the background color of an element to Hex EDC1F0 is called "background". The background property can be set on classes, ids or directly on the HTML element.

```
.background, #background, body{  
background:#EDC1F0 }
```

If only the background color should be changed can be used:

```
.background{ background-color:#EDC1F0 }
```

This example shows the color as background, it is applied via the CSS property "background".

To optimize and compress your CSS code, you can use our [online CSS compressor and optimizer](#) based on csstidy. If you want to create a linear or radial gradient as background or border, check our [CSS Gradient Generator](#).

Hey! You found this booklet interesting? Support Converting Colors with the new Membership Option!

The pro membership hides all ads, plus gives you double the colors in the color bucket, and more awesome pro features!

[Learn more, Memberships starting at \\$2.50/m!](#)

**Follow me
on Twitter!**

@ConvertingColor