

Converting Colors

Hex(EDC4D8)

Have a look what the booklet for
Hex(EDC4D8) contains.

Hex(EDC4D8)	3
<i>Conversions</i>	4
<i>Details</i>	6
<i>Harmonies</i>	11
<i>Previews</i>	23
<i>Color Blindness Simulation</i>	26
<i>CSS Examples</i>	29

Color

Hex(EDC4D8)

Conversions

Conversions Part 1

Format	Color
Hex	EDC4D8
RGB	237, 196, 216
RGB Percent	93%, 77%, 85%
CMY	0.0706, 0.2314, 0.1529
CMYK	0.00, 0.17, 0.09, 0.07
HSL	331°, 53%, 85%
HSV	331°, 17%, 93%
XYZ	67.0596, 62.4422, 73.4839
YIQ	210.5390, 18.0160, 14.9120

Conversions

Conversions Part 2

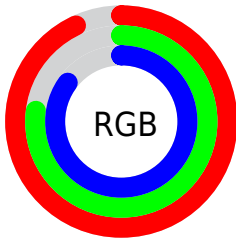
Format	Color
R_{YB}	237, 196, 216
Decimal	15582424
CIE Lab	83.15, 17.76, -4.49
CIE LCh	83, 18.316, 345.821
Yxy	62.4422, 0.3304, 0.3076
Android (android.graphics.Color)	4293772504 (0xFFEDC4D8)
YUV	210.5390, 2.6923, 23.2063
Hunter-Lab	79.0204, 13.1960, 0.1784

Details

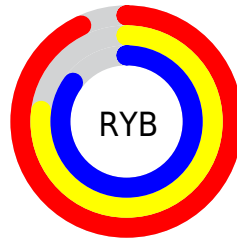
The Hex color **EDC4D8** is a light color, and the websafe version is hex **FFCCCC**. A complement of this color would be **C4EDD9**, and the grayscale version is **D3D3D3**.

A 20% lighter version of the original color is **FFFDFD**, and **B58EA1** is the 20% darker color. If you saturate the color by 10%, you get **EDACCC**, and if you desaturate by 10%, it is **EDDCE4**.

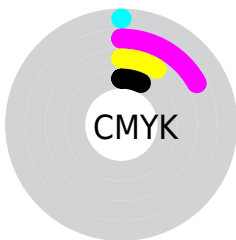
Distribution



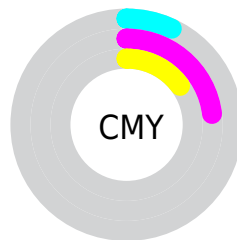
- Red (93%)
- Green (77%)
- Blue (85%)



- Red (93%)
- Yellow (77%)
- Blue (85%)



- Cyan (0%)
- Magenta (17%)
- Yellow (9%)
- Black (7%)



- Cyan (7%)
- Magenta (23%)
- Yellow (15%)

Brightness & Saturation Gradients

These gradients show how the Hex color EDC4D8 changes by changing the brightness by 10 percent. The first figure shows a shift by +10% for each color and the second figure -10%.

Similar to the brightness gradients but the following saturation gradients show a change of the Hex color EDC4D8 by changing the saturation by 10% instead.

 EDC4D8

 EDC4D8

FFFFFF

 D1A9BC

 FFFDFD

 B58EA1

 9A7487

 805C6E

 664455

 4E2D3E

 361828

 220014

 000000

 EDC4D8

 EDC4D8

 EDACCC

 EDDCE4

 ED95C0

 EDF3F0

 ED7DB4

 EDFFFC

 ED65A7

 EDFFFF

 ED4E9B

 ED368F

 ED1E83

 ED0677

 ED0074

Harmonies

Analogous

The Analogous color harmony consists of three colors that are next to each other on the color wheel.



DDC8E7



EDC4D8



F4C3C6

Triad

The Triadic color harmony groups three colors that are evenly spaced from another and form a triangle on the color wheel.



EDC4D8



D3D1AE



A4D7E7

Complementary

The Complementary color scheme is a pair of colors which are on the opposite of each other on the color wheel.



EDC4D8



C4EDD9

Split Complementary

Split-complementary colors differ from the complementary color scheme. The scheme consists of three colors, the original color and two neighbors of the complement color.



A3D9D8



EDC4D8



BFD6B7

Square

The Square scheme is like the rectangle color scheme, but the four colors are evenly spaced on the color wheel.



EDC4D8



E5CBAE



ADD9C6



B2D3F0

Rectangle

The Rectangle color scheme consists of four colors that form a rectangle on the color wheel.



EDC4D8



F2C5BC



ADD9C6



A2D8E3

Sweetspot

The Sweet Spot groups the original color and five complimentary colors.



EDC4D8



FFF2F8



D9C4ED



80787C



000000



808080

Same Dimension

The Same Dimension uses a secret algorithm to generate beautiful new colors.



EDC4D8



FFC9E4



EDC4C4



756A6F



B50058



36001A

Inverse Universe

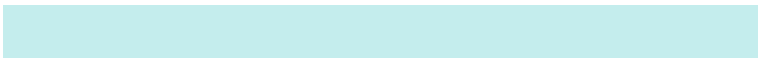
The Inverse Universe completely reimagines the original color for something new.



EDC4D8



FFC9E4



C4EDED



756A6F



B50058



36001A

Previews

White Background



This preview shows how the Hex color EDC4D8 looks on a white background.

Color Contrast Check

Large Text (above 18pt) WCAG AA × Fail

Any Text WCAG AA × Fail

Large Text (above 18pt) WCAG AAA × Fail

Any Text WCAG AAA × Fail

Black Background



This preview shows how the Hex color EDC4D8 looks on a black background.

Color Contrast Check

Large Text (above 18pt) WCAG AA ✓ Pass

Any Text WCAG AA ✓ Pass

Large Text (above 18pt) WCAG AAA ✓ Pass

Any Text WCAG AAA ✓ Pass

If you want to check with other color combinations, try the [Color Contrast Checker](#).

Hex EDC4D8 Background



This preview shows how black text looks on a background with the Hex color EDC4D8.

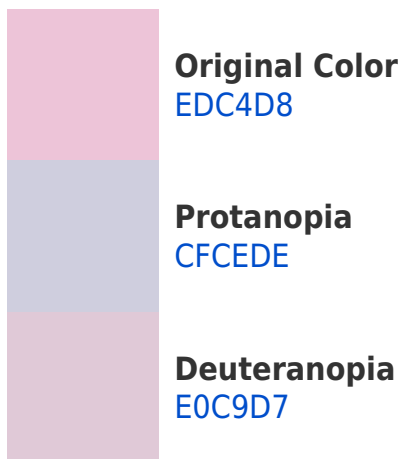


This preview shows how white text looks on a background with the Hex color EDC4D8.

Color Blindness Simulation

Color vision deficiency is a very complex topic, and I could not describe the different causes any better than Wikipedia does, so if you want to learn more, you should check out their [article about color blindness](#).

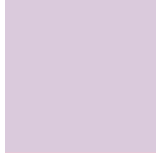
Dichromacy



Trichromacy



Original Color
EDC4D8



Protanomaly
DACADC



Deuteranomaly
E5C7D7

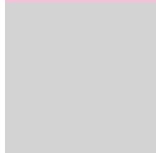


Tritanomaly
ECC5D5

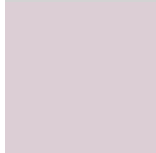
Monochromacy



Original Color
EDC4D8



Achromatopsia
D3D3D3



Achromatomaly
DCCED5

CSS Examples

Text

The CSS property to change the color of the text to Hex EDC4D8 is called "color". The color property can be set on classes, ids or directly on the HTML element.

This example shows how text in the color #EDC4D8 looks like.

```
.text, #text, p{  
    color:#EDC4D8  
}
```

If you want to add a text shadow in that color use the text-shadow property, you can generate a text shadow directly with our [CSS Text Shadow Generator](#).

Here you see how black text with a 4 pixel #EDC4D8 colored shadow looks like.

```
.shadow{ text-shadow: 4px 4px 2px #EDC4D8 }  
}
```

Border

The CSS property to change the border of an element to Hex EDC4D8 is called "border". The border property can be set on classes, ids or directly on the HTML element.

This example shows the color as border, it can be applied via the CSS property "border" or "border-color".

```
.border, #border, table{ border:4px solid #EDC4D8 }  
}
```

If only the border color should be changed use the property `border-color`.

```
.border{ border-color:#EDC4D8 }
```

If you want to add a box shadow in that color use:

Here you see how a box with a 4 pixel #EDC4D8 colored shadow looks like.

```
.boxshadow{ -moz-box-shadow:4px 4px 4px  
4px #EDC4D8; -webkit-box-shadow:4px 4px  
4px 4px #EDC4D8; box-shadow:4px 4px 4px  
4px #EDC4D8 }
```

Background

The CSS property to change the background color of an element to Hex EDC4D8 is called "background". The background property can be set on classes, ids or directly on the HTML element.

```
.background, #background, body{  
background:#EDC4D8 }
```

If only the background color should be changed can be used:

```
.background{ background-color:#EDC4D8 }
```

This example shows the color as background, it is applied via the CSS property "background".

To optimize and compress your CSS code, you can use our [online CSS compressor and optimizer](#) based on csstidy. If you want to create a linear or radial gradient as background or border, check our [CSS Gradient Generator](#).

Hey! You found this booklet interesting? Support Converting Colors with the new Membership Option!

The pro membership hides all ads, plus gives you double the colors in the color bucket, and more awesome pro features!

[Learn more, Memberships starting at \\$2.50/m!](#)

**Follow me
on Twitter!**

@ConvertingColor