

Converting Colors

Hex(EDD5D1)

Have a look what the booklet for
Hex(EDD5D1) contains.

Hex(EDD5D1)	3
<i>Conversions</i>	4
<i>Details</i>	6
<i>Harmonies</i>	11
<i>Previews</i>	23
<i>Color Blindness Simulation</i>	26
<i>CSS Examples</i>	29

Color

Hex(EDD5D1)

Conversions

Conversions Part 1

Format	Color
Hex	EDD5D1
RGB	237, 213, 209
RGB Percent	93%, 84%, 82%
CMY	0.0706, 0.1647, 0.1804
CMYK	0.00, 0.10, 0.12, 0.07
HSL	9°, 44%, 87%
HSV	9°, 12%, 93%
XYZ	70.2279, 70.1965, 70.1695
YIQ	219.7200, 15.5880, 3.8440

Conversions

Conversions Part 2

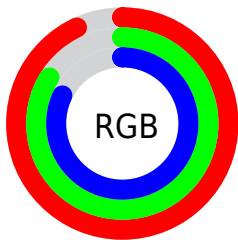
Format	Color
R _Y B	237, 214, 209
Decimal	15586769
CIE Lab	87.09, 7.66, 4.99
CIE LCh	87, 9.141, 33.114
Yxy	70.1965, 0.3335, 0.3333
Android (android.graphics.Color)	4293776849 (0xFFEDD5D1)
YUV	219.7200, -5.2850, 15.1546
Hunter-Lab	83.7833, 2.9994, 8.9923

Details

The Hex color **EDD5D1** is a light color, and the websafe version is hex **CCCCCC**. A complement of this color would be **D1E9ED**, and the grayscale version is **DCDCDC**.

A 20% lighter version of the original color is **FFFFFF**, and **B59E9B** is the 20% darker color. If you saturate the color by 10%, you get **EDC1B9**, and if you desaturate by 10%, it is **EDE9E9**.

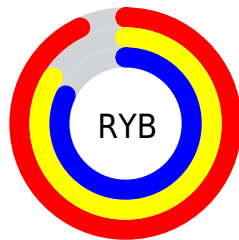
Distribution



Red (93%)

Green (84%)

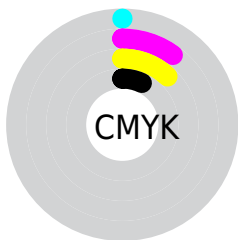
Blue (82%)



Red (93%)

Yellow (84%)

Blue (82%)

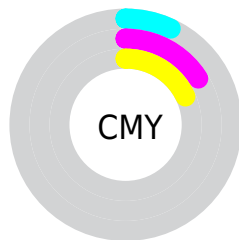


Cyan (0%)

Magenta (10%)

Yellow (12%)

Black (7%)



Cyan (7%)

Magenta (16%)

Yellow (18%)

Brightness & Saturation Gradients

These gradients show how the Hex color EDD5D1 changes by changing the brightness by 10 percent. The first figure shows a shift by +10% for each color and the second figure -10%.

Similar to the brightness gradients but the following saturation gradients show a change of the Hex color EDD5D1 by changing the saturation by 10% instead.

 EDD5D1

FFFFFF

 EDD5D1

 D1B9B5

 B59E9B

 9A8481

 806B68

 675350

 4E3C39

 372623

 22120E

 000000

 EDD5D1

 EDD5D1

 EDC1B9

 EDE9E9

 EDACA2

 EDFEFF

 ED988A

 EDFFFF

 ED8472

 ED6F5A

 ED5B43

 ED472B

 ED3213

 ED2200

Harmonies

Analogous

The Analogous color harmony consists of three colors that are next to each other on the color wheel.



ECD4D9



EDD5D1



E9D7CB

Triad

The Triadic color harmony groups three colors that are evenly spaced from another and form a triangle on the color wheel.



EDD5D1



CDDFD2



D2DBEB

Complementary

The Complementary color scheme is a pair of colors which are on the opposite of each other on the color wheel.



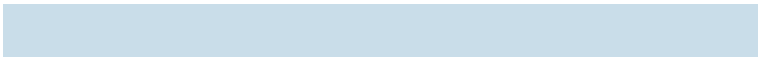
EDD5D1



D1E9ED

Split Complementary

Split-complementary colors differ from the complementary color scheme. The scheme consists of three colors, the original color and two neighbors of the complement color.



C9DDE9



EDD5D1



C7DFDB

Square

The Square scheme is like the rectangle color scheme, but the four colors are evenly spaced on the color wheel.



EDD5D1



D7DDCC



C5DFE3



DDD8E9

Rectangle

The Rectangle color scheme consists of four colors that form a rectangle on the color wheel.



EDD5D1



E4D9C9



C5DFE3



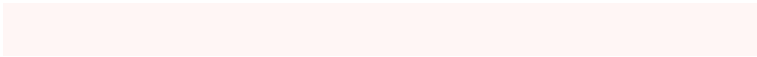
CFDBEB

Sweetspot

The Sweet Spot groups the original color and five complimentary colors.



EDD5D1



FFF6F5



EDD1E9



807A79



000000



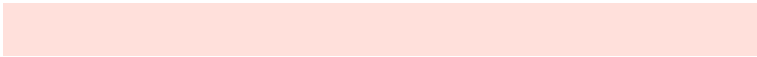
808080

Same Dimension

The Same Dimension uses a secret algorithm to generate beautiful new colors.



EDD5D1



FFE0DB



EDE3D1



756B6A



B51A00



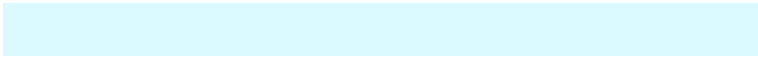
360800

Inverse Universe

The Inverse Universe completely reimagines the original color for something new.



D1E9ED



DBFAFF



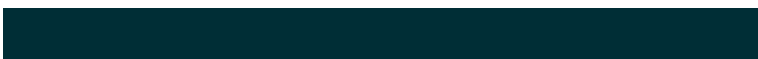
D1DBED



6A7475



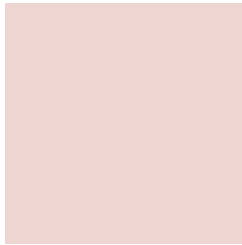
009BB5



002E36

Previews

White Background



This preview shows how the Hex color EDD5D1 looks on a white background.

Color Contrast Check

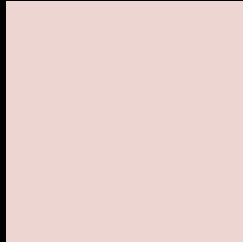
Large Text (above 18pt) WCAG AA × Fail

Any Text WCAG AA × Fail

Large Text (above 18pt) WCAG AAA × Fail

Any Text WCAG AAA × Fail

Black Background



This preview shows how the Hex color EDD5D1 looks on a black background.

Color Contrast Check

Large Text (above 18pt) WCAG AA ✓ Pass

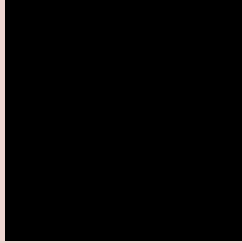
Any Text WCAG AA ✓ Pass

Large Text (above 18pt) WCAG AAA ✓ Pass

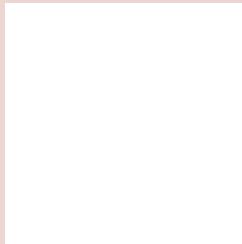
Any Text WCAG AAA ✓ Pass

If you want to check with other color combinations, try the [Color Contrast Checker](#).

Hex EDD5D1 Background



This preview shows how black text looks on a background with the Hex color EDD5D1.

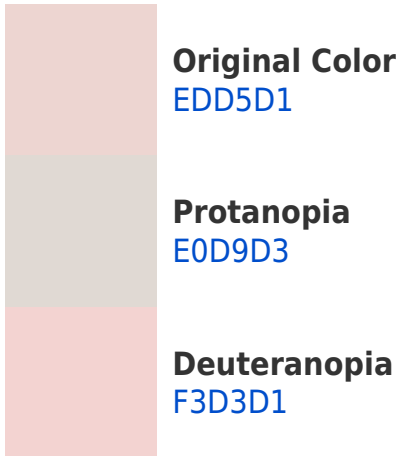


This preview shows how white text looks on a background with the Hex color EDD5D1.

Color Blindness Simulation

Color vision deficiency is a very complex topic, and I could not describe the different causes any better than Wikipedia does, so if you want to learn more, you should check out their [article about color blindness](#).

Dichromacy





Tritanopia
EFD2E3

Trichromacy



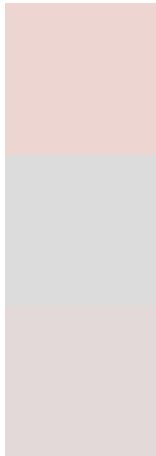
Original Color
EED5D1

Protanomaly
E5D8D2

Deuteranomaly
F1D4D1

Tritanomaly
EED3DC

Monochromacy



Original Color
EED5D1

Achromatopsia
DCDCDC

Achromatomaly
E2D9D8

CSS Examples

Text

The CSS property to change the color of the text to Hex EDD5D1 is called "color". The color property can be set on classes, ids or directly on the HTML element.

This example shows how text in the color #EDD5D1 looks like.

```
.text, #text, p{  
    color:#EDD5D1  
}
```

If you want to add a text shadow in that color use the text-shadow property, you can generate a text shadow directly with our [CSS Text Shadow Generator](#).

Here you see how black text with a 4 pixel #EDD5D1 colored shadow looks like.

```
.shadow{ text-shadow: 4px 4px 2px #EDD5D1
}
```

Border

The CSS property to change the border of an element to Hex EDD5D1 is called "border". The border property can be set on classes, ids or directly on the HTML element.

This example shows the color as border, it can be applied via the CSS property "border" or "border-color".

```
.border, #border, table{ border:4px solid
#EDD5D1 }
```

If only the border color should be changed use the property `border-color`.

```
.border{ border-color:#EDD5D1 }
```

If you want to add a box shadow in that color use:

Here you see how a box with a 4 pixel #EDD5D1 colored shadow looks like.

```
.boxshadow{ -moz-box-shadow:4px 4px 4px  
4px #EDD5D1; -webkit-box-shadow:4px 4px  
4px 4px #EDD5D1; box-shadow:4px 4px 4px  
4px #EDD5D1 }
```

Background

The CSS property to change the background color of an element to Hex EDD5D1 is called "background". The background property can be set on classes, ids or directly on the HTML element.

```
.background, #background, body{  
background:#EDD5D1 }
```

If only the background color should be changed can be used:

```
.background{ background-color:#EDD5D1 }
```

This example shows the color as background, it is applied via the CSS property "background".

To optimize and compress your CSS code, you can use our [online CSS compressor and optimizer](#) based on csstidy. If you want to create a linear or radial gradient as background or border, check our [CSS Gradient Generator](#).

Hey! You found this booklet interesting? Support Converting Colors with the new Membership Option!

The pro membership hides all ads, plus gives you double the colors in the color bucket, and more awesome pro features!

[Learn more, Memberships starting at \\$2.50/m!](#)

**Follow me
on Twitter!**

@ConvertingColor