

Converting Colors

Hex(EE3570)

Have a look what the booklet for
Hex(EE3570) contains.

Hex(EE3570)	3
<i>Conversions</i>	4
<i>Details</i>	6
<i>Harmonies</i>	11
<i>Previews</i>	23
<i>Color Blindness Simulation</i>	26
<i>CSS Examples</i>	29

Color

Hex(E E3570)

Conversions

Conversions Part 1

Format	Color
Hex	EE3570
RGB	238, 53, 112
RGB Percent	93%, 21%, 44%
CMY	0.0667, 0.7922, 0.5608
CMYK	0.00, 0.78, 0.53, 0.07
HSL	341°, 84%, 57%
HSV	341°, 78%, 93%
XYZ	39.4576, 21.8932, 17.4754
YIQ	115.0410, 91.3210, 57.5690

Conversions

Conversions Part 2

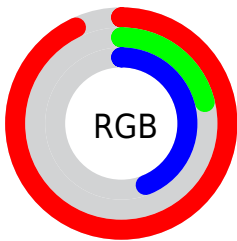
Format	Color
R_{YB}	238, 53, 112
Decimal	15611248
CIE _{Lab}	53.91, 71.64, 11.85
CIE _{LCh}	54, 72.616, 9.393
Yxy	21.8932, 0.5006, 0.2777
Android (android.graphics.Color)	4293801328 (0xFFEE3570)
YUV	115.0410, -1.4992, 107.8350
Hunter-Lab	46.7902, 68.6443, 10.6092

Details

The Hex color **EE3570** is a dark color, and the websafe version is hex **FF3366**. The color can be described as middle washed rose. A complement of this color would be **35EEB3**, and the grayscale version is **737373**.

A 20% lighter version of the original color is **FF75A3**, and **AF0041** is the 20% darker color. If you saturate the color by 10%, you get **EE1D60**, and if you desaturate by 10%, it is **EE4D80**.

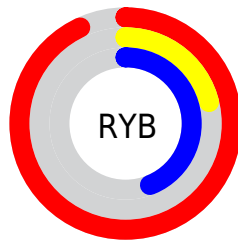
Distribution



Red (93%)

Green (21%)

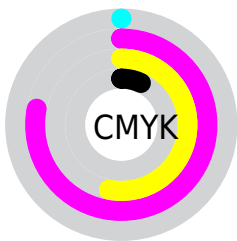
Blue (44%)



Red (93%)

Yellow (21%)

Blue (44%)

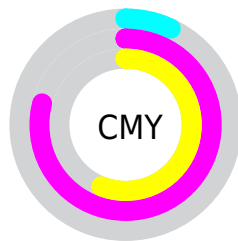


Cyan (0%)

Magenta (78%)

Yellow (53%)

Black (7%)



Cyan (7%)

Magenta (79%)

Yellow (56%)

Brightness & Saturation Gradients

These gradients show how the Hex color EE3570 changes by changing the brightness by 10 percent. The first figure shows a shift by +10% for each color and the second figure -10%.

Similar to the brightness gradients but the following saturation gradients show a change of the Hex color EE3570 by changing the saturation by 10% instead.

 EE3570

 EE3570

FFFFFF

 CF0058

 FF75A3

 AF0041

 FF92BE

 91002B

 FFB0DA

 720018

 FFCDF7

 540003

 FFE8FF

 360002

 060000

 000000

 EE3570

 EE3570

 EE1D60

 EE4D80

 EE0550

 EE6590

 EE004C

 EE7CA1

 EE94B1

 EEACCC1

 EEC4D1

 EEDCE1

 EEF3F2

 EEFFFF

Harmonies

Analogous

The Analogous color harmony consists of three colors that are next to each other on the color wheel.



D944AE



EE3570



E24E34

Triad

The Triadic color harmony groups three colors that are evenly spaced from another and form a triangle on the color wheel.



EE3570



429303



0094F7

Complementary

The Complementary color scheme is a pair of colors which are on the opposite of each other on the color wheel.



EE3570



35EEB3

Split Complementary

Split-complementary colors differ from the complementary color scheme. The scheme consists of three colors, the original color and two neighbors of the complement color.



009BCF



EE3570



009A52

Square

The Square scheme is like the rectangle color scheme, but the four colors are evenly spaced on the color wheel.



EE3570



8A8400



009C94



0082FE

Rectangle

The Rectangle color scheme consists of four colors that form a rectangle on the color wheel.



EE3570



CC6400



009C94



0097ED

Sweetspot

The Sweet Spot groups the original color and five complimentary colors.



EE3570



FFC4D7



B035EE



805C67



000000



808080

Same Dimension

The Same Dimension uses a secret algorithm to generate beautiful new colors.



EE3570



FF125D



EE5435



786C70



B8003B



380012

Inverse Universe

The Inverse Universe completely reimagines the original color for something new.



EE3570



FF125D



35CFEE



786C70



B8003B



380012

Previews

White Background



This preview shows how the Hex color EE3570 looks on a white background.

Color Contrast Check

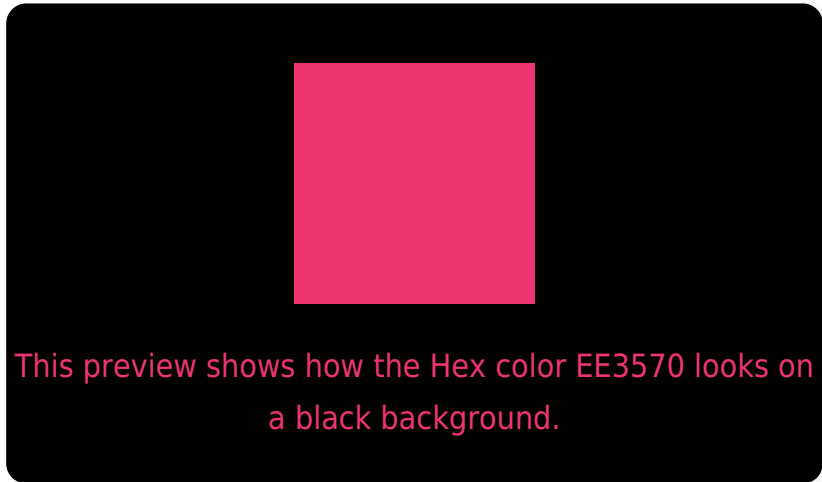
Large Text (above 18pt) WCAG AA ✓ Pass

Any Text WCAG AA × Fail

Large Text (above 18pt) WCAG AAA × Fail

Any Text WCAG AAA × Fail

Black Background



Color Contrast Check

Large Text (above 18pt) WCAG AA ✓ Pass

Any Text WCAG AA ✓ Pass

Large Text (above 18pt) WCAG AAA ✓ Pass

Any Text WCAG AAA × Fail

If you want to check with other color combinations, try the [Color Contrast Checker](#).

Hex EE3570 Background



This preview shows how black text looks on a background with the Hex color EE3570.



This preview shows how white text looks on a background with the Hex color EE3570.

Color Blindness Simulation

Color vision deficiency is a very complex topic, and I could not describe the different causes any better than Wikipedia does, so if you want to learn more, you should check out their [article about color blindness](#).

Dichromacy

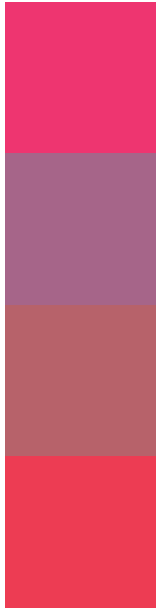


Original Color
EE3570

Protanopia
7D8097

Deuteranopia
977C67

Trichromacy



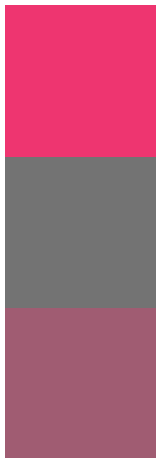
Original Color
EE3570

Protanomaly
A66589

Deuteranomaly
B7626A

Tritanomaly
ED3C53

Monochromacy



Original Color
EE3570

Achromatopsia
737373

Achromatomaly
A05C72

CSS Examples

Text

The CSS property to change the color of the text to Hex EE3570 is called "color". The color property can be set on classes, ids or directly on the HTML element.

This example shows how text in the color #EE3570 looks like.

```
.text, #text, p{  
    color:#EE3570  
}
```

If you want to add a text shadow in that color use the text-shadow property, you can generate a text shadow directly with our [CSS Text Shadow Generator](#).

Here you see how black text with a 4 pixel #EE3570 colored shadow looks like.

```
.shadow{ text-shadow: 4px 4px 2px #EE3570
}
```

Border

The CSS property to change the border of an element to Hex EE3570 is called "border". The border property can be set on classes, ids or directly on the HTML element.

This example shows the color as border, it can be applied via the CSS property "border" or "border-color".

```
.border, #border, table{ border:4px solid
#EE3570 }
```

If only the border color should be changed use the property `border-color`.

```
.border{ border-color:#EE3570 }
```

If you want to add a box shadow in that color use:

Here you see how a box with a 4 pixel #EE3570 colored shadow looks like.

```
.boxshadow{ -moz-box-shadow:4px 4px 4px  
4px #EE3570; -webkit-box-shadow:4px 4px  
4px 4px #EE3570; box-shadow:4px 4px 4px  
4px #EE3570 }
```

Background

The CSS property to change the background color of an element to Hex EE3570 is called "background". The background property can be set on classes, ids or directly on the HTML element.

```
.background, #background, body{  
background:#EE3570 }
```

If only the background color should be changed can be used:

```
.background{ background-color:#EE3570 }
```

This example shows the color as background, it is applied via the CSS property "background".

To optimize and compress your CSS code, you can use our [online CSS compressor and optimizer](#) based on csstidy. If you want to create a linear or radial gradient as background or border, check our [CSS Gradient Generator](#).

Hey! You found this booklet interesting? Support Converting Colors with the new Membership Option!

The pro membership hides all ads, plus gives you double the colors in the color bucket, and more awesome pro features!

[Learn more, Memberships starting at \\$2.50/m!](#)

**Follow me
on Twitter!**

@ConvertingColor