

Converting Colors

Hex(EE486F)

Have a look what the booklet for
Hex(EE486F) contains.

Hex(EE486F)	3
<i>Conversions</i>	4
<i>Details</i>	6
<i>Harmonies</i>	11
<i>Previews</i>	23
<i>Color Blindness Simulation</i>	26
<i>CSS Examples</i>	29

Color

Hex(E E486F)

Conversions

Conversions Part 1

Format	Color
Hex	EE486F
RGB	238, 72, 111
RGB Percent	93%, 28%, 44%
CMY	0.0667, 0.7176, 0.5647
CMYK	0.00, 0.70, 0.53, 0.07
HSL	346°, 83%, 61%
HSV	346°, 70%, 93%
XYZ	40.4465, 23.9596, 17.5318
YIQ	126.0800, 86.4170, 47.3210

Conversions

Conversions Part 2

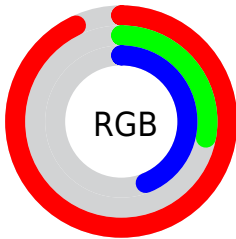
Format	Color
R_{YB}	238, 72, 111
Decimal	15616111
CIE _{Lab}	56.05, 65.53, 15.41
CIE _{LCh}	56, 67.323, 13.235
Yxy	23.9596, 0.4936, 0.2924
Android (android.graphics.Color)	4293806191 (0xFFEE486F)
YUV	126.0800, -7.4344, 98.1538
Hunter-Lab	48.9485, 61.8359, 13.0281

Details

The Hex color **EE486F** is a dark color, and the websafe version is hex **CC3366**. The color can be described as middle muted rose. A complement of this color would be **48EEC7**, and the grayscale version is **7E7E7E**.

A 20% lighter version of the original color is **FF83A2**, and **B00040** is the 20% darker color. If you saturate the color by 10%, you get **EE305D**, and if you desaturate by 10%, it is **EE6081**.

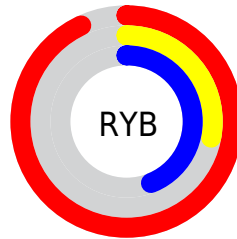
Distribution



Red (93%)

Green (28%)

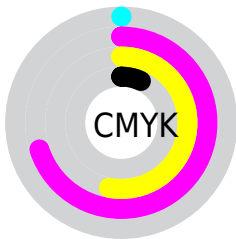
Blue (44%)



Red (93%)

Yellow (28%)

Blue (44%)

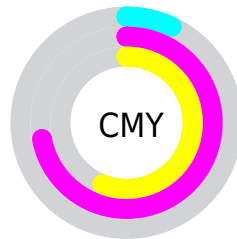


Cyan (0%)

Magenta (70%)

Yellow (53%)

Black (7%)



Cyan (7%)

Magenta (72%)

Yellow (56%)

Brightness & Saturation Gradients

These gradients show how the Hex color EE486F changes by changing the brightness by 10 percent. The first figure shows a shift by +10% for each color and the second figure -10%.

Similar to the brightness gradients but the following saturation gradients show a change of the Hex color EE486F by changing the saturation by 10% instead.

 EE486F

 EE486F

FFFFFF

 CF2657

 FF83A2

 B00040

 FFA0BD

 91002A

 FFBDD9

 730017

 FFDAF5

 550001

 FFF8FF

 380002

 0E0000

 000000

 EE486F

 EE486F

 EE305D

 EE6081

 EE184B

 EE7893

 EE0138

 EE8FA6

 EE0038

 EEA7B8

 EEBFCA

 EED7DC

 EEFEFE

 EEEFFF

Harmonies

Analogous

The Analogous color harmony consists of three colors that are next to each other on the color wheel.



DE4FAA



EE486F



E05D38

Triad

The Triadic color harmony groups three colors that are evenly spaced from another and form a triangle on the color wheel.



EE486F



449827



0096F7

Complementary

The Complementary color scheme is a pair of colors which are on the opposite of each other on the color wheel.



EE486F



48EEC7

Split Complementary

Split-complementary colors differ from the complementary color scheme. The scheme consists of three colors, the original color and two neighbors of the complement color.



009FD6



EE486F



009F62

Square

The Square scheme is like the rectangle color scheme, but the four colors are evenly spaced on the color wheel.



EE486F



898C00



00A19F



2885F9

Rectangle

The Rectangle color scheme consists of four colors that form a rectangle on the color wheel.



EE486F



CA6F11



00A19F



009AEF

Sweetspot

The Sweet Spot groups the original color and five complimentary colors.



EE486F



FFC9D6



C448EE



806067



000000



808080

Same Dimension

The Same Dimension uses a secret algorithm to generate beautiful new colors.



EE486F



FF295B



EE7248



786C6F



B8002B



38000D

Inverse Universe

The Inverse Universe completely reimagines the original color for something new.



EE486F



FF295B



48C4EE



786C6F



B8002B



38000D

Previews

White Background



This preview shows how the Hex color EE486F looks on a white background.

Color Contrast Check

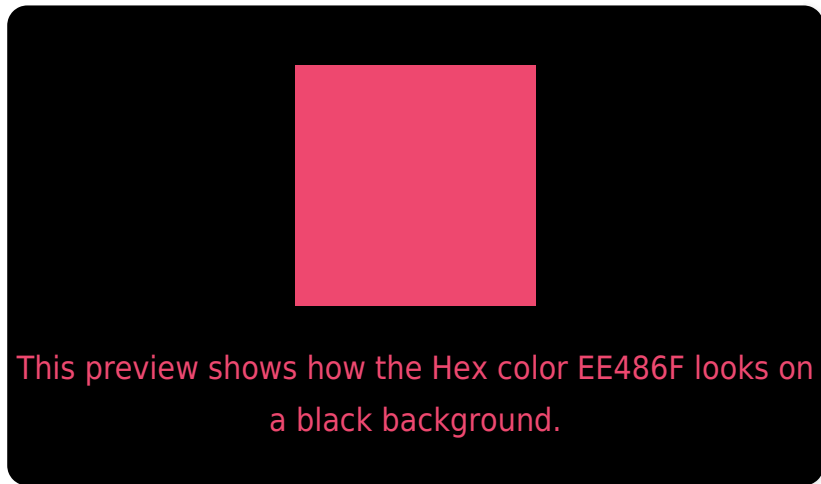
Large Text (above 18pt) WCAG AA ✓ Pass

Any Text WCAG AA × Fail

Large Text (above 18pt) WCAG AAA × Fail

Any Text WCAG AAA × Fail

Black Background



Color Contrast Check

Large Text (above 18pt) WCAG AA ✓ Pass

Any Text WCAG AA ✓ Pass

Large Text (above 18pt) WCAG AAA ✓ Pass

Any Text WCAG AAA × Fail

If you want to check with other color combinations, try the [Color Contrast Checker](#).

Hex EE486F Background



This preview shows how black text looks on a background with the Hex color EE486F.



This preview shows how white text looks on a background with the Hex color EE486F.

Color Blindness Simulation

Color vision deficiency is a very complex topic, and I could not describe the different causes any better than Wikipedia does, so if you want to learn more, you should check out their [article about color blindness](#).

Dichromacy



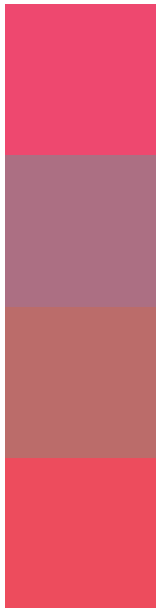
Original Color
EE486F

Protanopia
87868F

Deuteranopia
9E8167



Trichromacy



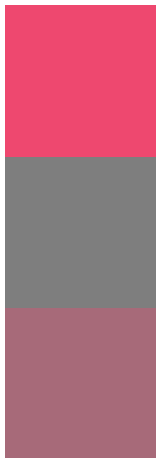
Original Color
EE486F

Protanomaly
AC6F83

Deuteranomaly
BB6C6A

Tritanomaly
ED4C5D

Monochromacy



Original Color
EE486F

Achromatopsia
7E7E7E

Achromatomaly
A76A79

CSS Examples

Text

The CSS property to change the color of the text to Hex EE486F is called "color". The color property can be set on classes, ids or directly on the HTML element.

This example shows how text in the color #EE486F looks like.

```
.text, #text, p{  
    color:#EE486F  
}
```

If you want to add a text shadow in that color use the text-shadow property, you can generate a text shadow directly with our [CSS Text Shadow Generator](#).

Here you see how black text with a 4 pixel #EE486F colored shadow looks like.

```
.shadow{ text-shadow: 4px 4px 2px #EE486F
}
```

Border

The CSS property to change the border of an element to Hex EE486F is called "border". The border property can be set on classes, ids or directly on the HTML element.

This example shows the color as border, it can be applied via the CSS property "border" or "border-color".

```
.border, #border, table{ border:4px solid
#EE486F }
```

If only the border color should be changed use the property `border-color`.

```
.border{ border-color:#EE486F }
```

If you want to add a box shadow in that color use:

Here you see how a box with a 4 pixel #EE486F colored shadow looks like.

```
.boxshadow{ -moz-box-shadow:4px 4px 4px  
4px #EE486F; -webkit-box-shadow:4px 4px  
4px 4px #EE486F; box-shadow:4px 4px 4px  
4px #EE486F }
```

Background

The CSS property to change the background color of an element to Hex EE486F is called "background". The background property can be set on classes, ids or directly on the HTML element.

```
.background, #background, body{  
background:#EE486F }
```

If only the background color should be changed can be used:

```
.background{ background-color:#EE486F }
```

This example shows the color as background, it is applied via the CSS property "background".

To optimize and compress your CSS code, you can use our [online CSS compressor and optimizer](#) based on csstidy. If you want to create a linear or radial gradient as background or border, check our [CSS Gradient Generator](#).

Hey! You found this booklet interesting? Support Converting Colors with the new Membership Option!

The pro membership hides all ads, plus gives you double the colors in the color bucket, and more awesome pro features!

[Learn more, Memberships starting at \\$2.50/m!](#)

**Follow me
on Twitter!**

@ConvertingColor