

# Converting Colors

Hex(EE5079)

Have a look what the booklet for  
Hex(EE5079) contains.

<b>Hex(EE5079)</b> .....	3
<i><b>Conversions</b></i> .....	4
<i><b>Details</b></i> .....	6
<i><b>Harmonies</b></i> .....	11
<i><b>Previews</b></i> .....	23
<i><b>Color Blindness Simulation</b></i> .....	26
<i><b>CSS Examples</b></i> .....	29

# Color

**Hex(E E5079)**

# Conversions

## Conversions Part 1

Format	Color
Hex	EE5079
RGB	238, 80, 121
RGB Percent	93%, 31%, 47%
CMY	0.0667, 0.6863, 0.5255
CMYK	0.00, 0.66, 0.49, 0.07
HSL	344°, 82%, 62%
HSV	344°, 66%, 93%
XYZ	41.5797, 25.2949, 20.7801
YIQ	131.9160, 81.0070, 46.2470

# Conversions

## Conversions Part 2

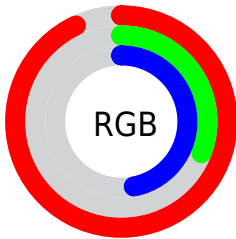
<b>Format</b>	<b>Color</b>
<b>R<sub>YB</sub></b>	238, 80, 121
Decimal	15618169
CIE <sub>Lab</sub>	57.36, 63.35, 11.34
CIE <sub>LCh</sub>	57, 64.356, 10.146
Yxy	25.2949, 0.4744, 0.2886
Android (android.graphics.Color)	4293808249 (0xFFEE5079)
YUV	131.9160, -5.3816, 93.0357
Hunter-Lab	50.2941, 59.5571, 10.7089

# Details

The Hex color **EE5079** is a dark color, and the websafe version is hex **FF6699**. The color can be described as middle muted rose. A complement of this color would be **50EEC5**, and the grayscale version is **848484**.

A 20% lighter version of the original color is **FF8AAD**, and **B00049** is the 20% darker color. If you saturate the color by 10%, you get **EE3867**, and if you desaturate by 10%, it is **EE688B**.

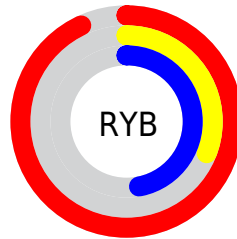
# Distribution



Red (93%)

Green (31%)

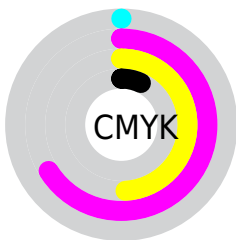
Blue (47%)



Red (93%)

Yellow (31%)

Blue (47%)

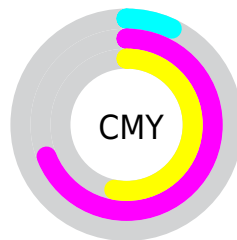


Cyan (0%)

Magenta (66%)

Yellow (49%)

Black (7%)



Cyan (7%)

Magenta (69%)

Yellow (53%)

# Brightness & Saturation Gradients

These gradients show how the Hex color EE5079 changes by changing the brightness by 10 percent. The first figure shows a shift by +10% for each color and the second figure -10%.

Similar to the brightness gradients but the following saturation gradients show a change of the Hex color EE5079 by changing the saturation by 10% instead.



 EE5079

 EE5079

FFFFFF

 CF3160

 FF8AAD

 B00049

 FFA6C8

 920033

 FFC3E4

 74001E

 FFE1FF

 570004

FFFEFF

 3B0002

 140000

 000000

 EE5079

 EE5079

 EE3867

 EE688B

 EE2056

 EE809C

 EE0944

 EE97AE

 EE003E

 EEAFBF

 EEC7D1

 EEDFE3

 EE7F4

 EEFFFF

# Harmonies

## Analogous

The Analogous color harmony consists of three colors that are next to each other on the color wheel.



DB59B1



EE5079



E36144

# Triad

The Triadic color harmony groups three colors that are evenly spaced from another and form a triangle on the color wheel.



EE5079



559A2A



009AF3

# Complementary

The Complementary color scheme is a pair of colors which are on the opposite of each other on the color wheel.



EE5079



50EEC5

# Split Complementary

Split-complementary colors differ from the complementary color scheme. The scheme consists of three colors, the original color and two neighbors of the complement color.



00A2D1



EE5079



00A161

# Square

The Square scheme is like the rectangle color scheme, but the four colors are evenly spaced on the color wheel.



EE5079



938D00



00A49C



1E8AF9

# Rectangle

The Rectangle color scheme consists of four colors that form a rectangle on the color wheel.



EE5079



D07123



00A49C



009EEB



# Sweetspot

The Sweet Spot groups the original color and five complimentary colors.



EE5079



FFCCD9



C450EE



806169



000000



808080



# Same Dimension

The Same Dimension uses a secret algorithm to generate beautiful new colors.



EE5079



FF3368



EE7550



786C6F



B80030



38000F



# Inverse Universe

The Inverse Universe completely reimagines the original color for something new.



EE5079



FF3368



50C9EE



786C6F



B80030



38000F



# Previews

## White Background



This preview shows how the Hex color EE5079 looks on a white background.

## Color Contrast Check

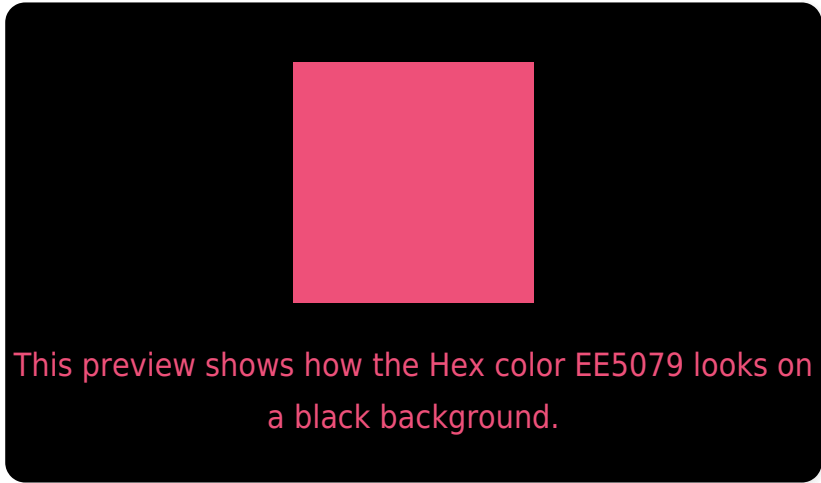
Large Text (above 18pt) WCAG AA ✓ Pass

Any Text WCAG AA × Fail

Large Text (above 18pt) WCAG AAA × Fail

Any Text WCAG AAA × Fail

# Black Background



## Color Contrast Check

Large Text (above 18pt) WCAG AA ✓ Pass

Any Text WCAG AA ✓ Pass

Large Text (above 18pt) WCAG AAA ✓ Pass

Any Text WCAG AAA × Fail

If you want to check with other color combinations, try the [Color Contrast Checker](#).



## Hex EE5079 Background



This preview shows how black text looks on a background with the Hex color EE5079.

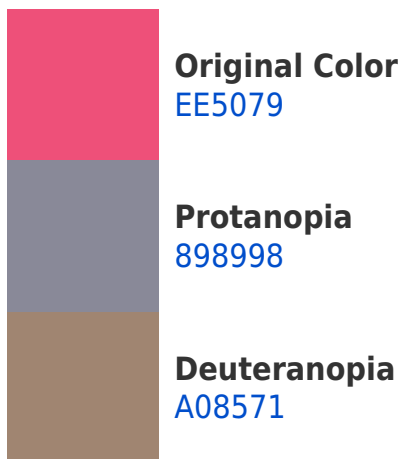


This preview shows how white text looks on a background with the Hex color EE5079.

# Color Blindness Simulation

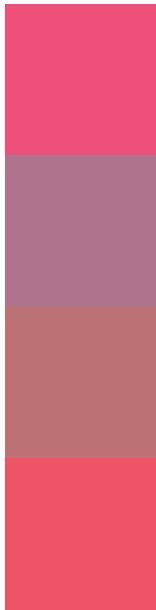
Color vision deficiency is a very complex topic, and I could not describe the different causes any better than Wikipedia does, so if you want to learn more, you should check out their [article about color blindness](#).

## Dichromacy





# Trichromacy



**Original Color**  
EE5079

**Protanomaly**  
AE748D

**Deuteranomaly**  
BC7274

**Tritanomaly**  
ED5466

# Monochromacy



**Original Color**  
EE5079

**Achromatopsia**  
848484

**Achromatomaly**  
AB7180

# CSS Examples

## Text

The CSS property to change the color of the text to Hex EE5079 is called "color". The color property can be set on classes, ids or directly on the HTML element.

This example shows how text in the color #EE5079 looks like.

```
.text, #text, p{  
    color:#EE5079  
}
```

If you want to add a text shadow in that color use the text-shadow property, you can generate a text shadow directly with our [CSS Text Shadow Generator](#).

Here you see how black text with a 4 pixel #EE5079 colored shadow looks like.

```
.shadow{ text-shadow: 4px 4px 2px #EE5079
}
```

## Border

The CSS property to change the border of an element to Hex EE5079 is called "border". The border property can be set on classes, ids or directly on the HTML element.

This example shows the color as border, it can be applied via the CSS property "border" or "border-color".

```
.border, #border, table{ border:4px solid
#EE5079 }
```

If only the border color should be changed use the property `border-color`.

```
.border{ border-color:#EE5079 }
```

If you want to add a box shadow in that color use:

Here you see how a box with a 4 pixel #EE5079 colored shadow looks like.

```
.boxshadow{ -moz-box-shadow:4px 4px 4px  
4px #EE5079; -webkit-box-shadow:4px 4px  
4px 4px #EE5079; box-shadow:4px 4px 4px  
4px #EE5079 }
```

# Background

The CSS property to change the background color of an element to Hex EE5079 is called "background". The background property can be set on classes, ids or directly on the HTML element.

```
.background, #background, body{  
background:#EE5079 }
```

If only the background color should be changed can be used:

```
.background{ background-color:#EE5079 }
```

This example shows the color as background, it is applied via the CSS property "background".

To optimize and compress your CSS code, you can use our [online CSS compressor and optimizer](#) based on csstidy. If you want to create a linear or radial gradient as background or border, check our [CSS Gradient Generator](#).



Hey! You found this booklet interesting? Support Converting Colors with the new Membership Option!

The pro membership hides all ads, plus gives you double the colors in the color bucket, and more awesome pro features!

**[Learn more, Memberships starting at \\$2.50/m!](#)**

**Follow me  
on Twitter!**

@ConvertingColor