

Converting Colors

Hex(EF567A)

Have a look what the booklet for
Hex(EF567A) contains.

Hex(EF567A)	3
<i>Conversions</i>	4
<i>Details</i>	6
<i>Harmonies</i>	11
<i>Previews</i>	23
<i>Color Blindness Simulation</i>	26
<i>CSS Examples</i>	29

Color

Hex(E E567A)

Conversions

Conversions Part 1

Format	Color
Hex	EE567A
RGB	238, 86, 122
RGB Percent	93%, 34%, 48%
CMY	0.0667, 0.6627, 0.5216
CMYK	0.00, 0.64, 0.49, 0.07
HSL	346°, 82%, 64%
HSV	346°, 64%, 93%
XYZ	42.1005, 26.2379, 21.2578
YIQ	135.5520, 79.0360, 43.4200

Conversions

Conversions Part 2

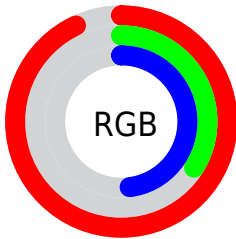
Format	Color
R_{YB}	238, 86, 122
Decimal	15619706
CIE _{Lab}	58.26, 61.05, 12.01
CIE _{LCh}	58, 62.217, 11.133
Yxy	26.2379, 0.4699, 0.2928
Android (android.graphics.Color)	4293809786 (0xFFEE567A)
YUV	135.5520, -6.6811, 89.8469
Hunter-Lab	51.2229, 57.0706, 11.2503

Details

The Hex color **EE567A** is a dark color, and the websafe version is hex **FF6699**. The color can be described as middle muted rose. A complement of this color would be **56EECA**, and the grayscale version is **888888**.

A 20% lighter version of the original color is **FF8FAE**, and **B1124A** is the 20% darker color. If you saturate the color by 10%, you get **EE3E68**, and if you desaturate by 10%, it is **EE6E8C**.

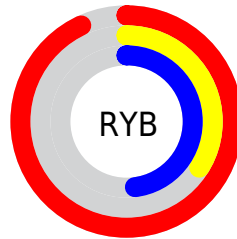
Distribution



Red (93%)

Green (34%)

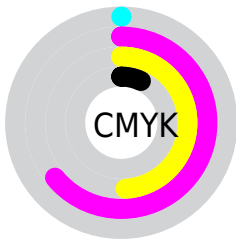
Blue (48%)



Red (93%)

Yellow (34%)

Blue (48%)

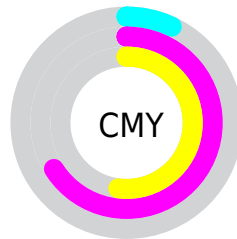


Cyan (0%)

Magenta (64%)

Yellow (49%)

Black (7%)



Cyan (7%)

Magenta (66%)

Yellow (52%)

Brightness & Saturation Gradients

These gradients show how the Hex color EE567A changes by changing the brightness by 10 percent. The first figure shows a shift by +10% for each color and the second figure -10%.

Similar to the brightness gradients but the following saturation gradients show a change of the Hex color EE567A by changing the saturation by 10% instead.

 EE567A

 EE567A

FFFFFF

 CF3861

 FF8FAE

 B1124A

 FFABC9

 930033

 FFC8E6

 75001F

 FFE6FF

 580006

 3C0003

 160000

 000000

 EE567A

 EE567A

 EE3E68

 EE6E8C

 EE2656

 EE869E

 EE0F44

 EE9DB0

 EE0038

 EEB5C3

 EECDD5

 EEE5E7

 EEFD9

 EEFFFF

Harmonies

Analogous

The Analogous color harmony consists of three colors that are next to each other on the color wheel.



DC5DB1



EE567A



E36647

Triad

The Triadic color harmony groups three colors that are evenly spaced from another and form a triangle on the color wheel.



EE567A



589D33



009CF3

Complementary

The Complementary color scheme is a pair of colors which are on the opposite of each other on the color wheel.



EE567A



56EECA

Split Complementary

Split-complementary colors differ from the complementary color scheme. The scheme consists of three colors, the original color and two neighbors of the complement color.



00A4D3



EE567A



00A367

Square

The Square scheme is like the rectangle color scheme, but the four colors are evenly spaced on the color wheel.



EE567A



949007



00A69F



398CF8

Rectangle

The Rectangle color scheme consists of four colors that form a rectangle on the color wheel.



EE567A



CF7529



00A69F



009FEB

Sweetspot

The Sweet Spot groups the original color and five complimentary colors.



EE567A



FFCFDA



C856EE



806269



000000



808080

Same Dimension

The Same Dimension uses a secret algorithm to generate beautiful new colors.



EE567A



FF3B69



EE7C56



786C6F



B8002B



38000D

Inverse Universe

The Inverse Universe completely reimagines the original color for something new.



EE567A



FF3B69



56C8EE



786C6F



B8002B



38000D

Previews

White Background



This preview shows how the Hex color EE567A looks on a white background.

Color Contrast Check

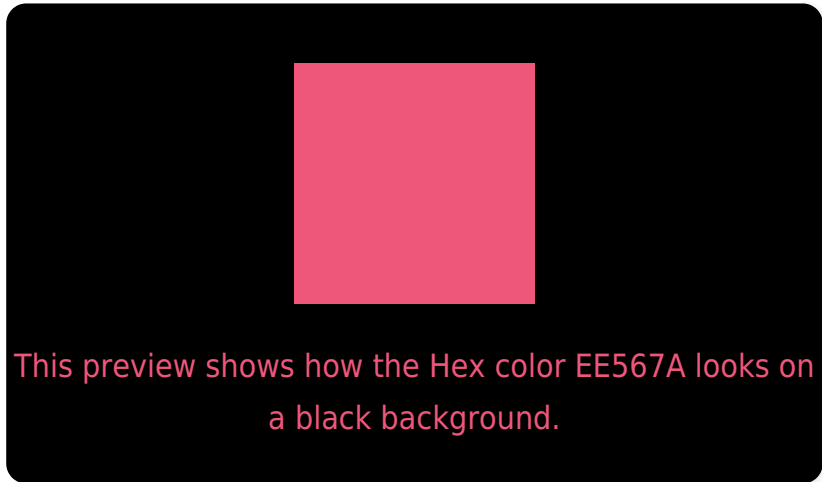
Large Text (above 18pt) WCAG AA ✓ Pass

Any Text WCAG AA ✗ Fail

Large Text (above 18pt) WCAG AAA ✗ Fail

Any Text WCAG AAA ✗ Fail

Black Background



Color Contrast Check

Large Text (above 18pt) WCAG AA ✓ Pass

Any Text WCAG AA ✓ Pass

Large Text (above 18pt) WCAG AAA ✓ Pass

Any Text WCAG AAA × Fail

If you want to check with other color combinations, try the [Color Contrast Checker](#).

Hex EE567A Background



This preview shows how black text looks on a background with the Hex color EE567A.



This preview shows how white text looks on a background with the Hex color EE567A.

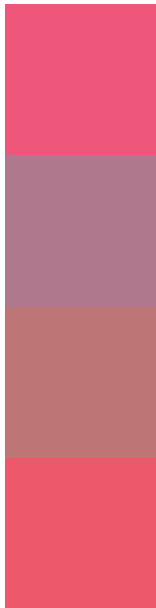
Color Blindness Simulation

Color vision deficiency is a very complex topic, and I could not describe the different causes any better than Wikipedia does, so if you want to learn more, you should check out their [article about color blindness](#).

Dichromacy



Trichromacy



Original Color
EE567A

Protanomaly
B0788C

Deuteranomaly
BE7576

Tritanomaly
ED596A

Monochromacy



Original Color
EE567A

Achromatopsia
888888

Achromatomaly
AD7683

CSS Examples

Text

The CSS property to change the color of the text to Hex EE567A is called "color". The color property can be set on classes, ids or directly on the HTML element.

This example shows how text in the color #EE567A looks like.

```
.text, #text, p{  
    color:#EE567A  
}
```

If you want to add a text shadow in that color use the text-shadow property, you can generate a text shadow directly with our [CSS Text Shadow Generator](#).

Here you see how black text with a 4 pixel #EE567A colored shadow looks like.

```
.shadow{ text-shadow: 4px 4px 2px #EE567A
}
```

Border

The CSS property to change the border of an element to Hex EE567A is called "border". The border property can be set on classes, ids or directly on the HTML element.

This example shows the color as border, it can be applied via the CSS property "border" or "border-color".

```
.border, #border, table{ border:4px solid
#EE567A }
```

If only the border color should be changed use the property `border-color`.

```
.border{ border-color:#EE567A }
```

If you want to add a box shadow in that color use:

Here you see how a box with a 4 pixel #EE567A colored shadow looks like.

```
.boxshadow{ -moz-box-shadow:4px 4px 4px  
4px #EE567A; -webkit-box-shadow:4px 4px  
4px 4px #EE567A; box-shadow:4px 4px 4px  
4px #EE567A }
```

Background

The CSS property to change the background color of an element to Hex EE567A is called "background". The background property can be set on classes, ids or directly on the HTML element.

```
.background, #background, body{  
background:#EE567A }
```

If only the background color should be changed can be used:

```
.background{ background-color:#EE567A }
```

This example shows the color as background, it is applied via the CSS property "background".

To optimize and compress your CSS code, you can use our [online CSS compressor and optimizer](#) based on csstidy. If you want to create a linear or radial gradient as background or border, check our [CSS Gradient Generator](#).

Hey! You found this booklet interesting? Support Converting Colors with the new Membership Option!

The pro membership hides all ads, plus gives you double the colors in the color bucket, and more awesome pro features!

[Learn more, Memberships starting at \\$2.50/m!](#)

**Follow me
on Twitter!**

@ConvertingColor