

# Converting Colors

Hex(EE5DDB)

Have a look what the booklet for  
Hex(EF5DDB) contains.

<b>Hex(EF5DDB)</b> .....	3
<i><b>Conversions</b></i> .....	4
<i><b>Details</b></i> .....	6
<i><b>Harmonies</b></i> .....	11
<i><b>Previews</b></i> .....	23
<i><b>Color Blindness Simulation</b></i> .....	26
<i><b>CSS Examples</b></i> .....	29

# Color

Hex(**EE5DDB**)

# Conversions

## Conversions Part 1

Format	Color
Hex	EE5DDB
RGB	238, 93, 219
RGB Percent	93%, 36%, 86%
CMY	0.0667, 0.6353, 0.1412
CMYK	0.00, 0.61, 0.08, 0.07
HSL	308°, 81%, 65%
HSV	308°, 61%, 93%
XYZ	51.9604, 31.1203, 70.2860
YIQ	150.7190, 45.9740, 69.9260

# Conversions

## Conversions Part 2

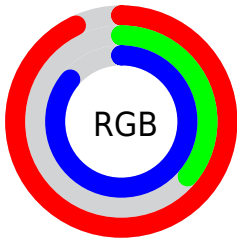
<b>Format</b>	<b>Color</b>
R <sub>Y</sub> B	238, 93, 219
Decimal	15621595
CIE <sub>Lab</sub>	62.61, 70.00, -37.32
CIE <sub>LCh</sub>	63, 79.328, 331.940
Yxy	31.1203, 0.3388, 0.2029
Android (android.graphics.Color)	4293811675 (0xFFEE5DDB)
YUV	150.7190, 33.6625, 76.5454
Hunter-Lab	55.7856, 68.6357, -35.6514

# Details

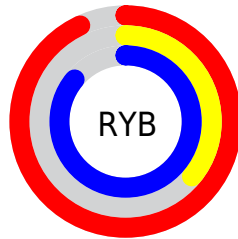
The Hex color **EE5DDB** is a light color, and the websafe version is hex **FF66FF**. The color can be described as light muted magenta. A complement of this color would be **5DEE70**, and the grayscale version is **969696**.

A 20% lighter version of the original color is **FF97FF**, and **B319A4** is the 20% darker color. If you saturate the color by 10%, you get **EE45D8**, and if you desaturate by 10%, it is **EE75DE**.

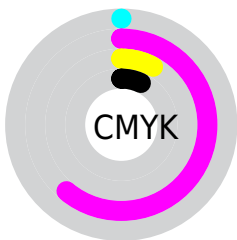
# Distribution



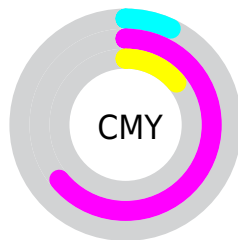
- Red (93%)
- Green (36%)
- Blue (86%)



- Red (93%)
- Yellow (36%)
- Blue (86%)



- Cyan (0%)
- Magenta (61%)
- Yellow (8%)
- Black (7%)



- Cyan (7%)
- Magenta (64%)
- Yellow (14%)

# Brightness & Saturation Gradients

These gradients show how the Hex color EE5DDB changes by changing the brightness by 10 percent. The first figure shows a shift by +10% for each color and the second figure -10%.

Similar to the brightness gradients but the following saturation gradients show a change of the Hex color EE5DDB by changing the saturation by 10% instead.



 EE5DDB

 EE5DDB

FFFFFF

 D03FBF

 FF97FF

 B319A4

 FFB4FF

 960089

 FFD1FF

 79006F

 FFEFFF

 5E0056

 43003E

 270028

 000111

 000000

 EE5DDB

 EE5DDB

 EE45D8

 EE75DE

 EE2DD5

 EE8DE1

 EE16D2

 EEA4E4

 EE00CF

 EEBCE7

 EED4EB

 EEECEE

 EEFFF1

 EEFFF4

 EEFFF7

# Harmonies

## Analogous

The Analogous color harmony consists of three colors that are next to each other on the color wheel.



9882FF



EE5DDB



FF4496

# Triad

The Triadic color harmony groups three colors that are evenly spaced from another and form a triangle on the color wheel.



EE5DDB



B29600



00B6E1

# Complementary

The Complementary color scheme is a pair of colors which are on the opposite of each other on the color wheel.



EE5DDB



5DEE70

# Split Complementary

Split-complementary colors differ from the complementary color scheme. The scheme consists of three colors, the original color and two neighbors of the complement color.



00B69A



EE5DDB



6AA800

# Square

The Square scheme is like the rectangle color scheme, but the four colors are evenly spaced on the color wheel.



EE5DDB



E97A00



00B250



00AFFF

# Rectangle

The Rectangle color scheme consists of four colors that form a rectangle on the color wheel.



EE5DDB



FF4D68



00B250



00B7CA



# Sweetspot

The Sweet Spot groups the original color and five complimentary colors.



EE5DDB



FFD1F9



6E5DEE



80637C



000000



808080



# Same Dimension

The Same Dimension uses a secret algorithm to generate beautiful new colors.



EE5DDB



FF45E7



EE5D95



786C76



B800A0



380031



# Inverse Universe

The Inverse Universe completely reimagines the original color for something new.



EE5DDB



FF45E7



5DEEB6



786C76



B800A0

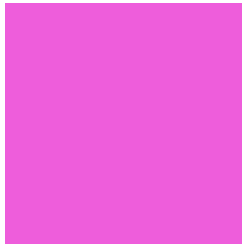


380031



# Previews

## White Background



This preview shows how the Hex color EE5DDB looks on a white background.

## Color Contrast Check

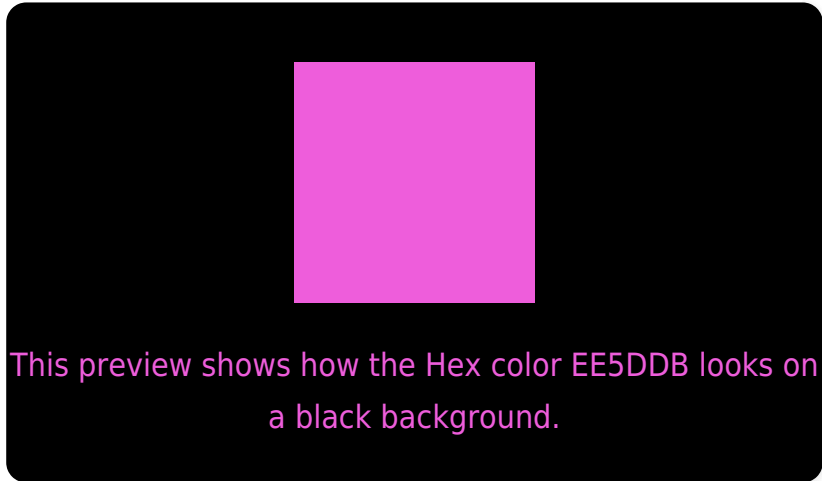
Large Text (above 18pt) WCAG AA × Fail

Any Text WCAG AA × Fail

Large Text (above 18pt) WCAG AAA × Fail

Any Text WCAG AAA × Fail

# Black Background



## Color Contrast Check

Large Text (above 18pt) WCAG AA ✓ Pass

Any Text WCAG AA ✓ Pass

Large Text (above 18pt) WCAG AAA ✓ Pass

Any Text WCAG AAA ✓ Pass

If you want to check with other color combinations, try the [Color Contrast Checker](#).



## Hex EE5DDB Background



This preview shows how black text looks on a background with the Hex color EE5DDB.

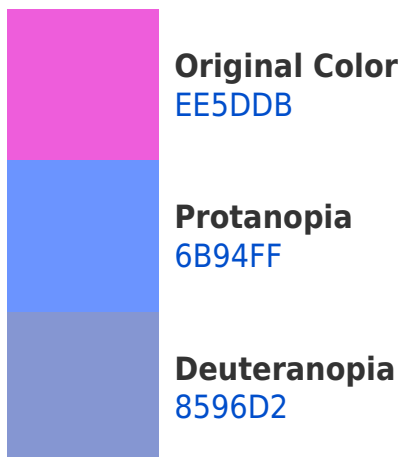


This preview shows how white text looks on a background with the Hex color EE5DDB.

# Color Blindness Simulation

Color vision deficiency is a very complex topic, and I could not describe the different causes any better than Wikipedia does, so if you want to learn more, you should check out their [article about color blindness](#).

## Dichromacy





**Tritanopia**  
E4767E

# Trichromacy



**Original Color**  
EE5DDB



**Protanomaly**  
9B80F2



**Deuteranomaly**  
AB81D5



**Tritanomaly**  
E86DA0

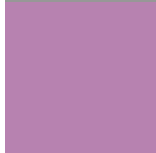
# Monochromacy



**Original Color**  
EE5DDB



**Achromatopsia**  
979797



**Achromatomaly**  
B782B0

# CSS Examples

## Text

The CSS property to change the color of the text to Hex EE5DDB is called "color". The color property can be set on classes, ids or directly on the HTML element.

This example shows how text in the color #EE5DDB looks like.

```
.text, #text, p{  
    color:#EE5DDB  
}
```

If you want to add a text shadow in that color use the text-shadow property, you can generate a text shadow directly with our [CSS Text Shadow Generator](#).

Here you see how black text with a 4 pixel #EE5DDB colored shadow looks like.

```
.shadow{ text-shadow: 4px 4px 2px #EE5DDB
}
```

## Border

The CSS property to change the border of an element to Hex EE5DDB is called "border". The border property can be set on classes, ids or directly on the HTML element.

This example shows the color as border, it can be applied via the CSS property "border" or "border-color".

```
.border, #border, table{ border:4px solid
#EE5DDB }
```

If only the border color should be changed use the property `border-color`.

```
.border{ border-color:#EE5DDB }
```

If you want to add a box shadow in that color use:

Here you see how a box with a 4 pixel #EE5DDB colored shadow looks like.

```
.boxshadow{ -moz-box-shadow:4px 4px 4px  
4px #EE5DDB; -webkit-box-shadow:4px 4px  
4px 4px #EE5DDB; box-shadow:4px 4px 4px  
4px #EE5DDB }
```

# Background

The CSS property to change the background color of an element to Hex EE5DDB is called "background". The background property can be set on classes, ids or directly on the HTML element.

```
.background, #background, body{  
background:#EE5DDB }
```

If only the background color should be changed can be used:

```
.background{ background-color:#EE5DDB }
```

This example shows the color as background, it is applied via the CSS property "background".

To optimize and compress your CSS code, you can use our [online CSS compressor and optimizer](#) based on csstidy. If you want to create a linear or radial gradient as background or border, check our [CSS Gradient Generator](#).



Hey! You found this booklet interesting? Support Converting Colors with the new Membership Option!

The pro membership hides all ads, plus gives you double the colors in the color bucket, and more awesome pro features!

**[Learn more, Memberships starting at \\$2.50/m!](#)**

**Follow me  
on Twitter!**

@ConvertingColor