

# Converting Colors

Hex(EF7848)

Have a look what the booklet for  
Hex(EE7848) contains.

<b>Hex(EE7848)</b> .....	3
<b><i>Conversions</i></b> .....	4
<b><i>Details</i></b> .....	6
<b><i>Harmonies</i></b> .....	11
<b><i>Previews</i></b> .....	23
<b><i>Color Blindness Simulation</i></b> .....	26
<b><i>CSS Examples</i></b> .....	29

# **Color**

**Hex(EE7848)**

# Conversions

## Conversions Part 1

<b>Format</b>	<b>Color</b>
Hex	EE7848
RGB	238, 120, 72
RGB Percent	93%, 47%, 28%
CMY	0.0667, 0.5294, 0.7176
CMYK	0.00, 0.50, 0.70, 0.07
HSL	17°, 83%, 61%
HSV	17°, 70%, 93%
XYZ	43.1461, 32.0780, 10.0485
YIQ	149.8100, 85.7360, 10.0880

# Conversions

## Conversions Part 2

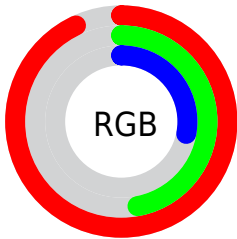
Format	Color
R <sub>Y</sub> B	238, 140, 72
Decimal	15628360
CIE Lab	63.41, 42.00, 46.53
CIE LCh	63, 62.679, 47.929
Yxy	32.0780, 0.5060, 0.3762
Android (android.graphics.Color)	4293818440 (0xFFEE7848)
YUV	149.8100, -38.3603, 77.3426
Hunter-Lab	56.6374, 36.8648, 29.1271

# Details

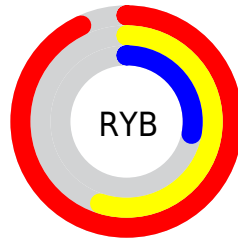
The Hex color **EE7848** is a dark color, and the websafe version is hex **CC6633**. The color can be described as middle muted orange. A complement of this color would be **48BEEE**, and the grayscale version is **969696**.

A 20% lighter version of the original color is **FFAE7A**, and **B04418** is the 20% darker color. If you saturate the color by 10%, you get **EE6730**, and if you desaturate by 10%, it is **EE8960**.

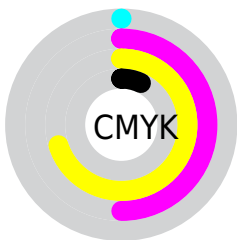
# Distribution



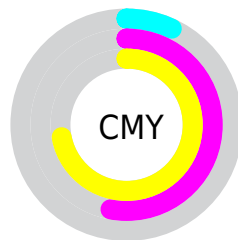
- Red (93%)
- Green (47%)
- Blue (28%)



- Red (93%)
- Yellow (55%)
- Blue (28%)



- Cyan (0%)
- Magenta (50%)
- Yellow (70%)
- Black (7%)



- Cyan (7%)
- Magenta (53%)
- Yellow (72%)

# Brightness & Saturation Gradients

These gradients show how the Hex color EE7848 changes by changing the brightness by 10 percent. The first figure shows a shift by +10% for each color and the second figure -10%.

Similar to the brightness gradients but the following saturation gradients show a change of the Hex color EE7848 by changing the saturation by 10% instead.



 EE7848

 EE7848

FFFFFF

 CF5E30

 FFAE7A

 B04418

 FFCA95

 922A00

 FFE7B0

 740B00

 FFFF00

 560000

 FFFF00

 3B0000

 1B0001

 000000

 EE7848

 EE7848

 EE6730

 EE8960

 EE5618

 EE9A78

 EE4501

 EEAB8F

 EE4500

 EEBCA7

 EECDBF

 EEDED7

 EEEEEF

 EEEFFF

# Harmonies

## Analogous

The Analogous color harmony consists of three colors that are next to each other on the color wheel.



FF667A



EE7848



C98F22

# Triad

The Triadic color harmony groups three colors that are evenly spaced from another and form a triangle on the color wheel.



EE7848



00B380



6E94FF

# Complementary

The Complementary color scheme is a pair of colors which are on the opposite of each other on the color wheel.



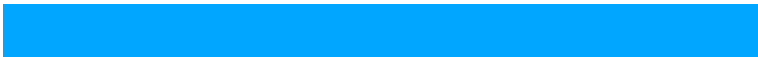
EE7848



48BEEE

# Split Complementary

Split-complementary colors differ from the complementary color scheme. The scheme consists of three colors, the original color and two neighbors of the complement color.



00A6FF



EE7848



00B4BA

# Square

The Square scheme is like the rectangle color scheme, but the four colors are evenly spaced on the color wheel.



EE7848



53AD4A



00B1EB



C67CE5

# Rectangle

The Rectangle color scheme consists of four colors that form a rectangle on the color wheel.



EE7848



A89C1A



00B1EB



369BFF

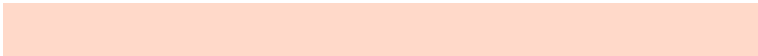


# Sweetspot

The Sweet Spot groups the original color and five complimentary colors.



EE7848



FFD9C9



EE48BF



806960



000000



808080



# Same Dimension

The Same Dimension uses a secret algorithm to generate beautiful new colors.



EE7848



FF6729



EECA48



786F6C



B83500



381000



# Inverse Universe

The Inverse Universe completely reimagines the original color for something new.



48BEEE



29C1FF



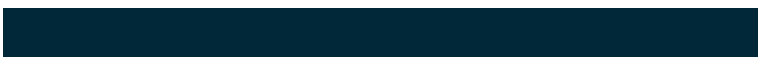
486CEE



6C7478



0083B8



002838



# Previews

## White Background



This preview shows how the Hex color EE7848 looks on a white background.

## Color Contrast Check

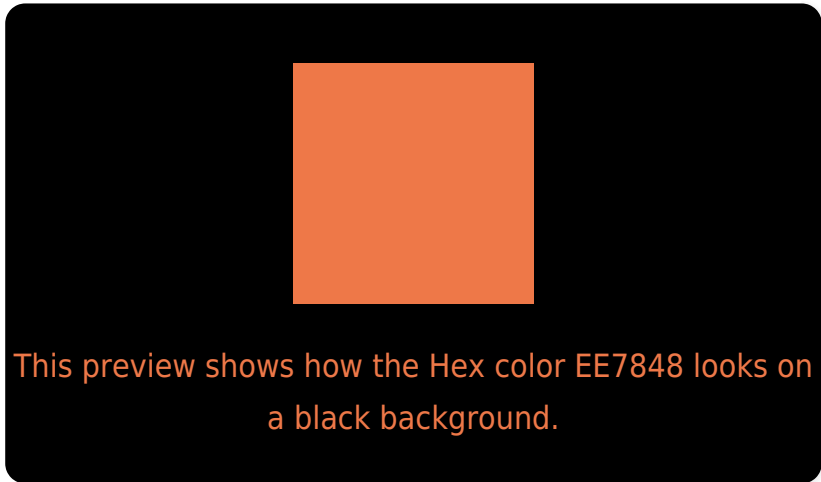
Large Text (above 18pt) WCAG AA × Fail

Any Text WCAG AA × Fail

Large Text (above 18pt) WCAG AAA × Fail

Any Text WCAG AAA × Fail

# Black Background



## Color Contrast Check

Large Text (above 18pt) WCAG AA ✓ Pass

Any Text WCAG AA ✓ Pass

Large Text (above 18pt) WCAG AAA ✓ Pass

Any Text WCAG AAA ✓ Pass

If you want to check with other color combinations, try the [Color Contrast Checker](#).



## Hex EE7848 Background



This preview shows how black text looks on a background with the Hex color EE7848.

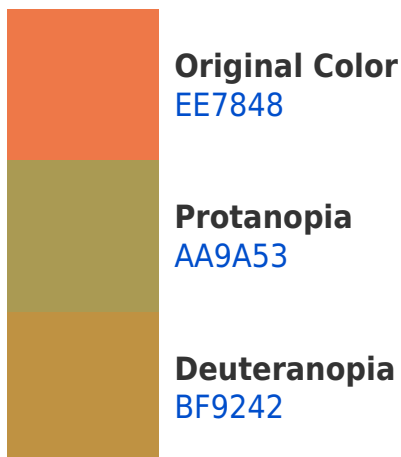


This preview shows how white text looks on a background with the Hex color EE7848.

# Color Blindness Simulation

Color vision deficiency is a very complex topic, and I could not describe the different causes any better than Wikipedia does, so if you want to learn more, you should check out their [article about color blindness](#).

## Dichromacy





**Tritanopia**  
F1727A

# Trichromacy



**Original Color**  
EE7848



**Protanomaly**  
C38E4F



**Deuteranomaly**  
D08944



**Tritanomaly**  
F07468

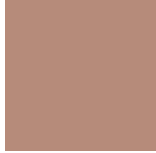
# Monochromacy



**Original Color**  
EE7848



**Achromatopsia**  
969696



**Achromatomaly**  
B68B7A

# CSS Examples

## Text

The CSS property to change the color of the text to Hex EE7848 is called "color". The color property can be set on classes, ids or directly on the HTML element.

This example shows how text in the color #EE7848 looks like.

```
.text, #text, p{  
    color:#EE7848  
}
```

If you want to add a text shadow in that color use the text-shadow property, you can generate a text shadow directly with our [CSS Text Shadow Generator](#).

Here you see how black text with a 4 pixel #EE7848 colored shadow looks like.

```
.shadow{ text-shadow: 4px 4px 2px #EE7848
}
```

## Border

The CSS property to change the border of an element to Hex EE7848 is called "border". The border property can be set on classes, ids or directly on the HTML element.

This example shows the color as border, it can be applied via the CSS property "border" or "border-color".

```
.border, #border, table{ border:4px solid
#EE7848 }
```

If only the border color should be changed use the property `border-color`.

```
.border{ border-color:#EE7848 }
```

If you want to add a box shadow in that color use:

Here you see how a box with a 4 pixel #EE7848 colored shadow looks like.

```
.boxshadow{ -moz-box-shadow:4px 4px 4px  
4px #EE7848; -webkit-box-shadow:4px 4px  
4px 4px #EE7848; box-shadow:4px 4px 4px  
4px #EE7848 }
```

# Background

The CSS property to change the background color of an element to Hex EE7848 is called "background". The background property can be set on classes, ids or directly on the HTML element.

```
.background, #background, body{  
background:#EE7848 }
```

If only the background color should be changed can be used:

```
.background{ background-color:#EE7848 }
```

This example shows the color as background, it is applied via the CSS property "background".

To optimize and compress your CSS code, you can use our [online CSS compressor and optimizer](#) based on csstidy. If you want to create a linear or radial gradient as background or border, check our [CSS Gradient Generator](#).



Hey! You found this booklet interesting? Support Converting Colors with the new Membership Option!

The pro membership hides all ads, plus gives you double the colors in the color bucket, and more awesome pro features!

**[Learn more, Memberships starting at \\$2.50/m!](#)**

**Follow me  
on Twitter!**

@ConvertingColor