

# Converting Colors

Hex(EF788E)

Have a look what the booklet for  
Hex(EE788E) contains.

<b>Hex(EE788E)</b> .....	3
<i><b>Conversions</b></i> .....	4
<i><b>Details</b></i> .....	6
<i><b>Harmonies</b></i> .....	11
<i><b>Previews</b></i> .....	23
<i><b>Color Blindness Simulation</b></i> .....	26
<i><b>CSS Examples</b></i> .....	29

# **Color**

**Hex(EE788E)**

# Conversions

## Conversions Part 1

Format	Color
Hex	EE788E
RGB	238, 120, 142
RGB Percent	93%, 47%, 56%
CMY	0.0667, 0.5294, 0.4431
CMYK	0.00, 0.50, 0.40, 0.07
HSL	349°, 78%, 70%
HSV	349°, 50%, 93%
XYZ	46.8589, 33.5631, 29.5998
YIQ	157.7900, 63.2660, 31.8580

# Conversions

## Conversions Part 2

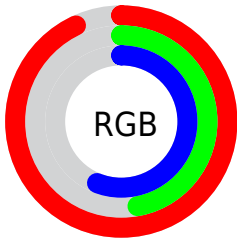
Format	Color
R <sub>Y</sub> B	238, 120, 142
Decimal	15628430
CIE Lab	64.61, 47.52, 9.43
CIE LCh	65, 48.443, 11.224
Yxy	33.5631, 0.4259, 0.3051
Android (android.graphics.Color)	4293818510 (0xFFEE788E)
YUV	157.7900, -7.7845, 70.3442
Hunter-Lab	57.9337, 42.9934, 10.2608

# Details

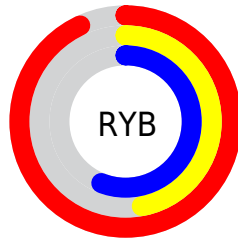
The Hex color **EE788E** is a light color, and the websafe version is hex **FF9999**. A complement of this color would be **78EED8**, and the grayscale version is **9E9E9E**.

A 20% lighter version of the original color is **FFAFC4**, and **B2435C** is the 20% darker color. If you saturate the color by 10%, you get **EE607B**, and if you desaturate by 10%, it is **EE90A1**.

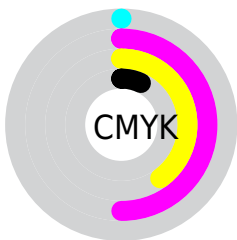
# Distribution



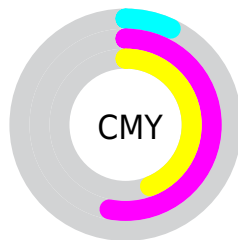
- Red (93%)
- Green (47%)
- Blue (56%)



- Red (93%)
- Yellow (47%)
- Blue (56%)



- Cyan (0%)
- Magenta (50%)
- Yellow (40%)
- Black (7%)



- Cyan (7%)
- Magenta (53%)
- Yellow (44%)

# Brightness & Saturation Gradients

These gradients show how the Hex color EE788E changes by changing the brightness by 10 percent. The first figure shows a shift by +10% for each color and the second figure -10%.

Similar to the brightness gradients but the following saturation gradients show a change of the Hex color EE788E by changing the saturation by 10% instead.



 EE788E

 EE788E

FFFFFF

 D05D75

 FFAFC4

 B2435C

 FFCBDF

 952745

 FFE8FC

 79022F

 5D001A

 420000

 260001

 000000

 EE788E

 EE788E

 EE607B

 EE90A1

 EE4867

 EEA8B5

 EE3154

 EEBFC8

 EE1941

 EED7DB

 EE012D

 EEEFEF

 EE002C

 EEEFFF

# Harmonies

## Analogous

The Analogous color harmony consists of three colors that are next to each other on the color wheel.



DE7CBA



EE788E



E68166

# Triad

The Triadic color harmony groups three colors that are evenly spaced from another and form a triangle on the color wheel.



EE788E



77AA59



00A9EE

# Complementary

The Complementary color scheme is a pair of colors which are on the opposite of each other on the color wheel.



EE788E



78EED8

# Split Complementary

Split-complementary colors differ from the complementary color scheme. The scheme consists of three colors, the original color and two neighbors of the complement color.



00B0D5



EE788E



33B17F

# Square

The Square scheme is like the rectangle color scheme, but the four colors are evenly spaced on the color wheel.



EE788E



A7A044



00B3AC



719CF2

# Rectangle

The Rectangle color scheme consists of four colors that form a rectangle on the color wheel.



EE788E



D78B51



00B3AC



00ACE8



# Sweetspot

The Sweet Spot groups the original color and five complimentary colors.



EE788E



FFD9E0



D678EE



80696D



000000



808080



# Same Dimension

The Same Dimension uses a secret algorithm to generate beautiful new colors.



EE788E



FF6985



EE9B78



786C6E



B80022



38000A



# Inverse Universe

The Inverse Universe completely reimagines the original color for something new.



EE788E



FF6985



78CBEE



786C6E



B80022



38000A



# Previews

## White Background



This preview shows how the Hex color EE788E looks on a white background.

## Color Contrast Check

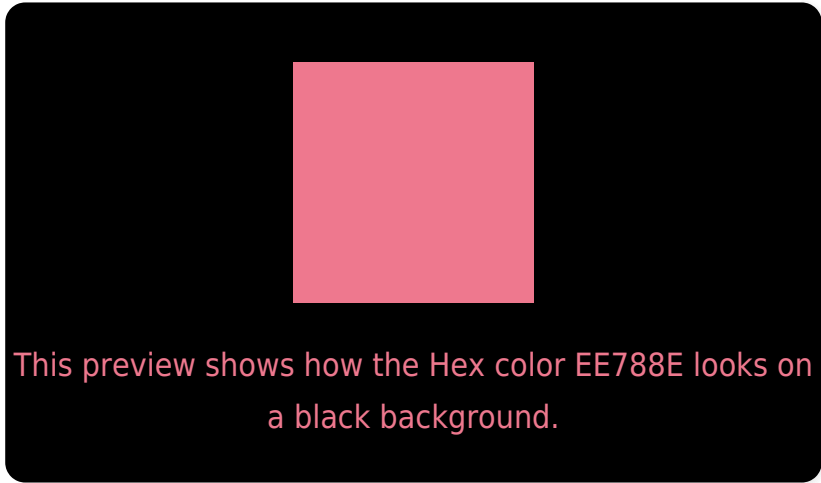
Large Text (above 18pt) WCAG AA × Fail

Any Text WCAG AA × Fail

Large Text (above 18pt) WCAG AAA × Fail

Any Text WCAG AAA × Fail

# Black Background



## Color Contrast Check

Large Text (above 18pt) WCAG AA ✓ Pass

Any Text WCAG AA ✓ Pass

Large Text (above 18pt) WCAG AAA ✓ Pass

Any Text WCAG AAA ✓ Pass

If you want to check with other color combinations, try the [Color Contrast Checker](#).



## Hex EE788E Background



This preview shows how black text looks on a background with the Hex color EE788E.

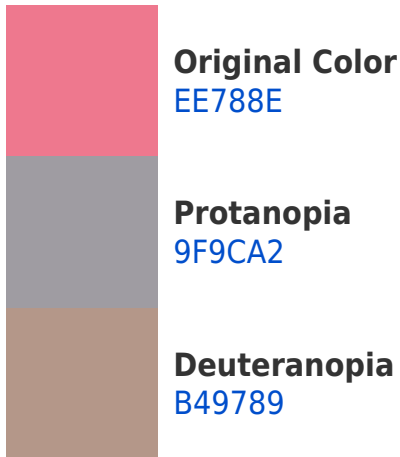



This preview shows how white text looks on a background with the Hex color EE788E.

# Color Blindness Simulation

Color vision deficiency is a very complex topic, and I could not describe the different causes any better than Wikipedia does, so if you want to learn more, you should check out their [article about color blindness](#).

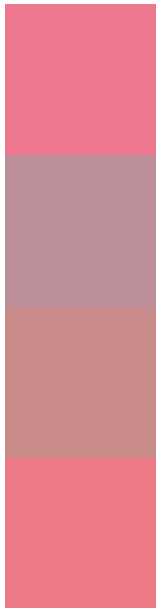
## Dichromacy





**Tritanopia**  
ED7A83

# Trichromacy



**Original Color**  
EE788E

**Protanomaly**  
BC8F9B

**Deuteranomaly**  
C98C8B

**Tritanomaly**  
ED7987

# Monochromacy



**Original Color**  
EE788E

**Achromatopsia**  
9E9E9E

**Achromatomaly**  
BB9098

# CSS Examples

## Text

The CSS property to change the color of the text to Hex EE788E is called "color". The color property can be set on classes, ids or directly on the HTML element.

This example shows how text in the color #EE788E looks like.

```
.text, #text, p{  
    color:#EE788E  
}
```

If you want to add a text shadow in that color use the text-shadow property, you can generate a text shadow directly with our [CSS Text Shadow Generator](#).

Here you see how black text with a 4 pixel #EE788E colored shadow looks like.

```
.shadow{ text-shadow: 4px 4px 2px #EE788E
}
```

## Border

The CSS property to change the border of an element to Hex EE788E is called "border". The border property can be set on classes, ids or directly on the HTML element.

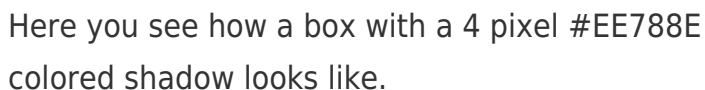
This example shows the color as border, it can be applied via the CSS property "border" or "border-color".

```
.border, #border, table{ border:4px solid
#EE788E }
```

If only the border color should be changed use the property `border-color`.

```
.border{ border-color:#EE788E }
```

If you want to add a box shadow in that color use:



Here you see how a box with a 4 pixel #EE788E colored shadow looks like.

```
.boxshadow{ -moz-box-shadow:4px 4px 4px  
4px #EE788E; -webkit-box-shadow:4px 4px  
4px 4px #EE788E; box-shadow:4px 4px 4px  
4px #EE788E }
```

# Background

The CSS property to change the background color of an element to Hex EE788E is called "background". The background property can be set on classes, ids or directly on the HTML element.

```
.background, #background, body{  
background:#EE788E }
```

If only the background color should be changed can be used:

```
.background{ background-color:#EE788E }
```

This example shows the color as background, it is applied via the CSS property "background".

To optimize and compress your CSS code, you can use our [online CSS compressor and optimizer](#) based on csstidy. If you want to create a linear or radial gradient as background or border, check our [CSS Gradient Generator](#).



Hey! You found this booklet interesting? Support Converting Colors with the new Membership Option!

The pro membership hides all ads, plus gives you double the colors in the color bucket, and more awesome pro features!

**[Learn more, Memberships starting at \\$2.50/m!](#)**

**Follow me  
on Twitter!**

@ConvertingColor