

Converting Colors

Hex(EF7A93)

Have a look what the booklet for
Hex(EE7A93) contains.

| | |
|--|----|
| Hex(EE7A93) | 3 |
| <i>Conversions</i> | 4 |
| <i>Details</i> | 6 |
| <i>Harmonies</i> | 11 |
| <i>Previews</i> | 23 |
| <i>Color Blindness Simulation</i> | 26 |
| <i>CSS Examples</i> | 29 |

Color

Hex(EE7A93)

Conversions

Conversions Part 1

| Format | Color |
|-------------|----------------------------|
| Hex | EE7A93 |
| RGB | 238, 122, 147 |
| RGB Percent | 93%, 48%, 58% |
| CMY | 0.0667, 0.5216, 0.4235 |
| CMYK | 0.00, 0.49, 0.38, 0.07 |
| HSL | 347°, 77%, 71% |
| HSV | 347°, 49%, 93% |
| XYZ | 47.4859, 34.2028, 31.7028 |
| YIQ | 159.5340, 61.1110, 32.3670 |

Conversions

Conversions Part 2

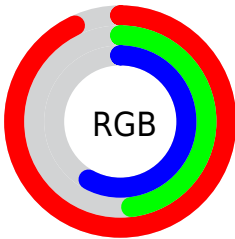
| Format | Color |
|-------------------------------------|-------------------------------|
| R _Y B | 238, 122, 147 |
| Decimal | 15628947 |
| CIE Lab | 65.12, 47.08, 7.31 |
| CIE LCh | 65, 47.640, 8.825 |
| Yxy | 34.2028, 0.4188, 0.3016 |
| Android (android.graphics.Color) | 4293819027 (0xFFEE7A93) |
| YUV | 159.5340, -6.1793, 68.8147 |
| Hunter-Lab | 58.4832, 42.5891, 8.7981 |

Details

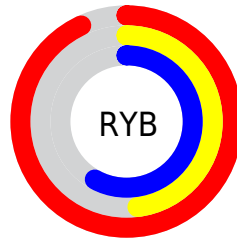
The Hex color **EE7A93** is a light color, and the websafe version is hex **FF9999**. A complement of this color would be **7AEED5**, and the grayscale version is **A0A0A0**.

A 20% lighter version of the original color is **FFB1C9**, and **B34561** is the 20% darker color. If you saturate the color by 10%, you get **EE6280**, and if you desaturate by 10%, it is **EE92A6**.

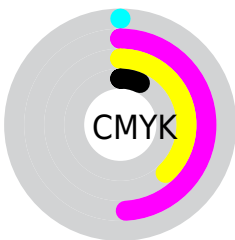
Distribution



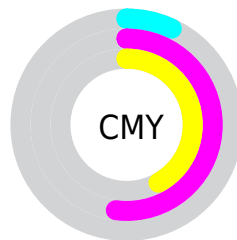
- Red (93%)
- Green (48%)
- Blue (58%)



- Red (93%)
- Yellow (48%)
- Blue (58%)



- Cyan (0%)
- Magenta (49%)
- Yellow (38%)
- Black (7%)



- Cyan (7%)
- Magenta (52%)
- Yellow (42%)

Brightness & Saturation Gradients

These gradients show how the Hex color EE7A93 changes by changing the brightness by 10 percent. The first figure shows a shift by +10% for each color and the second figure -10%.

Similar to the brightness gradients but the following saturation gradients show a change of the Hex color EE7A93 by changing the saturation by 10% instead.

 EE7A93

 EE7A93

FFFFFF

 D05F79

 FFB1C9

 B34561

 FFCDE5

 962949

 FFEAFF

 790633

 5D001E

 430004

 270001

 000000

 EE7A93

 EE7A93

 EE6280

 EE92A6

 EE4A6E

 EEAAB8

 EE335B

 EEC1CB

 EE1B48

 EED9DE

 EE0336

 EEF1F0

 EE0033

 EFFFFFF

Harmonies

Analogous

The Analogous color harmony consists of three colors that are next to each other on the color wheel.



DD7FBE



EE7A93



E8826B

Triad

The Triadic color harmony groups three colors that are evenly spaced from another and form a triangle on the color wheel.



EE7A93



7DAB59



00ABED

Complementary

The Complementary color scheme is a pair of colors which are on the opposite of each other on the color wheel.



EE7A93



7AEED5

Split Complementary

Split-complementary colors differ from the complementary color scheme. The scheme consists of three colors, the original color and two neighbors of the complement color.



00B2D2



EE7A93



3FB27E

Square

The Square scheme is like the rectangle color scheme, but the four colors are evenly spaced on the color wheel.



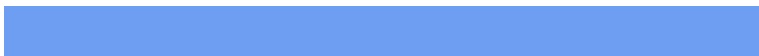
EE7A93



ABA047



00B4AA



6D9EF2

Rectangle

The Rectangle color scheme consists of four colors that form a rectangle on the color wheel.



EE7A93



DA8C56



00B4AA



00AEE6

Sweetspot

The Sweet Spot groups the original color and five complimentary colors.



EE7A93



FFD9E1



D57AEE



80696D



000000



808080

Same Dimension

The Same Dimension uses a secret algorithm to generate beautiful new colors.



EE7A93



FF6B8B



EE9B7A



786C6E



B80028



38000C

Inverse Universe

The Inverse Universe completely reimagines the original color for something new.



EE7A93



FF6B8B



7ACDEE



786C6E



B80028



38000C

Previews

White Background



This preview shows how the Hex color EE7A93 looks on a white background.

Color Contrast Check

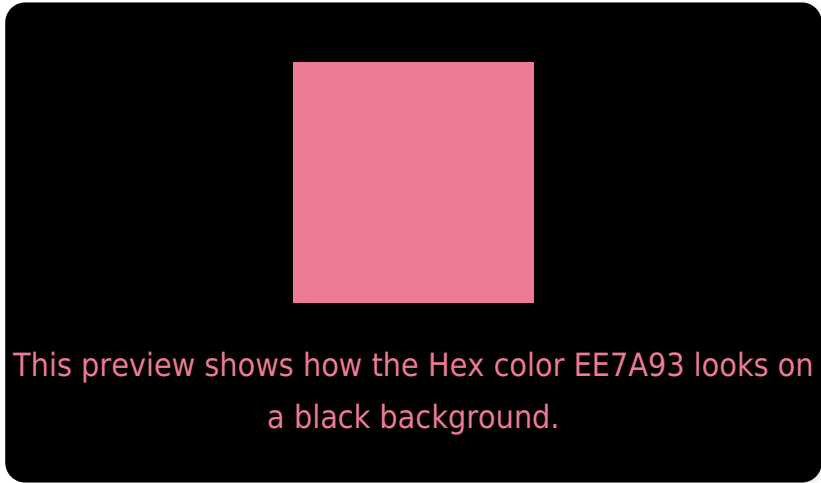
Large Text (above 18pt) WCAG AA × Fail

Any Text WCAG AA × Fail

Large Text (above 18pt) WCAG AAA × Fail

Any Text WCAG AAA × Fail

Black Background



Color Contrast Check

Large Text (above 18pt) WCAG AA ✓ Pass

Any Text WCAG AA ✓ Pass

Large Text (above 18pt) WCAG AAA ✓ Pass

Any Text WCAG AAA ✓ Pass

If you want to check with other color combinations, try the [Color Contrast Checker](#).

Hex EE7A93 Background



This preview shows how black text looks on a background with the Hex color EE7A93.

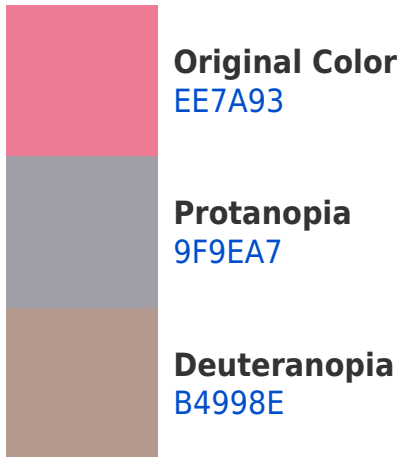


This preview shows how white text looks on a background with the Hex color EE7A93.

Color Blindness Simulation

Color vision deficiency is a very complex topic, and I could not describe the different causes any better than Wikipedia does, so if you want to learn more, you should check out their [article about color blindness](#).

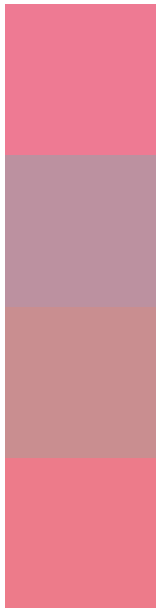
Dichromacy





Tritanopia
ED7C85

Trichromacy



Original Color
EE7A93

Protanomaly
BC91A0

Deuteranomaly
C98E90

Tritanomaly
ED7B8A

Monochromacy



Original Color
EE7A93

Achromatopsia
A0A0A0

Achromatomaly
BC929B

CSS Examples

Text

The CSS property to change the color of the text to Hex EE7A93 is called "color". The color property can be set on classes, ids or directly on the HTML element.

This example shows how text in the color #EE7A93 looks like.

```
.text, #text, p{  
    color:#EE7A93  
}
```

If you want to add a text shadow in that color use the text-shadow property, you can generate a text shadow directly with our [CSS Text Shadow Generator](#).

Here you see how black text with a 4 pixel #EE7A93 colored shadow looks like.

```
.shadow{ text-shadow: 4px 4px 2px #EE7A93
}
```

Border

The CSS property to change the border of an element to Hex EE7A93 is called "border". The border property can be set on classes, ids or directly on the HTML element.

This example shows the color as border, it can be applied via the CSS property "border" or "border-color".

```
.border, #border, table{ border:4px solid
#EE7A93 }
```

If only the border color should be changed use the property `border-color`.

```
.border{ border-color:#EE7A93 }
```

If you want to add a box shadow in that color use:

Here you see how a box with a 4 pixel #EE7A93 colored shadow looks like.

```
.boxshadow{ -moz-box-shadow:4px 4px 4px  
4px #EE7A93; -webkit-box-shadow:4px 4px  
4px 4px #EE7A93; box-shadow:4px 4px 4px  
4px #EE7A93 }
```

Background

The CSS property to change the background color of an element to Hex EE7A93 is called "background". The background property can be set on classes, ids or directly on the HTML element.

```
.background, #background, body{  
background:#EE7A93 }
```

If only the background color should be changed can be used:

```
.background{ background-color:#EE7A93 }
```

This example shows the color as background, it is applied via the CSS property "background".

To optimize and compress your CSS code, you can use our [online CSS compressor and optimizer](#) based on csstidy. If you want to create a linear or radial gradient as background or border, check our [CSS Gradient Generator](#).

Hey! You found this booklet interesting? Support Converting Colors with the new Membership Option!

The pro membership hides all ads, plus gives you double the colors in the color bucket, and more awesome pro features!

[Learn more, Memberships starting at \\$2.50/m!](#)

**Follow me
on Twitter!**

@ConvertingColor