

Converting Colors

Hex(EF8768)

Have a look what the booklet for
Hex(EE8768) contains.

Hex(EE8768)	3
<i>Conversions</i>	4
<i>Details</i>	6
<i>Harmonies</i>	11
<i>Previews</i>	23
<i>Color Blindness Simulation</i>	26
<i>CSS Examples</i>	29

Color

Hex(E E 8 7 6 8)

Conversions

Conversions Part 1

Format	Color
Hex	EE8768
RGB	238, 135, 104
RGB Percent	93%, 53%, 41%
CMY	0.0667, 0.4706, 0.5922
CMYK	0.00, 0.43, 0.56, 0.07
HSL	14°, 80%, 67%
HSV	14°, 56%, 93%
XYZ	46.4226, 36.5046, 17.6961
YIQ	162.2630, 71.3390, 12.1950

Conversions

Conversions Part 2

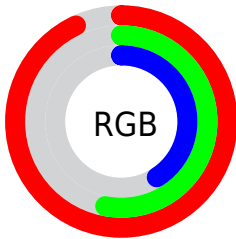
Format	Color
R _Y B	238, 144, 104
Decimal	15632232
CIE Lab	66.90, 36.42, 33.79
CIE LCh	67, 49.682, 42.858
Yxy	36.5046, 0.4614, 0.3628
Android (android.graphics.Color)	4293822312 (0xFFEE8768)
YUV	162.2630, -28.7237, 66.4213
Hunter-Lab	60.4190, 31.4161, 24.9279

Details

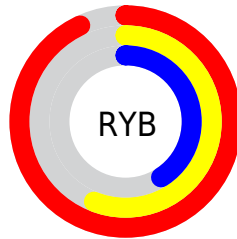
The Hex color **EE8768** is a light color, and the websafe version is hex **FF9966**. A complement of this color would be **68CFEE**, and the grayscale version is **A2A2A2**.

A 20% lighter version of the original color is **FFBD9C**, and **B25338** is the 20% darker color. If you saturate the color by 10%, you get **EE7550**, and if you desaturate by 10%, it is **EE9980**.

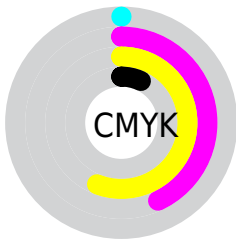
Distribution



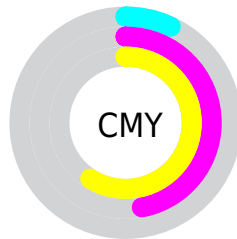
- Red (93%)
- Green (53%)
- Blue (41%)



- Red (93%)
- Yellow (56%)
- Blue (41%)



- Cyan (0%)
- Magenta (43%)
- Yellow (56%)
- Black (7%)



- Cyan (7%)
- Magenta (47%)
- Yellow (59%)

Brightness & Saturation Gradients

These gradients show how the Hex color EE8768 changes by changing the brightness by 10 percent. The first figure shows a shift by +10% for each color and the second figure -10%.

Similar to the brightness gradients but the following saturation gradients show a change of the Hex color EE8768 by changing the saturation by 10% instead.

 EE8768

 EE8768

FFFFFF

 D06D50

 FFBD9C

 B25338

 FFDAB7

 943A22

 FFF7D2

 77210C

 FFFFEF

 5B0400

 3F0000

 250001

 000000

 EE8768

 EE8768

 EE7550

 EE9980

 EE6238

 EEAC98

 EE5021

 EEBEAF

 EE3E09

 EED0C7

 EE3700

 EEE2DF

 EEF5F7

 EEFFFF

Harmonies

Analogous

The Analogous color harmony consists of three colors that are next to each other on the color wheel.



F77D91



EE8768



D3974C

Triad

The Triadic color harmony groups three colors that are evenly spaced from another and form a triangle on the color wheel.



EE8768



2FB887



7AA1FA

Complementary

The Complementary color scheme is a pair of colors which are on the opposite of each other on the color wheel.



EE8768



68CFEE

Split Complementary

Split-complementary colors differ from the complementary color scheme. The scheme consists of three colors, the original color and two neighbors of the complement color.



00AFF8



EE8768



00BAB5

Square

The Square scheme is like the rectangle color scheme, but the four colors are evenly spaced on the color wheel.



EE8768



79B15F



00B7DE



BF8FE5

Rectangle

The Rectangle color scheme consists of four colors that form a rectangle on the color wheel.



EE8768



B9A246



00B7DE



5AA6FC

Sweetspot

The Sweet Spot groups the original color and five complimentary colors.



EE8768



FFDED4



EE68D1



806C66



000000



808080

Same Dimension

The Same Dimension uses a secret algorithm to generate beautiful new colors.



EE8768



FF7A52



EEC868



786F6C



B82A00



380D00

Inverse Universe

The Inverse Universe completely reimagines the original color for something new.



68CFEE



52D7FF



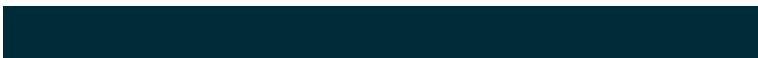
688EEE



6C7578



008DB8



002B38

Previews

White Background



This preview shows how the Hex color EE8768 looks on a white background.

Color Contrast Check

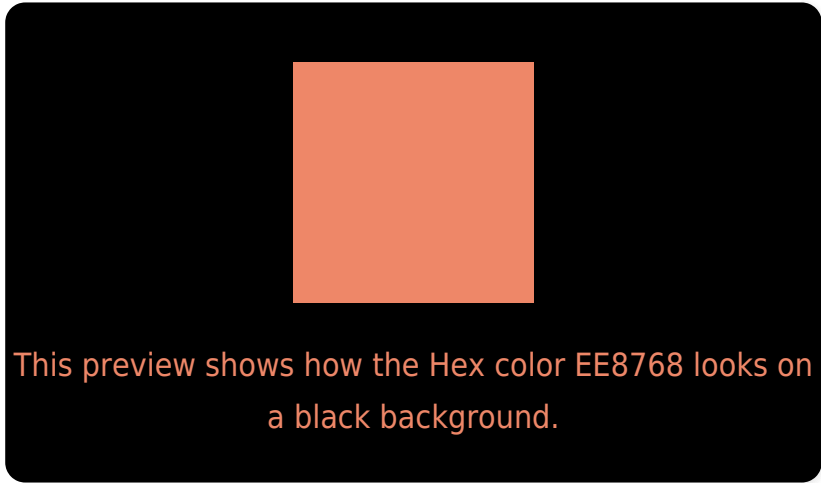
Large Text (above 18pt) WCAG AA × Fail

Any Text WCAG AA × Fail

Large Text (above 18pt) WCAG AAA × Fail

Any Text WCAG AAA × Fail

Black Background



Color Contrast Check

Large Text (above 18pt) WCAG AA ✓ Pass

Any Text WCAG AA ✓ Pass

Large Text (above 18pt) WCAG AAA ✓ Pass

Any Text WCAG AAA ✓ Pass

If you want to check with other color combinations, try the [Color Contrast Checker](#).

Hex EE8768 Background



This preview shows how black text looks on a background with the Hex color EE8768.

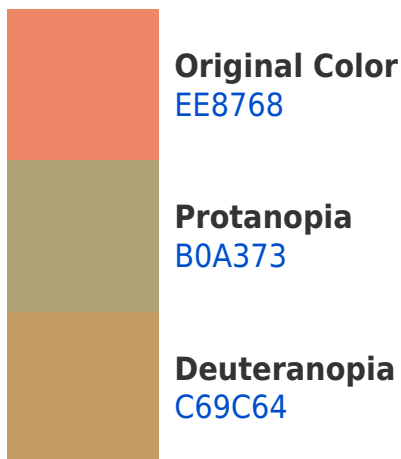


This preview shows how white text looks on a background with the Hex color EE8768.

Color Blindness Simulation

Color vision deficiency is a very complex topic, and I could not describe the different causes any better than Wikipedia does, so if you want to learn more, you should check out their [article about color blindness](#).

Dichromacy





Tritanopia
F0828C

Trichromacy



Original Color
EE8768



Protanomaly
C7996F



Deuteranomaly
D59465



Tritanomaly
EF847F

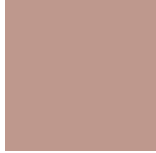
Monochromacy



Original Color
EE8768



Achromatopsia
A2A2A2



Achromatomaly
BE988D

CSS Examples

Text

The CSS property to change the color of the text to Hex EE8768 is called "color". The color property can be set on classes, ids or directly on the HTML element.

This example shows how text in the color #EE8768 looks like.

```
.text, #text, p{  
    color:#EE8768  
}
```

If you want to add a text shadow in that color use the text-shadow property, you can generate a text shadow directly with our [CSS Text Shadow Generator](#).

Here you see how black text with a 4 pixel #EE8768 colored shadow looks like.

```
.shadow{ text-shadow: 4px 4px 2px #EE8768
}
```

Border

The CSS property to change the border of an element to Hex EE8768 is called "border". The border property can be set on classes, ids or directly on the HTML element.

This example shows the color as border, it can be applied via the CSS property "border" or "border-color".

```
.border, #border, table{ border:4px solid
#EE8768 }
```

If only the border color should be changed use the property `border-color`.

```
.border{ border-color:#EE8768 }
```

If you want to add a box shadow in that color use:

Here you see how a box with a 4 pixel #EE8768 colored shadow looks like.

```
.boxshadow{ -moz-box-shadow:4px 4px 4px  
4px #EE8768; -webkit-box-shadow:4px 4px  
4px 4px #EE8768; box-shadow:4px 4px 4px  
4px #EE8768 }
```

Background

The CSS property to change the background color of an element to Hex EE8768 is called "background". The background property can be set on classes, ids or directly on the HTML element.

```
.background, #background, body{  
background:#EE8768 }
```

If only the background color should be changed can be used:

```
.background{ background-color:#EE8768 }
```

This example shows the color as background, it is applied via the CSS property "background".

To optimize and compress your CSS code, you can use our [online CSS compressor and optimizer](#) based on csstidy. If you want to create a linear or radial gradient as background or border, check our [CSS Gradient Generator](#).

Hey! You found this booklet interesting? Support Converting Colors with the new Membership Option!

The pro membership hides all ads, plus gives you double the colors in the color bucket, and more awesome pro features!

[Learn more, Memberships starting at \\$2.50/m!](#)

**Follow me
on Twitter!**

@ConvertingColor