

Converting Colors

Hex(EE945F)

Have a look what the booklet for
Hex(EE945F) contains.

Hex(EE945F)	3
<i>Conversions</i>	4
<i>Details</i>	6
<i>Harmonies</i>	11
<i>Previews</i>	23
<i>Color Blindness Simulation</i>	26
<i>CSS Examples</i>	29

Color

Hex(EE945F)

Conversions

Conversions Part 1

Format	Color
Hex	EE945F
RGB	238, 148, 95
RGB Percent	93%, 58%, 37%
CMY	0.0667, 0.4196, 0.6275
CMYK	0.00, 0.38, 0.60, 0.07
HSL	22°, 81%, 65%
HSV	22°, 60%, 93%
XYZ	47.9154, 40.1832, 16.0572
YIQ	168.8680, 70.6530, 2.5970

Conversions

Conversions Part 2

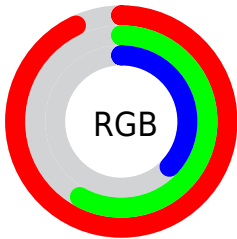
Format	Color
R _Y B	238, 179, 95
Decimal	15635551
CIE Lab	69.60, 28.97, 41.92
CIE LCh	70, 50.959, 55.350
Yxy	40.1832, 0.4600, 0.3858
Android (android.graphics.Color)	4293825631 (0xFFEE945F)
YUV	168.8680, -36.4169, 60.6288
Hunter-Lab	63.3902, 23.9917, 29.3546

Details

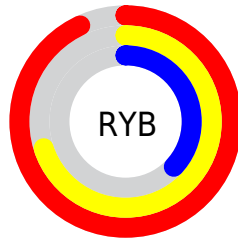
The Hex color **EE945F** is a light color, and the websafe version is hex **FF9966**. The color can be described as light muted orange. A complement of this color would be **5FB9EE**, and the grayscale version is **A9A9A9**.

A 20% lighter version of the original color is **FFCB93**, and **B2602E** is the 20% darker color. If you saturate the color by 10%, you get **EE8547**, and if you desaturate by 10%, it is **EEA377**.

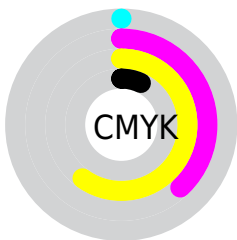
Distribution



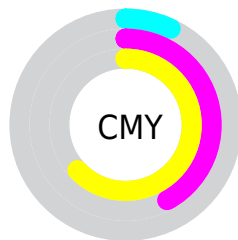
- Red (93%)
- Green (58%)
- Blue (37%)



- Red (93%)
- Yellow (70%)
- Blue (37%)



- Cyan (0%)
- Magenta (38%)
- Yellow (60%)
- Black (7%)



- Cyan (7%)
- Magenta (42%)
- Yellow (63%)

Brightness & Saturation Gradients

These gradients show how the Hex color EE945F changes by changing the brightness by 10 percent. The first figure shows a shift by +10% for each color and the second figure -10%.

Similar to the brightness gradients but the following saturation gradients show a change of the Hex color EE945F by changing the saturation by 10% instead.

 EE945F

 EE945F

FFFFFF

 D07A46

 FFCB93

 B2602E

 FFE7AE

 944817

 FFFFC9

 773000

 FFFFEE

 5B1900

 3F0100

 280001

 000000

 EE945F

 EE945F

 EE8547

 EEA377

 EE762F

 EEB28F

 EE6718

 EEC1A6

 EE5800

 EED0BE

 EEDFD6

 EEEEE

 EEFDF

 EFFFF

Harmonies

Analogous

The Analogous color harmony consists of three colors that are next to each other on the color wheel.



FF8685



EE945F



CBA54B

Triad

The Triadic color harmony groups three colors that are evenly spaced from another and form a triangle on the color wheel.



EE945F



00C1A1



A2A1FE

Complementary

The Complementary color scheme is a pair of colors which are on the opposite of each other on the color wheel.



EE945F



5FB9EE

Split Complementary

Split-complementary colors differ from the complementary color scheme. The scheme consists of three colors, the original color and two neighbors of the complement color.



3FB1FF



EE945F



00C1D0

Square

The Square scheme is like the rectangle color scheme, but the four colors are evenly spaced on the color wheel.



EE945F



65BC73



00BCF5



DC8FDF

Rectangle

The Rectangle color scheme consists of four colors that form a rectangle on the color wheel.



EE945F



AEAF4D



00BCF5



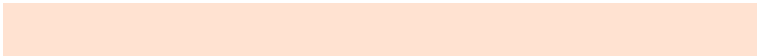
87A7FF

Sweetspot

The Sweet Spot groups the original color and five complimentary colors.



EE945F



FFE2D1



EE5FBA



806E63



000000



808080

Same Dimension

The Same Dimension uses a secret algorithm to generate beautiful new colors.



EE945F



FF8B47



EEDB5F



78706C



B84400



381500

Inverse Universe

The Inverse Universe completely reimagines the original color for something new.



5FB9EE



47BBFF



5F72EE



6C7378



0074B8



002338

Previews

White Background



This preview shows how the Hex color EE945F looks on a white background.

Color Contrast Check

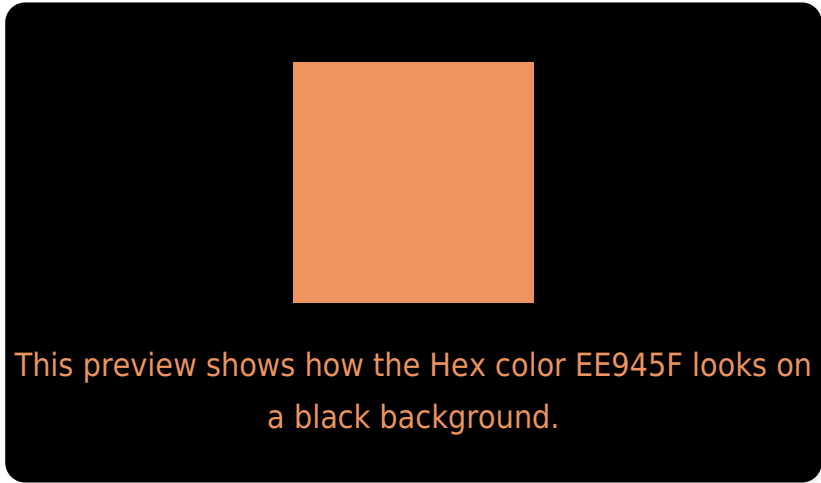
Large Text (above 18pt) WCAG AA × Fail

Any Text WCAG AA × Fail

Large Text (above 18pt) WCAG AAA × Fail

Any Text WCAG AAA × Fail

Black Background



Color Contrast Check

Large Text (above 18pt) WCAG AA ✓ Pass

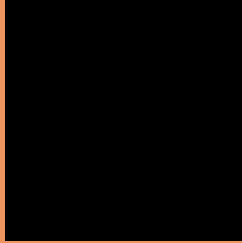
Any Text WCAG AA ✓ Pass

Large Text (above 18pt) WCAG AAA ✓ Pass

Any Text WCAG AAA ✓ Pass

If you want to check with other color combinations, try the [Color Contrast Checker](#).

Hex EE945F Background



This preview shows how black text looks on a background with the Hex color EE945F.

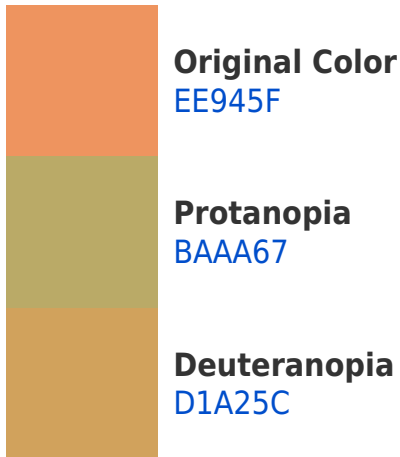


This preview shows how white text looks on a background with the Hex color EE945F.

Color Blindness Simulation

Color vision deficiency is a very complex topic, and I could not describe the different causes any better than Wikipedia does, so if you want to learn more, you should check out their [article about color blindness](#).

Dichromacy





Tritanopia
F28D97

Trichromacy



Original Color
EE945F



Protanomaly
CDA264



Deuteranomaly
DC9D5D



Tritanomaly
F19083

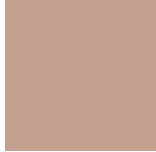
Monochromacy



Original Color
EE945F



Achromatopsia
A9A9A9



Achromatomaly
C2A18E

CSS Examples

Text

The CSS property to change the color of the text to Hex EE945F is called "color". The color property can be set on classes, ids or directly on the HTML element.

This example shows how text in the color #EE945F looks like.

```
.text, #text, p{  
    color:#EE945F  
}
```

If you want to add a text shadow in that color use the text-shadow property, you can generate a text shadow directly with our [CSS Text Shadow Generator](#).

Here you see how black text with a 4 pixel #EE945F colored shadow looks like.

```
.shadow{ text-shadow: 4px 4px 2px #EE945F
}
```

Border

The CSS property to change the border of an element to Hex EE945F is called "border". The border property can be set on classes, ids or directly on the HTML element.

This example shows the color as border, it can be applied via the CSS property "border" or "border-color".

```
.border, #border, table{ border:4px solid
#EE945F }
```

If only the border color should be changed use the property `border-color`.

```
.border{ border-color:#EE945F }
```

If you want to add a box shadow in that color use:

Here you see how a box with a 4 pixel #EE945F colored shadow looks like.

```
.boxshadow{ -moz-box-shadow:4px 4px 4px  
4px #EE945F; -webkit-box-shadow:4px 4px  
4px 4px #EE945F; box-shadow:4px 4px 4px  
4px #EE945F }
```

Background

The CSS property to change the background color of an element to Hex EE945F is called "background". The background property can be set on classes, ids or directly on the HTML element.

```
.background, #background, body{  
background:#EE945F }
```

If only the background color should be changed can be used:

```
.background{ background-color:#EE945F }
```

This example shows the color as background, it is applied via the CSS property "background".

To optimize and compress your CSS code, you can use our [online CSS compressor and optimizer](#) based on csstidy. If you want to create a linear or radial gradient as background or border, check our [CSS Gradient Generator](#).

Hey! You found this booklet interesting? Support Converting Colors with the new Membership Option!

The pro membership hides all ads, plus gives you double the colors in the color bucket, and more awesome pro features!

[Learn more, Memberships starting at \\$2.50/m!](#)

**Follow me
on Twitter!**

@ConvertingColor