

Converting Colors

Hex(EE9970)

Have a look what the booklet for
Hex(EE9970) contains.

Hex(EE9970)	3
<i>Conversions</i>	4
<i>Details</i>	6
<i>Harmonies</i>	11
<i>Previews</i>	23
<i>Color Blindness Simulation</i>	26
<i>CSS Examples</i>	29

Color

Hex(EE9970)

Conversions

Conversions Part 1

Format	Color
Hex	EE9970
RGB	238, 153, 112
RGB Percent	93%, 60%, 44%
CMY	0.0667, 0.4000, 0.5608
CMYK	0.00, 0.36, 0.53, 0.07
HSL	20°, 79%, 69%
HSV	20°, 53%, 93%
XYZ	49.5758, 42.1295, 20.8481
YIQ	173.7410, 63.8210, 5.2690

Conversions

Conversions Part 2

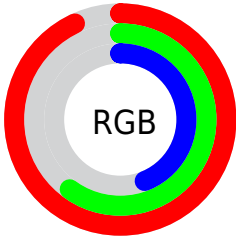
Format	Color
R_{YB}	238, 173, 112
Decimal	15636848
CIE _{Lab}	70.96, 27.65, 34.66
CIE _{LCh}	71, 44.338, 51.412
Yxy	42.1295, 0.4405, 0.3743
Android (android.graphics.Color)	4293826928 (0xFFEE9970)
YUV	173.7410, -30.4383, 56.3551
Hunter-Lab	64.9072, 22.7497, 26.3912

Details

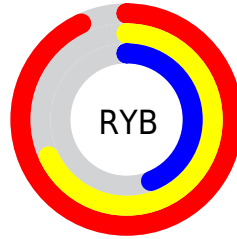
The Hex color **EE9970** is a light color, and the websafe version is hex **FF9966**. A complement of this color would be **70C5EE**, and the grayscale version is **AEAFAE**.

A 20% lighter version of the original color is **FFD0A4**, and **B3653F** is the 20% darker color. If you saturate the color by 10%, you get **EE8958**, and if you desaturate by 10%, it is **EEA988**.

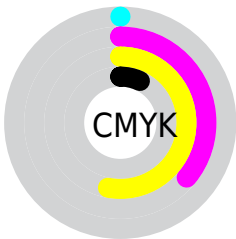
Distribution



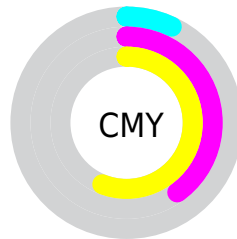
- Red (93%)
- Green (60%)
- Blue (44%)



- Red (93%)
- Yellow (68%)
- Blue (44%)



- Cyan (0%)
- Magenta (36%)
- Yellow (53%)
- Black (7%)



- Cyan (7%)
- Magenta (40%)
- Yellow (56%)

Brightness & Saturation Gradients

These gradients show how the Hex color EE9970 changes by changing the brightness by 10 percent. The first figure shows a shift by +10% for each color and the second figure -10%.

Similar to the brightness gradients but the following saturation gradients show a change of the Hex color EE9970 by changing the saturation by 10% instead.

 EE9970

 EE9970

FFFFFF

 D07F57

 FFD0A4

 B3653F

 FFECC0

 964D28

 FFFFDC

 793512

 FFFFF8

 5E1D00

 420500

 2A0001

 000000

 EE9970

 EE9970

 EE8958

 EEA988

 EE7940

 EEB9A0

 EE6929

 EEC9B7

 EE5911

 EED9CF

 EE4D00

 EEE9E7

 EEF9FF

 EEEFFF

Harmonies

Analogous

The Analogous color harmony consists of three colors that are next to each other on the color wheel.



FB8F92



EE9970



D1A75D

Triad

The Triadic color harmony groups three colors that are evenly spaced from another and form a triangle on the color wheel.



EE9970



3DC2A0



A0A8F9

Complementary

The Complementary color scheme is a pair of colors which are on the opposite of each other on the color wheel.



EE9970



70C5EE

Split Complementary

Split-complementary colors differ from the complementary color scheme. The scheme consists of three colors, the original color and two neighbors of the complement color.



54B5FD



EE9970



00C3CA

Square

The Square scheme is like the rectangle color scheme, but the four colors are evenly spaced on the color wheel.



EE9970



7BBD7A



00BEEC



D598E0

Rectangle

The Rectangle color scheme consists of four colors that form a rectangle on the color wheel.



EE9970



B8B05D



00BEEC



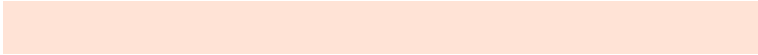
8AADFD

Sweetspot

The Sweet Spot groups the original color and five complimentary colors.



EE9970



FFE3D6



EE70C6



806F67



000000



808080

Same Dimension

The Same Dimension uses a secret algorithm to generate beautiful new colors.



EE9970



FF915C



EED770



78706C



B83C00



381200

Inverse Universe

The Inverse Universe completely reimagines the original color for something new.



70C5EE



5CCAFF



7087EE



6C7478



007CB8



002638

Previews

White Background



This preview shows how the Hex color EE9970 looks on a white background.

Color Contrast Check

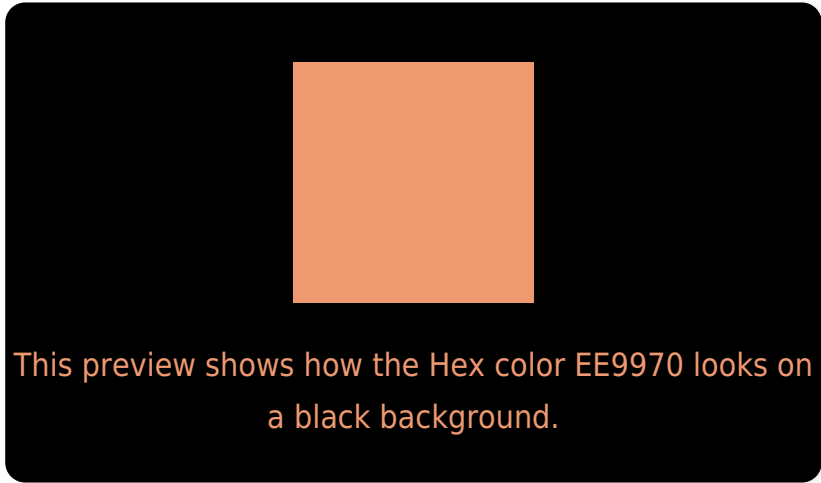
Large Text (above 18pt) WCAG AA × Fail

Any Text WCAG AA × Fail

Large Text (above 18pt) WCAG AAA × Fail

Any Text WCAG AAA × Fail

Black Background



Color Contrast Check

Large Text (above 18pt) WCAG AA ✓ Pass

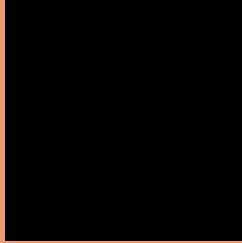
Any Text WCAG AA ✓ Pass

Large Text (above 18pt) WCAG AAA ✓ Pass

Any Text WCAG AAA ✓ Pass

If you want to check with other color combinations, try the [Color Contrast Checker](#).

Hex EE9970 Background



This preview shows how black text looks on a background with the Hex color EE9970.

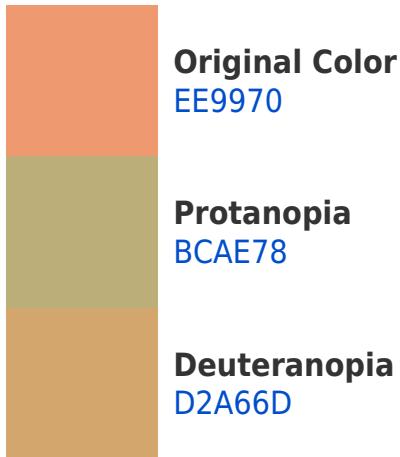


This preview shows how white text looks on a background with the Hex color EE9970.

Color Blindness Simulation

Color vision deficiency is a very complex topic, and I could not describe the different causes any better than Wikipedia does, so if you want to learn more, you should check out their [article about color blindness](#).

Dichromacy



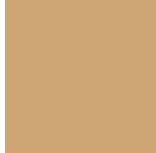


Tritanopia
F2939E

Trichromacy



Original Color
EE9970



Protanomaly
CEA675



Deuteranomaly
DCA16E

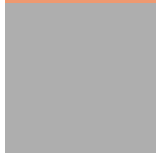


Tritanomaly
F1958D

Monochromacy



Original Color
EE9970



Achromatopsia
AEAEAE



Achromatomaly
C5A697

CSS Examples

Text

The CSS property to change the color of the text to Hex EE9970 is called "color". The color property can be set on classes, ids or directly on the HTML element.

This example shows how text in the color #EE9970 looks like.

```
.text, #text, p{  
    color:#EE9970  
}
```

If you want to add a text shadow in that color use the text-shadow property, you can generate a text shadow directly with our [CSS Text Shadow Generator](#).

Here you see how black text with a 4 pixel #EE9970 colored shadow looks like.

```
.shadow{ text-shadow: 4px 4px 2px #EE9970
}
```

Border

The CSS property to change the border of an element to Hex EE9970 is called "border". The border property can be set on classes, ids or directly on the HTML element.

This example shows the color as border, it can be applied via the CSS property "border" or "border-color".

```
.border, #border, table{ border:4px solid
#EE9970 }
```

If only the border color should be changed use the property `border-color`.

```
.border{ border-color:#EE9970 }
```

If you want to add a box shadow in that color use:

Here you see how a box with a 4 pixel #EE9970 colored shadow looks like.

```
.boxshadow{ -moz-box-shadow:4px 4px 4px  
4px #EE9970; -webkit-box-shadow:4px 4px  
4px 4px #EE9970; box-shadow:4px 4px 4px  
4px #EE9970 }
```

Background

The CSS property to change the background color of an element to Hex EE9970 is called "background". The background property can be set on classes, ids or directly on the HTML element.

```
.background, #background, body{  
background:#EE9970 }
```

If only the background color should be changed can be used:

```
.background{ background-color:#EE9970 }
```

This example shows the color as background, it is applied via the CSS property "background".

To optimize and compress your CSS code, you can use our [online CSS compressor and optimizer](#) based on csstidy. If you want to create a linear or radial gradient as background or border, check our [CSS Gradient Generator](#).

Hey! You found this booklet interesting? Support Converting Colors with the new Membership Option!

The pro membership hides all ads, plus gives you double the colors in the color bucket, and more awesome pro features!

[Learn more, Memberships starting at \\$2.50/m!](#)

**Follow me
on Twitter!**

@ConvertingColor