

Converting Colors

Hex(EEBFD5)

Have a look what the booklet for
Hex(EEBFD5) contains.

Hex(EEBFD5)	3
<i>Conversions</i>	4
<i>Details</i>	6
<i>Harmonies</i>	11
<i>Previews</i>	23
<i>Color Blindness Simulation</i>	26
<i>CSS Examples</i>	29

Color

Hex(EEBFD5)

Conversions

Conversions Part 1

Format	Color
Hex	EEBFD5
RGB	238, 191, 213
RGB Percent	93%, 75%, 84%
CMY	0.0667, 0.2510, 0.1647
CMYK	0.00, 0.20, 0.11, 0.07
HSL	332°, 58%, 84%
HSV	332°, 20%, 93%
XYZ	65.9009, 60.2428, 71.1055
YIQ	207.5610, 20.9500, 16.8060

Conversions

Conversions Part 2

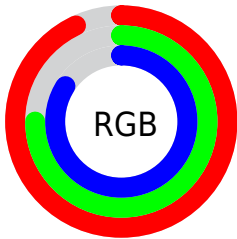
Format	Color
R _Y B	238, 191, 213
Decimal	15646677
CIE Lab	81.97, 20.26, -4.60
CIE LCh	82, 20.774, 347.195
Yxy	60.2428, 0.3341, 0.3054
Android (android.graphics.Color)	4293836757 (0xFFEEBFD5)
YUV	207.5610, 2.6814, 26.6950
Hunter-Lab	77.6163, 15.7289, 0.0149

Details

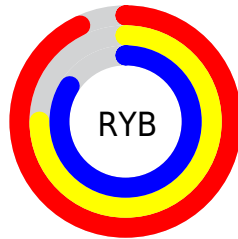
The Hex color **EED7E2** is a light color, and the websafe version is hex **FFCCCC**. A complement of this color would be **BFEED8**, and the grayscale version is **D0D0D0**.

A 20% lighter version of the original color is **FFF8FF**, and **B6899E** is the 20% darker color. If you saturate the color by 10%, you get **EEA7C8**, and if you desaturate by 10%, it is **EED7E2**.

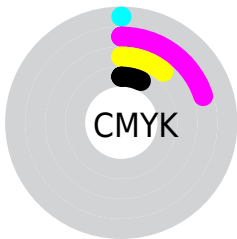
Distribution



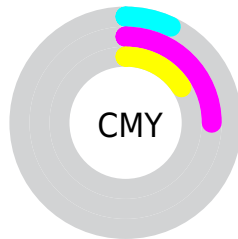
- Red (93%)
- Green (75%)
- Blue (84%)



- Red (93%)
- Yellow (75%)
- Blue (84%)



- Cyan (0%)
- Magenta (20%)
- Yellow (11%)
- Black (7%)



- Cyan (7%)
- Magenta (25%)
- Yellow (16%)

Brightness & Saturation Gradients

These gradients show how the Hex color EEBFD5 changes by changing the brightness by 10 percent. The first figure shows a shift by +10% for each color and the second figure -10%.

Similar to the brightness gradients but the following saturation gradients show a change of the Hex color EEBFD5 by changing the saturation by 10% instead.

 EEBFD5

FFFFFF

 FFF8FF

 EEBFD5

 D1A4B9

 B6899E

 9A7084

 80576B

 673F53

 4E293C

 361326

 230012

 000000

 EEBFD5

 EEBFD5

 EEA7C8

 EED7E2

 EE8FBC

 EEEFEE

 EE78AF

 EEEFFB

 EE60A2

 EEEFFF

 EE4896

 EE3089

 EE187C

 EE0170

 EE006F

Harmonies

Analogous

The Analogous color harmony consists of three colors that are next to each other on the color wheel.



DDC3E6



EEBFD5



F5BEC1

Triad

The Triadic color harmony groups three colors that are evenly spaced from another and form a triangle on the color wheel.



EEBFD5



CFCEA7



9BD5E8

Complementary

The Complementary color scheme is a pair of colors which are on the opposite of each other on the color wheel.



EEBFD5



BFEED8

Split Complementary

Split-complementary colors differ from the complementary color scheme. The scheme consists of three colors, the original color and two neighbors of the complement color.



98D7D7



EEBFD5



B9D3B1

Square

The Square scheme is like the rectangle color scheme, but the four colors are evenly spaced on the color wheel.



EEBFD5



E3C8A6



A5D7C3



ACD0F1

Rectangle

The Rectangle color scheme consists of four colors that form a rectangle on the color wheel.



EEBFD5



F3C0B5



A5D7C3



98D6E3

Sweetspot

The Sweet Spot groups the original color and five complimentary colors.



EEBFD5



FFF0F7



D7BFEE



80777B



000000



808080

Same Dimension

The Same Dimension uses a secret algorithm to generate beautiful new colors.



EEBFD5



FFC2DE



EEC0BF



786C71



B80056



38001A

Inverse Universe

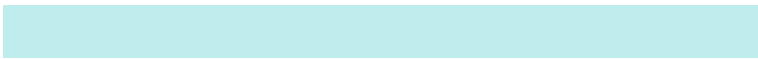
The Inverse Universe completely reimagines the original color for something new.



EEBFD5



FFC2DE



BFEEDE



786C71



B80056



38001A

Previews

White Background



This preview shows how the Hex color EEBFD5 looks on a white background.

Color Contrast Check

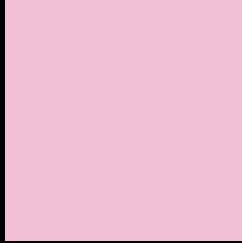
Large Text (above 18pt) WCAG AA × Fail

Any Text WCAG AA × Fail

Large Text (above 18pt) WCAG AAA × Fail

Any Text WCAG AAA × Fail

Black Background



This preview shows how the Hex color EEBFD5 looks on a black background.

Color Contrast Check

Large Text (above 18pt) WCAG AA ✓ Pass

Any Text WCAG AA ✓ Pass

Large Text (above 18pt) WCAG AAA ✓ Pass

Any Text WCAG AAA ✓ Pass

If you want to check with other color combinations, try the [Color Contrast Checker](#).

Hex EEBFD5 Background



This preview shows how black text looks on a background with the Hex color EEBFD5.



This preview shows how white text looks on a background with the Hex color EEBFD5.

Color Blindness Simulation

Color vision deficiency is a very complex topic, and I could not describe the different causes any better than Wikipedia does, so if you want to learn more, you should check out their [article about color blindness](#).

Dichromacy



Original Color
EEBFD5

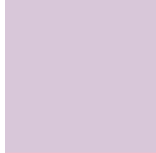
Protanopia
CBCBDC

Deuteranopia
DCC6D4

Trichromacy



Original Color
EEBFD5



Protanomaly
D8C7D9



Deuteranomaly
E3C3D4

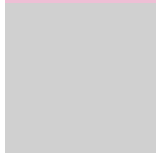


Tritanomaly
EDC0D1

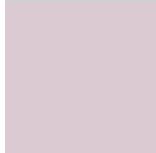
Monochromacy



Original Color
EEBFD5



Achromatopsia
D0D0D0



Achromatomaly
DBCAD2

CSS Examples

Text

The CSS property to change the color of the text to Hex EEBFD5 is called "color". The color property can be set on classes, ids or directly on the HTML element.

This example shows how text in the color #EEBFD5 looks like.

```
.text, #text, p{  
    color:#EEBFD5  
}
```

If you want to add a text shadow in that color use the text-shadow property, you can generate a text shadow directly with our [CSS Text Shadow Generator](#).

Here you see how black text with a 4 pixel #EEBFD5 colored shadow looks like.

```
.shadow{ text-shadow: 4px 4px 2px #EEBFD5
}
```

Border

The CSS property to change the border of an element to Hex EEBFD5 is called "border". The border property can be set on classes, ids or directly on the HTML element.

This example shows the color as border, it can be applied via the CSS property "border" or "border-color".

```
.border, #border, table{ border:4px solid
#EEBFD5 }
```

If only the border color should be changed use the property `border-color`.

```
.border{ border-color:#EEBFD5 }
```

If you want to add a box shadow in that color use:

Here you see how a box with a 4 pixel #EEBFD5 colored shadow looks like.

```
.boxshadow{ -moz-box-shadow:4px 4px 4px  
4px #EEBFD5; -webkit-box-shadow:4px 4px  
4px 4px #EEBFD5; box-shadow:4px 4px 4px  
4px #EEBFD5 }
```

Background

The CSS property to change the background color of an element to Hex EEBFD5 is called "background". The background property can be set on classes, ids or directly on the HTML element.

```
.background, #background, body{  
background:#EEBFD5 }
```

If only the background color should be changed can be used:

```
.background{ background-color:#EEBFD5 }
```

This example shows the color as background, it is applied via the CSS property "background".

To optimize and compress your CSS code, you can use our [online CSS compressor and optimizer](#) based on csstidy. If you want to create a linear or radial gradient as background or border, check our [CSS Gradient Generator](#).

Hey! You found this booklet interesting? Support Converting Colors with the new Membership Option!

The pro membership hides all ads, plus gives you double the colors in the color bucket, and more awesome pro features!

[Learn more, Memberships starting at \\$2.50/m!](#)

**Follow me
on Twitter!**

@ConvertingColor