

Converting Colors

Hex(EEC1D8)

Have a look what the booklet for
Hex(EEC1D8) contains.

Hex(EEC1D8)	3
<i>Conversions</i>	4
<i>Details</i>	6
<i>Harmonies</i>	11
<i>Previews</i>	23
<i>Color Blindness Simulation</i>	26
<i>CSS Examples</i>	29

Color

Hex(EEC1D8)

Conversions

Conversions Part 1

Format	Color
Hex	EEC1D8
RGB	238, 193, 216
RGB Percent	93%, 76%, 85%
CMY	0.0667, 0.2431, 0.1529
CMYK	0.00, 0.19, 0.09, 0.07
HSL	329°, 57%, 85%
HSV	329°, 19%, 93%
XYZ	66.7245, 61.2749, 73.2762
YIQ	209.0770, 19.4370, 16.6930

Conversions

Conversions Part 2

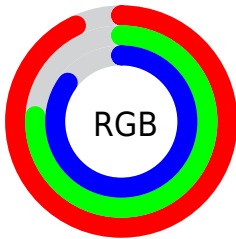
Format	Color
R _Y B	238, 193, 216
Decimal	15647192
CIE Lab	82.53, 19.70, -5.39
CIE LCh	83, 20.420, 344.687
Yxy	61.2749, 0.3315, 0.3044
Android (android.graphics.Color)	4293837272 (0xFFEEC1D8)
YUV	209.0770, 3.4130, 25.3655
Hunter-Lab	78.2783, 15.1666, -0.7065

Details

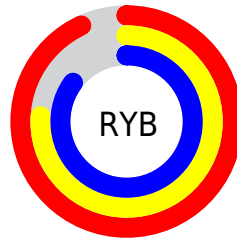
The Hex color **EEC1D8** is a light color, and the websafe version is hex **FFCCCC**. A complement of this color would be **C1EED7**, and the grayscale version is **D1D1D1**.

A 20% lighter version of the original color is **FFFAFF**, and **B68BA1** is the 20% darker color. If you saturate the color by 10%, you get **EEA9CC**, and if you desaturate by 10%, it is **EED9E4**.

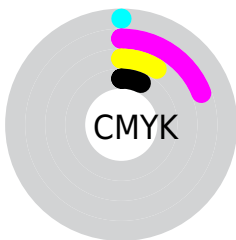
Distribution



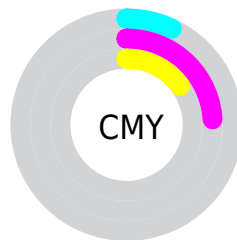
- Red (93%)
- Green (76%)
- Blue (85%)



- Red (93%)
- Yellow (76%)
- Blue (85%)



- Cyan (0%)
- Magenta (19%)
- Yellow (9%)
- Black (7%)



- Cyan (7%)
- Magenta (24%)
- Yellow (15%)

Brightness & Saturation Gradients

These gradients show how the Hex color EEC1D8 changes by changing the brightness by 10 percent. The first figure shows a shift by +10% for each color and the second figure -10%.

Similar to the brightness gradients but the following saturation gradients show a change of the Hex color EEC1D8 by changing the saturation by 10% instead.

 EEC1D8

FFFFFF

 FFFAFF

 EEC1D8

 D2A6BC

 B68BA1

 9B7287

 80596E

 674155

 4E2A3E

 371528

 230014

 000000

 EEC1D8

 EEC1D8

 EEA9CC

 EED9E4

 EE91C1

 EEF1EF

 EE7AB5

 EEFFFB

 EE62A9

 EEFFFF

 EE4A9E

 EE3292

 EE1A87

 EE037B

 EE007A

Harmonies

Analogous

The Analogous color harmony consists of three colors that are next to each other on the color wheel.



DCC5E9



EEC1D8



F6C0C4

Triad

The Triadic color harmony groups three colors that are evenly spaced from another and form a triangle on the color wheel.



EEC1D8



D2CFA8



9CD7E8

Complementary

The Complementary color scheme is a pair of colors which are on the opposite of each other on the color wheel.



EEC1D8



C1EED7

Split Complementary

Split-complementary colors differ from the complementary color scheme. The scheme consists of three colors, the original color and two neighbors of the complement color.



9BD9D6



EEC1D8



BDD4B2

Square

The Square scheme is like the rectangle color scheme, but the four colors are evenly spaced on the color wheel.



EEC1D8



E6C9A9



A8D8C3



ACD2F2

Rectangle

The Rectangle color scheme consists of four colors that form a rectangle on the color wheel.



EEC1D8



F5C2B8



A8D8C3



9AD8E2

Sweetspot

The Sweet Spot groups the original color and five complimentary colors.



EEC1D8



FFF0F8



D7C1EE



80777B



000000



808080

Same Dimension

The Same Dimension uses a secret algorithm to generate beautiful new colors.



EEC1D8



FFC4E2



EEC1C2



786C72



B8005E



38001D

Inverse Universe

The Inverse Universe completely reimagines the original color for something new.



EEC1D8



FFC4E2



C1EEED



786C72



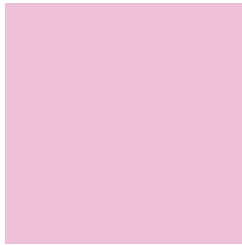
B8005E



38001D

Previews

White Background



This preview shows how the Hex color EEC1D8 looks on a white background.

Color Contrast Check

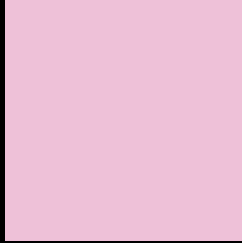
Large Text (above 18pt) WCAG AA × Fail

Any Text WCAG AA × Fail

Large Text (above 18pt) WCAG AAA × Fail

Any Text WCAG AAA × Fail

Black Background



This preview shows how the Hex color EEC1D8 looks on a black background.

Color Contrast Check

Large Text (above 18pt) WCAG AA ✓ Pass

Any Text WCAG AA ✓ Pass

Large Text (above 18pt) WCAG AAA ✓ Pass

Any Text WCAG AAA ✓ Pass

If you want to check with other color combinations, try the [Color Contrast Checker](#).

Hex EEC1D8 Background



This preview shows how black text looks on a background with the Hex color EEC1D8.

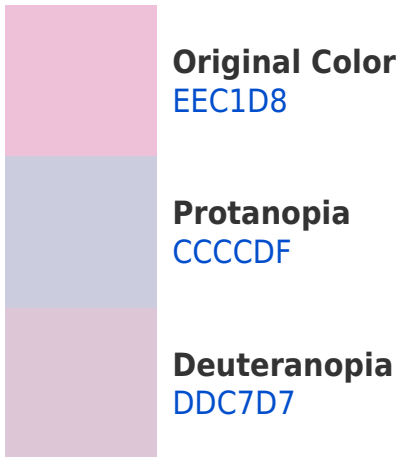


This preview shows how white text looks on a background with the Hex color EEC1D8.

Color Blindness Simulation

Color vision deficiency is a very complex topic, and I could not describe the different causes any better than Wikipedia does, so if you want to learn more, you should check out their [article about color blindness](#).

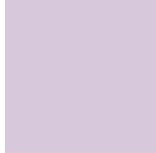
Dichromacy



Trichromacy



Original Color
EEC1D8



Protanomaly
D8C8DC



Deuteranomaly
E3C5D7

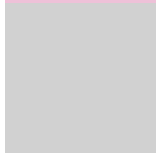


Tritanomaly
EDC2D4

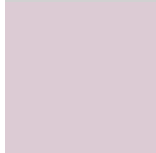
Monochromacy



Original Color
EEC1D8



Achromatopsia
D1D1D1



Achromatomaly
DCCBD4

CSS Examples

Text

The CSS property to change the color of the text to Hex EEC1D8 is called "color". The color property can be set on classes, ids or directly on the HTML element.

This example shows how text in the color #EEC1D8 looks like.

```
.text, #text, p{  
    color:#EEC1D8  
}
```

If you want to add a text shadow in that color use the text-shadow property, you can generate a text shadow directly with our [CSS Text Shadow Generator](#).

Here you see how black text with a 4 pixel #EEC1D8 colored shadow looks like.

```
.shadow{ text-shadow: 4px 4px 2px #EEC1D8  
}
```

Border

The CSS property to change the border of an element to Hex EEC1D8 is called "border". The border property can be set on classes, ids or directly on the HTML element.

This example shows the color as border, it can be applied via the CSS property "border" or "border-color".

```
.border, #border, table{ border:4px solid  
#EEC1D8 }
```

If only the border color should be changed use the property `border-color`.

```
.border{ border-color:#EEC1D8 }
```

If you want to add a box shadow in that color use:

Here you see how a box with a 4 pixel #EEC1D8 colored shadow looks like.

```
.boxshadow{ -moz-box-shadow:4px 4px 4px  
4px #EEC1D8; -webkit-box-shadow:4px 4px  
4px 4px #EEC1D8; box-shadow:4px 4px 4px  
4px #EEC1D8 }
```

Background

The CSS property to change the background color of an element to Hex EEC1D8 is called "background". The background property can be set on classes, ids or directly on the HTML element.

```
.background, #background, body{  
background:#EEC1D8 }
```

If only the background color should be changed can be used:

```
.background{ background-color:#EEC1D8 }
```

This example shows the color as background, it is applied via the CSS property "background".

To optimize and compress your CSS code, you can use our [online CSS compressor and optimizer](#) based on csstidy. If you want to create a linear or radial gradient as background or border, check our [CSS Gradient Generator](#).

Hey! You found this booklet interesting? Support Converting Colors with the new Membership Option!

The pro membership hides all ads, plus gives you double the colors in the color bucket, and more awesome pro features!

[Learn more, Memberships starting at \\$2.50/m!](#)

**Follow me
on Twitter!**

@ConvertingColor