

Converting Colors

Hex(EEC3EC)

Have a look what the booklet for
Hex(EEC3EC) contains.

Hex(EEC3EC)	3
<i>Conversions</i>	4
<i>Details</i>	6
<i>Harmonies</i>	11
<i>Previews</i>	23
<i>Color Blindness Simulation</i>	26
<i>CSS Examples</i>	29

Color

Hex(**EEC3EC**)

Conversions

Conversions Part 1

Format	Color
Hex	EEC3EC
RGB	238, 195, 236
RGB Percent	93%, 76%, 93%
CMY	0.0667, 0.2353, 0.0745
CMYK	0.00, 0.18, 0.01, 0.07
HSL	303°, 56%, 85%
HSV	303°, 18%, 93%
XYZ	69.9153, 63.2635, 87.8830
YIQ	212.5310, 12.4670, 21.8670

Conversions

Conversions Part 2

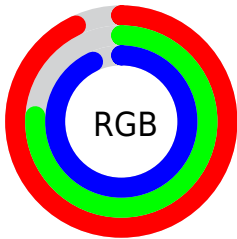
Format	Color
R _Y B	238, 195, 236
Decimal	15647724
CIE Lab	83.58, 22.12, -14.52
CIE LCh	84, 26.464, 326.718
Yxy	63.2635, 0.3163, 0.2862
Android (android.graphics.Color)	4293837804 (0xFFEEC3EC)
YUV	212.5310, 11.5702, 22.3363
Hunter-Lab	79.5383, 17.7119, -9.8335

Details

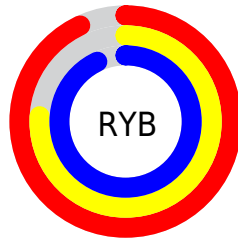
The Hex color **EEC3EC** is a light color, and the websafe version is hex **FFCCFF**. A complement of this color would be **C3EEC5**, and the grayscale version is **D4D4D4**.

A 20% lighter version of the original color is **FFFCFF**, and **B68DB4** is the 20% darker color. If you saturate the color by 10%, you get **EEABEB**, and if you desaturate by 10%, it is **EEDBED**.

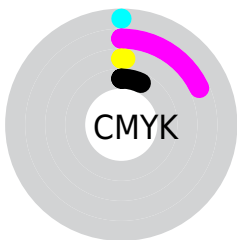
Distribution



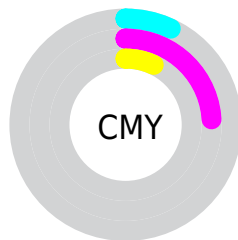
- Red (93%)
- Green (76%)
- Blue (93%)



- Red (93%)
- Yellow (76%)
- Blue (93%)



- Cyan (0%)
- Magenta (18%)
- Yellow (1%)
- Black (7%)



- Cyan (7%)
- Magenta (24%)
- Yellow (7%)

Brightness & Saturation Gradients

These gradients show how the Hex color EEC3EC changes by changing the brightness by 10 percent. The first figure shows a shift by +10% for each color and the second figure -10%.

Similar to the brightness gradients but the following saturation gradients show a change of the Hex color EEC3EC by changing the saturation by 10% instead.

 EEC3EC

 EEC3EC

FFFFFF

 D2A8D0

 FFFCFF

 B68DB4

 9B7399

 805A7F

 674366

 4E2C4E

 371637

 220022

 000008

 EEC3EC

 EEC3EC

 EEABEB

 EEDBED

 EE93EA

 EEF3EE

 EE7CE9

 EEFFEF

 EE64E8

 EEFFF0

 EE4CE6

 EEFFF2

 EE34E5

 EEFFF3

 EE1CE4

 EEFFF4

 EE05E3

 EEFFF5

 EE00E3

 EEFFF6

Harmonies

Analogous

The Analogous color harmony consists of three colors that are next to each other on the color wheel.



D1CBFD



EEC3EC



FFBFD4

Triad

The Triadic color harmony groups three colors that are evenly spaced from another and form a triangle on the color wheel.



EEC3EC



E6CE9F



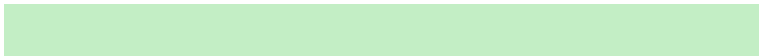
89DEE6

Complementary

The Complementary color scheme is a pair of colors which are on the opposite of each other on the color wheel.



EEC3EC



C3EEC5

Split Complementary

Split-complementary colors differ from the complementary color scheme. The scheme consists of three colors, the original color and two neighbors of the complement color.



96DECD



EEC3EC



CBD6A3

Square

The Square scheme is like the rectangle color scheme, but the four colors are evenly spaced on the color wheel.



EEC3EC



FAC6A8



AFDDB4



93DAF9

Rectangle

The Rectangle color scheme consists of four colors that form a rectangle on the color wheel.



EEC3EC



FFBFC3



AFDDB4



8BDEDE

Sweetspot

The Sweet Spot groups the original color and five complimentary colors.



EEC3EC



FFF2FE



C4C3EE



80787F



000000



808080

Same Dimension

The Same Dimension uses a secret algorithm to generate beautiful new colors.



EEC3EC



FFC7FC



EEC3D7



786C77



B800AF



380035

Inverse Universe

The Inverse Universe completely reimagines the original color for something new.



EEC3EC



FFC7FC



C3EEDA



786C77



B800AF



380035

Previews

White Background



This preview shows how the Hex color EEC3EC looks on a white background.

Color Contrast Check

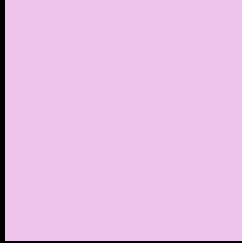
Large Text (above 18pt) WCAG AA × Fail

Any Text WCAG AA × Fail

Large Text (above 18pt) WCAG AAA × Fail

Any Text WCAG AAA × Fail

Black Background



This preview shows how the Hex color EEC3EC looks on a black background.

Color Contrast Check

Large Text (above 18pt) WCAG AA ✓ Pass

Any Text WCAG AA ✓ Pass

Large Text (above 18pt) WCAG AAA ✓ Pass

Any Text WCAG AAA ✓ Pass

If you want to check with other color combinations, try the [Color Contrast Checker](#).

Hex EEC3EC Background



This preview shows how black text looks on a background with the Hex color EEC3EC.



This preview shows how white text looks on a background with the Hex color EEC3EC.

Color Blindness Simulation

Color vision deficiency is a very complex topic, and I could not describe the different causes any better than Wikipedia does, so if you want to learn more, you should check out their [article about color blindness](#).

Dichromacy





Tritanopia
EBC7D6

Trichromacy



Original Color
EEC3EC



Protanomaly
D7CBF1



Deuteranomaly
E1C8EB

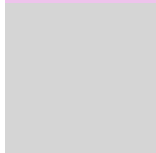


Tritanomaly
ECC6DE

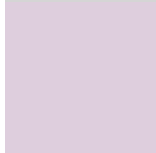
Monochromacy



Original Color
EEC3EC



Achromatopsia
D5D5D5



Achromatomaly
DECEDD

CSS Examples

Text

The CSS property to change the color of the text to Hex EEC3EC is called "color". The color property can be set on classes, ids or directly on the HTML element.

This example shows how text in the color #EEC3EC looks like.

```
.text, #text, p{  
    color:#EEC3EC  
}
```

If you want to add a text shadow in that color use the text-shadow property, you can generate a text shadow directly with our [CSS Text Shadow Generator](#).

Here you see how black text with a 4 pixel #EEC3EC colored shadow looks like.

```
.shadow{ text-shadow: 4px 4px 2px #EEC3EC  
}
```

Border

The CSS property to change the border of an element to Hex EEC3EC is called "border". The border property can be set on classes, ids or directly on the HTML element.

This example shows the color as border, it can be applied via the CSS property "border" or "border-color".

```
.border, #border, table{ border:4px solid  
#EEC3EC }
```

If only the border color should be changed use the property `border-color`.

```
.border{ border-color:#EEC3EC }
```

If you want to add a box shadow in that color use:

Here you see how a box with a 4 pixel #EEC3EC colored shadow looks like.

```
.boxshadow{ -moz-box-shadow:4px 4px 4px  
4px #EEC3EC; -webkit-box-shadow:4px 4px  
4px 4px #EEC3EC; box-shadow:4px 4px 4px  
4px #EEC3EC }
```

Background

The CSS property to change the background color of an element to Hex EEC3EC is called "background". The background property can be set on classes, ids or directly on the HTML element.

```
.background, #background, body{  
background:#EEC3EC }
```

If only the background color should be changed can be used:

```
.background{ background-color:#EEC3EC }
```

This example shows the color as background, it is applied via the CSS property "background".

To optimize and compress your CSS code, you can use our [online CSS compressor and optimizer](#) based on csstidy. If you want to create a linear or radial gradient as background or border, check our [CSS Gradient Generator](#).

Hey! You found this booklet interesting? Support Converting Colors with the new Membership Option!

The pro membership hides all ads, plus gives you double the colors in the color bucket, and more awesome pro features!

[Learn more, Memberships starting at \\$2.50/m!](#)

**Follow me
on Twitter!**

@ConvertingColor