

Converting Colors

Hex(EEC9BB)

Have a look what the booklet for
Hex(EEC9BB) contains.

Hex(EEC9BB)	3
<i>Conversions</i>	4
<i>Details</i>	6
<i>Harmonies</i>	11
<i>Previews</i>	23
<i>Color Blindness Simulation</i>	26
<i>CSS Examples</i>	29

Color

Hex(EEC9BB)

Conversions

Conversions Part 1

Format	Color
Hex	EEC9BB
RGB	238, 201, 187
RGB Percent	93%, 79%, 73%
CMY	0.0667, 0.2118, 0.2667
CMYK	0.00, 0.16, 0.21, 0.07
HSL	16°, 60%, 83%
HSV	16°, 21%, 93%
XYZ	65.1162, 63.5383, 55.8458
YIQ	210.4670, 26.5460, 3.4900

Conversions

Conversions Part 2

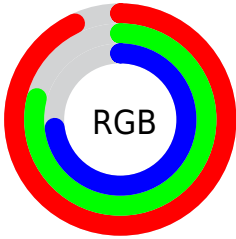
Format	Color
R _Y B	238, 206, 187
Decimal	15649211
CIE Lab	83.72, 10.93, 11.85
CIE LCh	84, 16.118, 47.303
Yxy	63.5383, 0.3529, 0.3444
Android (android.graphics.Color)	4293839291 (0xFFEEC9BB)
YUV	210.4670, -11.5692, 24.1464
Hunter-Lab	79.7109, 6.3233, 14.2588

Details

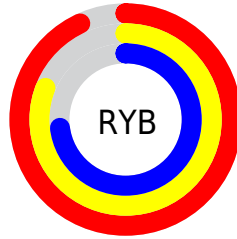
The Hex color **EEC9BB** is a light color, and the websafe version is hex **FFCCCC**. A complement of this color would be **BBE0EE**, and the grayscale version is **D3D3D3**.

A 20% lighter version of the original color is **FFFFFF3**, and **B59386** is the 20% darker color. If you saturate the color by 10%, you get **EEB8A3**, and if you desaturate by 10%, it is **EEDAD3**.

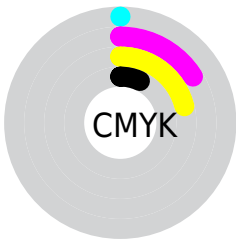
Distribution



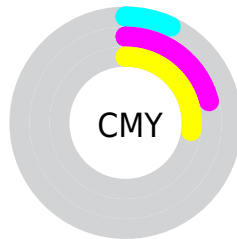
- Red (93%)
- Green (79%)
- Blue (73%)



- Red (93%)
- Yellow (81%)
- Blue (73%)



- Cyan (0%)
- Magenta (16%)
- Yellow (21%)
- Black (7%)



- Cyan (7%)
- Magenta (21%)
- Yellow (27%)

Brightness & Saturation Gradients

These gradients show how the Hex color EEC9BB changes by changing the brightness by 10 percent. The first figure shows a shift by +10% for each color and the second figure -10%.

Similar to the brightness gradients but the following saturation gradients show a change of the Hex color EEC9BB by changing the saturation by 10% instead.

 EEC9BB

 EEC9BB

FFFFFF

 D1AEA0

 FFFFF3

 B59386

 9A796D

 806054

 66493D

 4D3227

 361D13

 210400

 000000

 EEC9BB

 EEC9BB

 EEB8A3

 EEDAD3

 EEA68B

 EEECEB

 EE9574

 EEFDFF

 EE845C

 EEEFFF

 EE7344

 EE612C

 EE5014

 EE4100

Harmonies

Analogous

The Analogous color harmony consists of three colors that are next to each other on the color wheel.



F1C7C8



EEC9BB



E3CDB3

Triad

The Triadic color harmony groups three colors that are evenly spaced from another and form a triangle on the color wheel.



EEC9BB



B3D9CA



CBCFED

Complementary

The Complementary color scheme is a pair of colors which are on the opposite of each other on the color wheel.



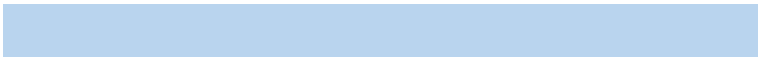
EEC9BB



BBE0EE

Split Complementary

Split-complementary colors differ from the complementary color scheme. The scheme consists of three colors, the original color and two neighbors of the complement color.



B9D4EE



EEC9BB



AADAD9

Square

The Square scheme is like the rectangle color scheme, but the four colors are evenly spaced on the color wheel.



EEC9BB



C2D7BC



ACD8E6



DECAE5

Rectangle

The Rectangle color scheme consists of four colors that form a rectangle on the color wheel.



EEC9BB



D9D1B3



ACD8E6



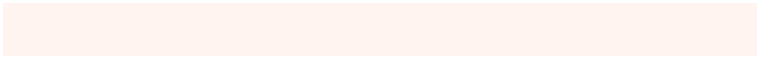
C5D1EF

Sweetspot

The Sweet Spot groups the original color and five complimentary colors.



EEC9BB



FFF4F0



EEBBE0



807977



000000



808080

Same Dimension

The Same Dimension uses a secret algorithm to generate beautiful new colors.



EEC9BB



FFCFBD



EEE2BB



786F6C



B83200



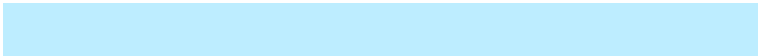
380F00

Inverse Universe

The Inverse Universe completely reimagines the original color for something new.



BBE0EE



BDEDFF



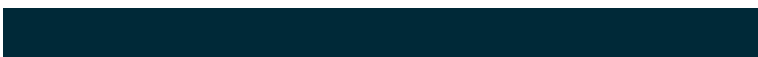
BBC7EE



6C7578



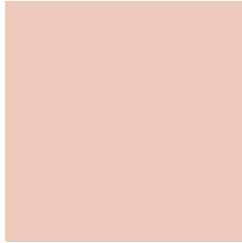
0085B8



002938

Previews

White Background



This preview shows how the Hex color EEC9BB looks on a white background.

Color Contrast Check

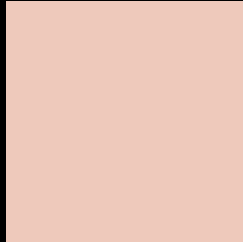
Large Text (above 18pt) WCAG AA × Fail

Any Text WCAG AA × Fail

Large Text (above 18pt) WCAG AAA × Fail

Any Text WCAG AAA × Fail

Black Background



This preview shows how the Hex color EEC9BB looks on a black background.

Color Contrast Check

Large Text (above 18pt) WCAG AA ✓ Pass

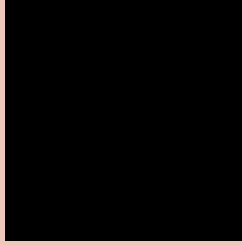
Any Text WCAG AA ✓ Pass

Large Text (above 18pt) WCAG AAA ✓ Pass

Any Text WCAG AAA ✓ Pass

If you want to check with other color combinations, try the [Color Contrast Checker](#).

Hex EEC9BB Background



This preview shows how black text looks on a background with the Hex color EEC9BB.

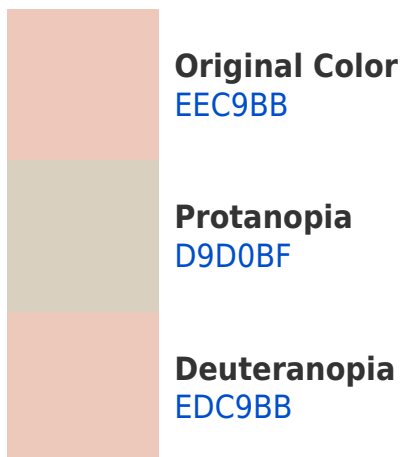


This preview shows how white text looks on a background with the Hex color EEC9BB.

Color Blindness Simulation

Color vision deficiency is a very complex topic, and I could not describe the different causes any better than Wikipedia does, so if you want to learn more, you should check out their [article about color blindness](#).

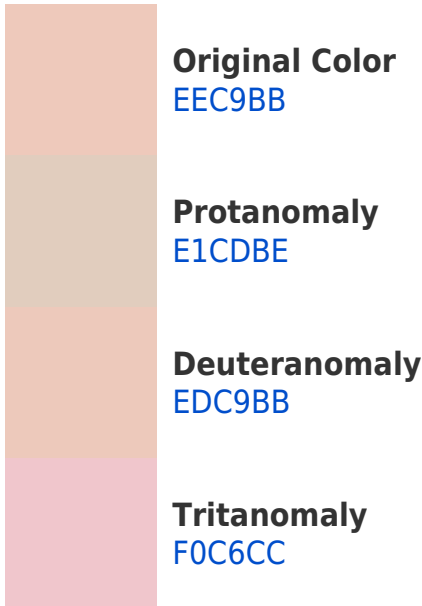
Dichromacy



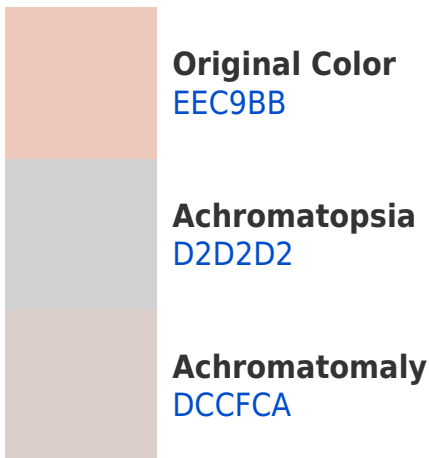


Tritanopia
F1C5D5

Trichromacy



Monochromacy



CSS Examples

Text

The CSS property to change the color of the text to Hex EEC9BB is called "color". The color property can be set on classes, ids or directly on the HTML element.

This example shows how text in the color #EEC9BB looks like.

```
.text, #text, p{  
    color:#EEC9BB  
}
```

If you want to add a text shadow in that color use the text-shadow property, you can generate a text shadow directly with our [CSS Text Shadow Generator](#).

Here you see how black text with a 4 pixel #EEC9BB colored shadow looks like.

```
.shadow{ text-shadow: 4px 4px 2px #EEC9BB  
}
```

Border

The CSS property to change the border of an element to Hex EEC9BB is called "border". The border property can be set on classes, ids or directly on the HTML element.

This example shows the color as border, it can be applied via the CSS property "border" or "border-color".

```
.border, #border, table{ border:4px solid  
#EEC9BB }
```

If only the border color should be changed use the property `border-color`.

```
.border{ border-color:#EEC9BB }
```

If you want to add a box shadow in that color use:

Here you see how a box with a 4 pixel #EEC9BB colored shadow looks like.

```
.boxshadow{ -moz-box-shadow:4px 4px 4px  
4px #EEC9BB; -webkit-box-shadow:4px 4px  
4px 4px #EEC9BB; box-shadow:4px 4px 4px  
4px #EEC9BB }
```

Background

The CSS property to change the background color of an element to Hex EEC9BB is called "background". The background property can be set on classes, ids or directly on the HTML element.

```
.background, #background, body{  
background:#EEC9BB }
```

If only the background color should be changed can be used:

```
.background{ background-color:#EEC9BB }
```

This example shows the color as background, it is applied via the CSS property "background".

To optimize and compress your CSS code, you can use our [online CSS compressor and optimizer](#) based on csstidy. If you want to create a linear or radial gradient as background or border, check our [CSS Gradient Generator](#).

Hey! You found this booklet interesting? Support Converting Colors with the new Membership Option!

The pro membership hides all ads, plus gives you double the colors in the color bucket, and more awesome pro features!

[Learn more, Memberships starting at \\$2.50/m!](#)

**Follow me
on Twitter!**

@ConvertingColor