

Converting Colors

Hex(EED2D7)

Have a look what the booklet for
Hex(EED2D7) contains.

Hex(EED2D7)	3
<i>Conversions</i>	4
<i>Details</i>	6
<i>Harmonies</i>	11
<i>Previews</i>	23
<i>Color Blindness Simulation</i>	26
<i>CSS Examples</i>	29

Color

Hex(EED2D7)

Conversions

Conversions Part 1

Format	Color
Hex	EED2D7
RGB	238, 210, 215
RGB Percent	93%, 82%, 84%
CMY	0.0667, 0.1765, 0.1569
CMYK	0.00, 0.12, 0.10, 0.07
HSL	349°, 45%, 88%
HSV	349°, 12%, 93%
XYZ	70.5722, 69.1766, 73.9228
YIQ	218.9420, 15.0830, 7.4910

Conversions

Conversions Part 2

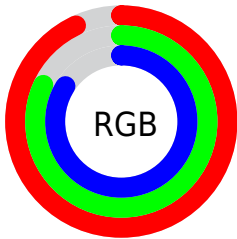
Format	Color
R _Y B	238, 210, 215
Decimal	15651543
CIE Lab	86.59, 10.56, 1.10
CIE LCh	87, 10.613, 5.959
Yxy	69.1766, 0.3303, 0.3238
Android (android.graphics.Color)	4293841623 (0xFFEED2D7)
YUV	218.9420, -1.9434, 16.7139
Hunter-Lab	83.1725, 5.9062, 5.5244

Details

The Hex color **EED2D7** is a light color, and the websafe version is hex **FFCCCC**. A complement of this color would be **D2EEE9**, and the grayscale version is **DBDBDB**.

A 20% lighter version of the original color is **FFFFFF**, and **B69CA0** is the 20% darker color. If you saturate the color by 10%, you get **EEBAC3**, and if you desaturate by 10%, it is **EEEEAE**.

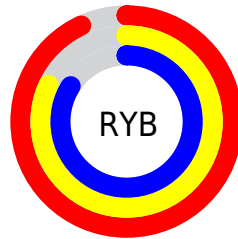
Distribution



Red (93%)

Green (82%)

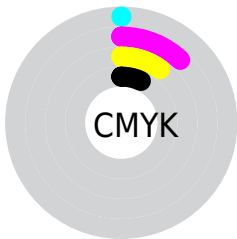
Blue (84%)



Red (93%)

Yellow (82%)

Blue (84%)

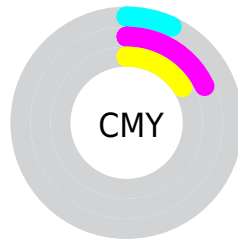


Cyan (0%)

Magenta (12%)

Yellow (10%)

Black (7%)



Cyan (7%)

Magenta (18%)

Yellow (16%)

Brightness & Saturation Gradients

These gradients show how the Hex color EED2D7 changes by changing the brightness by 10 percent. The first figure shows a shift by +10% for each color and the second figure -10%.

Similar to the brightness gradients but the following saturation gradients show a change of the Hex color EED2D7 by changing the saturation by 10% instead.

 EED2D7

FFFFFF

 EED2D7

 D2B6BB

 B69CA0

 9B8186

 81686D

 675055

 4F393E

 382328

 220F13

 000000

 EED2D7

 EED2D7

 EEBAC3

 EEEAEB

 EEA2B0

 EEEFFE

 EE8B9C

 EEEFFF

 EE7389

 EE5B75

 EE4362

 EE2B4E

 EE143B

 EE002B

Harmonies

Analogous

The Analogous color harmony consists of three colors that are next to each other on the color wheel.



E8D3E1



EED2D7



EED3CD

Triad

The Triadic color harmony groups three colors that are evenly spaced from another and form a triangle on the color wheel.



EED2D7



D4DCC8



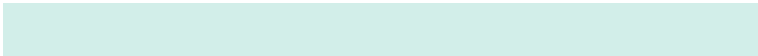
C6DCEB

Complementary

The Complementary color scheme is a pair of colors which are on the opposite of each other on the color wheel.



EED2D7



D2EEE9

Split Complementary

Split-complementary colors differ from the complementary color scheme. The scheme consists of three colors, the original color and two neighbors of the complement color.



C0DEE4



EED2D7



C9DED0

Square

The Square scheme is like the rectangle color scheme, but the four colors are evenly spaced on the color wheel.



EED2D7



DFD9C5



C1DFDA



D1D9ED

Rectangle

The Rectangle color scheme consists of four colors that form a rectangle on the color wheel.



EED2D7



EBD4C8



C1DFDA



C3DDE9

Sweetspot

The Sweet Spot groups the original color and five complimentary colors.



EED2D7



FFF5F7



E9D2EE



80797A



000000



808080

Same Dimension

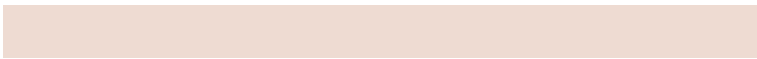
The Same Dimension uses a secret algorithm to generate beautiful new colors.



EED2D7



FFDBE2



EEDBD2



786C6E



B80021



38000A

Inverse Universe

The Inverse Universe completely reimagines the original color for something new.



EED2D7



FFDBE2



D2E5EE



786C6E



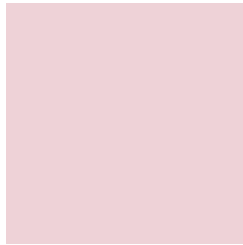
B80021



38000A

Previews

White Background



This preview shows how the Hex color EED2D7 looks on a white background.

Color Contrast Check

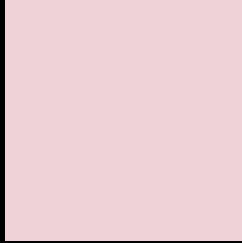
Large Text (above 18pt) WCAG AA × Fail

Any Text WCAG AA × Fail

Large Text (above 18pt) WCAG AAA × Fail

Any Text WCAG AAA × Fail

Black Background



This preview shows how the Hex color EED2D7 looks on a black background.

Color Contrast Check

Large Text (above 18pt) WCAG AA ✓ Pass

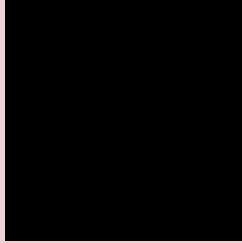
Any Text WCAG AA ✓ Pass

Large Text (above 18pt) WCAG AAA ✓ Pass

Any Text WCAG AAA ✓ Pass

If you want to check with other color combinations, try the [Color Contrast Checker](#).

Hex EED2D7 Background



This preview shows how black text looks on a background with the Hex color EED2D7.

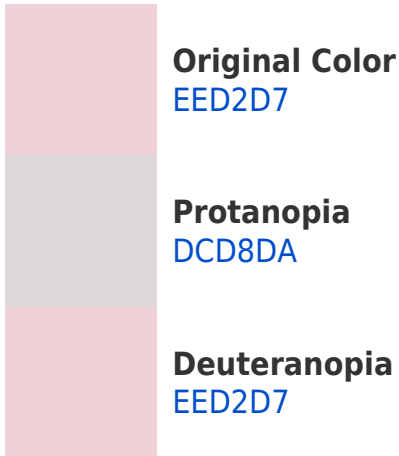


This preview shows how white text looks on a background with the Hex color EED2D7.

Color Blindness Simulation

Color vision deficiency is a very complex topic, and I could not describe the different causes any better than Wikipedia does, so if you want to learn more, you should check out their [article about color blindness](#).

Dichromacy



Trichromacy



Original Color
EED2D7

Protanomaly
E3D6D9

Deuteranomaly
EED2D7

Tritanomaly
EFD1DD

Monochromacy



Original Color
EED2D7

Achromatopsia
DBDBDB

Achromatomaly
E2D8DA

CSS Examples

Text

The CSS property to change the color of the text to Hex EED2D7 is called "color". The color property can be set on classes, ids or directly on the HTML element.

This example shows how text in the color #EED2D7 looks like.

```
.text, #text, p{  
    color:#EED2D7  
}
```

If you want to add a text shadow in that color use the text-shadow property, you can generate a text shadow directly with our [CSS Text Shadow Generator](#).

Here you see how black text with a 4 pixel #EED2D7 colored shadow looks like.

```
.shadow{ text-shadow: 4px 4px 2px #EED2D7
}
```

Border

The CSS property to change the border of an element to Hex EED2D7 is called "border". The border property can be set on classes, ids or directly on the HTML element.

This example shows the color as border, it can be applied via the CSS property "border" or "border-color".

```
.border, #border, table{ border:4px solid
#EED2D7 }
```

If only the border color should be changed use the property `border-color`.

```
.border{ border-color:#EED2D7 }
```

If you want to add a box shadow in that color use:

Here you see how a box with a 4 pixel #EED2D7 colored shadow looks like.

```
.boxshadow{ -moz-box-shadow:4px 4px 4px  
4px #EED2D7; -webkit-box-shadow:4px 4px  
4px 4px #EED2D7; box-shadow:4px 4px 4px  
4px #EED2D7 }
```

Background

The CSS property to change the background color of an element to Hex EED2D7 is called "background". The background property can be set on classes, ids or directly on the HTML element.

```
.background, #background, body{  
background:#EED2D7 }
```

If only the background color should be changed can be used:

```
.background{ background-color:#EED2D7 }
```

This example shows the color as background, it is applied via the CSS property "background".

To optimize and compress your CSS code, you can use our [online CSS compressor and optimizer](#) based on csstidy. If you want to create a linear or radial gradient as background or border, check our [CSS Gradient Generator](#).

Hey! You found this booklet interesting? Support Converting Colors with the new Membership Option!

The pro membership hides all ads, plus gives you double the colors in the color bucket, and more awesome pro features!

[Learn more, Memberships starting at \\$2.50/m!](#)

**Follow me
on Twitter!**

@ConvertingColor