

Converting Colors

Hex(EEDACC)

Have a look what the booklet for
Hex(EEDACC) contains.

Hex(EEDACC)	3
<i>Conversions</i>	4
<i>Details</i>	6
<i>Harmonies</i>	11
<i>Previews</i>	23
<i>Color Blindness Simulation</i>	26
<i>CSS Examples</i>	29

Color

Hex(EEDACC)

Conversions

Conversions Part 1

Format	Color
Hex	EEDACC
RGB	238, 218, 204
RGB Percent	93%, 85%, 80%
CMY	0.0667, 0.1451, 0.2000
CMYK	0.00, 0.08, 0.14, 0.07
HSL	25°, 50%, 87%
HSV	25°, 14%, 93%
XYZ	71.2304, 72.6796, 67.4011
YIQ	222.3840, 16.4140, -0.1140

Conversions

Conversions Part 2

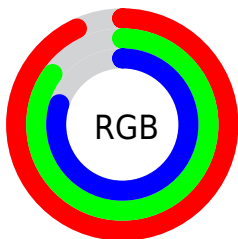
Format	Color
R _Y B	238, 228, 204
Decimal	15653580
CIE Lab	88.29, 4.62, 9.37
CIE LCh	88, 10.444, 63.760
Yxy	72.6796, 0.3371, 0.3439
Android (android.graphics.Color)	4293843660 (0xFFEEDACC)
YUV	222.3840, -9.0633, 13.6952
Hunter-Lab	85.2523, -0.0505, 12.8016

Details

The Hex color **EEDACC** is a light color, and the websafe version is hex **CCCCCC**. A complement of this color would be **CCE0EE**, and the grayscale version is **DEDEDE**.

A 20% lighter version of the original color is **FFFFFF**, and **B6A396** is the 20% darker color. If you saturate the color by 10%, you get **EECCB4**, and if you desaturate by 10%, it is **EEE8E4**.

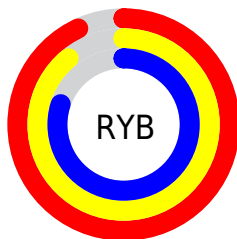
Distribution



Red (93%)

Green (85%)

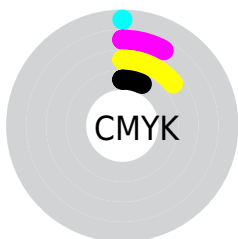
Blue (80%)



Red (93%)

Yellow (89%)

Blue (80%)

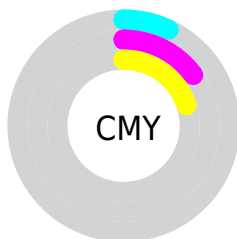


Cyan (0%)

Magenta (8%)

Yellow (14%)

Black (7%)



Cyan (7%)

Magenta (15%)

Yellow (20%)

Brightness & Saturation Gradients

These gradients show how the Hex color EEDACC changes by changing the brightness by 10 percent. The first figure shows a shift by +10% for each color and the second figure -10%.

Similar to the brightness gradients but the following saturation gradients show a change of the Hex color EEDACC by changing the saturation by 10% instead.

 EEDACC


FFFFFF

 EEDACC

 D2BEB1

 B6A396

 9B897C

 817063

 67574B

 4F4035

 382A1F

 221508

 000000

 EEDACC

 EEDACC

 EECCB4

 EEE8E4

 EEBE9C

 EEF6FC

 EEB085

 EEEFFF

 EEA26D

 EE9455

 EE863D

 EE7825

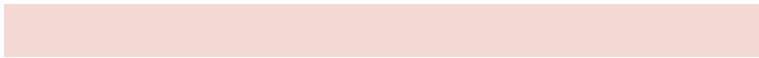
 EE6A0E

 EE6200

Harmonies

Analogous

The Analogous color harmony consists of three colors that are next to each other on the color wheel.



F3D8D3



EEDACC



E5DDCA

Triad

The Triadic color harmony groups three colors that are evenly spaced from another and form a triangle on the color wheel.



EEDACC



C7E4DE



E1DBEE

Complementary

The Complementary color scheme is a pair of colors which are on the opposite of each other on the color wheel.



EEDACC



CCE0EE

Split Complementary

Split-complementary colors differ from the complementary color scheme. The scheme consists of three colors, the original color and two neighbors of the complement color.



D5DEF1



EEDACC



C5E3E8

Square

The Square scheme is like the rectangle color scheme, but the four colors are evenly spaced on the color wheel.



EEDACC



CEE3D4



CAE1EF



ECD8E7

Rectangle

The Rectangle color scheme consists of four colors that form a rectangle on the color wheel.



EEDACC



DDDFCB



CAE1EF



DDDCF0

Sweetspot

The Sweet Spot groups the original color and five complimentary colors.



EEDACC



FFF9F5



EECCE0



807C79



000000



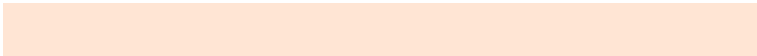
808080

Same Dimension

The Same Dimension uses a secret algorithm to generate beautiful new colors.



EEDACC



FFE5D4



EEEBCC



78716C



B84C00



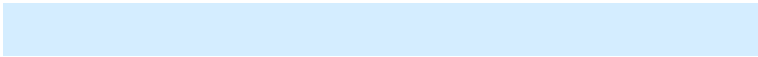
381700

Inverse Universe

The Inverse Universe completely reimagines the original color for something new.



CCE0EE



D4EDFF



CCCFEE



6C7378



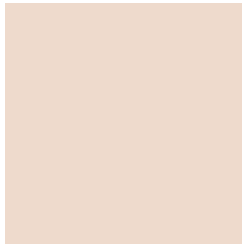
006CB8



002138

Previews

White Background



This preview shows how the Hex color EEDACC looks on a white background.

Color Contrast Check

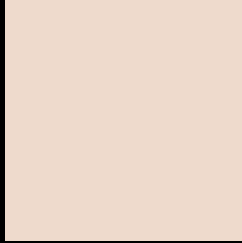
Large Text (above 18pt) WCAG AA × Fail

Any Text WCAG AA × Fail

Large Text (above 18pt) WCAG AAA × Fail

Any Text WCAG AAA × Fail

Black Background



This preview shows how the Hex color EEDACC looks on a black background.

Color Contrast Check

Large Text (above 18pt) WCAG AA ✓ Pass

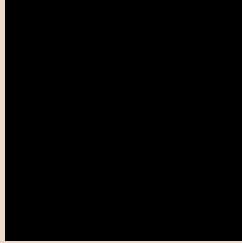
Any Text WCAG AA ✓ Pass

Large Text (above 18pt) WCAG AAA ✓ Pass

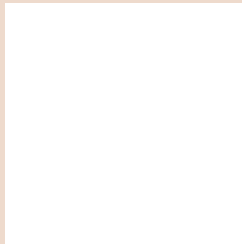
Any Text WCAG AAA ✓ Pass

If you want to check with other color combinations, try the [Color Contrast Checker](#).

Hex EEDACC Background



This preview shows how black text looks on a background with the Hex color EEDACC.

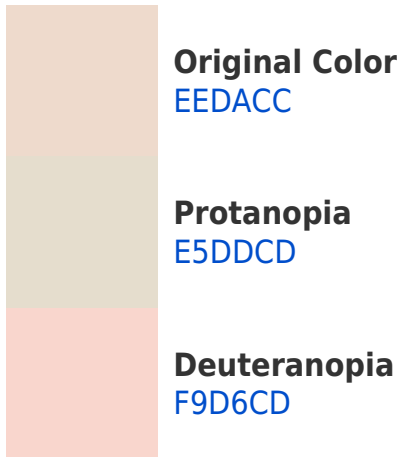


This preview shows how white text looks on a background with the Hex color EEDACC.

Color Blindness Simulation

Color vision deficiency is a very complex topic, and I could not describe the different causes any better than Wikipedia does, so if you want to learn more, you should check out their [article about color blindness](#).

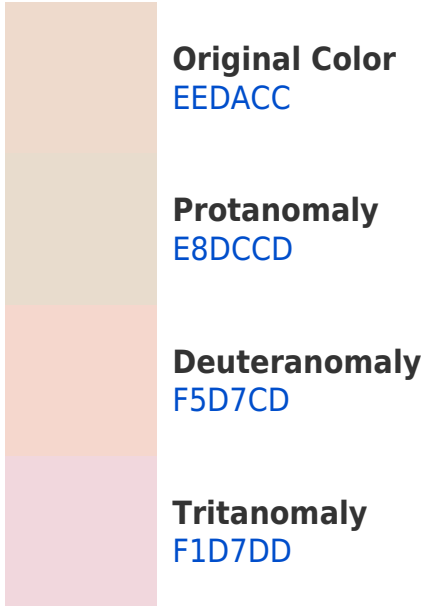
Dichromacy



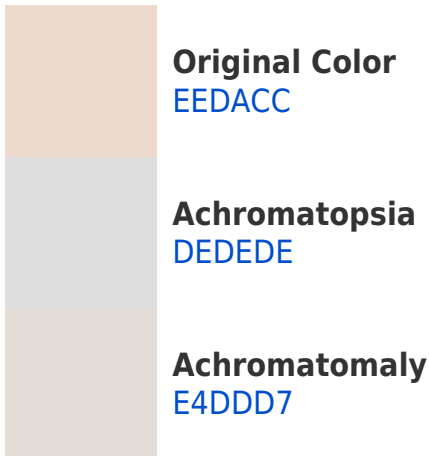


Tritanopia
F2D6E7

Trichromacy



Monochromacy



CSS Examples

Text

The CSS property to change the color of the text to Hex EEDACC is called "color". The color property can be set on classes, ids or directly on the HTML element.

This example shows how text in the color #EEDACC looks like.

```
.text, #text, p{  
    color:#EEDACC  
}
```

If you want to add a text shadow in that color use the text-shadow property, you can generate a text shadow directly with our [CSS Text Shadow Generator](#).

Here you see how black text with a 4 pixel #EEDACC colored shadow looks like.

```
.shadow{ text-shadow: 4px 4px 2px #EEDACC
}
```

Border

The CSS property to change the border of an element to Hex EEDACC is called "border". The border property can be set on classes, ids or directly on the HTML element.

This example shows the color as border, it can be applied via the CSS property "border" or "border-color".

```
.border, #border, table{ border:4px solid
#EEDACC }
```

If only the border color should be changed use the property `border-color`.

```
.border{ border-color:#EEDACC }
```

If you want to add a box shadow in that color use:

Here you see how a box with a 4 pixel #EEDACC colored shadow looks like.

```
.boxshadow{ -moz-box-shadow:4px 4px 4px  
4px #EEDACC; -webkit-box-shadow:4px 4px  
4px 4px #EEDACC; box-shadow:4px 4px 4px  
4px #EEDACC }
```

Background

The CSS property to change the background color of an element to Hex EEDACC is called "background". The background property can be set on classes, ids or directly on the HTML element.

```
.background, #background, body{  
background:#EEDACC }
```

If only the background color should be changed can be used:

```
.background{ background-color:#EEDACC }
```

This example shows the color as background, it is applied via the CSS property "background".

To optimize and compress your CSS code, you can use our [online CSS compressor and optimizer](#) based on csstidy. If you want to create a linear or radial gradient as background or border, check our [CSS Gradient Generator](#).

Hey! You found this booklet interesting? Support Converting Colors with the new Membership Option!

The pro membership hides all ads, plus gives you double the colors in the color bucket, and more awesome pro features!

[Learn more, Memberships starting at \\$2.50/m!](#)

**Follow me
on Twitter!**

@ConvertingColor