

Converting Colors

Hex(EF397A)

Have a look what the booklet for
Hex(EF397A) contains.

Hex(EF397A)	3
<i>Conversions</i>	4
<i>Details</i>	6
<i>Harmonies</i>	11
<i>Previews</i>	23
<i>Color Blindness Simulation</i>	26
<i>CSS Examples</i>	29

Color

Hex(EF397A)

Conversions

Conversions Part 1

Format	Color
Hex	EF397A
RGB	239, 57, 122
RGB Percent	94%, 22%, 48%
CMY	0.0627, 0.7765, 0.5216
CMYK	0.00, 0.76, 0.49, 0.06
HSL	339°, 85%, 58%
HSV	339°, 76%, 94%
XYZ	40.5726, 22.6821, 20.6520
YIQ	118.8280, 87.6070, 58.7990

Conversions

Conversions Part 2

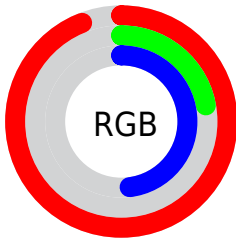
Format	Color
R_{YB}	239, 57, 122
Decimal	15677818
CIE _{Lab}	54.74, 71.55, 7.06
CIE _{LCh}	55, 71.893, 5.635
Yxy	22.6821, 0.4835, 0.2703
Android (android.graphics.Color)	4293867898 (0xFFEF397A)
YUV	118.8280, 1.5638, 105.3908
Hunter-Lab	47.6257, 68.7199, 7.6280

Details

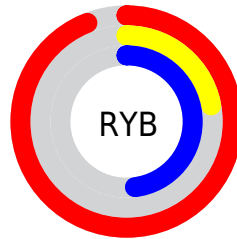
The Hex color **EF397A** is a dark color, and the websafe version is hex **CC0066**. The color can be described as middle washed rose. A complement of this color would be **39EFAE**, and the grayscale version is **777777**.

A 20% lighter version of the original color is **FF78AE**, and **B1004A** is the 20% darker color. If you saturate the color by 10%, you get **EF216B**, and if you desaturate by 10%, it is **EF5189**.

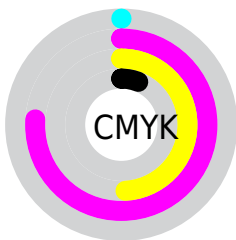
Distribution



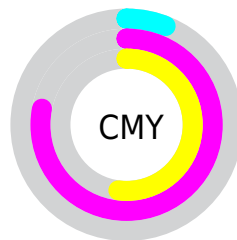
- Red (94%)
- Green (22%)
- Blue (48%)



- Red (94%)
- Yellow (22%)
- Blue (48%)



- Cyan (0%)
- Magenta (76%)
- Yellow (49%)
- Black (6%)



- Cyan (6%)
- Magenta (78%)
- Yellow (52%)

Brightness & Saturation Gradients

These gradients show how the Hex color EF397A changes by changing the brightness by 10 percent. The first figure shows a shift by +10% for each color and the second figure -10%.

Similar to the brightness gradients but the following saturation gradients show a change of the Hex color EF397A by changing the saturation by 10% instead.

 EF397A

 EF397A

FFFFFF

 D00561

 FF78AE

 B1004A

 FF95C9

 920034

 FFB3E5

 74001F

 FFD0FF

 570005

 FFE0FF

 390002

 0E0000

 000000

 EF397A

 EF397A

 EF216B

 EF5189

 EF095B

 EF6999

 EF0055

 EF81A8

 EF99B7

 EFB1C7

 EFC8D6

 EFE0E6

 EFF8F5

 EFFFFFF

Harmonies

Analogous

The Analogous color harmony consists of three colors that are next to each other on the color wheel.



D54BB8



EF397A



E74D3E

Triad

The Triadic color harmony groups three colors that are evenly spaced from another and form a triangle on the color wheel.



EF397A



519300



0097F5

Complementary

The Complementary color scheme is a pair of colors which are on the opposite of each other on the color wheel.



EF397A



39EFAE

Split Complementary

Split-complementary colors differ from the complementary color scheme. The scheme consists of three colors, the original color and two neighbors of the complement color.



009ECA



EF397A



009B4C

Square

The Square scheme is like the rectangle color scheme, but the four colors are evenly spaced on the color wheel.



EF397A



938400



009E8D



0087FF

Rectangle

The Rectangle color scheme consists of four colors that form a rectangle on the color wheel.



EF397A



D36213



009E8D



009AEA

Sweetspot

The Sweet Spot groups the original color and five complimentary colors.



EF397A



FFC4D9



AC39EF



805C69



000000



808080

Same Dimension

The Same Dimension uses a secret algorithm to generate beautiful new colors.



EF397A



FF176A



EF5139



786C70



B80042



380014

Inverse Universe

The Inverse Universe completely reimagines the original color for something new.



EF397A



FF176A



39D7EF



786C70



B80042



380014

Previews

White Background



This preview shows how the Hex color EF397A looks on a white background.

Color Contrast Check

Large Text (above 18pt) WCAG AA ✓ Pass

Any Text WCAG AA × Fail

Large Text (above 18pt) WCAG AAA × Fail

Any Text WCAG AAA × Fail

Black Background



Color Contrast Check

Large Text (above 18pt) WCAG AA ✓ Pass

Any Text WCAG AA ✓ Pass

Large Text (above 18pt) WCAG AAA ✓ Pass

Any Text WCAG AAA × Fail

If you want to check with other color combinations, try the [Color Contrast Checker](#).

Hex EF397A Background



This preview shows how black text looks on a background with the Hex color EF397A.



This preview shows how white text looks on a background with the Hex color EF397A.

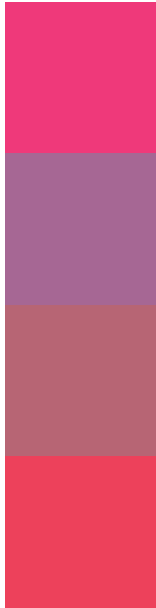
Color Blindness Simulation

Color vision deficiency is a very complex topic, and I could not describe the different causes any better than Wikipedia does, so if you want to learn more, you should check out their [article about color blindness](#).

Dichromacy



Trichromacy



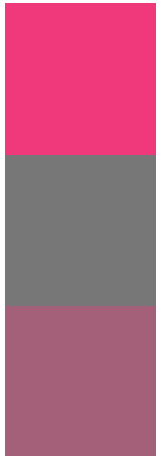
Original Color
EF397A

Protanomaly
A66794

Deuteranomaly
B76574

Tritanomaly
ED415B

Monochromacy



Original Color
EF397A

Achromatopsia
777777

Achromatomaly
A36078

CSS Examples

Text

The CSS property to change the color of the text to Hex EF397A is called "color". The color property can be set on classes, ids or directly on the HTML element.

This example shows how text in the color #EF397A looks like.

```
.text, #text, p{  
    color:#EF397A  
}
```

If you want to add a text shadow in that color use the text-shadow property, you can generate a text shadow directly with our [CSS Text Shadow Generator](#).

Here you see how black text with a 4 pixel #EF397A colored shadow looks like.

```
.shadow{ text-shadow: 4px 4px 2px #EF397A
}
```

Border

The CSS property to change the border of an element to Hex EF397A is called "border". The border property can be set on classes, ids or directly on the HTML element.

This example shows the color as border, it can be applied via the CSS property "border" or "border-color".

```
.border, #border, table{ border:4px solid
#EF397A }
```

If only the border color should be changed use the property `border-color`.

```
.border{ border-color:#EF397A }
```

If you want to add a box shadow in that color use:

Here you see how a box with a 4 pixel #EF397A colored shadow looks like.

```
.boxshadow{ -moz-box-shadow:4px 4px 4px  
4px #EF397A; -webkit-box-shadow:4px 4px  
4px 4px #EF397A; box-shadow:4px 4px 4px  
4px #EF397A }
```

Background

The CSS property to change the background color of an element to Hex EF397A is called "background". The background property can be set on classes, ids or directly on the HTML element.

```
.background, #background, body{  
background:#EF397A }
```

If only the background color should be changed can be used:

```
.background{ background-color:#EF397A }
```

This example shows the color as background, it is applied via the CSS property "background".

To optimize and compress your CSS code, you can use our [online CSS compressor and optimizer](#) based on csstidy. If you want to create a linear or radial gradient as background or border, check our [CSS Gradient Generator](#).

Hey! You found this booklet interesting? Support Converting Colors with the new Membership Option!

The pro membership hides all ads, plus gives you double the colors in the color bucket, and more awesome pro features!

[Learn more, Memberships starting at \\$2.50/m!](#)

**Follow me
on Twitter!**

@ConvertingColor