

Converting Colors

Hex(EF5672)

Have a look what the booklet for
Hex(EF5672) contains.

Hex(EF5672)	3
<i>Conversions</i>	4
<i>Details</i>	6
<i>Harmonies</i>	11
<i>Previews</i>	23
<i>Color Blindness Simulation</i>	26
<i>CSS Examples</i>	29

Color

Hex(EF5672)

Conversions

Conversions Part 1

Format	Color
Hex	EF5672
RGB	239, 86, 114
RGB Percent	94%, 34%, 45%
CMY	0.0627, 0.6627, 0.5529
CMYK	0.00, 0.64, 0.52, 0.06
HSL	349°, 83%, 64%
HSV	349°, 64%, 94%
XYZ	41.9617, 26.2212, 18.7692
YIQ	134.9390, 82.2000, 41.1440

Conversions

Conversions Part 2

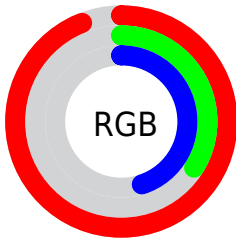
Format	Color
R_{YB}	239, 86, 114
Decimal	15685234
CIE _{Lab}	58.25, 60.69, 16.70
CIE _{LCh}	58, 62.951, 15.387
Yxy	26.2212, 0.4826, 0.3016
Android (android.graphics.Color)	4293875314 (0xFFEF5672)
YUV	134.9390, -10.3229, 91.2615
Hunter-Lab	51.2066, 56.6615, 14.1126

Details

The Hex color **EF5672** is a dark color, and the websafe version is hex **CC3366**. The color can be described as middle muted rose. A complement of this color would be **56EFD3**, and the grayscale version is **878787**.

A 20% lighter version of the original color is **FF8FA6**, and **B11242** is the 20% darker color. If you saturate the color by 10%, you get **EF3E5E**, and if you desaturate by 10%, it is **EF6E86**.

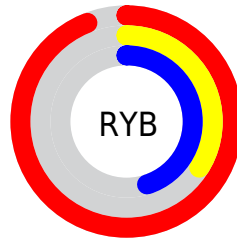
Distribution



Red (94%)

Green (34%)

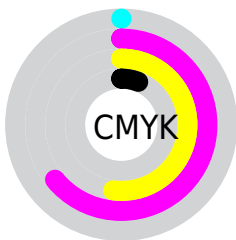
Blue (45%)



Red (94%)

Yellow (34%)

Blue (45%)

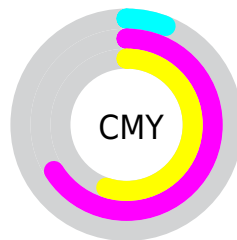


Cyan (0%)

Magenta (64%)

Yellow (52%)

Black (6%)



Cyan (6%)

Magenta (66%)

Yellow (55%)

Brightness & Saturation Gradients

These gradients show how the Hex color EF5672 changes by changing the brightness by 10 percent. The first figure shows a shift by +10% for each color and the second figure -10%.

Similar to the brightness gradients but the following saturation gradients show a change of the Hex color EF5672 by changing the saturation by 10% instead.

 EF5672

 EF5672

FFFFFF

 D0385A

 FF8FA6

 B11242

 FFABC1

 93002D

 FFC8DD

 750019

 FFE5F9

 580000

 3C0003

 160000

 000000

 EF5672

 EF5672

 EF3E5E

 EF6E86

 EF264B

 EF8699

 EF0E37

 EF9EAD

 EF002C

 EFB6C0

 EFCDD4

 EFE5E7

 EFFDFB

 EFFFFFF

Harmonies

Analogous

The Analogous color harmony consists of three colors that are next to each other on the color wheel.



E25AA9



EF5672



E0683F

Triad

The Triadic color harmony groups three colors that are evenly spaced from another and form a triangle on the color wheel.



EF5672



4B9E38



009AF7

Complementary

The Complementary color scheme is a pair of colors which are on the opposite of each other on the color wheel.



EF5672



56EFD3

Split Complementary

Split-complementary colors differ from the complementary color scheme. The scheme consists of three colors, the original color and two neighbors of the complement color.



00A3DA



EF5672



00A46E

Square

The Square scheme is like the rectangle color scheme, but the four colors are evenly spaced on the color wheel.



EF5672



8C9207



00A6A8



5189F7

Rectangle

The Rectangle color scheme consists of four colors that form a rectangle on the color wheel.



EF5672



CB7821



00A6A8



009EF0

Sweetspot

The Sweet Spot groups the original color and five complimentary colors.



EF5672



FFCFD7



D356EF



806268



000000



808080

Same Dimension

The Same Dimension uses a secret algorithm to generate beautiful new colors.



EF5672



FF3B5F



EF8656



786C6E



B80022



38000A

Inverse Universe

The Inverse Universe completely reimagines the original color for something new.



EF5672



FF3B5F



56BFEF



786C6E



B80022



38000A

Previews

White Background



This preview shows how the Hex color EF5672 looks on a white background.

Color Contrast Check

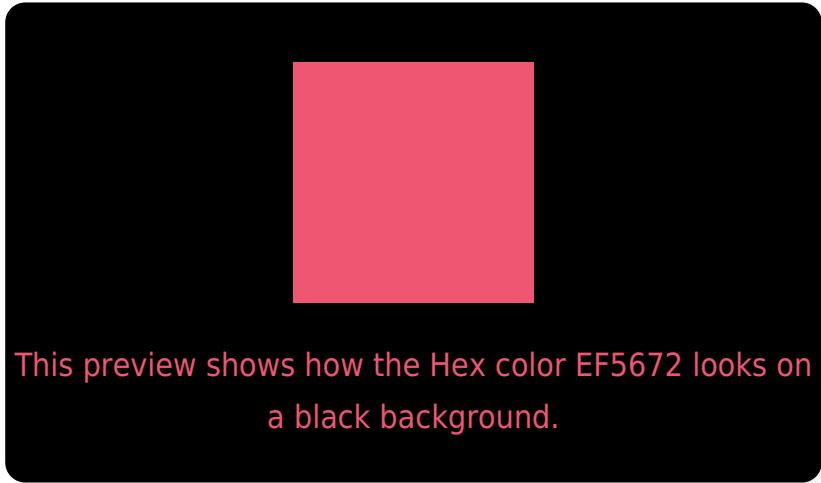
Large Text (above 18pt) WCAG AA ✓ Pass

Any Text WCAG AA × Fail

Large Text (above 18pt) WCAG AAA × Fail

Any Text WCAG AAA × Fail

Black Background



Color Contrast Check

Large Text (above 18pt) WCAG AA ✓ Pass

Any Text WCAG AA ✓ Pass

Large Text (above 18pt) WCAG AAA ✓ Pass

Any Text WCAG AAA × Fail

If you want to check with other color combinations, try the [Color Contrast Checker](#).

Hex EF5672 Background



This preview shows how black text looks on a background with the Hex color EF5672.



This preview shows how white text looks on a background with the Hex color EF5672.

Color Blindness Simulation

Color vision deficiency is a very complex topic, and I could not describe the different causes any better than Wikipedia does, so if you want to learn more, you should check out their [article about color blindness](#).

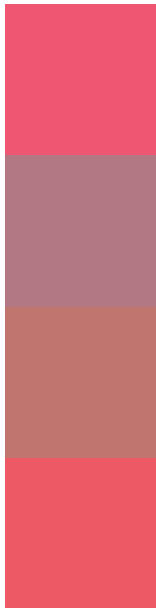
Dichromacy





Tritanopia
EE5A5F

Trichromacy



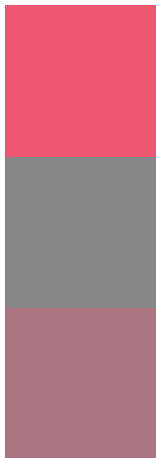
Original Color
EF5672

Protanomaly
B27883

Deuteranomaly
C0756E

Tritanomaly
EE5966

Monochromacy



Original Color
EF5672

Achromatopsia
878787

Achromatomaly
AD757F

CSS Examples

Text

The CSS property to change the color of the text to Hex EF5672 is called "color". The color property can be set on classes, ids or directly on the HTML element.

This example shows how text in the color #EF5672 looks like.

```
.text, #text, p{  
    color:#EF5672  
}
```

If you want to add a text shadow in that color use the text-shadow property, you can generate a text shadow directly with our [CSS Text Shadow Generator](#).

Here you see how black text with a 4 pixel #EF5672 colored shadow looks like.

```
.shadow{ text-shadow: 4px 4px 2px #EF5672
}
```

Border

The CSS property to change the border of an element to Hex EF5672 is called "border". The border property can be set on classes, ids or directly on the HTML element.

This example shows the color as border, it can be applied via the CSS property "border" or "border-color".

```
.border, #border, table{ border:4px solid
#EF5672 }
```

If only the border color should be changed use the property `border-color`.

```
.border{ border-color:#EF5672 }
```

If you want to add a box shadow in that color use:

Here you see how a box with a 4 pixel #EF5672 colored shadow looks like.

```
.boxshadow{ -moz-box-shadow:4px 4px 4px  
4px #EF5672; -webkit-box-shadow:4px 4px  
4px 4px #EF5672; box-shadow:4px 4px 4px  
4px #EF5672 }
```

Background

The CSS property to change the background color of an element to Hex EF5672 is called "background". The background property can be set on classes, ids or directly on the HTML element.

```
.background, #background, body{  
background:#EF5672 }
```

If only the background color should be changed can be used:

```
.background{ background-color:#EF5672 }
```

This example shows the color as background, it is applied via the CSS property "background".

To optimize and compress your CSS code, you can use our [online CSS compressor and optimizer](#) based on csstidy. If you want to create a linear or radial gradient as background or border, check our [CSS Gradient Generator](#).

Hey! You found this booklet interesting? Support Converting Colors with the new Membership Option!

The pro membership hides all ads, plus gives you double the colors in the color bucket, and more awesome pro features!

[Learn more, Memberships starting at \\$2.50/m!](#)

**Follow me
on Twitter!**

@ConvertingColor