

Converting Colors

Hex(EF5E89)

Have a look what the booklet for
Hex(EF5E89) contains.

Hex(EF5E89)	3
<i>Conversions</i>	4
<i>Details</i>	6
<i>Harmonies</i>	11
<i>Previews</i>	23
<i>Color Blindness Simulation</i>	26
<i>CSS Examples</i>	29

Color

Hex(EF5E89)

Conversions

Conversions Part 1

Format	Color
Hex	EF5E89
RGB	239, 94, 137
RGB Percent	94%, 37%, 54%
CMY	0.0627, 0.6314, 0.4627
CMYK	0.00, 0.61, 0.43, 0.06
HSL	342°, 82%, 65%
HSV	342°, 61%, 94%
XYZ	44.1147, 28.1623, 26.7777
YIQ	142.2570, 72.6170, 44.1130

Conversions

Conversions Part 2

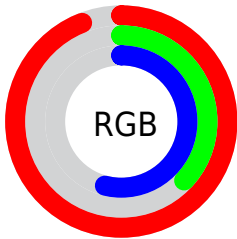
Format	Color
R_{YB}	239, 94, 137
Decimal	15687305
CIE _{Lab}	60.04, 59.39, 5.79
CIE _{LCh}	60, 59.670, 5.569
Yxy	28.1623, 0.4454, 0.2843
Android (android.graphics.Color)	4293877385 (0xFFEF5E89)
YUV	142.2570, -2.5917, 84.8436
Hunter-Lab	53.0681, 55.5149, 7.2305

Details

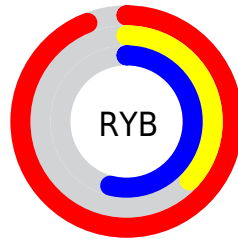
The Hex color **EF5E89** is a light color, and the websafe version is hex **FF6699**. The color can be described as light muted rose. A complement of this color would be **5EEFC4**, and the grayscale version is **8E8E8E**.

A 20% lighter version of the original color is **FF96BE**, and **B22157** is the 20% darker color. If you saturate the color by 10%, you get **EF4678**, and if you desaturate by 10%, it is **EF769A**.

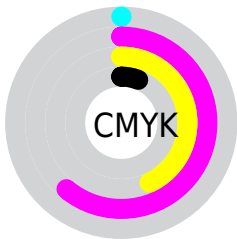
Distribution



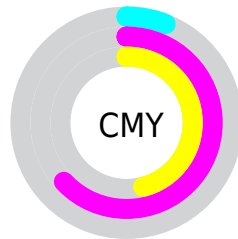
- Red (94%)
- Green (37%)
- Blue (54%)



- Red (94%)
- Yellow (37%)
- Blue (54%)



- Cyan (0%)
- Magenta (61%)
- Yellow (43%)
- Black (6%)



- Cyan (6%)
- Magenta (63%)
- Yellow (46%)

Brightness & Saturation Gradients

These gradients show how the Hex color EF5E89 changes by changing the brightness by 10 percent. The first figure shows a shift by +10% for each color and the second figure -10%.

Similar to the brightness gradients but the following saturation gradients show a change of the Hex color EF5E89 by changing the saturation by 10% instead.

 EF5E89

 EF5E89

FFFFFF

 D04170

 FF96BE

 B22157

 FFB3DA

 950040

 FFD0F6

 77002B

 FFEDFF

 5A0017

 410003

 1E0001

 000000

 EF5E89

 EF5E89

 EF4678

 EF769A

 EF2E67

 EF8EAB

 EF1657

 EFA6BB

 EF0047

 EFBECC

 EFD5DD

 EFEDEE

 EFFFFFF

Harmonies

Analogous

The Analogous color harmony consists of three colors that are next to each other on the color wheel.



D868BD



EF5E89



EA6956

Triad

The Triadic color harmony groups three colors that are evenly spaced from another and form a triangle on the color wheel.



EF5E89



6C9F34



00A2F0

Complementary

The Complementary color scheme is a pair of colors which are on the opposite of each other on the color wheel.



EF5E89



5EEFC4

Split Complementary

Split-complementary colors differ from the complementary color scheme. The scheme consists of three colors, the original color and two neighbors of the complement color.



00A8CD



EF5E89



00A763

Square

The Square scheme is like the rectangle color scheme, but the four colors are evenly spaced on the color wheel.



EF5E89



A39119



00AA99



1D94FA

Rectangle

The Rectangle color scheme consists of four colors that form a rectangle on the color wheel.



EF5E89



D97739



00AA99



00A5E7

Sweetspot

The Sweet Spot groups the original color and five complimentary colors.



EF5E89



FFD1DF



C45EEF



80636C



000000



808080

Same Dimension

The Same Dimension uses a secret algorithm to generate beautiful new colors.



EF5E89



FF457C



EF7B5E



786C6F



B80036



380011

Inverse Universe

The Inverse Universe completely reimagines the original color for something new.



EF5E89



FF457C



5ED2EF



786C6F



B80036



380011

Previews

White Background



This preview shows how the Hex color EF5E89 looks on a white background.

Color Contrast Check

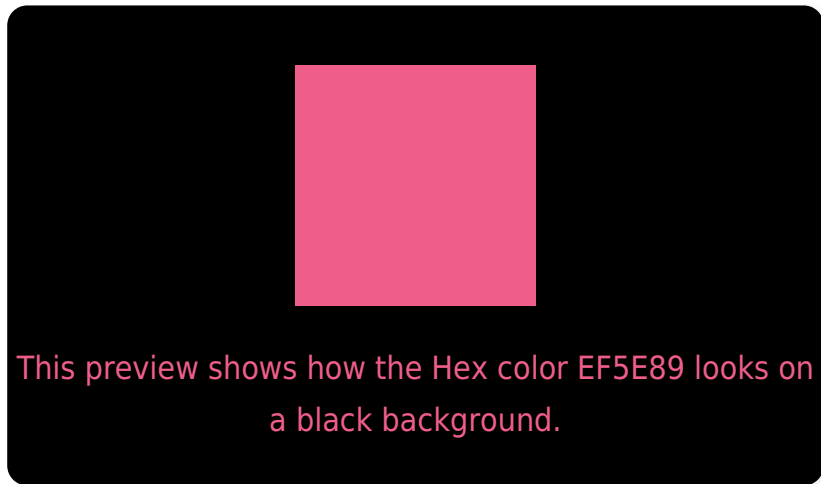
Large Text (above 18pt) WCAG AA ✓ Pass

Any Text WCAG AA ✗ Fail

Large Text (above 18pt) WCAG AAA ✗ Fail

Any Text WCAG AAA ✗ Fail

Black Background



Color Contrast Check

Large Text (above 18pt) WCAG AA ✓ Pass

Any Text WCAG AA ✓ Pass

Large Text (above 18pt) WCAG AAA ✓ Pass

Any Text WCAG AAA × Fail

If you want to check with other color combinations, try the [Color Contrast Checker](#).

Hex EF5E89 Background



This preview shows how black text looks on a background with the Hex color EF5E89.



This preview shows how white text looks on a background with the Hex color EF5E89.

Color Blindness Simulation

Color vision deficiency is a very complex topic, and I could not describe the different causes any better than Wikipedia does, so if you want to learn more, you should check out their [article about color blindness](#).

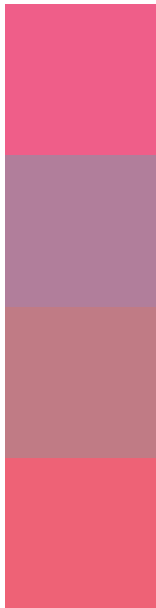
Dichromacy





Tritanopia
ED646B

Trichromacy



Original Color
EF5E89

Protanomaly
B17E9B

Deuteranomaly
C07B85

Tritanomaly
EE6276

Monochromacy



Original Color
EF5E89

Achromatopsia
8E8E8E

Achromatomaly
B17D8C

CSS Examples

Text

The CSS property to change the color of the text to Hex EF5E89 is called "color". The color property can be set on classes, ids or directly on the HTML element.

This example shows how text in the color #EF5E89 looks like.

```
.text, #text, p{  
    color:#EF5E89  
}
```

If you want to add a text shadow in that color use the text-shadow property, you can generate a text shadow directly with our [CSS Text Shadow Generator](#).

Here you see how black text with a 4 pixel #EF5E89 colored shadow looks like.

```
.shadow{ text-shadow: 4px 4px 2px #EF5E89
}
```

Border

The CSS property to change the border of an element to Hex EF5E89 is called "border". The border property can be set on classes, ids or directly on the HTML element.

This example shows the color as border, it can be applied via the CSS property "border" or "border-color".

```
.border, #border, table{ border:4px solid
#EF5E89 }
```

If only the border color should be changed use the property `border-color`.

```
.border{ border-color:#EF5E89 }
```

If you want to add a box shadow in that color use:

Here you see how a box with a 4 pixel #EF5E89 colored shadow looks like.

```
.boxshadow{ -moz-box-shadow:4px 4px 4px  
4px #EF5E89; -webkit-box-shadow:4px 4px  
4px 4px #EF5E89; box-shadow:4px 4px 4px  
4px #EF5E89 }
```

Background

The CSS property to change the background color of an element to Hex EF5E89 is called "background". The background property can be set on classes, ids or directly on the HTML element.

```
.background, #background, body{  
background:#EF5E89 }
```

If only the background color should be changed can be used:

```
.background{ background-color:#EF5E89 }
```

This example shows the color as background, it is applied via the CSS property "background".

To optimize and compress your CSS code, you can use our [online CSS compressor and optimizer](#) based on csstidy. If you want to create a linear or radial gradient as background or border, check our [CSS Gradient Generator](#).

Hey! You found this booklet interesting? Support Converting Colors with the new Membership Option!

The pro membership hides all ads, plus gives you double the colors in the color bucket, and more awesome pro features!

[Learn more, Memberships starting at \\$2.50/m!](#)

**Follow me
on Twitter!**

@ConvertingColor