

Converting Colors

Hex(EF6D7F)

Have a look what the booklet for
Hex(EF6D7F) contains.

Hex(EF6D7F)	3
<i>Conversions</i>	4
<i>Details</i>	6
<i>Harmonies</i>	11
<i>Previews</i>	23
<i>Color Blindness Simulation</i>	26
<i>CSS Examples</i>	29

Color

Hex(EF6D7F)

Conversions

Conversions Part 1

Format	Color
Hex	EF6D7F
RGB	239, 109, 127
RGB Percent	94%, 43%, 50%
CMY	0.0627, 0.5725, 0.5020
CMYK	0.00, 0.54, 0.47, 0.06
HSL	352°, 80%, 68%
HSV	352°, 54%, 94%
XYZ	44.8960, 30.8203, 23.6613
YIQ	149.9220, 71.7020, 33.1580

Conversions

Conversions Part 2

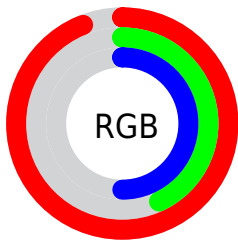
Format	Color
R _Y B	239, 109, 127
Decimal	15691135
CIE Lab	62.36, 51.66, 14.85
CIE LCh	62, 53.751, 16.042
Yxy	30.8203, 0.4518, 0.3101
Android (android.graphics.Color)	4293881215 (0xFFEF6D7F)
YUV	149.9220, -11.3005, 78.1214
Hunter-Lab	55.5160, 47.2005, 13.5914

Details

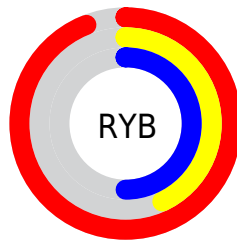
The Hex color **EF6D7F** is a light color, and the websafe version is hex **CC6666**. A complement of this color would be **6DEFDD**, and the grayscale version is **969696**.

A 20% lighter version of the original color is **FFA4B4**, and **B3364E** is the 20% darker color. If you saturate the color by 10%, you get **EF556A**, and if you desaturate by 10%, it is **EF8594**.

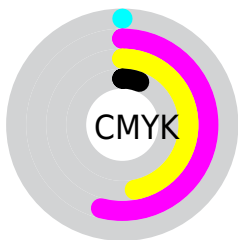
Distribution



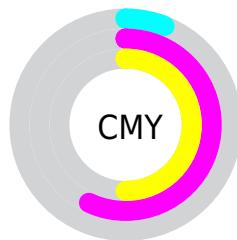
- Red (94%)
- Green (43%)
- Blue (50%)



- Red (94%)
- Yellow (43%)
- Blue (50%)



- Cyan (0%)
- Magenta (54%)
- Yellow (47%)
- Black (6%)



- Cyan (6%)
- Magenta (57%)
- Yellow (50%)

Brightness & Saturation Gradients

These gradients show how the Hex color EF6D7F changes by changing the brightness by 10 percent. The first figure shows a shift by +10% for each color and the second figure -10%.

Similar to the brightness gradients but the following saturation gradients show a change of the Hex color EF6D7F by changing the saturation by 10% instead.

 EF6D7F

 EF6D7F

FFFFFF

 D15266

 FFA4B4

 B3364E

 FFC0CF

 951638

 FFDDEB

 780022

 FFFAFF

 5B000D

 400001

 200001

 000000

 EF6D7F

 EF6D7F

 EF556A

 EF8594

 EF3D56

 EF9DA8

 EF2541

 EFB5BD

 EF0D2D

 EFCDD1

 EF0021

 EFE4E6

 EFFCFB

 EFFFFFF

Harmonies

Analogous

The Analogous color harmony consists of three colors that are next to each other on the color wheel.



E36FAF



EF6D7F



E37A54

Triad

The Triadic color harmony groups three colors that are evenly spaced from another and form a triangle on the color wheel.



EF6D7F



62A751



00A2F3

Complementary

The Complementary color scheme is a pair of colors which are on the opposite of each other on the color wheel.



EF6D7F



6DEFDD

Split Complementary

Split-complementary colors differ from the complementary color scheme. The scheme consists of three colors, the original color and two neighbors of the complement color.



00ABDA



EF6D7F



00AD7E

Square

The Square scheme is like the rectangle color scheme, but the four colors are evenly spaced on the color wheel.



EF6D7F



999C34



00AEB0



7193F3

Rectangle

The Rectangle color scheme consists of four colors that form a rectangle on the color wheel.



EF6D7F



D0863E



00AEB0



00A6ED

Sweetspot

The Sweet Spot groups the original color and five complimentary colors.



EF6D7F



FFD6DC



DB6DEF



80676B



000000



808080

Same Dimension

The Same Dimension uses a secret algorithm to generate beautiful new colors.



EF6D7F



FF5970



EF9B6D



786C6E



B80019



380008

Inverse Universe

The Inverse Universe completely reimagines the original color for something new.



EF6D7F



FF5970



6DC1EF



786C6E



B80019



380008

Previews

White Background



This preview shows how the Hex color EF6D7F looks on a white background.

Color Contrast Check

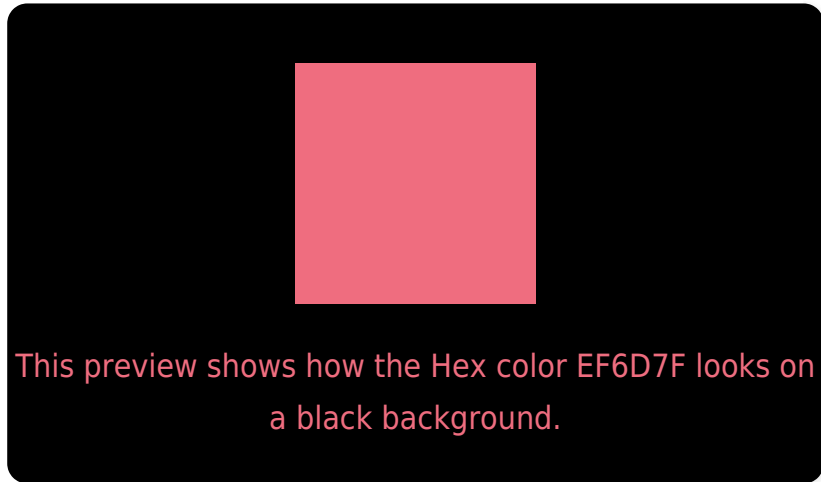
Large Text (above 18pt) WCAG AA × Fail

Any Text WCAG AA × Fail

Large Text (above 18pt) WCAG AAA × Fail

Any Text WCAG AAA × Fail

Black Background



Color Contrast Check

Large Text (above 18pt) WCAG AA ✓ Pass

Any Text WCAG AA ✓ Pass

Large Text (above 18pt) WCAG AAA ✓ Pass

Any Text WCAG AAA ✓ Pass

If you want to check with other color combinations, try the [Color Contrast Checker](#).

Hex EF6D7F Background



This preview shows how black text looks on a background with the Hex color EF6D7F.



This preview shows how white text looks on a background with the Hex color EF6D7F.

Color Blindness Simulation

Color vision deficiency is a very complex topic, and I could not describe the different causes any better than Wikipedia does, so if you want to learn more, you should check out their [article about color blindness](#).

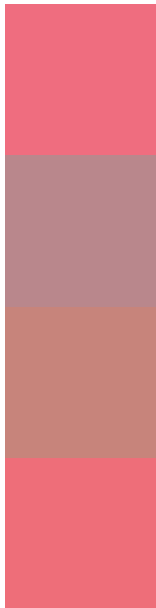
Dichromacy





Tritanopia
EE6F76

Trichromacy



Original Color
EF6D7F

Protanomaly
B9878C

Deuteranomaly
C7847B

Tritanomaly
EE6E79

Monochromacy



Original Color
EF6D7F

Achromatopsia
969696

Achromatomaly
B6878E

CSS Examples

Text

The CSS property to change the color of the text to Hex EF6D7F is called "color". The color property can be set on classes, ids or directly on the HTML element.

This example shows how text in the color #EF6D7F looks like.

```
.text, #text, p{  
    color:#EF6D7F  
}
```

If you want to add a text shadow in that color use the text-shadow property, you can generate a text shadow directly with our [CSS Text Shadow Generator](#).

Here you see how black text with a 4 pixel #EF6D7F colored shadow looks like.

```
.shadow{ text-shadow: 4px 4px 2px #EF6D7F
}
```

Border

The CSS property to change the border of an element to Hex EF6D7F is called "border". The border property can be set on classes, ids or directly on the HTML element.

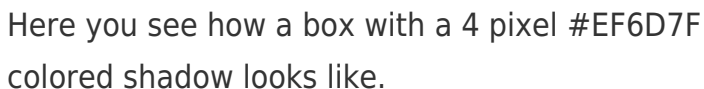
This example shows the color as border, it can be applied via the CSS property "border" or "border-color".

```
.border, #border, table{ border:4px solid
#EF6D7F }
```

If only the border color should be changed use the property `border-color`.

```
.border{ border-color:#EF6D7F }
```

If you want to add a box shadow in that color use:



Here you see how a box with a 4 pixel #EF6D7F colored shadow looks like.

```
.boxshadow{ -moz-box-shadow:4px 4px 4px  
4px #EF6D7F; -webkit-box-shadow:4px 4px  
4px 4px #EF6D7F; box-shadow:4px 4px 4px  
4px #EF6D7F }
```

Background

The CSS property to change the background color of an element to Hex EF6D7F is called "background". The background property can be set on classes, ids or directly on the HTML element.

```
.background, #background, body{  
background:#EF6D7F }
```

If only the background color should be changed can be used:

```
.background{ background-color:#EF6D7F }
```

This example shows the color as background, it is applied via the CSS property "background".

To optimize and compress your CSS code, you can use our [online CSS compressor and optimizer](#) based on csstidy. If you want to create a linear or radial gradient as background or border, check our [CSS Gradient Generator](#).

Hey! You found this booklet interesting? Support Converting Colors with the new Membership Option!

The pro membership hides all ads, plus gives you double the colors in the color bucket, and more awesome pro features!

[Learn more, Memberships starting at \\$2.50/m!](#)

**Follow me
on Twitter!**

@ConvertingColor