

# Converting Colors

Hex(EF7148)

Have a look what the booklet for  
Hex(EF7148) contains.

<b>Hex(EF7148)</b> .....	3
<b><i>Conversions</i></b> .....	4
<b><i>Details</i></b> .....	6
<b><i>Harmonies</i></b> .....	11
<b><i>Previews</i></b> .....	23
<b><i>Color Blindness Simulation</i></b> .....	26
<b><i>CSS Examples</i></b> .....	29

**Color**

**Hex(EF7148)**

# Conversions

## Conversions Part 1

Format	Color
Hex	EF7148
RGB	239, 113, 72
RGB Percent	94%, 44%, 28%
CMY	0.0627, 0.5569, 0.7176
CMYK	0.00, 0.53, 0.70, 0.06
HSL	15°, 84%, 61%
HSV	15°, 70%, 94%
XYZ	42.6714, 30.6289, 9.7938
YIQ	146.0000, 88.2570, 13.9610

# Conversions

## Conversions Part 2

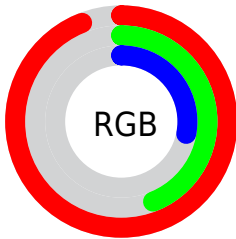
<b>Format</b>	<b>Color</b>
<a href="#">RYB</a>	<a href="#">239, 126, 72</a>
Decimal	<a href="#">15692104</a>
<a href="#">CIELab</a>	<a href="#">62.19, 45.82, 45.20</a>
<a href="#">CIElCh</a>	<a href="#">62, 64.364, 44.614</a>
<a href="#">Yxy</a>	<a href="#">30.6289, 0.5135, 0.3686</a>
Android (android.graphics.Color)	<a href="#">4293882184</a> (0xFFEF7148)
<a href="#">YUV</a>	<a href="#">146.0000, -36.4820, 81.5610</a>
<a href="#">Hunter-Lab</a>	<a href="#">55.3433, 40.7782, 28.2481</a>

# Details

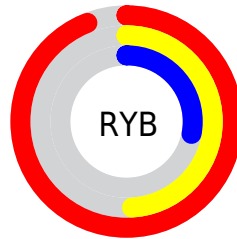
The Hex color **EF7148** is a dark color, and the websafe version is hex **CC6633**. The color can be described as middle muted orange. A complement of this color would be **48C6EF**, and the grayscale version is **929292**.

A 20% lighter version of the original color is **FFA77A**, and **B13C18** is the 20% darker color. If you saturate the color by 10%, you get **EF5F30**, and if you desaturate by 10%, it is **EF8360**.

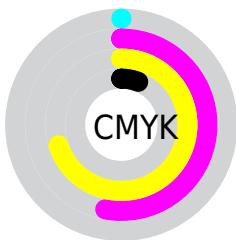
# Distribution



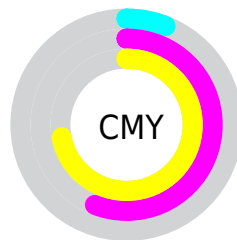
- Red (94%)
- Green (44%)
- Blue (28%)



- Red (94%)
- Yellow (49%)
- Blue (28%)



- Cyan (0%)
- Magenta (53%)
- Yellow (70%)
- Black (6%)



- Cyan (6%)
- Magenta (56%)
- Yellow (72%)

# Brightness & Saturation Gradients

These gradients show how the Hex color EF7148 changes by changing the brightness by 10 percent. The first figure shows a shift by +10% for each color and the second figure -10%.

Similar to the brightness gradients but the following saturation gradients show a change of the Hex color EF7148 by changing the saturation by 10% instead.



 EF7148

 EF7148

FFFFFF

 D05730

 FFA77A

 B13C18

 FFC394

 922000

 FFE0AF

 740000

 FFFDCB

 560000

 FFFFEE

 3B0001

 190001

 000000

 EF7148

 EF7148

 EF5F30

 EF8360

 EF4D18

 EF9578

 EF3B00

 EFA790

 EFB9A8

 EFCBC0

 EFD9D7

 EFEFEF

 EFFFFFF

# Harmonies

## Analogous

The Analogous color harmony consists of three colors that are next to each other on the color wheel.



FD5F7D



EF7148



CB891C

# Triad

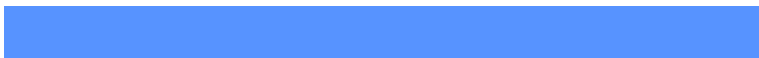
The Triadic color harmony groups three colors that are evenly spaced from another and form a triangle on the color wheel.



EF7148



00AF76



5793FF

# Complementary

The Complementary color scheme is a pair of colors which are on the opposite of each other on the color wheel.



EF7148



48C6EF

# Split Complementary

Split-complementary colors differ from the complementary color scheme. The scheme consists of three colors, the original color and two neighbors of the complement color.



00A5FF



EF7148



00B1B1

# Square

The Square scheme is like the rectangle color scheme, but the four colors are evenly spaced on the color wheel.



EF7148



56A93F



00AEE5



BC7BE8

# Rectangle

The Rectangle color scheme consists of four colors that form a rectangle on the color wheel.



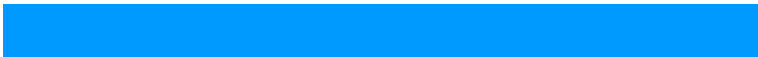
EF7148



AB970C



00AEE5



009AFF



# Sweetspot

The Sweet Spot groups the original color and five complimentary colors.



EF7148



FFD7C9



EF48C8



806760



000000



808080



# Same Dimension

The Same Dimension uses a secret algorithm to generate beautiful new colors.



EF7148



FF5D29



EFC248



786F6C



B82D00



380E00



# Inverse Universe

The Inverse Universe completely reimagines the original color for something new.



48C6EF



29CAFF



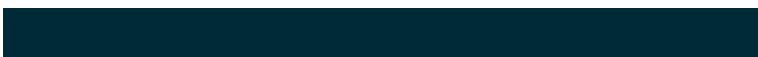
4875EF



6C7578



008BB8



002A38



# Previews

## White Background



This preview shows how the Hex color EF7148 looks on a white background.

## Color Contrast Check

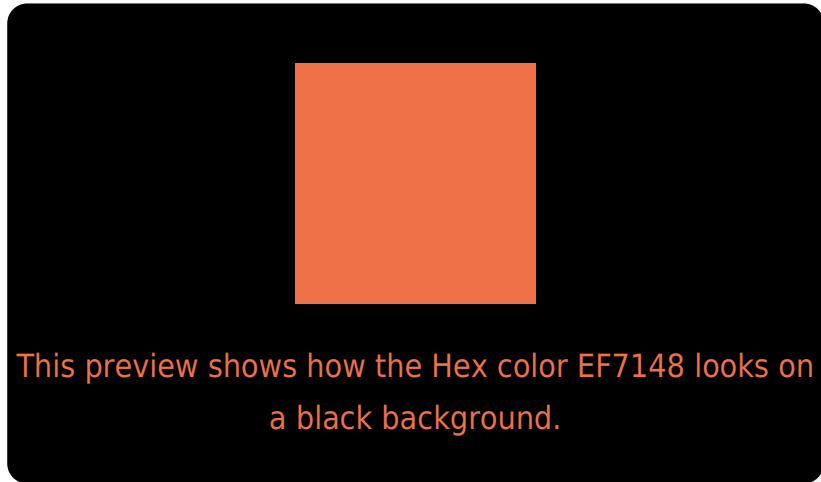
Large Text (above 18pt) WCAG AA × Fail

Any Text WCAG AA × Fail

Large Text (above 18pt) WCAG AAA × Fail

Any Text WCAG AAA × Fail

# Black Background



## Color Contrast Check

Large Text (above 18pt) WCAG AA ✓ Pass

Any Text WCAG AA ✓ Pass

Large Text (above 18pt) WCAG AAA ✓ Pass

Any Text WCAG AAA ✓ Pass

If you want to check with other color combinations, try the [Color Contrast Checker](#).



## Hex EF7148 Background



This preview shows how black text looks on a background with the Hex color EF7148.



This preview shows how white text looks on a background with the Hex color EF7148.

# Color Blindness Simulation

Color vision deficiency is a very complex topic, and I could not describe the different causes any better than Wikipedia does, so if you want to learn more, you should check out their [article about color blindness](#).


## Dichromacy



**Original Color**  
EF7148

**Protanopia**  
A69755

**Deuteranopia**  
BB8F41



**Tritanopia**  
F16C73

# Trichromacy



**Original Color**  
EF7148



**Protanomaly**  
C18950



**Deuteranomaly**  
CE8444



**Tritanomaly**  
F06E63

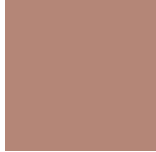
# Monochromacy



**Original Color**  
EF7148



**Achromatopsia**  
929292



**Achromatomaly**  
B48677

# CSS Examples

## Text

The CSS property to change the color of the text to Hex EF7148 is called "color". The color property can be set on classes, ids or directly on the HTML element.

This example shows how text in the color #EF7148 looks like.

```
.text, #text, p{  
    color:#EF7148  
}
```

If you want to add a text shadow in that color use the text-shadow property, you can generate a text shadow directly with our [CSS Text Shadow Generator](#).

Here you see how black text with a 4 pixel #EF7148 colored shadow looks like.

```
.shadow{ text-shadow: 4px 4px 2px #EF7148  
}
```

## Border

The CSS property to change the border of an element to Hex EF7148 is called "border". The border property can be set on classes, ids or directly on the HTML element.

This example shows the color as border, it can be applied via the CSS property "border" or "border-color".

```
.border, #border, table{ border:4px solid  
#EF7148 }
```

If only the border color should be changed use the property `border-color`.

```
.border{ border-color:#EF7148 }
```

If you want to add a box shadow in that color use:

Here you see how a box with a 4 pixel #EF7148 colored shadow looks like.

```
.boxshadow{ -moz-box-shadow:4px 4px 4px  
4px #EF7148; -webkit-box-shadow:4px 4px  
4px 4px #EF7148; box-shadow:4px 4px 4px  
4px #EF7148 }
```

# Background

The CSS property to change the background color of an element to Hex EF7148 is called "background". The background property can be set on classes, ids or directly on the HTML element.

```
.background, #background, body{  
background:#EF7148 }
```

If only the background color should be changed can be used:

```
.background{ background-color:#EF7148 }
```

This example shows the color as background, it is applied via the CSS property "background".

To optimize and compress your CSS code, you can use our [online CSS compressor and optimizer](#) based on csstidy. If you want to create a linear or radial gradient as background or border, check our [CSS Gradient Generator](#).



Hey! You found this booklet interesting? Support Converting Colors with the new Membership Option!

The pro membership hides all ads, plus gives you double the colors in the color bucket, and more awesome pro features!

**[Learn more, Memberships starting at \\$2.50/m!](#)**

**Follow me  
on Twitter!**

@ConvertingColor