

Converting Colors

Hex(EF7471)

Have a look what the booklet for
Hex(EF7471) contains.

Hex(EF7471)	3
<i>Conversions</i>	4
<i>Details</i>	6
<i>Harmonies</i>	11
<i>Previews</i>	23
<i>Color Blindness Simulation</i>	26
<i>CSS Examples</i>	29

Color

Hex(EF7471)

Conversions

Conversions Part 1

Format	Color
Hex	EF7471
RGB	239, 116, 113
RGB Percent	94%, 45%, 44%
CMY	0.0627, 0.5451, 0.5569
CMYK	0.00, 0.51, 0.53, 0.06
HSL	1°, 80%, 69%
HSV	1°, 53%, 94%
XYZ	44.8226, 32.0338, 19.4435
YIQ	152.4350, 74.2710, 25.1430

Conversions

Conversions Part 2

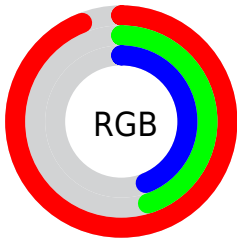
Format	Color
R_{YB}	239, 116, 113
Decimal	15692913
CIE Lab	63.37, 47.07, 24.22
CIE LCh	63, 52.936, 27.229
Yxy	32.0338, 0.4654, 0.3326
Android (android.graphics.Color)	4293882993 (0xFFEF7471)
YUV	152.4350, -19.4415, 75.9175
Hunter-Lab	56.5984, 42.3145, 19.2507

Details

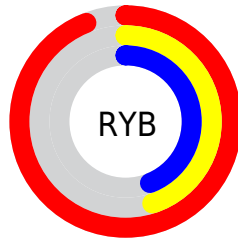
The Hex color **EF7471** is a light color, and the websafe version is hex **CC6666**. A complement of this color would be **71ECEF**, and the grayscale version is **999999**.

A 20% lighter version of the original color is **FFABA5**, and **B23F41** is the 20% darker color. If you saturate the color by 10%, you get **EF5D59**, and if you desaturate by 10%, it is **EF8B89**.

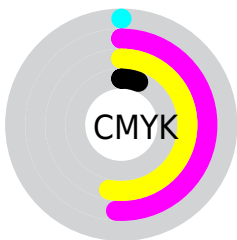
Distribution



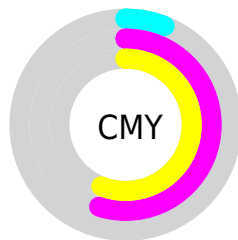
- Red (94%)
- Green (45%)
- Blue (44%)



- Red (94%)
- Yellow (45%)
- Blue (44%)



- Cyan (0%)
- Magenta (51%)
- Yellow (53%)
- Black (6%)



- Cyan (6%)
- Magenta (55%)
- Yellow (56%)

Brightness & Saturation Gradients

These gradients show how the Hex color EF7471 changes by changing the brightness by 10 percent. The first figure shows a shift by +10% for each color and the second figure -10%.

Similar to the brightness gradients but the following saturation gradients show a change of the Hex color EF7471 by changing the saturation by 10% instead.

 EF7471

 EF7471

FFFFFF

 D05959

 FFABA5

 B23F41

 FFC7C0

 95232B

 FFE4DC

 770017

 FFFFF8

 5B0000

 3F0001

 200001

 000000

 EF7471

 EF7471

 EF5D59

 EF8B89

 EF4541

 EFA3A1

 EF2E29

 EFBAB9

 EF1711

 EFD1D1

 EF0600

 EFE9E8

 EFFFFFF

Harmonies

Analogous

The Analogous color harmony consists of three colors that are next to each other on the color wheel.



EC70A0



EF7471



DB844B

Triad

The Triadic color harmony groups three colors that are evenly spaced from another and form a triangle on the color wheel.



EF7471



4BAC64



18A0F7

Complementary

The Complementary color scheme is a pair of colors which are on the opposite of each other on the color wheel.



EF7471



71ECEF

Split Complementary

Split-complementary colors differ from the complementary color scheme. The scheme consists of three colors, the original color and two neighbors of the complement color.



00ABE8



EF7471



00B093

Square

The Square scheme is like the rectangle color scheme, but the four colors are evenly spaced on the color wheel.



EF7471



89A341



00B0C3



948FED

Rectangle

The Rectangle color scheme consists of four colors that form a rectangle on the color wheel.



EF7471



C5903A



00B0C3



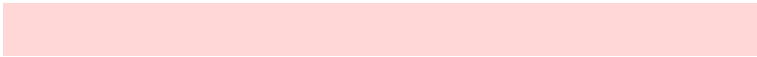
00A4F5

Sweetspot

The Sweet Spot groups the original color and five complimentary colors.



EF7471



FFD7D6



EF71ED



806867



000000



808080

Same Dimension

The Same Dimension uses a secret algorithm to generate beautiful new colors.



EF7471



FF625E



EFB271



786C6C



B80400



380100

Inverse Universe

The Inverse Universe completely reimagines the original color for something new.



71ECEF



5EFBFF



71AEEF



6C7878



00B3B8



003738

Previews

White Background



This preview shows how the Hex color EF7471 looks on a white background.

Color Contrast Check

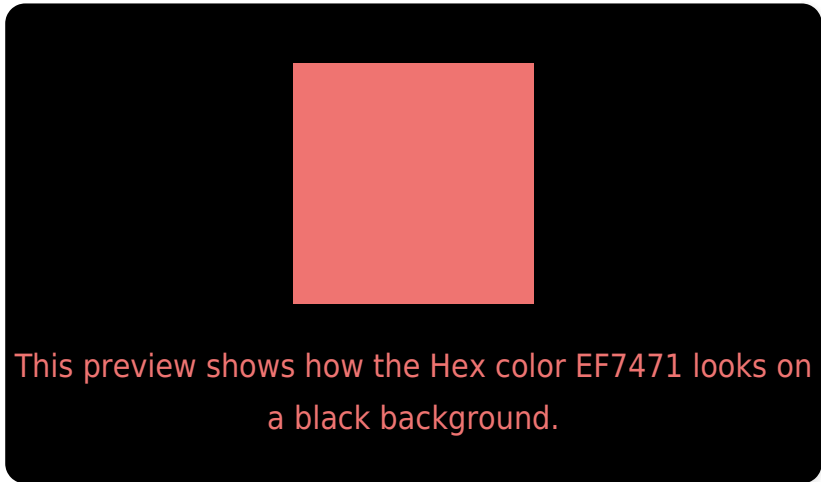
Large Text (above 18pt) WCAG AA × Fail

Any Text WCAG AA × Fail

Large Text (above 18pt) WCAG AAA × Fail

Any Text WCAG AAA × Fail

Black Background



Color Contrast Check

Large Text (above 18pt) WCAG AA ✓ Pass

Any Text WCAG AA ✓ Pass

Large Text (above 18pt) WCAG AAA ✓ Pass

Any Text WCAG AAA ✓ Pass

If you want to check with other color combinations, try the [Color Contrast Checker](#).

Hex EF7471 Background



This preview shows how black text looks on a background with the Hex color EF7471.



This preview shows how white text looks on a background with the Hex color EF7471.

Color Blindness Simulation

Color vision deficiency is a very complex topic, and I could not describe the different causes any better than Wikipedia does, so if you want to learn more, you should check out their [article about color blindness](#).

Dichromacy



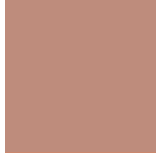


Tritanopia
F0737B

Trichromacy



Original Color
EF7471



Protanomaly
BE8C7C



Deuteranomaly
CB886E

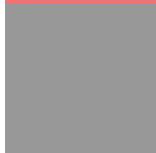


Tritanomaly
F07377

Monochromacy



Original Color
EF7471



Achromatopsia
989898



Achromatomaly
B88B8A

CSS Examples

Text

The CSS property to change the color of the text to Hex EF7471 is called "color". The color property can be set on classes, ids or directly on the HTML element.

This example shows how text in the color #EF7471 looks like.

```
.text, #text, p{  
    color:#EF7471  
}
```

If you want to add a text shadow in that color use the text-shadow property, you can generate a text shadow directly with our [CSS Text Shadow Generator](#).

Here you see how black text with a 4 pixel #EF7471 colored shadow looks like.

```
.shadow{ text-shadow: 4px 4px 2px #EF7471
}
```

Border

The CSS property to change the border of an element to Hex EF7471 is called "border". The border property can be set on classes, ids or directly on the HTML element.

This example shows the color as border, it can be applied via the CSS property "border" or "border-color".

```
.border, #border, table{ border:4px solid
#EF7471 }
```

If only the border color should be changed use the property `border-color`.

```
.border{ border-color:#EF7471 }
```

If you want to add a box shadow in that color use:

Here you see how a box with a 4 pixel #EF7471 colored shadow looks like.

```
.boxshadow{ -moz-box-shadow:4px 4px 4px  
4px #EF7471; -webkit-box-shadow:4px 4px  
4px 4px #EF7471; box-shadow:4px 4px 4px  
4px #EF7471 }
```

Background

The CSS property to change the background color of an element to Hex EF7471 is called "background". The background property can be set on classes, ids or directly on the HTML element.

```
.background, #background, body{  
background:#EF7471 }
```

If only the background color should be changed can be used:

```
.background{ background-color:#EF7471 }
```

This example shows the color as background, it is applied via the CSS property "background".

To optimize and compress your CSS code, you can use our [online CSS compressor and optimizer](#) based on csstidy. If you want to create a linear or radial gradient as background or border, check our [CSS Gradient Generator](#).

Hey! You found this booklet interesting? Support Converting Colors with the new Membership Option!

The pro membership hides all ads, plus gives you double the colors in the color bucket, and more awesome pro features!

[Learn more, Memberships starting at \\$2.50/m!](#)

**Follow me
on Twitter!**

@ConvertingColor