

Converting Colors

Hex(EF7F7A)

Have a look what the booklet for
Hex(EF7F7A) contains.

Hex(EF7F7A)	3
<i>Conversions</i>	4
<i>Details</i>	6
<i>Harmonies</i>	11
<i>Previews</i>	23
<i>Color Blindness Simulation</i>	26
<i>CSS Examples</i>	29

Color

Hex(EF7F7A)

Conversions

Conversions Part 1

Format	Color
Hex	EF7F7A
RGB	239, 127, 122
RGB Percent	94%, 50%, 48%
CMY	0.0627, 0.5020, 0.5216
CMYK	0.00, 0.47, 0.49, 0.06
HSL	3°, 79%, 71%
HSV	3°, 49%, 94%
XYZ	46.6988, 34.9346, 22.6941
YIQ	159.9180, 68.3570, 22.1890

Conversions

Conversions Part 2

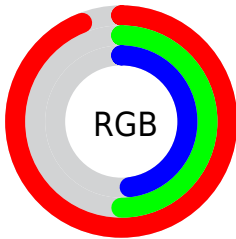
Format	Color
R_{YB}	239, 127, 122
Decimal	15695738
CIE _{Lab}	65.70, 42.40, 22.28
CIE _{LCh}	66, 47.893, 27.720
Yxy	34.9346, 0.4476, 0.3349
Android (android.graphics.Color)	4293885818 (0xFFEF7F7A)
YUV	159.9180, -18.6936, 69.3549
Hunter-Lab	59.1055, 37.5969, 18.6089

Details

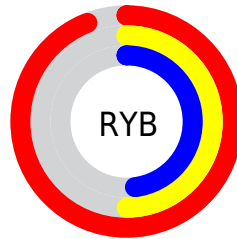
The Hex color **EF7F7A** is a light color, and the websafe version is hex **FF9999**. A complement of this color would be **7AEAEF**, and the grayscale version is **A0A0A0**.

A 20% lighter version of the original color is **FFB6AE**, and **B34B49** is the 20% darker color. If you saturate the color by 10%, you get **EF6862**, and if you desaturate by 10%, it is **EF9692**.

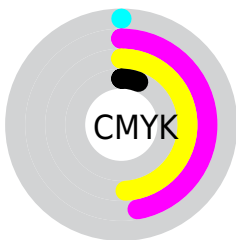
Distribution



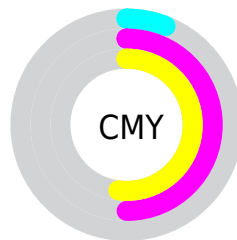
- Red (94%)
- Green (50%)
- Blue (48%)



- Red (94%)
- Yellow (50%)
- Blue (48%)



- Cyan (0%)
- Magenta (47%)
- Yellow (49%)
- Black (6%)



- Cyan (6%)
- Magenta (50%)
- Yellow (52%)

Brightness & Saturation Gradients

These gradients show how the Hex color EF7F7A changes by changing the brightness by 10 percent. The first figure shows a shift by +10% for each color and the second figure -10%.

Similar to the brightness gradients but the following saturation gradients show a change of the Hex color EF7F7A by changing the saturation by 10% instead.

 EF7F7A

 EF7F7A

FFFFFF

 D16561

 FFB6AE

 B34B49

 FFD2CA

 963133

 FFEFE6

 79141E

 5D0006

 410000

 250001

 000000

 EF7F7A

 EF7F7A

 EF6862

 EF9692

 EF514A

 EFADAA

 EF3A32

 EFC4C2

 EF231A

 EFDBDA

 EF0D02

 EFF1F2

 EF0A00

 EFFFFFF

Harmonies

Analogous

The Analogous color harmony consists of three colors that are next to each other on the color wheel.



EC7CA5



EF7F7A



DD8C58

Triad

The Triadic color harmony groups three colors that are evenly spaced from another and form a triangle on the color wheel.



EF7F7A



5BB170



48A5F5

Complementary

The Complementary color scheme is a pair of colors which are on the opposite of each other on the color wheel.



EF7F7A



7AEAEF

Split Complementary

Split-complementary colors differ from the complementary color scheme. The scheme consists of three colors, the original color and two neighbors of the complement color.



00B0E7



EF7F7A



00B59B

Square

The Square scheme is like the rectangle color scheme, but the four colors are evenly spaced on the color wheel.



EF7F7A



91A951



00B5C6



9D96EC

Rectangle

The Rectangle color scheme consists of four colors that form a rectangle on the color wheel.



EF7F7A



C8974A



00B5C6



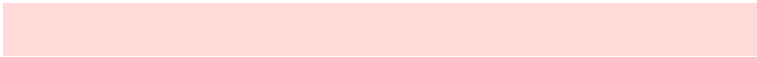
00A9F3

Sweetspot

The Sweet Spot groups the original color and five complimentary colors.



EF7F7A



FFDAD9



EF7AEB



806A69



000000



808080

Same Dimension

The Same Dimension uses a secret algorithm to generate beautiful new colors.



EF7F7A



FF6F69



EFB87A



786C6C



B80800



380200

Inverse Universe

The Inverse Universe completely reimagines the original color for something new.



7AEAEF



69F9FF



7AB1EF



6C7778



00B0B8



003638

Previews

White Background



This preview shows how the Hex color EF7F7A looks on a white background.

Color Contrast Check

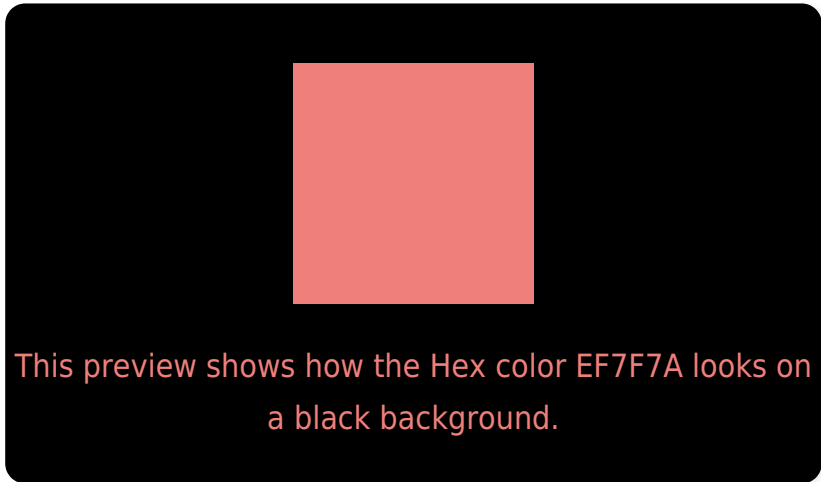
Large Text (above 18pt) WCAG AA × Fail

Any Text WCAG AA × Fail

Large Text (above 18pt) WCAG AAA × Fail

Any Text WCAG AAA × Fail

Black Background



Color Contrast Check

Large Text (above 18pt) WCAG AA ✓ Pass

Any Text WCAG AA ✓ Pass

Large Text (above 18pt) WCAG AAA ✓ Pass

Any Text WCAG AAA ✓ Pass

If you want to check with other color combinations, try the [Color Contrast Checker](#).

Hex EF7F7A Background



This preview shows how black text looks on a background with the Hex color EF7F7A.

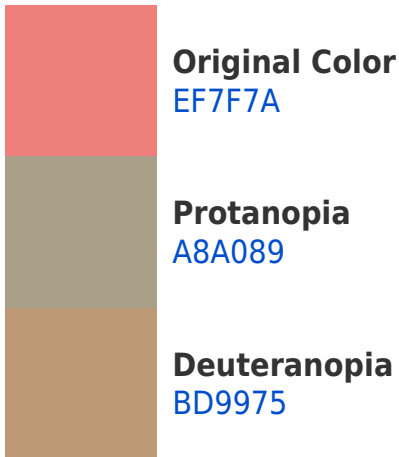


This preview shows how white text looks on a background with the Hex color EF7F7A.

Color Blindness Simulation

Color vision deficiency is a very complex topic, and I could not describe the different causes any better than Wikipedia does, so if you want to learn more, you should check out their [article about color blindness](#).

Dichromacy



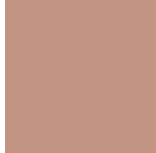


Tritanopia
F07D86

Trichromacy



Original Color
EF7F7A



Protanomaly
C29484



Deuteranomaly
CF9077



Tritanomaly
F07E82

Monochromacy



Original Color
EF7F7A



Achromatopsia
A0A0A0



Achromatomaly
BD9492

CSS Examples

Text

The CSS property to change the color of the text to Hex EF7F7A is called "color". The color property can be set on classes, ids or directly on the HTML element.

This example shows how text in the color #EF7F7A looks like.

```
.text, #text, p{  
    color:#EF7F7A  
}
```

If you want to add a text shadow in that color use the text-shadow property, you can generate a text shadow directly with our [CSS Text Shadow Generator](#).

Here you see how black text with a 4 pixel #EF7F7A colored shadow looks like.

```
.shadow{ text-shadow: 4px 4px 2px #EF7F7A
}
```

Border

The CSS property to change the border of an element to Hex EF7F7A is called "border". The border property can be set on classes, ids or directly on the HTML element.

This example shows the color as border, it can be applied via the CSS property "border" or "border-color".

```
.border, #border, table{ border:4px solid
#EF7F7A }
```

If only the border color should be changed use the property `border-color`.

```
.border{ border-color:#EF7F7A }
```

If you want to add a box shadow in that color use:

Here you see how a box with a 4 pixel #EF7F7A colored shadow looks like.

```
.boxshadow{ -moz-box-shadow:4px 4px 4px  
4px #EF7F7A; -webkit-box-shadow:4px 4px  
4px 4px #EF7F7A; box-shadow:4px 4px 4px  
4px #EF7F7A }
```

Background

The CSS property to change the background color of an element to Hex EF7F7A is called "background". The background property can be set on classes, ids or directly on the HTML element.

```
.background, #background, body{  
background:#EF7F7A }
```

If only the background color should be changed can be used:

```
.background{ background-color:#EF7F7A }
```

This example shows the color as background, it is applied via the CSS property "background".

To optimize and compress your CSS code, you can use our [online CSS compressor and optimizer](#) based on csstidy. If you want to create a linear or radial gradient as background or border, check our [CSS Gradient Generator](#).

Hey! You found this booklet interesting? Support Converting Colors with the new Membership Option!

The pro membership hides all ads, plus gives you double the colors in the color bucket, and more awesome pro features!

[Learn more, Memberships starting at \\$2.50/m!](#)

**Follow me
on Twitter!**

@ConvertingColor