

Converting Colors

Hex(EF8C7A)

Have a look what the booklet for
Hex(EF8C7A) contains.

Hex(EF8C7A)	3
<i>Conversions</i>	4
<i>Details</i>	6
<i>Harmonies</i>	11
<i>Previews</i>	23
<i>Color Blindness Simulation</i>	26
<i>CSS Examples</i>	29

Color

Hex(EF8C7A)

Conversions

Conversions Part 1

Format	Color
Hex	EF8C7A
RGB	239, 140, 122
RGB Percent	94%, 55%, 48%
CMY	0.0627, 0.4510, 0.5216
CMYK	0.00, 0.41, 0.49, 0.06
HSL	9°, 79%, 71%
HSV	9°, 49%, 94%
XYZ	48.4875, 38.5120, 23.2903
YIQ	167.5490, 64.7820, 15.3900

Conversions

Conversions Part 2

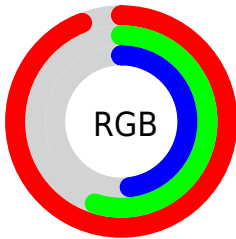
Format	Color
R _Y B	239, 143, 122
Decimal	15699066
CIE Lab	68.40, 35.74, 25.90
CIE LCh	68, 44.137, 35.932
Yxy	38.5120, 0.4396, 0.3492
Android (android.graphics.Color)	4293889146 (0xFFEF8C7A)
YUV	167.5490, -22.4557, 62.6625
Hunter-Lab	62.0581, 30.8650, 21.1891

Details

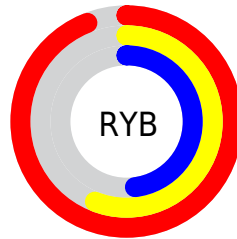
The Hex color **EF8C7A** is a light color, and the websafe version is hex **FF9999**. A complement of this color would be **7ADDEF**, and the grayscale version is **A8A8A8**.

A 20% lighter version of the original color is **FFC3AF**, and **B35849** is the 20% darker color. If you saturate the color by 10%, you get **EF7862**, and if you desaturate by 10%, it is **EFA092**.

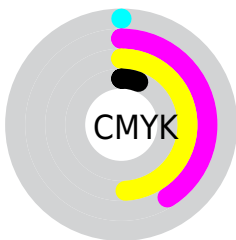
Distribution



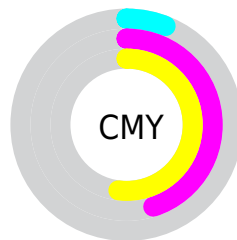
- Red (94%)
- Green (55%)
- Blue (48%)



- Red (94%)
- Yellow (56%)
- Blue (48%)



- Cyan (0%)
- Magenta (41%)
- Yellow (49%)
- Black (6%)



- Cyan (6%)
- Magenta (45%)
- Yellow (52%)

Brightness & Saturation Gradients

These gradients show how the Hex color EF8C7A changes by changing the brightness by 10 percent. The first figure shows a shift by +10% for each color and the second figure -10%.

Similar to the brightness gradients but the following saturation gradients show a change of the Hex color EF8C7A by changing the saturation by 10% instead.

 EF8C7A

 EF8C7A

FFFFFF

 D17261

 FFC3AF

 B35849

 FFDFCA

 963F32

 FFFCE6

 7A261D

 5E0A05

 420000

 2A0001

 000000

 EF8C7A

 EF8C7A

 EF7862

 EFA092

 EF644A

 EFB4AA

 EF4F32

 EFC9C2

 EF3B1A

 EFDDDA

 EF2702

 EFF1F2

 EF2500

 EFFFFFF

Harmonies

Analogous

The Analogous color harmony consists of three colors that are next to each other on the color wheel.



F286A0



EF8C7A



DA995E

Triad

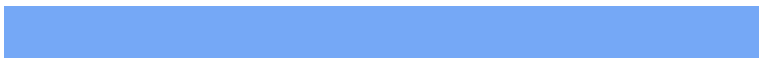
The Triadic color harmony groups three colors that are evenly spaced from another and form a triangle on the color wheel.



EF8C7A



5AB985



75A8F6

Complementary

The Complementary color scheme is a pair of colors which are on the opposite of each other on the color wheel.



EF8C7A



7ADDEF

Split Complementary

Split-complementary colors differ from the complementary color scheme. The scheme consists of three colors, the original color and two neighbors of the complement color.



00B4EF



EF8C7A



00BCAE

Square

The Square scheme is like the rectangle color scheme, but the four colors are evenly spaced on the color wheel.



EF8C7A



8EB264



00BAD4



B599E8

Rectangle

The Rectangle color scheme consists of four colors that form a rectangle on the color wheel.



EF8C7A



C4A356



00BAD4



5AADF6

Sweetspot

The Sweet Spot groups the original color and five complimentary colors.



EF8C7A



FFDFD9



EF7ADD



806C69



000000



808080

Same Dimension

The Same Dimension uses a secret algorithm to generate beautiful new colors.



EF8C7A



FF8069



EFC67A



786E6C



B81C00



380900

Inverse Universe

The Inverse Universe completely reimagines the original color for something new.



7ADDEF



69E8FF



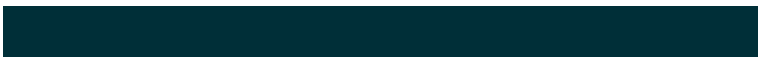
7AA3EF



6C7678



009BB8



002F38

Previews

White Background



This preview shows how the Hex color EF8C7A looks on a white background.

Color Contrast Check

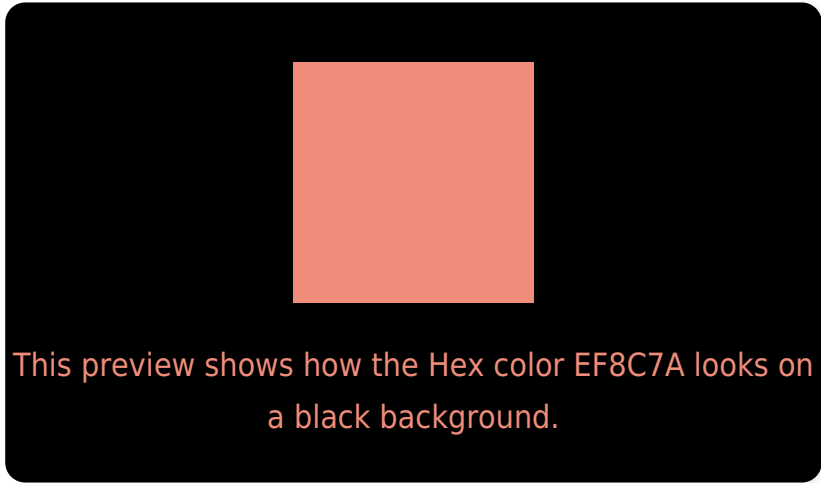
Large Text (above 18pt) WCAG AA × Fail

Any Text WCAG AA × Fail

Large Text (above 18pt) WCAG AAA × Fail

Any Text WCAG AAA × Fail

Black Background



Color Contrast Check

Large Text (above 18pt) WCAG AA ✓ Pass

Any Text WCAG AA ✓ Pass

Large Text (above 18pt) WCAG AAA ✓ Pass

Any Text WCAG AAA ✓ Pass

If you want to check with other color combinations, try the [Color Contrast Checker](#).

Hex EF8C7A Background



This preview shows how black text looks on a background with the Hex color EF8C7A.

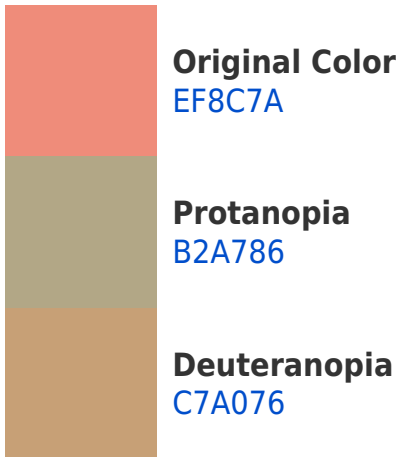


This preview shows how white text looks on a background with the Hex color EF8C7A.

Color Blindness Simulation

Color vision deficiency is a very complex topic, and I could not describe the different causes any better than Wikipedia does, so if you want to learn more, you should check out their [article about color blindness](#).

Dichromacy



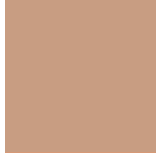


Tritanopia
F18892

Trichromacy



Original Color
EF8C7A



Protanomaly
C89D82



Deuteranomaly
D69977

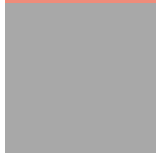


Tritanomaly
F08989

Monochromacy



Original Color
EF8C7A



Achromatopsia
A8A8A8



Achromatomaly
C29E97

CSS Examples

Text

The CSS property to change the color of the text to Hex EF8C7A is called "color". The color property can be set on classes, ids or directly on the HTML element.

This example shows how text in the color #EF8C7A looks like.

```
.text, #text, p{  
    color:#EF8C7A  
}
```

If you want to add a text shadow in that color use the text-shadow property, you can generate a text shadow directly with our [CSS Text Shadow Generator](#).

Here you see how black text with a 4 pixel #EF8C7A colored shadow looks like.

```
.shadow{ text-shadow: 4px 4px 2px #EF8C7A
}
```

Border

The CSS property to change the border of an element to Hex EF8C7A is called "border". The border property can be set on classes, ids or directly on the HTML element.

This example shows the color as border, it can be applied via the CSS property "border" or "border-color".

```
.border, #border, table{ border:4px solid
#EF8C7A }
```

If only the border color should be changed use the property border-color.

```
.border{ border-color:#EF8C7A }
```

If you want to add a box shadow in that color use:

Here you see how a box with a 4 pixel #EF8C7A colored shadow looks like.

```
.boxshadow{ -moz-box-shadow:4px 4px 4px  
4px #EF8C7A; -webkit-box-shadow:4px 4px  
4px 4px #EF8C7A; box-shadow:4px 4px 4px  
4px #EF8C7A }
```

Background

The CSS property to change the background color of an element to Hex EF8C7A is called "background". The background property can be set on classes, ids or directly on the HTML element.

```
.background, #background, body{  
background:#EF8C7A }
```

If only the background color should be changed can be used:

```
.background{ background-color:#EF8C7A }
```

This example shows the color as background, it is applied via the CSS property "background".

To optimize and compress your CSS code, you can use our [online CSS compressor and optimizer](#) based on csstidy. If you want to create a linear or radial gradient as background or border, check our [CSS Gradient Generator](#).

Hey! You found this booklet interesting? Support Converting Colors with the new Membership Option!

The pro membership hides all ads, plus gives you double the colors in the color bucket, and more awesome pro features!

[Learn more, Memberships starting at \\$2.50/m!](#)

**Follow me
on Twitter!**

@ConvertingColor