

Converting Colors

Hex(EFA4B8)

Have a look what the booklet for
Hex(EFA4B8) contains.

Hex(EFA4B8)	3
<i>Conversions</i>	4
<i>Details</i>	6
<i>Harmonies</i>	11
<i>Previews</i>	23
<i>Color Blindness Simulation</i>	26
<i>CSS Examples</i>	29

Color

Hex(EFA4B8)

Conversions

Conversions Part 1

Format	Color
Hex	EFA4B8
RGB	239, 164, 184
RGB Percent	94%, 64%, 72%
CMY	0.0627, 0.3569, 0.2784
CMYK	0.00, 0.31, 0.23, 0.06
HSL	344°, 70%, 79%
HSV	344°, 31%, 94%
XYZ	57.5238, 48.3623, 51.6504
YIQ	188.7050, 38.2800, 22.1200

Conversions

Conversions Part 2

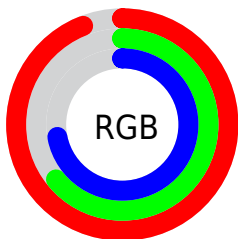
Format	Color
R _Y B	239, 164, 184
Decimal	15705272
CIE Lab	75.05, 30.47, 1.01
CIE LCh	75, 30.482, 1.895
Yxy	48.3623, 0.3651, 0.3070
Android (android.graphics.Color)	4293895352 (0xFFEFA4B8)
YUV	188.7050, -2.3196, 44.1087
Hunter-Lab	69.5430, 25.9492, 4.6447

Details

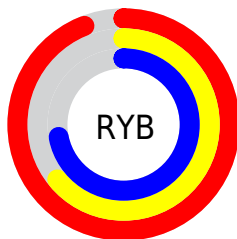
The Hex color **EFA4B8** is a light color, and the websafe version is hex **CC9999**. A complement of this color would be **A4EFDB**, and the grayscale version is **BDBDBD**.

A 20% lighter version of the original color is **FFDCF0**, and **B66F83** is the 20% darker color. If you saturate the color by 10%, you get **EF8CA6**, and if you desaturate by 10%, it is **EFBCCA**.

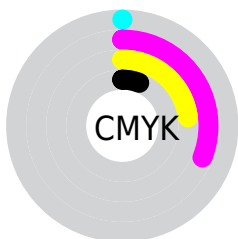
Distribution



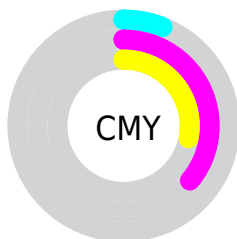
- Red (94%)
- Green (64%)
- Blue (72%)



- Red (94%)
- Yellow (64%)
- Blue (72%)



- Cyan (0%)
- Magenta (31%)
- Yellow (23%)
- Black (6%)



- Cyan (6%)
- Magenta (36%)
- Yellow (28%)

Brightness & Saturation Gradients

These gradients show how the Hex color EFA4B8 changes by changing the brightness by 10 percent. The first figure shows a shift by +10% for each color and the second figure -10%.

Similar to the brightness gradients but the following saturation gradients show a change of the Hex color EFA4B8 by changing the saturation by 10% instead.

 EFA4B8

 EFA4B8

FFFFFF

 D2899D

 FFDCF0

 B66F83

 FFF8FF

 9A566A

 7F3E52

 64263B

 4B0D25

 330010

 140000

 000000

 EFA4B8

 EFA4B8

 EF8CA6

 EFBCCA

 EF7495

 EFD4DB

 EF5C83

 EFECED

 EF4472

 EFFFFE

 EF2D60

 EFFFFF

 EF154F

 EF0040

Harmonies

Analogous

The Analogous color harmony consists of three colors that are next to each other on the color wheel.



DEA8D4



EFA4B8



F0A69C

Triad

The Triadic color harmony groups three colors that are evenly spaced from another and form a triangle on the color wheel.



EFA4B8



ADC088



72C3E9

Complementary

The Complementary color scheme is a pair of colors which are on the opposite of each other on the color wheel.



EFA4B8



A4EFDB

Split Complementary

Split-complementary colors differ from the complementary color scheme. The scheme consists of three colors, the original color and two neighbors of the complement color.



61C7D5



EFA4B8



8CC69D

Square

The Square scheme is like the rectangle color scheme, but the four colors are evenly spaced on the color wheel.



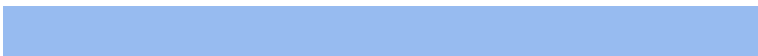
EFA4B8



CBB881



6FC8BA



97BBF0

Rectangle

The Rectangle color scheme consists of four colors that form a rectangle on the color wheel.



EFA4B8



E9AB8E



6FC8BA



69C5E4

Sweetspot

The Sweet Spot groups the original color and five complimentary colors.



EFA4B8



FFE8EE



DBA4EF



807175



000000



808080

Same Dimension

The Same Dimension uses a secret algorithm to generate beautiful new colors.



EFA4B8



FF9EB8



EFB6A4



786C6F



B80031



38000F

Inverse Universe

The Inverse Universe completely reimagines the original color for something new.



EFA4B8



FF9EB8



A4DDEF



786C6F



B80031



38000F

Previews

White Background



This preview shows how the Hex color EFA4B8 looks on a white background.

Color Contrast Check

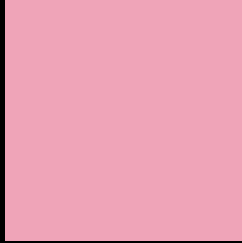
Large Text (above 18pt) WCAG AA × Fail

Any Text WCAG AA × Fail

Large Text (above 18pt) WCAG AAA × Fail

Any Text WCAG AAA × Fail

Black Background



This preview shows how the Hex color EFA4B8 looks on a black background.

Color Contrast Check

Large Text (above 18pt) WCAG AA ✓ Pass

Any Text WCAG AA ✓ Pass

Large Text (above 18pt) WCAG AAA ✓ Pass

Any Text WCAG AAA ✓ Pass

If you want to check with other color combinations, try the [Color Contrast Checker](#).

Hex EFA4B8 Background



This preview shows how black text looks on a background with the Hex color EFA4B8.



This preview shows how white text looks on a background with the Hex color EFA4B8.

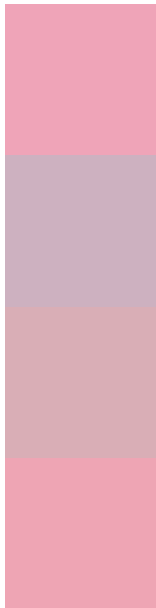
Color Blindness Simulation

Color vision deficiency is a very complex topic, and I could not describe the different causes any better than Wikipedia does, so if you want to learn more, you should check out their [article about color blindness](#).

Dichromacy



Trichromacy



Original Color
EFA4B8

Protanomaly
CDB1C0

Deuteranomaly
D9AEB6

Tritanomaly
EEA5B4

Monochromacy



Original Color
EFA4B8

Achromatopsia
BDBDBD

Achromatomaly
CFB4BB

CSS Examples

Text

The CSS property to change the color of the text to Hex EFA4B8 is called "color". The color property can be set on classes, ids or directly on the HTML element.

This example shows how text in the color #EFA4B8 looks like.

```
.text, #text, p{  
    color:#EFA4B8  
}
```

If you want to add a text shadow in that color use the text-shadow property, you can generate a text shadow directly with our [CSS Text Shadow Generator](#).

Here you see how black text with a 4 pixel #EFA4B8 colored shadow looks like.

```
.shadow{ text-shadow: 4px 4px 2px #EFA4B8
}
```

Border

The CSS property to change the border of an element to Hex EFA4B8 is called "border". The border property can be set on classes, ids or directly on the HTML element.

This example shows the color as border, it can be applied via the CSS property "border" or "border-color".

```
.border, #border, table{ border:4px solid
#EFA4B8 }
```

If only the border color should be changed use the property `border-color`.

```
.border{ border-color:#EFA4B8 }
```

If you want to add a box shadow in that color use:

Here you see how a box with a 4 pixel #EFA4B8 colored shadow looks like.

```
.boxshadow{ -moz-box-shadow:4px 4px 4px  
4px #EFA4B8; -webkit-box-shadow:4px 4px  
4px 4px #EFA4B8; box-shadow:4px 4px 4px  
4px #EFA4B8 }
```

Background

The CSS property to change the background color of an element to Hex EFA4B8 is called "background". The background property can be set on classes, ids or directly on the HTML element.

```
.background, #background, body{  
background:#EFA4B8 }
```

If only the background color should be changed can be used:

```
.background{ background-color:#EFA4B8 }
```

This example shows the color as background, it is applied via the CSS property "background".

To optimize and compress your CSS code, you can use our [online CSS compressor and optimizer](#) based on csstidy. If you want to create a linear or radial gradient as background or border, check our [CSS Gradient Generator](#).

Hey! You found this booklet interesting? Support Converting Colors with the new Membership Option!

The pro membership hides all ads, plus gives you double the colors in the color bucket, and more awesome pro features!

[Learn more, Memberships starting at \\$2.50/m!](#)

**Follow me
on Twitter!**

@ConvertingColor