

Converting Colors

Hex(EFBAB0)

Have a look what the booklet for
Hex(EFBAB0) contains.

Hex(EFBAB0)	3
<i>Conversions</i>	4
<i>Details</i>	6
<i>Harmonies</i>	11
<i>Previews</i>	23
<i>Color Blindness Simulation</i>	26
<i>CSS Examples</i>	29

Color

Hex(EFBAB0)

Conversions

Conversions Part 1

Format	Color
Hex	EFBAB0
RGB	239, 186, 176
RGB Percent	94%, 73%, 69%
CMY	0.0627, 0.2706, 0.3098
CMYK	0.00, 0.22, 0.26, 0.06
HSL	10°, 66%, 81%
HSV	10°, 26%, 94%
XYZ	60.9920, 56.6031, 48.7852
YIQ	200.7070, 34.7980, 8.1260

Conversions

Conversions Part 2

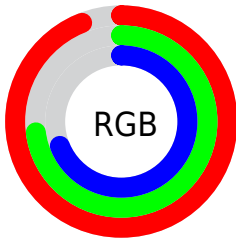
Format	Color
R _Y B	239, 188, 176
Decimal	15710896
CIE Lab	79.96, 17.67, 12.40
CIE LCh	80, 21.584, 35.067
Yxy	56.6031, 0.3666, 0.3402
Android (android.graphics.Color)	4293900976 (0xFFEFBAB0)
YUV	200.7070, -12.1806, 33.5830
Hunter-Lab	75.2350, 13.0461, 14.2187

Details

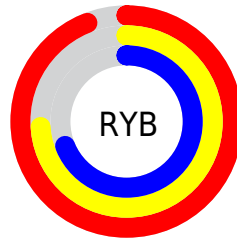
The Hex color **EFBAB0** is a light color, and the websafe version is hex **FFCCCC**. A complement of this color would be **B0E5EF**, and the grayscale version is **C9C9C9**.

A 20% lighter version of the original color is **FFF2E8**, and **B6857C** is the 20% darker color. If you saturate the color by 10%, you get **EFA698**, and if you desaturate by 10%, it is **EFCEC8**.

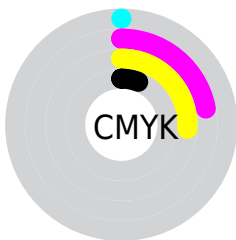
Distribution



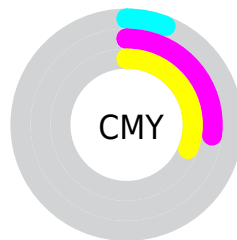
- Red (94%)
- Green (73%)
- Blue (69%)



- Red (94%)
- Yellow (74%)
- Blue (69%)



- Cyan (0%)
- Magenta (22%)
- Yellow (26%)
- Black (6%)



- Cyan (6%)
- Magenta (27%)
- Yellow (31%)

Brightness & Saturation Gradients

These gradients show how the Hex color EFBAB0 changes by changing the brightness by 10 percent. The first figure shows a shift by +10% for each color and the second figure -10%.

Similar to the brightness gradients but the following saturation gradients show a change of the Hex color EFBAB0 by changing the saturation by 10% instead.

 EFBAB0

 EFBAB0

FFFFFF

 D29F95

 FFF2E8

 B6857C

 9A6B63

 80534B

 663B34

 4C251F

 341007

 1F0001

 000000

 EFBAB0

 EFBAB0

 EFA698

 EFCEC8

 EF9280

 EFE2E0

 EF7E68

 EFF6F8

 EF6A50

 EFFFFFF

 EF5538

 EF4121

 EF2D09

 EF2600

Harmonies

Analogous

The Analogous color harmony consists of three colors that are next to each other on the color wheel.



EFB8C3



EFBAB0



E5BFA2

Triad

The Triadic color harmony groups three colors that are evenly spaced from another and form a triangle on the color wheel.



EFBAB0



A5D0B5



B4C7EE

Complementary

The Complementary color scheme is a pair of colors which are on the opposite of each other on the color wheel.



EFBAB0



B0E5EF

Split Complementary

Split-complementary colors differ from the complementary color scheme. The scheme consists of three colors, the original color and two neighbors of the complement color.



9CCDEA



EFBAB0



94D2C9

Square

The Square scheme is like the rectangle color scheme, but the four colors are evenly spaced on the color wheel.



EFBAB0



BCCCA5



90D1DD



CEC0E7

Rectangle

The Rectangle color scheme consists of four colors that form a rectangle on the color wheel.



EFBAB0



D9C49E



90D1DD



ABC9EE

Sweetspot

The Sweet Spot groups the original color and five complimentary colors.



EFBAB0



FFEEEB



EFB0E6



807573



000000



808080

Same Dimension

The Same Dimension uses a secret algorithm to generate beautiful new colors.



EFBAB0



FFBAAD



EFD9B0



786E6C



B81D00



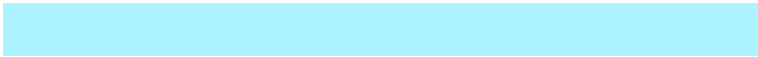
380900

Inverse Universe

The Inverse Universe completely reimagines the original color for something new.



B0E5EF



ADF2FF



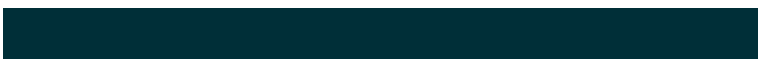
B0C6EF



6C7678



009AB8



002F38

Previews

White Background



This preview shows how the Hex color EFBAB0 looks on a white background.

Color Contrast Check

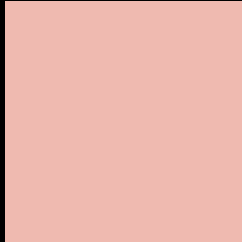
Large Text (above 18pt) WCAG AA × Fail

Any Text WCAG AA × Fail

Large Text (above 18pt) WCAG AAA × Fail

Any Text WCAG AAA × Fail

Black Background



This preview shows how the Hex color EFBAB0 looks on a black background.

Color Contrast Check

Large Text (above 18pt) WCAG AA ✓ Pass

Any Text WCAG AA ✓ Pass

Large Text (above 18pt) WCAG AAA ✓ Pass

Any Text WCAG AAA ✓ Pass

If you want to check with other color combinations, try the [Color Contrast Checker](#).

Hex EFBAB0 Background



This preview shows how black text looks on a background with the Hex color EFBAB0.

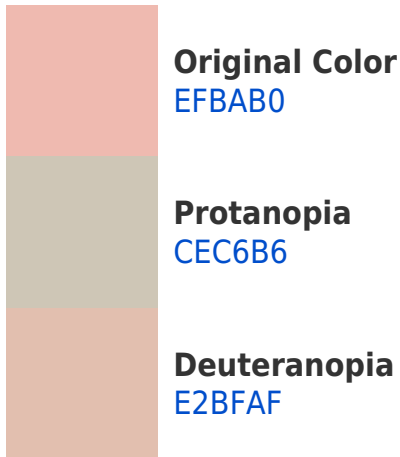


This preview shows how white text looks on a background with the Hex color EFBAB0.

Color Blindness Simulation

Color vision deficiency is a very complex topic, and I could not describe the different causes any better than Wikipedia does, so if you want to learn more, you should check out their [article about color blindness](#).

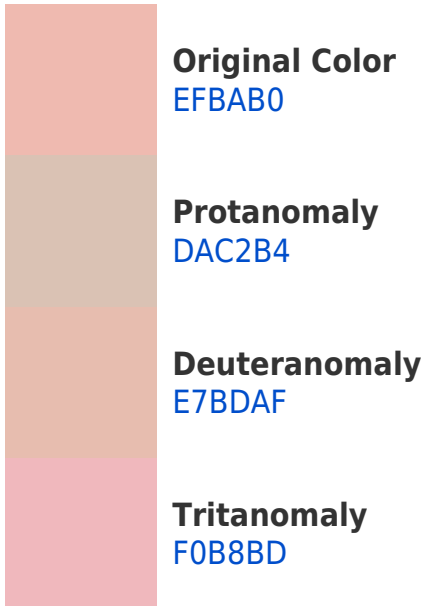
Dichromacy



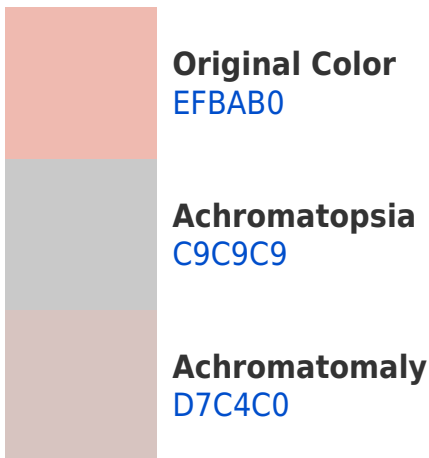


Tritanopia
F1B7C5

Trichromacy



Monochromacy



CSS Examples

Text

The CSS property to change the color of the text to Hex EFBAB0 is called "color". The color property can be set on classes, ids or directly on the HTML element.

This example shows how text in the color #EFBAB0 looks like.

```
.text, #text, p{  
    color:#EFBAB0  
}
```

If you want to add a text shadow in that color use the text-shadow property, you can generate a text shadow directly with our [CSS Text Shadow Generator](#).

Here you see how black text with a 4 pixel #EFBAB0 colored shadow looks like.

```
.shadow{ text-shadow: 4px 4px 2px #EFBAB0  
}
```

Border

The CSS property to change the border of an element to Hex EFBAB0 is called "border". The border property can be set on classes, ids or directly on the HTML element.

This example shows the color as border, it can be applied via the CSS property "border" or "border-color".

```
.border, #border, table{ border:4px solid  
#EFBAB0 }
```

If only the border color should be changed use the property `border-color`.

```
.border{ border-color:#EFBAB0 }
```

If you want to add a box shadow in that color use:

Here you see how a box with a 4 pixel #EFBAB0 colored shadow looks like.

```
.boxshadow{ -moz-box-shadow:4px 4px 4px  
4px #EFBAB0; -webkit-box-shadow:4px 4px  
4px 4px #EFBAB0; box-shadow:4px 4px 4px  
4px #EFBAB0 }
```

Background

The CSS property to change the background color of an element to Hex EFBAB0 is called "background". The background property can be set on classes, ids or directly on the HTML element.

```
.background, #background, body{  
background:#EFBAB0 }
```

If only the background color should be changed can be used:

```
.background{ background-color:#EFBAB0 }
```

This example shows the color as background, it is applied via the CSS property "background".

To optimize and compress your CSS code, you can use our [online CSS compressor and optimizer](#) based on csstidy. If you want to create a linear or radial gradient as background or border, check our [CSS Gradient Generator](#).

Hey! You found this booklet interesting? Support Converting Colors with the new Membership Option!

The pro membership hides all ads, plus gives you double the colors in the color bucket, and more awesome pro features!

[Learn more, Memberships starting at \\$2.50/m!](#)

**Follow me
on Twitter!**

@ConvertingColor