

# Converting Colors

Hex(EFD3C6)

Have a look what the booklet for  
Hex(EFD3C6) contains.

<b>Hex(EFD3C6)</b> .....	3
<i><b>Conversions</b></i> .....	4
<i><b>Details</b></i> .....	6
<i><b>Harmonies</b></i> .....	11
<i><b>Previews</b></i> .....	23
<i><b>Color Blindness Simulation</b></i> .....	26
<i><b>CSS Examples</b></i> .....	29

# **Color**

**Hex(EFD3C6)**

# Conversions

## Conversions Part 1

Format	Color
Hex	EFD3C6
RGB	239, 211, 198
RGB Percent	94%, 83%, 78%
CMY	0.0627, 0.1725, 0.2235
CMYK	0.00, 0.12, 0.17, 0.06
HSL	19°, 56%, 86%
HSV	19°, 17%, 94%
XYZ	69.0839, 69.0165, 63.1065
YIQ	217.8900, 20.8610, 1.8930

# Conversions

## Conversions Part 2

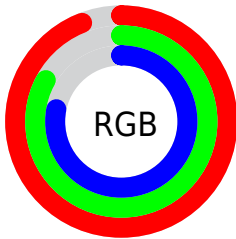
Format	Color
R <sub>Y</sub> B	239, 217, 198
Decimal	15717318
CIE Lab	86.51, 7.69, 9.99
CIE LCh	87, 12.612, 52.417
Yxy	69.0165, 0.3433, 0.3430
Android (android.graphics.Color)	4293907398 (0xFFEFD3C6)
YUV	217.8900, -9.8058, 18.5135
Hunter-Lab	83.0762, 3.0526, 13.1153

# Details

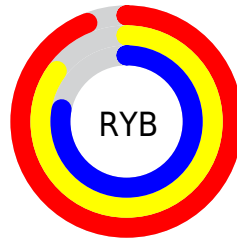
The Hex color **EFD3C6** is a light color, and the websafe version is hex **FFCCCC**. A complement of this color would be **C6E2EF**, and the grayscale version is **DADADA**.

A 20% lighter version of the original color is **FFFFFF**, and **B79C90** is the 20% darker color. If you saturate the color by 10%, you get **EFC3AE**, and if you desaturate by 10%, it is **EFE3DE**.

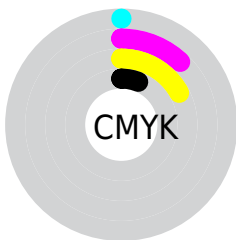
# Distribution



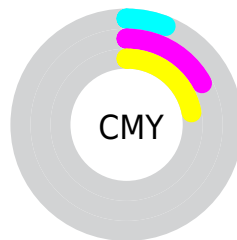
- Red (94%)
- Green (83%)
- Blue (78%)



- Red (94%)
- Yellow (85%)
- Blue (78%)



- Cyan (0%)
- Magenta (12%)
- Yellow (17%)
- Black (6%)



- Cyan (6%)
- Magenta (17%)
- Yellow (22%)

# Brightness & Saturation Gradients

These gradients show how the Hex color EFD3C6 changes by changing the brightness by 10 percent. The first figure shows a shift by +10% for each color and the second figure -10%.

Similar to the brightness gradients but the following saturation gradients show a change of the Hex color EFD3C6 by changing the saturation by 10% instead.



 EFD3C6


 EFD3C6

FFFFFF

 D3B7AB

 B79C90

 9C8277

 81695E

 685146

 4F3A30

 38241B

 231000

 000000

 EFD3C6

 EFD3C6

 EFC3AE

 EFE3DE

 EFB296

 EFF4F6

 EFA27E

 EFFFFFF

 EF9266

 EF814E

 EF7137

 EF611F

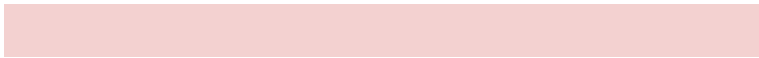
 EF5007

 EF4C00

# Harmonies

## Analogous

The Analogous color harmony consists of three colors that are next to each other on the color wheel.



F3D1D0



EFD3C6



E6D7C1

# Triad

The Triadic color harmony groups three colors that are evenly spaced from another and form a triangle on the color wheel.



EFD3C6



C0E0D5



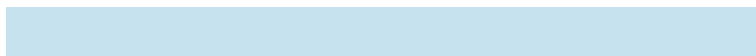
D7D6EE

# Complementary

The Complementary color scheme is a pair of colors which are on the opposite of each other on the color wheel.



EFD3C6



C6E2EF

# Split Complementary

Split-complementary colors differ from the complementary color scheme. The scheme consists of three colors, the original color and two neighbors of the complement color.



C9DAF0



EFD3C6



BBE0E1

# Square

The Square scheme is like the rectangle color scheme, but the four colors are evenly spaced on the color wheel.



EFD3C6



CBDECA



BEDEEB



E5D3E7

# Rectangle

The Rectangle color scheme consists of four colors that form a rectangle on the color wheel.



EFD3C6



DDD9C1



BEDEEB



D2D8F0

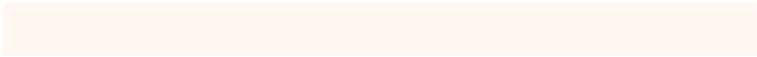


# Sweetspot

The Sweet Spot groups the original color and five complimentary colors.



EFD3C6



FFF6F2



EFC6E2



807A78



000000



808080

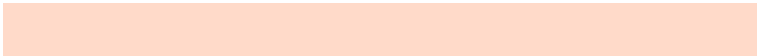


# Same Dimension

The Same Dimension uses a secret algorithm to generate beautiful new colors.



EFD3C6



FFDAC9



EFE7C6



78706C



B83A00



381200

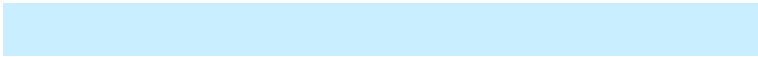


# Inverse Universe

The Inverse Universe completely reimagines the original color for something new.



C6E2EF



C9EEFF



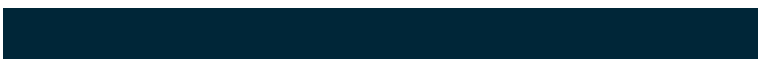
C6CEEF



6C7478



007DB8

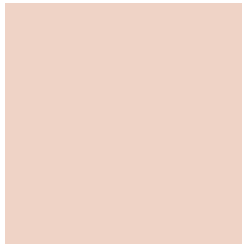


002638



# Previews

## White Background



This preview shows how the Hex color EFD3C6 looks on a white background.

## Color Contrast Check

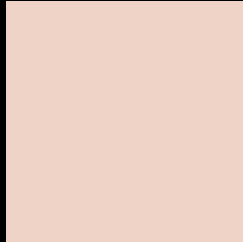
Large Text (above 18pt) WCAG AA × Fail

Any Text WCAG AA × Fail

Large Text (above 18pt) WCAG AAA × Fail

Any Text WCAG AAA × Fail

# Black Background



This preview shows how the Hex color EFD3C6 looks on a black background.

## Color Contrast Check

Large Text (above 18pt) WCAG AA ✓ Pass

Any Text WCAG AA ✓ Pass

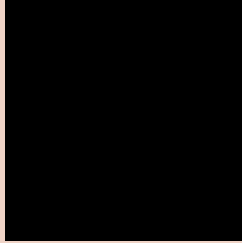
Large Text (above 18pt) WCAG AAA ✓ Pass

Any Text WCAG AAA ✓ Pass

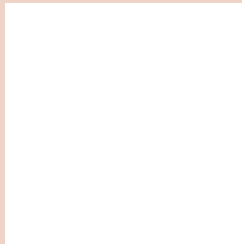
If you want to check with other color combinations, try the [Color Contrast Checker](#).



## Hex EFD3C6 Background



This preview shows how black text looks on a background with the Hex color EFD3C6.

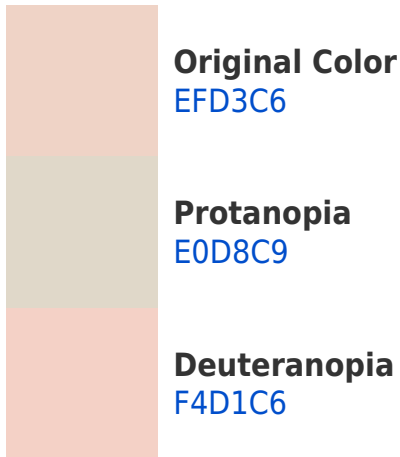


This preview shows how white text looks on a background with the Hex color EFD3C6.

# Color Blindness Simulation

Color vision deficiency is a very complex topic, and I could not describe the different causes any better than Wikipedia does, so if you want to learn more, you should check out their [article about color blindness](#).

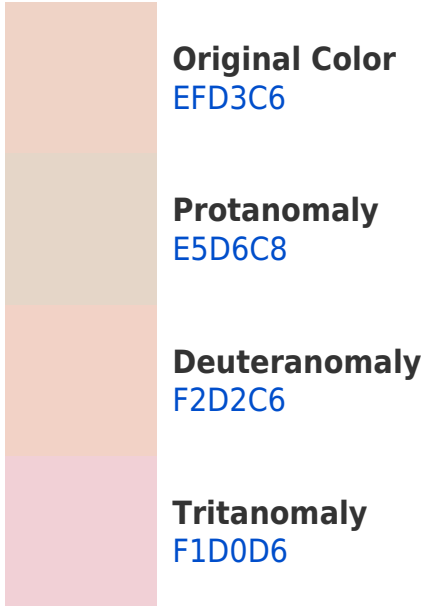
## Dichromacy



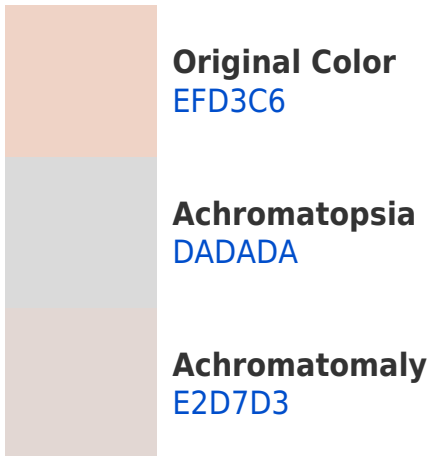


**Tritanopia**  
F2CFDF

# Trichromacy



# Monochromacy



# CSS Examples

## Text

The CSS property to change the color of the text to Hex EFD3C6 is called "color". The color property can be set on classes, ids or directly on the HTML element.

This example shows how text in the color #EFD3C6 looks like.

```
.text, #text, p{  
    color:#EFD3C6  
}
```

If you want to add a text shadow in that color use the text-shadow property, you can generate a text shadow directly with our [CSS Text Shadow Generator](#).

Here you see how black text with a 4 pixel #EFD3C6 colored shadow looks like.

```
.shadow{ text-shadow: 4px 4px 2px #EFD3C6
}
```

## Border

The CSS property to change the border of an element to Hex EFD3C6 is called "border". The border property can be set on classes, ids or directly on the HTML element.

This example shows the color as border, it can be applied via the CSS property "border" or "border-color".

```
.border, #border, table{ border:4px solid
#EFD3C6 }
```

If only the border color should be changed use the property `border-color`.

```
.border{ border-color:#EFD3C6 }
```

If you want to add a box shadow in that color use:

Here you see how a box with a 4 pixel #EFD3C6 colored shadow looks like.

```
.boxshadow{ -moz-box-shadow:4px 4px 4px  
4px #EFD3C6; -webkit-box-shadow:4px 4px  
4px 4px #EFD3C6; box-shadow:4px 4px 4px  
4px #EFD3C6 }
```

# Background

The CSS property to change the background color of an element to Hex EFD3C6 is called "background". The background property can be set on classes, ids or directly on the HTML element.

```
.background, #background, body{  
background:#EFD3C6 }
```

If only the background color should be changed can be used:

```
.background{ background-color:#EFD3C6 }
```

This example shows the color as background, it is applied via the CSS property "background".

To optimize and compress your CSS code, you can use our [online CSS compressor and optimizer](#) based on csstidy. If you want to create a linear or radial gradient as background or border, check our [CSS Gradient Generator](#).



Hey! You found this booklet interesting? Support Converting Colors with the new Membership Option!

The pro membership hides all ads, plus gives you double the colors in the color bucket, and more awesome pro features!

**[Learn more, Memberships starting at \\$2.50/m!](#)**

**Follow me  
on Twitter!**

@ConvertingColor