

# Converting Colors

Hex(EFD9CC)

Have a look what the booklet for  
Hex(EFD9CC) contains.

<b>Hex(EFD9CC)</b> .....	3
<i><b>Conversions</b></i> .....	4
<i><b>Details</b></i> .....	6
<i><b>Harmonies</b></i> .....	11
<i><b>Previews</b></i> .....	23
<i><b>Color Blindness Simulation</b></i> .....	26
<i><b>CSS Examples</b></i> .....	29

# **Color**

**Hex(EFD9CC)**

# Conversions

## Conversions Part 1

Format	Color
Hex	EFD9CC
RGB	239, 217, 204
RGB Percent	94%, 85%, 80%
CMY	0.0627, 0.1490, 0.2000
CMYK	0.00, 0.09, 0.15, 0.06
HSL	22°, 52%, 87%
HSV	22°, 15%, 94%
XYZ	71.3085, 72.3361, 67.3306
YIQ	222.0960, 17.2850, 0.6210

# Conversions

## Conversions Part 2

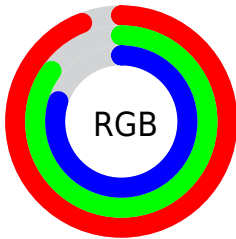
Format	Color
R <sub>Y</sub> B	239, 225, 204
Decimal	15718860
CIE Lab	88.13, 5.49, 9.14
CIE LCh	88, 10.666, 59.004
Yxy	72.3361, 0.3380, 0.3429
Android (android.graphics.Color)	4293908940 (0xFFEFD9CC)
YUV	222.0960, -8.9213, 14.8248
Hunter-Lab	85.0506, 0.8203, 12.5983

# Details

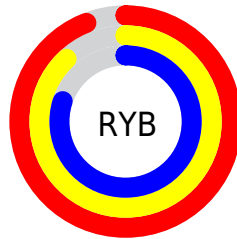
The Hex color **EFD9CC** is a light color, and the websafe version is hex **CCCCCC**. A complement of this color would be **CCE2EF**, and the grayscale version is **DEDEDE**.

A 20% lighter version of the original color is **FFFFFF**, and **B7A296** is the 20% darker color. If you saturate the color by 10%, you get **EFCAB4**, and if you desaturate by 10%, it is **EFE8E4**.

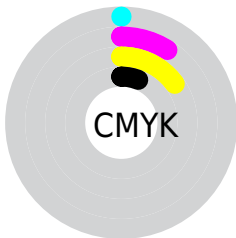
# Distribution



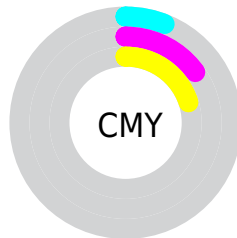
- Red (94%)
- Green (85%)
- Blue (80%)



- Red (94%)
- Yellow (88%)
- Blue (80%)



- Cyan (0%)
- Magenta (9%)
- Yellow (15%)
- Black (6%)



- Cyan (6%)
- Magenta (15%)
- Yellow (20%)

# Brightness & Saturation Gradients

These gradients show how the Hex color EFD9CC changes by changing the brightness by 10 percent. The first figure shows a shift by +10% for each color and the second figure -10%.

Similar to the brightness gradients but the following saturation gradients show a change of the Hex color EFD9CC by changing the saturation by 10% instead.



 EFD9CC

 EFD9CC

FFFFFF

 D3BDB1

 B7A296

 9C887C

 826F63

 68564B

 503F35

 38291F

 231508

 000000

 EFD9CC

 EFD9CC

 EFCAB4

 EFE8E4

 EFBB9C

 EFF7FC

 EFAC84

 EFFFFF

 EF9D6C

 EF8E55

 EF7F3D

 EF7025

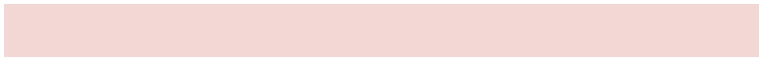
 EF610D

 EF5900

# Harmonies

## Analogous

The Analogous color harmony consists of three colors that are next to each other on the color wheel.



F3D7D4



EFD9CC



E6DCC9

# Triad

The Triadic color harmony groups three colors that are evenly spaced from another and form a triangle on the color wheel.



EFD9CC



C7E3DC



DFDBEF

# Complementary

The Complementary color scheme is a pair of colors which are on the opposite of each other on the color wheel.



EFD9CC



CCE2EF

# Split Complementary

Split-complementary colors differ from the complementary color scheme. The scheme consists of three colors, the original color and two neighbors of the complement color.



D2DEF1



EFD9CC



C4E3E6

# Square

The Square scheme is like the rectangle color scheme, but the four colors are evenly spaced on the color wheel.



EFD9CC



CFE2D2



C8E1EE



EAD8E8

# Rectangle

The Rectangle color scheme consists of four colors that form a rectangle on the color wheel.



EFD9CC



DFDECA



C8E1EE



DBDCF0



# Sweetspot

The Sweet Spot groups the original color and five complimentary colors.



EFD9CC



FFF9F5



EFCCE2



807B79



000000



808080

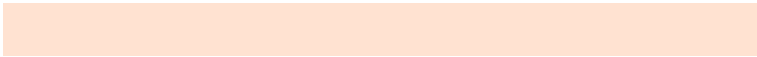


# Same Dimension

The Same Dimension uses a secret algorithm to generate beautiful new colors.



EFD9CC



FFE2D1



EFEACC



78706C



B84400



381500

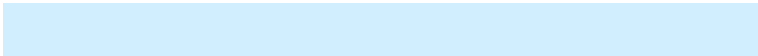


# Inverse Universe

The Inverse Universe completely reimagines the original color for something new.



CCE2EF



D1EEFF



CCD1EF



6C7378



0073B8

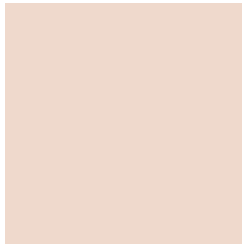


002338



# Previews

## White Background



This preview shows how the Hex color EFD9CC looks on a white background.

## Color Contrast Check

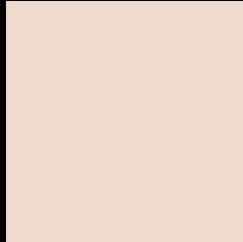
Large Text (above 18pt) WCAG AA × Fail

Any Text WCAG AA × Fail

Large Text (above 18pt) WCAG AAA × Fail

Any Text WCAG AAA × Fail

# Black Background



This preview shows how the Hex color EFD9CC looks on a black background.

## Color Contrast Check

Large Text (above 18pt) WCAG AA ✓ Pass

Any Text WCAG AA ✓ Pass

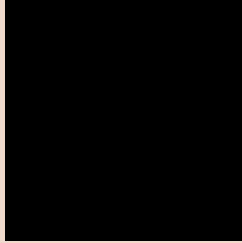
Large Text (above 18pt) WCAG AAA ✓ Pass

Any Text WCAG AAA ✓ Pass

If you want to check with other color combinations, try the [Color Contrast Checker](#).



## Hex EFD9CC Background



This preview shows how black text looks on a background with the Hex color EFD9CC.

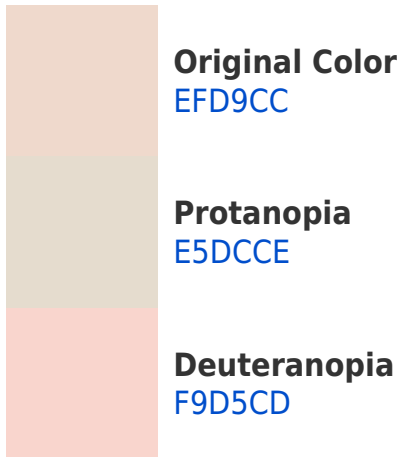


This preview shows how white text looks on a background with the Hex color EFD9CC.

# Color Blindness Simulation

Color vision deficiency is a very complex topic, and I could not describe the different causes any better than Wikipedia does, so if you want to learn more, you should check out their [article about color blindness](#).

## Dichromacy





**Tritanopia**  
F2D5E6

# Trichromacy



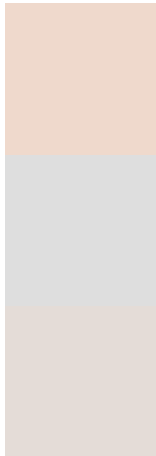
**Original Color**  
EFD9CC

**Protanomaly**  
E9DBCD

**Deuteranomaly**  
F5D6CD

**Tritanomaly**  
F1D6DD

# Monochromacy



**Original Color**  
EFD9CC

**Achromatopsia**  
DEDEDE

**Achromatomaly**  
E4DCD7

# CSS Examples

## Text

The CSS property to change the color of the text to Hex EFD9CC is called "color". The color property can be set on classes, ids or directly on the HTML element.

This example shows how text in the color #EFD9CC looks like.

```
.text, #text, p{  
    color:#EFD9CC  
}
```

If you want to add a text shadow in that color use the text-shadow property, you can generate a text shadow directly with our [CSS Text Shadow Generator](#).

Here you see how black text with a 4 pixel #EFD9CC colored shadow looks like.

```
.shadow{ text-shadow: 4px 4px 2px #EFD9CC }  
}
```

## Border

The CSS property to change the border of an element to Hex EFD9CC is called "border". The border property can be set on classes, ids or directly on the HTML element.

This example shows the color as border, it can be applied via the CSS property "border" or "border-color".

```
.border, #border, table{ border:4px solid #EFD9CC }  
}
```

If only the border color should be changed use the property `border-color`.

```
.border{ border-color:#EFD9CC }
```

If you want to add a box shadow in that color use:

Here you see how a box with a 4 pixel #EFD9CC colored shadow looks like.

```
.boxshadow{ -moz-box-shadow:4px 4px 4px  
4px #EFD9CC; -webkit-box-shadow:4px 4px  
4px 4px #EFD9CC; box-shadow:4px 4px 4px  
4px #EFD9CC }
```

# Background

The CSS property to change the background color of an element to Hex EFD9CC is called "background". The background property can be set on classes, ids or directly on the HTML element.

```
.background, #background, body{  
background:#EFD9CC }
```

If only the background color should be changed can be used:

```
.background{ background-color:#EFD9CC }
```

This example shows the color as background, it is applied via the CSS property "background".

To optimize and compress your CSS code, you can use our [online CSS compressor and optimizer](#) based on csstidy. If you want to create a linear or radial gradient as background or border, check our [CSS Gradient Generator](#).



Hey! You found this booklet interesting? Support Converting Colors with the new Membership Option!

The pro membership hides all ads, plus gives you double the colors in the color bucket, and more awesome pro features!

**[Learn more, Memberships starting at \\$2.50/m!](#)**

**Follow me  
on Twitter!**

@ConvertingColor