

Converting Colors

Hex(EFDCD7)

Have a look what the booklet for
Hex(EFDCD7) contains.

Hex(EFDCD7)	3
<i>Conversions</i>	4
<i>Details</i>	6
<i>Harmonies</i>	11
<i>Previews</i>	23
<i>Color Blindness Simulation</i>	26
<i>CSS Examples</i>	29

Color

Hex(EFDCD7)

Conversions

Conversions Part 1

Format	Color
Hex	EFDCD7
RGB	239, 220, 215
RGB Percent	94%, 86%, 84%
CMY	0.0627, 0.1373, 0.1569
CMYK	0.00, 0.08, 0.10, 0.06
HSL	13°, 43%, 89%
HSV	13°, 10%, 94%
XYZ	73.4555, 74.4434, 74.7875
YIQ	225.1110, 12.9290, 2.4730

Conversions

Conversions Part 2

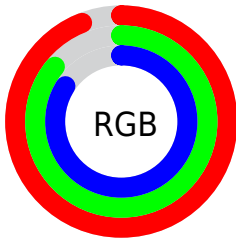
Format	Color
R _Y B	239, 221, 215
Decimal	15719639
CIE Lab	89.13, 5.69, 4.80
CIE LCh	89, 7.444, 40.139
Yxy	74.4434, 0.3299, 0.3343
Android (android.graphics.Color)	4293909719 (0xFFEFD7)
YUV	225.1110, -4.9847, 12.1807
Hunter-Lab	86.2806, 0.9761, 9.0042

Details

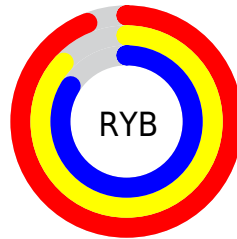
The Hex color **EFDCD7** is a light color, and the websafe version is hex **CCCCCC**. A complement of this color would be **D7EAEF**, and the grayscale version is **E1E1E1**.

A 20% lighter version of the original color is **FFFFFF**, and **B7A5A0** is the 20% darker color. If you saturate the color by 10%, you get **EFC9BF**, and if you desaturate by 10%, it is **EFEFEF**.

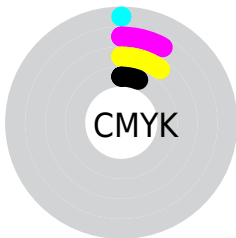
Distribution



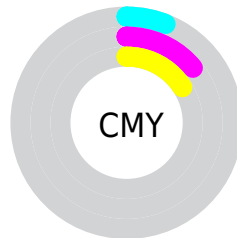
- Red (94%)
- Green (86%)
- Blue (84%)



- Red (94%)
- Yellow (87%)
- Blue (84%)



- Cyan (0%)
- Magenta (8%)
- Yellow (10%)
- Black (6%)



- Cyan (6%)
- Magenta (14%)
- Yellow (16%)

Brightness & Saturation Gradients

These gradients show how the Hex color EFDCD7 changes by changing the brightness by 10 percent. The first figure shows a shift by +10% for each color and the second figure -10%.

Similar to the brightness gradients but the following saturation gradients show a change of the Hex color EFDCD7 by changing the saturation by 10% instead.

 EFDCD7

FFFFFF

 EFDCD7

 D3C0BB

 B7A5A0

 9C8B86

 82716D

 695955

 50413D

 392B28

 231713

 050000

 EFD7D7

 EFD7D7

 EFC9BF

 EFEFEF

 EFB6A7

 EFFFFFFF

 EFA38F

 EF9077

 EF7D5F

 EF6A48

 EF5830

 EF4518

 EF3200

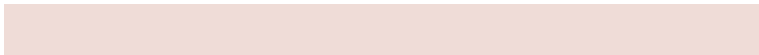
Harmonies

Analogous

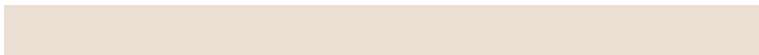
The Analogous color harmony consists of three colors that are next to each other on the color wheel.



EFDBDE



EFDCD7



EBDED3

Triad

The Triadic color harmony groups three colors that are evenly spaced from another and form a triangle on the color wheel.



EFDCD7



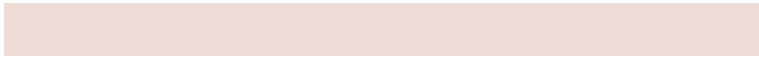
D4E4DB



DCE0EE

Complementary

The Complementary color scheme is a pair of colors which are on the opposite of each other on the color wheel.



EFDCD7



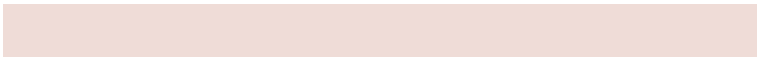
D7EAEF

Split Complementary

Split-complementary colors differ from the complementary color scheme. The scheme consists of three colors, the original color and two neighbors of the complement color.



D4E2ED



EFDCD7



CFE4E2

Square

The Square scheme is like the rectangle color scheme, but the four colors are evenly spaced on the color wheel.



EFDCD7



DBE2D5



CFE4E9



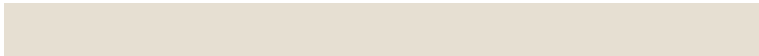
E4DDEB

Rectangle

The Rectangle color scheme consists of four colors that form a rectangle on the color wheel.



EFDCD7



E6DFD2



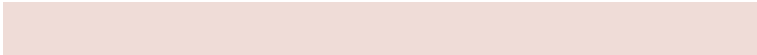
CFE4E9



D9E0EE

Sweetspot

The Sweet Spot groups the original color and five complimentary colors.



EFD7CD7



FFF9F7



EFD7EA



807B7A



000000



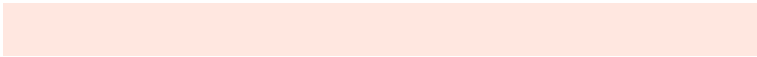
808080

Same Dimension

The Same Dimension uses a secret algorithm to generate beautiful new colors.



EFDCD7



FFE7E0



EFE8D7



786E6C



B82600



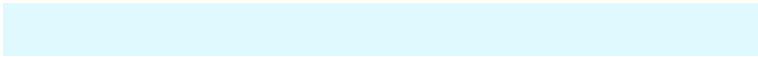
380C00

Inverse Universe

The Inverse Universe completely reimagines the original color for something new.



D7EAEF



E0F9FF



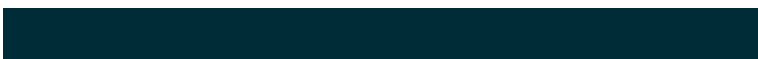
D7DEEF



6C7578



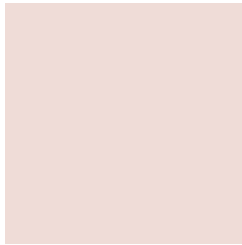
0091B8



002C38

Previews

White Background



This preview shows how the Hex color EFDCD7 looks on a white background.

Color Contrast Check

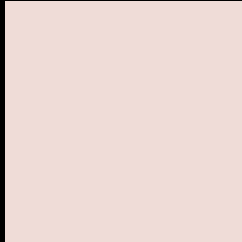
Large Text (above 18pt) WCAG AA × Fail

Any Text WCAG AA × Fail

Large Text (above 18pt) WCAG AAA × Fail

Any Text WCAG AAA × Fail

Black Background



This preview shows how the Hex color EFDCD7 looks on a black background.

Color Contrast Check

Large Text (above 18pt) WCAG AA ✓ Pass

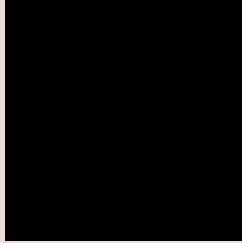
Any Text WCAG AA ✓ Pass

Large Text (above 18pt) WCAG AAA ✓ Pass

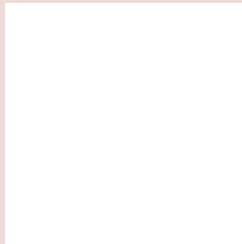
Any Text WCAG AAA ✓ Pass

If you want to check with other color combinations, try the [Color Contrast Checker](#).

Hex EFDCD7 Background



This preview shows how black text looks on a background with the Hex color EFDCD7.

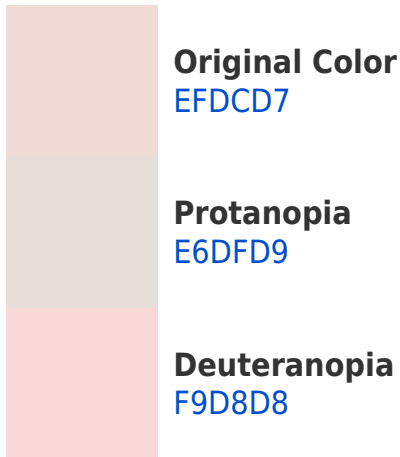


This preview shows how white text looks on a background with the Hex color EFDCD7.

Color Blindness Simulation

Color vision deficiency is a very complex topic, and I could not describe the different causes any better than Wikipedia does, so if you want to learn more, you should check out their [article about color blindness](#).

Dichromacy





Tritanopia
F2D9EA

Trichromacy



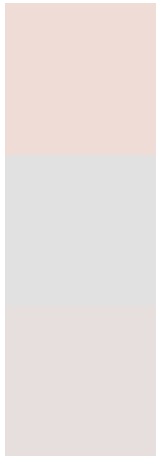
Original Color
EFDCD7

Protanomaly
E9DED8

Deuteranomaly
F5D9D8

Tritanomaly
F1DAE3

Monochromacy



Original Color
EFDCD7

Achromatopsia
E1E1E1

Achromatomaly
E6DFDD

CSS Examples

Text

The CSS property to change the color of the text to Hex EFDCD7 is called "color". The color property can be set on classes, ids or directly on the HTML element.

This example shows how text in the color #EFDCD7 looks like.

```
.text, #text, p{  
    color:#EFDCD7  
}
```

If you want to add a text shadow in that color use the text-shadow property, you can generate a text shadow directly with our [CSS Text Shadow Generator](#).

Here you see how black text with a 4 pixel #EFDCD7 colored shadow looks like.

```
.shadow{ text-shadow: 4px 4px 2px #EFDCD7
}
```

Border

The CSS property to change the border of an element to Hex EFDCD7 is called "border". The border property can be set on classes, ids or directly on the HTML element.

This example shows the color as border, it can be applied via the CSS property "border" or "border-color".

```
.border, #border, table{ border:4px solid
#EFDCD7 }
```

If only the border color should be changed use the property `border-color`.

```
.border{ border-color:#EFDCD7 }
```

If you want to add a box shadow in that color use:

Here you see how a box with a 4 pixel #EFDCD7 colored shadow looks like.

```
.boxshadow{ -moz-box-shadow:4px 4px 4px  
4px #EFDCD7; -webkit-box-shadow:4px 4px  
4px 4px #EFDCD7; box-shadow:4px 4px 4px  
4px #EFDCD7 }
```

Background

The CSS property to change the background color of an element to Hex EFDCD7 is called "background". The background property can be set on classes, ids or directly on the HTML element.

```
.background, #background, body{  
background:#EFDCD7 }
```

If only the background color should be changed can be used:

```
.background{ background-color:#EFDCD7 }
```

This example shows the color as background, it is applied via the CSS property "background".

To optimize and compress your CSS code, you can use our [online CSS compressor and optimizer](#) based on csstidy. If you want to create a linear or radial gradient as background or border, check our [CSS Gradient Generator](#).

Hey! You found this booklet interesting? Support Converting Colors with the new Membership Option!

The pro membership hides all ads, plus gives you double the colors in the color bucket, and more awesome pro features!

[Learn more, Memberships starting at \\$2.50/m!](#)

**Follow me
on Twitter!**

@ConvertingColor