

Converting Colors

Hex(EFDCE2)

Have a look what the booklet for
Hex(EFDCE2) contains.

Hex(EFDCE2)	3
<i>Conversions</i>	4
<i>Details</i>	6
<i>Harmonies</i>	11
<i>Previews</i>	23
<i>Color Blindness Simulation</i>	26
<i>CSS Examples</i>	29

Color

Hex(EFDCE2)

Conversions

Conversions Part 1

Format	Color
Hex	EFDCE2
RGB	239, 220, 226
RGB Percent	94%, 86%, 89%
CMY	0.0627, 0.1373, 0.1137
CMYK	0.00, 0.08, 0.05, 0.06
HSL	341°, 37%, 90%
HSV	341°, 8%, 94%
XYZ	74.9173, 75.0281, 82.4848
YIQ	226.3650, 9.3980, 5.8940

Conversions

Conversions Part 2

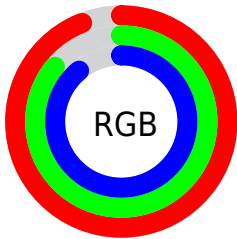
Format	Color
R _Y B	239, 220, 226
Decimal	15719650
CIE Lab	89.41, 7.53, -0.59
CIE LCh	89, 7.554, 355.555
Yxy	75.0281, 0.3223, 0.3228
Android (android.graphics.Color)	4293909730 (0xFFEFDCE2)
YUV	226.3650, -0.1799, 11.0809
Hunter-Lab	86.6188, 2.8032, 4.1728

Details

The Hex color **EFDCE2** is a light color, and the websafe version is hex **CCCCCC**. A complement of this color would be **DCEFE9**, and the grayscale version is **E2E2E2**.

A 20% lighter version of the original color is **FFFFFF**, and **B7A5AB** is the 20% darker color. If you saturate the color by 10%, you get **EFC4D2**, and if you desaturate by 10%, it is **EFF4F2**.

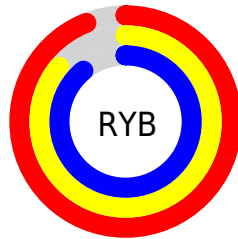
Distribution



Red (94%)

Green (86%)

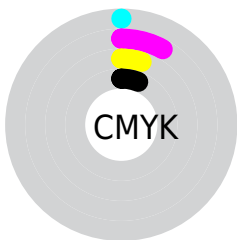
Blue (89%)



Red (94%)

Yellow (86%)

Blue (89%)

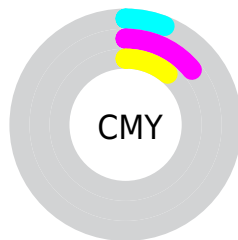


Cyan (0%)

Magenta (8%)

Yellow (5%)

Black (6%)



Cyan (6%)

Magenta (14%)

Yellow (11%)

Brightness & Saturation Gradients

These gradients show how the Hex color EFDCE2 changes by changing the brightness by 10 percent. The first figure shows a shift by +10% for each color and the second figure -10%.

Similar to the brightness gradients but the following saturation gradients show a change of the Hex color EFDCE2 by changing the saturation by 10% instead.

 EFDCE2

FFFFFF

 EFDCE2

 D3C0C6

 B7A5AB

 9C8B90

 827177

 69595E

 514146

 392B30

 24171B

 0D0000

 EFDCE2

 EFDCE2

 EFC4D2

 EFF4F2

 EFACCC1

 EFFFFFF

 EF94B1

 EF7CA1

 EF6590

 EF4D80

 EF3570

 EF1D5F

 EF054F

Harmonies

Analogous

The Analogous color harmony consists of three colors that are next to each other on the color wheel.



E9DDE9



EFDCE2



F1DCDB

Triad

The Triadic color harmony groups three colors that are evenly spaced from another and form a triangle on the color wheel.



EFDCE2



E0E2D4



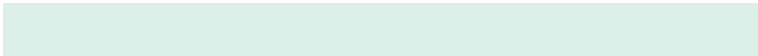
D2E4EC

Complementary

The Complementary color scheme is a pair of colors which are on the opposite of each other on the color wheel.



EFDCE2



DCEFE9

Split Complementary

Split-complementary colors differ from the complementary color scheme. The scheme consists of three colors, the original color and two neighbors of the complement color.



CFE5E7



EFDCE2



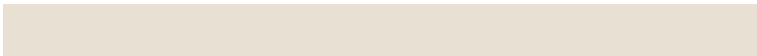
D8E4D8

Square

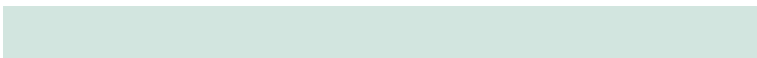
The Square scheme is like the rectangle color scheme, but the four colors are evenly spaced on the color wheel.



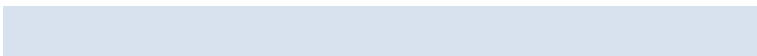
EFDCE2



E8E0D2



D2E5DF



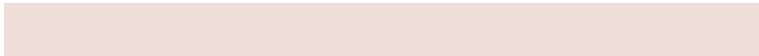
D8E2EF

Rectangle

The Rectangle color scheme consists of four colors that form a rectangle on the color wheel.



EFDCE2



EFDDD7



D2E5DF



D0E4EB

Sweetspot

The Sweet Spot groups the original color and five complimentary colors.



EFDCE2



FFFAFC



E9DCEF



807D7E



000000



808080

Same Dimension

The Same Dimension uses a secret algorithm to generate beautiful new colors.



EFDCE2



FFE6EE



EFD FDC



786C70



B8003A



380012

Inverse Universe

The Inverse Universe completely reimagines the original color for something new.



EFDCE2



FFE6EE



DCECEF



786C70



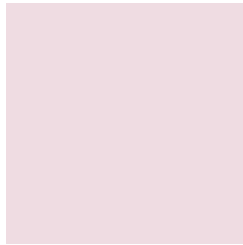
B8003A



380012

Previews

White Background



This preview shows how the Hex color EFDCE2 looks on a white background.

Color Contrast Check

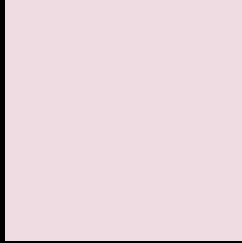
Large Text (above 18pt) WCAG AA × Fail

Any Text WCAG AA × Fail

Large Text (above 18pt) WCAG AAA × Fail

Any Text WCAG AAA × Fail

Black Background



This preview shows how the Hex color EFDCE2 looks on a black background.

Color Contrast Check

Large Text (above 18pt) WCAG AA ✓ Pass

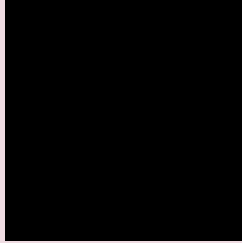
Any Text WCAG AA ✓ Pass

Large Text (above 18pt) WCAG AAA ✓ Pass

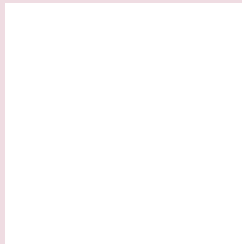
Any Text WCAG AAA ✓ Pass

If you want to check with other color combinations, try the [Color Contrast Checker](#).

Hex EFDCE2 Background



This preview shows how black text looks on a background with the Hex color EFDCE2.

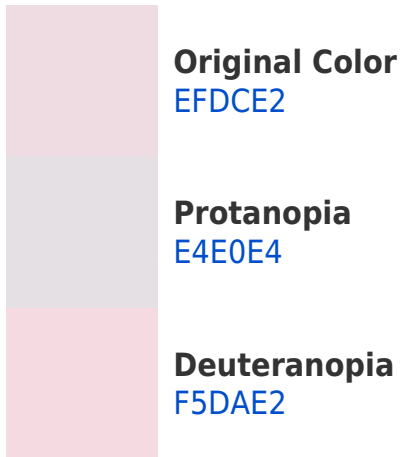


This preview shows how white text looks on a background with the Hex color EFDCE2.

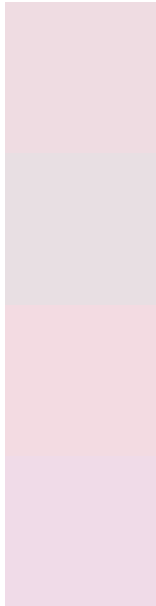
Color Blindness Simulation

Color vision deficiency is a very complex topic, and I could not describe the different causes any better than Wikipedia does, so if you want to learn more, you should check out their [article about color blindness](#).

Dichromacy



Trichromacy



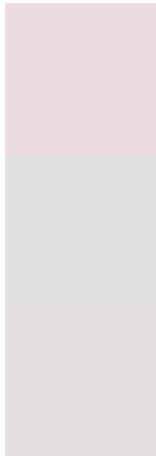
Original Color
EFDCE2

Protanomaly
E8DFE3

Deuteranomaly
F3DBE2

Tritanomaly
F0DBE8

Monochromacy



Original Color
EFDCE2

Achromatopsia
E2E2E2

Achromatomaly
E7E0E2

CSS Examples

Text

The CSS property to change the color of the text to Hex EFDCE2 is called "color". The color property can be set on classes, ids or directly on the HTML element.

This example shows how text in the color #EFDCE2 looks like.

```
.text, #text, p{  
    color:#EFDCE2  
}
```

If you want to add a text shadow in that color use the text-shadow property, you can generate a text shadow directly with our [CSS Text Shadow Generator](#).

Here you see how black text with a 4 pixel #EFDCE2 colored shadow looks like.

```
.shadow{ text-shadow: 4px 4px 2px #EFDCE2
}
```

Border

The CSS property to change the border of an element to Hex EFDCE2 is called "border". The border property can be set on classes, ids or directly on the HTML element.

This example shows the color as border, it can be applied via the CSS property "border" or "border-color".

```
.border, #border, table{ border:4px solid
#EFDCE2 }
```

If only the border color should be changed use the property `border-color`.

```
.border{ border-color:#EFDCE2 }
```

If you want to add a box shadow in that color use:

Here you see how a box with a 4 pixel #EFDCE2 colored shadow looks like.

```
.boxshadow{ -moz-box-shadow:4px 4px 4px  
4px #EFDCE2; -webkit-box-shadow:4px 4px  
4px 4px #EFDCE2; box-shadow:4px 4px 4px  
4px #EFDCE2 }
```

Background

The CSS property to change the background color of an element to Hex EFDCE2 is called "background". The background property can be set on classes, ids or directly on the HTML element.

```
.background, #background, body{  
background:#EFDCE2 }
```

If only the background color should be changed can be used:

```
.background{ background-color:#EFDCE2 }
```

This example shows the color as background, it is applied via the CSS property "background".

To optimize and compress your CSS code, you can use our [online CSS compressor and optimizer](#) based on csstidy. If you want to create a linear or radial gradient as background or border, check our [CSS Gradient Generator](#).

Hey! You found this booklet interesting? Support Converting Colors with the new Membership Option!

The pro membership hides all ads, plus gives you double the colors in the color bucket, and more awesome pro features!

[Learn more, Memberships starting at \\$2.50/m!](#)

**Follow me
on Twitter!**

@ConvertingColor