

Converting Colors

Hex(EFDEDB)

Have a look what the booklet for
Hex(EFDEDB) contains.

Hex(EFDEDB)	3
<i>Conversions</i>	4
<i>Details</i>	6
<i>Harmonies</i>	11
<i>Previews</i>	23
<i>Color Blindness Simulation</i>	26
<i>CSS Examples</i>	29

Color

Hex(EFDEDB)

Conversions

Conversions Part 1

Format	Color
Hex	EFDEDB
RGB	239, 222, 219
RGB Percent	94%, 87%, 86%
CMY	0.0627, 0.1294, 0.1412
CMYK	0.00, 0.07, 0.08, 0.06
HSL	9°, 38%, 90%
HSV	9°, 8%, 94%
XYZ	74.5041, 75.7077, 77.7041
YIQ	226.7410, 11.0950, 2.6710

Conversions

Conversions Part 2

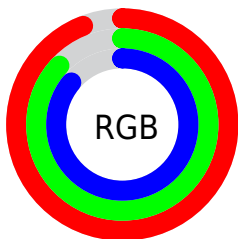
Format	Color
R _Y B	239, 223, 219
Decimal	15720155
CIE Lab	89.72, 5.31, 3.55
CIE LCh	90, 6.392, 33.784
Yxy	75.7077, 0.3269, 0.3322
Android (android.graphics.Color)	4293910235 (0xFFEFDEDB)
YUV	226.7410, -3.8163, 10.7511
Hunter-Lab	87.0102, 0.5760, 7.9584

Details

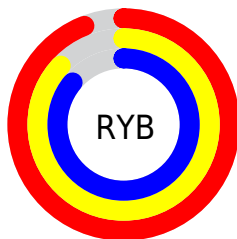
The Hex color **EFDEDB** is a light color, and the websafe version is hex **CCCCCC**. A complement of this color would be **DBECEF**, and the grayscale version is **E3E3E3**.

A 20% lighter version of the original color is **FFFFFF**, and **B7A7A4** is the 20% darker color. If you saturate the color by 10%, you get **EFCAC3**, and if you desaturate by 10%, it is **EFF2F3**.

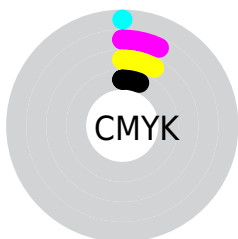
Distribution



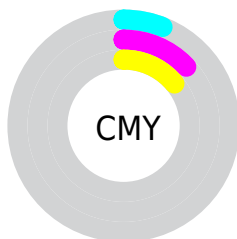
- Red (94%)
- Green (87%)
- Blue (86%)



- Red (94%)
- Yellow (87%)
- Blue (86%)



- Cyan (0%)
- Magenta (7%)
- Yellow (8%)
- Black (6%)



- Cyan (6%)
- Magenta (13%)
- Yellow (14%)

Brightness & Saturation Gradients

These gradients show how the Hex color EFDEDB changes by changing the brightness by 10 percent. The first figure shows a shift by +10% for each color and the second figure -10%.

Similar to the brightness gradients but the following saturation gradients show a change of the Hex color EFDEDB by changing the saturation by 10% instead.

 EFDEDB

FFFFFF

 EFDEDB

 D3C2BF

 B7A7A4

 9C8D8A

 827370

 695A58

 504341

 392D2B

 241816

 0B0000

 EFDEDB

 EFDEDB

 EFCAC3

 EFF2F3

 EFB5AB

 EFFFFFF

 EFA193

 EF8D7B

 EF7863

 EF644C

 EF5034

 EF3B1C

 EF2704

Harmonies

Analogous

The Analogous color harmony consists of three colors that are next to each other on the color wheel.



EFDEE1



EFDEDB



ECDFD7

Triad

The Triadic color harmony groups three colors that are evenly spaced from another and form a triangle on the color wheel.



EFDEDB



D8E5DC



DCE2EE

Complementary

The Complementary color scheme is a pair of colors which are on the opposite of each other on the color wheel.



EFDEDB



DBECEF

Split Complementary

Split-complementary colors differ from the complementary color scheme. The scheme consists of three colors, the original color and two neighbors of the complement color.



D6E4EC



EFDEDB



D4E5E2

Square

The Square scheme is like the rectangle color scheme, but the four colors are evenly spaced on the color wheel.



EFDEDB



DFE3D7



D3E5E8



E4E0EC

Rectangle

The Rectangle color scheme consists of four colors that form a rectangle on the color wheel.



EFDEDB



E8E1D6



D3E5E8



DAE2EE

Sweetspot

The Sweet Spot groups the original color and five complimentary colors.



EFDEDB



FFF8F7



EFDBEC



807B7A



000000



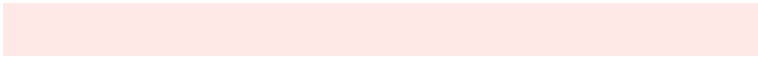
808080

Same Dimension

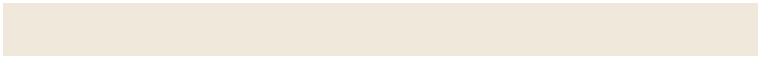
The Same Dimension uses a secret algorithm to generate beautiful new colors.



EFDEDB



FFE9E6



EFE8DB



786E6C



B81C00



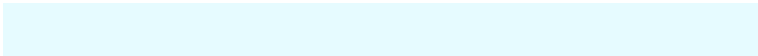
380800

Inverse Universe

The Inverse Universe completely reimagines the original color for something new.



DBECEF



E6FBFF



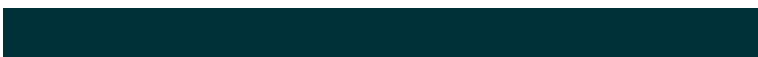
DBE2EF



6C7678



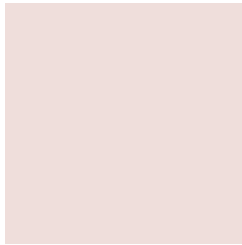
009CB8



003038

Previews

White Background



This preview shows how the Hex color EFDEDB looks on a white background.

Color Contrast Check

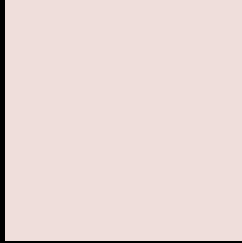
Large Text (above 18pt) WCAG AA × Fail

Any Text WCAG AA × Fail

Large Text (above 18pt) WCAG AAA × Fail

Any Text WCAG AAA × Fail

Black Background



This preview shows how the Hex color EFDEDB looks on a black background.

Color Contrast Check

Large Text (above 18pt) WCAG AA ✓ Pass

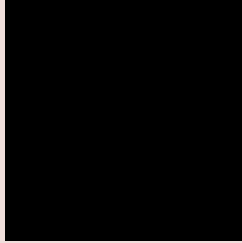
Any Text WCAG AA ✓ Pass

Large Text (above 18pt) WCAG AAA ✓ Pass

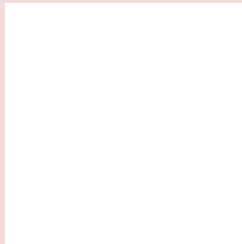
Any Text WCAG AAA ✓ Pass

If you want to check with other color combinations, try the [Color Contrast Checker](#).

Hex EFDEDB Background



This preview shows how black text looks on a background with the Hex color EFDEDB.

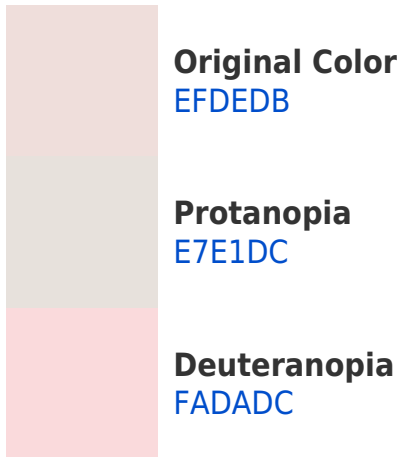


This preview shows how white text looks on a background with the Hex color EFDEDB.

Color Blindness Simulation

Color vision deficiency is a very complex topic, and I could not describe the different causes any better than Wikipedia does, so if you want to learn more, you should check out their [article about color blindness](#).

Dichromacy





Tritanopia
F1DBED

Trichromacy



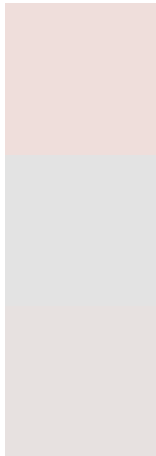
Original Color
EFDEDB

Protanomaly
EAE0DC

Deuteranomaly
F6DBDC

Tritanomaly
F0DCE6

Monochromacy



Original Color
EFDEDB

Achromatopsia
E3E3E3

Achromatomaly
E7E1E0

CSS Examples

Text

The CSS property to change the color of the text to Hex EFDEDB is called "color". The color property can be set on classes, ids or directly on the HTML element.

This example shows how text in the color #EFDEDB looks like.

```
.text, #text, p{  
  color:#EFDEDB  
}
```

If you want to add a text shadow in that color use the text-shadow property, you can generate a text shadow directly with our [CSS Text Shadow Generator](#).

Here you see how black text with a 4 pixel #EFDEDB colored shadow looks like.

```
.shadow{ text-shadow: 4px 4px 2px #EFDEDB
}
```

Border

The CSS property to change the border of an element to Hex EFDEDB is called "border". The border property can be set on classes, ids or directly on the HTML element.

This example shows the color as border, it can be applied via the CSS property "border" or "border-color".

```
.border, #border, table{ border:4px solid
#EFDEDB }
```

If only the border color should be changed use the property `border-color`.

```
.border{ border-color:#EFDEDB }
```

If you want to add a box shadow in that color use:

Here you see how a box with a 4 pixel #EFDEDB colored shadow looks like.

```
.boxshadow{ -moz-box-shadow:4px 4px 4px  
4px #EFDEDB; -webkit-box-shadow:4px 4px  
4px 4px #EFDEDB; box-shadow:4px 4px 4px  
4px #EFDEDB }
```

Background

The CSS property to change the background color of an element to Hex EFDEDB is called "background". The background property can be set on classes, ids or directly on the HTML element.

```
.background, #background, body{  
background:#EFDEDB }
```

If only the background color should be changed can be used:

```
.background{ background-color:#EFDEDB }
```

This example shows the color as background, it is applied via the CSS property "background".

To optimize and compress your CSS code, you can use our [online CSS compressor and optimizer](#) based on csstidy. If you want to create a linear or radial gradient as background or border, check our [CSS Gradient Generator](#).

Hey! You found this booklet interesting? Support Converting Colors with the new Membership Option!

The pro membership hides all ads, plus gives you double the colors in the color bucket, and more awesome pro features!

[Learn more, Memberships starting at \\$2.50/m!](#)

**Follow me
on Twitter!**

@ConvertingColor