

# Converting Colors

Hex(F03068)

Have a look what the booklet for  
Hex(F03068) contains.

<b>Hex(F03068)</b> .....	3
<b><i>Conversions</i></b> .....	4
<b><i>Details</i></b> .....	6
<b><i>Harmonies</i></b> .....	11
<b><i>Previews</i></b> .....	23
<b><i>Color Blindness Simulation</i></b> .....	26
<b><i>CSS Examples</i></b> .....	29

# Color

**Hex(F03068)**

# Conversions

## Conversions Part 1

<b>Format</b>	<b>Color</b>
Hex	F03068
RGB	240, 48, 104
RGB Percent	94%, 19%, 41%
CMY	0.0588, 0.8118, 0.5922
CMYK	0.00, 0.80, 0.57, 0.06
HSL	342°, 86%, 56%
HSV	342°, 80%, 94%
XYZ	39.4908, 21.6386, 15.1920
YIQ	111.7920, 96.4560, 58.1200

# Conversions

## Conversions Part 2

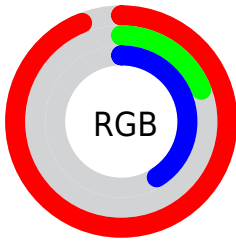
<b>Format</b>	<b>Color</b>
<b>R<sub>YB</sub></b>	240, 48, 104
Decimal	15741032
CIE <sub>Lab</sub>	53.64, 72.92, 16.34
CIE <sub>LCh</sub>	54, 74.727, 12.630
Yxy	21.6386, 0.5174, 0.2835
Android (android.graphics.Color)	4293931112 (0xFFFF03068)
YUV	111.7920, -3.8415, 112.4384
Hunter-Lab	46.5174, 70.1319, 13.1988

# Details

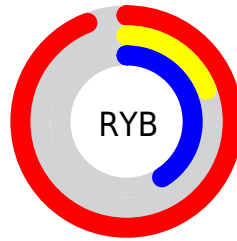
The Hex color **F03068** is a dark color, and the websafe version is hex **FF3366**. The color can be described as middle washed rose. A complement of this color would be **30F0B8**, and the grayscale version is **707070**.

A 20% lighter version of the original color is **FF729B**, and **B1003A** is the 20% darker color. If you saturate the color by 10%, you get **F01857**, and if you desaturate by 10%, it is **F04879**.

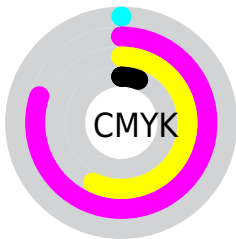
# Distribution



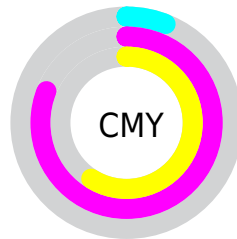
- Red (94%)
- Green (19%)
- Blue (41%)



- Red (94%)
- Yellow (19%)
- Blue (41%)



- Cyan (0%)
- Magenta (80%)
- Yellow (57%)
- Black (6%)



- Cyan (6%)
- Magenta (81%)
- Yellow (59%)

# Brightness & Saturation Gradients

These gradients show how the Hex color F03068 changes by changing the brightness by 10 percent. The first figure shows a shift by +10% for each color and the second figure -10%.

Similar to the brightness gradients but the following saturation gradients show a change of the Hex color F03068 by changing the saturation by 10% instead.



 F03068

 F03068

FFFFFF

 D00050

 FF729B

 B1003A

 FF8FB5

 920025

 FFADD1

 730010

 FFCBED

 550003

 FFE9FF

 360002

 060000

 000000

 F03068

 F03068

 F01857

 F04879

 F00046

 F0608A

 F0789B

 F090AC

 F0A8BD

 F0C0CE

 F0D8DF

 F0F0F0

 F0FFFF

# Harmonies

## Analogous

The Analogous color harmony consists of three colors that are next to each other on the color wheel.



DF3CA8



F03068



E04F2A

# Triad

The Triadic color harmony groups three colors that are evenly spaced from another and form a triangle on the color wheel.



F03068



329307



0092FC

# Complementary

The Complementary color scheme is a pair of colors which are on the opposite of each other on the color wheel.



F03068



30F0B8

# Split Complementary

Split-complementary colors differ from the complementary color scheme. The scheme consists of three colors, the original color and two neighbors of the complement color.



009AD7



F03068



009A57

# Square

The Square scheme is like the rectangle color scheme, but the four colors are evenly spaced on the color wheel.



F03068



828600



009C9B



007FFF

# Rectangle

The Rectangle color scheme consists of four colors that form a rectangle on the color wheel.



F03068



C86500



009C9B



0096F3



# Sweetspot

The Sweet Spot groups the original color and five complimentary colors.



F03068



FFC2D4



B630F0



805B65



000000



808080



# Same Dimension

The Same Dimension uses a secret algorithm to generate beautiful new colors.



F03068



FF0A52



F05630



786C6F



B80036



380010



# Inverse Universe

The Inverse Universe completely reimagines the original color for something new.



F03068



FF0A52



30CAF0



786C6F



B80036

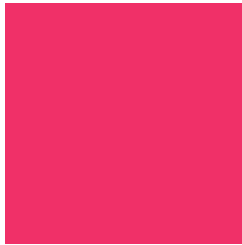


380010



# Previews

## White Background



This preview shows how the Hex color F03068 looks on a white background.

## Color Contrast Check

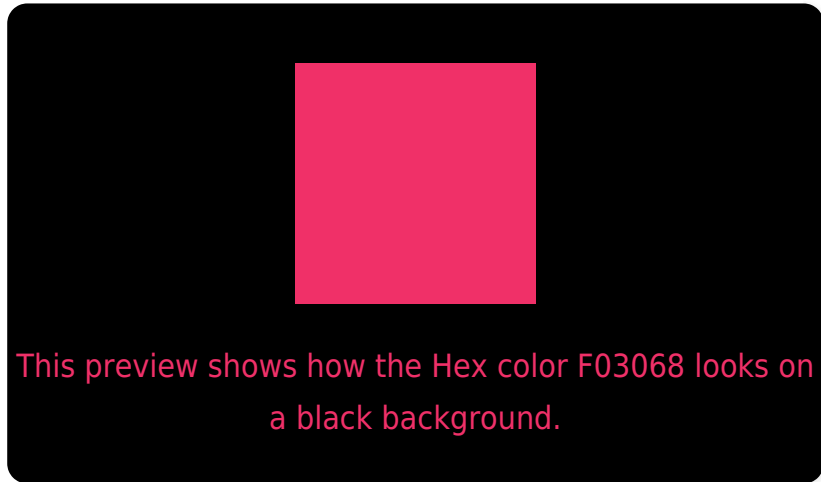
Large Text (above 18pt) WCAG AA ✓ Pass

Any Text WCAG AA × Fail

Large Text (above 18pt) WCAG AAA × Fail

Any Text WCAG AAA × Fail

# Black Background



## Color Contrast Check

Large Text (above 18pt) WCAG AA ✓ Pass

Any Text WCAG AA ✓ Pass

Large Text (above 18pt) WCAG AAA ✓ Pass

Any Text WCAG AAA × Fail

If you want to check with other color combinations, try the [Color Contrast Checker](#).



## Hex F03068 Background



This preview shows how black text looks on a background with the Hex color F03068.

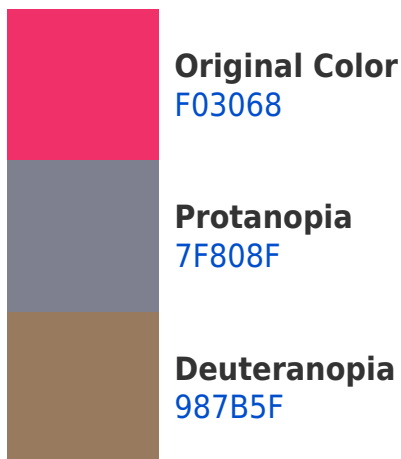


This preview shows how white text looks on a background with the Hex color F03068.

# Color Blindness Simulation

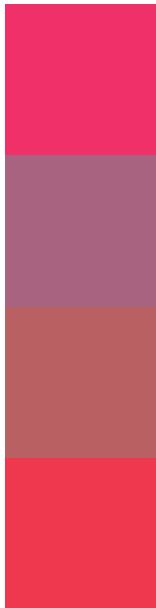
Color vision deficiency is a very complex topic, and I could not describe the different causes any better than Wikipedia does, so if you want to learn more, you should check out their [article about color blindness](#).

## Dichromacy





# Trichromacy



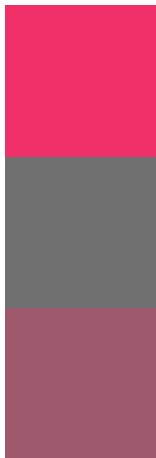
**Original Color**  
F03068

**Protanomaly**  
A86381

**Deuteranomaly**  
B86062

**Tritanomaly**  
EF374D

# Monochromacy



**Original Color**  
F03068

**Achromatopsia**  
707070

**Achromatomaly**  
9F596D

# CSS Examples

## Text

The CSS property to change the color of the text to Hex F03068 is called "color". The color property can be set on classes, ids or directly on the HTML element.

This example shows how text in the color #F03068 looks like.

```
.text, #text, p{  
    color:#F03068  
}
```

If you want to add a text shadow in that color use the text-shadow property, you can generate a text shadow directly with our [CSS Text Shadow Generator](#).

Here you see how black text with a 4 pixel #F03068 colored shadow looks like.

```
.shadow{ text-shadow: 4px 4px 2px #F03068
}
```

## Border

The CSS property to change the border of an element to Hex F03068 is called "border". The border property can be set on classes, ids or directly on the HTML element.

This example shows the color as border, it can be applied via the CSS property "border" or "border-color".

```
.border, #border, table{ border:4px solid
#F03068 }
```

If only the border color should be changed use the property `border-color`.

```
.border{ border-color:#F03068 }
```

If you want to add a box shadow in that color use:

Here you see how a box with a 4 pixel #F03068 colored shadow looks like.

```
.boxshadow{ -moz-box-shadow:4px 4px 4px  
4px #F03068; -webkit-box-shadow:4px 4px  
4px 4px #F03068; box-shadow:4px 4px 4px  
4px #F03068 }
```

# Background

The CSS property to change the background color of an element to Hex F03068 is called "background". The background property can be set on classes, ids or directly on the HTML element.

```
.background, #background, body{  
background:#F03068 }
```

If only the background color should be changed can be used:

```
.background{ background-color:#F03068 }
```

This example shows the color as background, it is applied via the CSS property "background".

To optimize and compress your CSS code, you can use our [online CSS compressor and optimizer](#) based on csstidy. If you want to create a linear or radial gradient as background or border, check our [CSS Gradient Generator](#).



Hey! You found this booklet interesting? Support Converting Colors with the new Membership Option!

The pro membership hides all ads, plus gives you double the colors in the color bucket, and more awesome pro features!

**[Learn more, Memberships starting at \\$2.50/m!](#)**

**Follow me  
on Twitter!**

@ConvertingColor