

# Converting Colors

Hex(F05E75)

Have a look what the booklet for  
Hex(F05E75) contains.

<b>Hex(F05E75)</b> .....	3
<b><i>Conversions</i></b> .....	4
<b><i>Details</i></b> .....	6
<b><i>Harmonies</i></b> .....	11
<b><i>Previews</i></b> .....	23
<b><i>Color Blindness Simulation</i></b> .....	26
<b><i>CSS Examples</i></b> .....	29

# **Color**

**Hex(F05E75)**

# Conversions

## Conversions Part 1

<b>Format</b>	<b>Color</b>
Hex	F05E75
RGB	240, 94, 117
RGB Percent	94%, 37%, 46%
CMY	0.0588, 0.6314, 0.5412
CMYK	0.00, 0.61, 0.51, 0.06
HSL	351°, 83%, 65%
HSV	351°, 61%, 94%
XYZ	43.1488, 27.8150, 19.9243
YIQ	140.2760, 79.6330, 38.1050

# Conversions

## Conversions Part 2

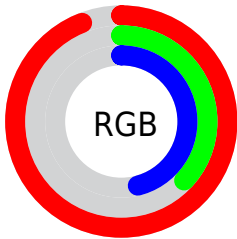
<b>Format</b>	<b>Color</b>
<b>R<sub>YB</sub></b>	240, 94, 117
Decimal	15752821
CIE <sub>Lab</sub>	59.72, 57.89, 17.01
CIE <sub>LCh</sub>	60, 60.341, 16.372
Yxy	27.8150, 0.4747, 0.3060
Android (android.graphics.Color)	4293942901 (0xFFFF05E75)
YUV	140.2760, -11.4751, 87.4579
Hunter-Lab	52.7400, 53.7434, 14.5192

# Details

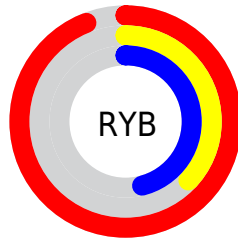
The Hex color **F05E75** is a light color, and the websafe version is hex **FF6666**. The color can be described as light muted rose. A complement of this color would be **5EF0D9**, and the grayscale version is **8C8C8C**.

A 20% lighter version of the original color is **FF96A9**, and **B32145** is the 20% darker color. If you saturate the color by 10%, you get **F04661**, and if you desaturate by 10%, it is **F07689**.

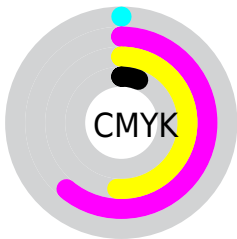
# Distribution



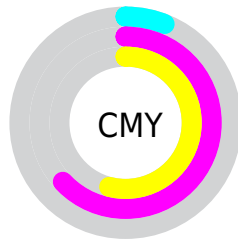
- Red (94%)
- Green (37%)
- Blue (46%)



- Red (94%)
- Yellow (37%)
- Blue (46%)



- Cyan (0%)
- Magenta (61%)
- Yellow (51%)
- Black (6%)



- Cyan (6%)
- Magenta (63%)
- Yellow (54%)

# Brightness & Saturation Gradients

These gradients show how the Hex color F05E75 changes by changing the brightness by 10 percent. The first figure shows a shift by +10% for each color and the second figure -10%.

Similar to the brightness gradients but the following saturation gradients show a change of the Hex color F05E75 by changing the saturation by 10% instead.



 F05E75

 F05E75

FFFFFF

 D1415C

 FF96A9

 B32145

 FFB2C4

 94002F

 FFCFE0

 77001B

 FFEDFD

 5A0000

 3E0003

 1B0001

 000000

 F05E75

 F05E75

 F04661

 F07689

 F02E4D

 F08E9D

 F01638

 F0A6B2

 F00026

 F0BEC6

 F0D6DA

 F0EEEE

 F0FFFF

# Harmonies

## Analogous

The Analogous color harmony consists of three colors that are next to each other on the color wheel.



E461AA



F05E75



E16F45

# Triad

The Triadic color harmony groups three colors that are evenly spaced from another and form a triangle on the color wheel.



F05E75



51A242



009DF7

# Complementary

The Complementary color scheme is a pair of colors which are on the opposite of each other on the color wheel.



F05E75



5EF0D9

# Split Complementary

Split-complementary colors differ from the complementary color scheme. The scheme consists of three colors, the original color and two neighbors of the complement color.



00A6DC



F05E75



00A875

# Square

The Square scheme is like the rectangle color scheme, but the four colors are evenly spaced on the color wheel.



F05E75



8F961B



00A9AC



608CF6

# Rectangle

The Rectangle color scheme consists of four colors that form a rectangle on the color wheel.



F05E75



CC7D2A



00A9AC



00A1F1



# Sweetspot

The Sweet Spot groups the original color and five complimentary colors.



F05E75



FFD1D8



D85EF0



806368



000000



808080



# Same Dimension

The Same Dimension uses a secret algorithm to generate beautiful new colors.



F05E75



FF4562



F08F5E



786C6E



B8001D



380009



# Inverse Universe

The Inverse Universe completely reimagines the original color for something new.



F05E75



FF4562



5EBFF0



786C6E



B8001D



380009



# Previews

## White Background



This preview shows how the Hex color F05E75 looks on a white background.

## Color Contrast Check

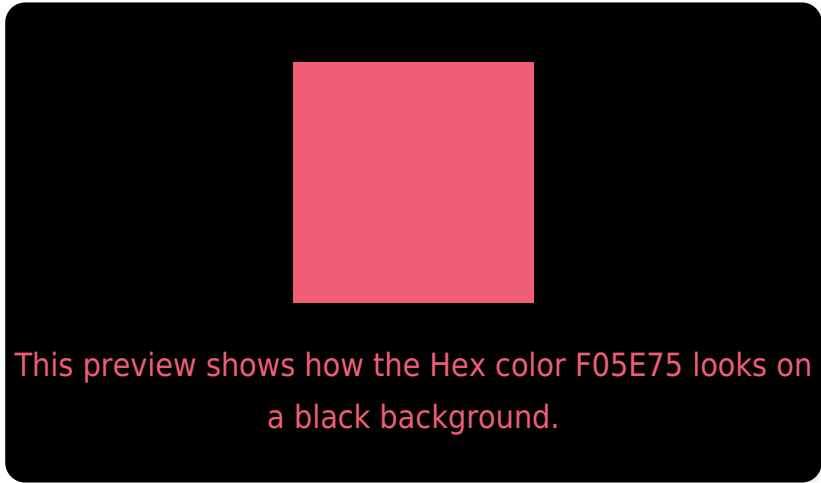
Large Text (above 18pt) WCAG AA ✓ Pass

Any Text WCAG AA × Fail

Large Text (above 18pt) WCAG AAA × Fail

Any Text WCAG AAA × Fail

# Black Background



## Color Contrast Check

Large Text (above 18pt) WCAG AA ✓ Pass

Any Text WCAG AA ✓ Pass

Large Text (above 18pt) WCAG AAA ✓ Pass

Any Text WCAG AAA × Fail

If you want to check with other color combinations, try the [Color Contrast Checker](#).



## Hex F05E75 Background



This preview shows how black text looks on a background with the Hex color F05E75.

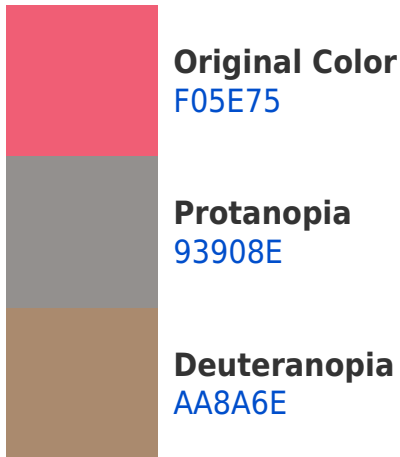


This preview shows how white text looks on a background with the Hex color F05E75.

# Color Blindness Simulation

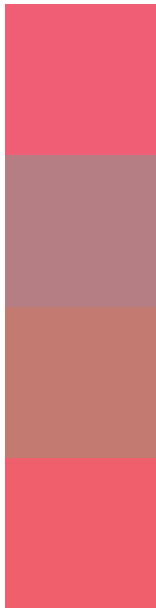
Color vision deficiency is a very complex topic, and I could not describe the different causes any better than Wikipedia does, so if you want to learn more, you should check out their [article about color blindness](#).

## Dichromacy





# Trichromacy



**Original Color**  
F05E75

**Protanomaly**  
B57E85

**Deuteranomaly**  
C37A71

**Tritanomaly**  
EF606C

# Monochromacy



**Original Color**  
F05E75

**Achromatopsia**  
8C8C8C

**Achromatomaly**  
B07B84

# CSS Examples

## Text

The CSS property to change the color of the text to Hex F05E75 is called "color". The color property can be set on classes, ids or directly on the HTML element.

This example shows how text in the color #F05E75 looks like.

```
.text, #text, p{  
    color:#F05E75  
}
```

If you want to add a text shadow in that color use the text-shadow property, you can generate a text shadow directly with our [CSS Text Shadow Generator](#).

Here you see how black text with a 4 pixel #F05E75 colored shadow looks like.

```
.shadow{ text-shadow: 4px 4px 2px #F05E75
}
```

## Border

The CSS property to change the border of an element to Hex F05E75 is called "border". The border property can be set on classes, ids or directly on the HTML element.

This example shows the color as border, it can be applied via the CSS property "border" or "border-color".

```
.border, #border, table{ border:4px solid
#F05E75 }
```

If only the border color should be changed use the property `border-color`.

```
.border{ border-color:#F05E75 }
```

If you want to add a box shadow in that color use:

Here you see how a box with a 4 pixel #F05E75 colored shadow looks like.

```
.boxshadow{ -moz-box-shadow:4px 4px 4px  
4px #F05E75; -webkit-box-shadow:4px 4px  
4px 4px #F05E75; box-shadow:4px 4px 4px  
4px #F05E75 }
```

# Background

The CSS property to change the background color of an element to Hex F05E75 is called "background". The background property can be set on classes, ids or directly on the HTML element.

```
.background, #background, body{  
background:#F05E75 }
```

If only the background color should be changed can be used:

```
.background{ background-color:#F05E75 }
```

This example shows the color as background, it is applied via the CSS property "background".

To optimize and compress your CSS code, you can use our [online CSS compressor and optimizer](#) based on csstidy. If you want to create a linear or radial gradient as background or border, check our [CSS Gradient Generator](#).



Hey! You found this booklet interesting? Support Converting Colors with the new Membership Option!

The pro membership hides all ads, plus gives you double the colors in the color bucket, and more awesome pro features!

**[Learn more, Memberships starting at \\$2.50/m!](#)**

**Follow me  
on Twitter!**

@ConvertingColor