

# Converting Colors

Hex(F05E76)

Have a look what the booklet for  
Hex(F05E76) contains.

<b>Hex(F05E76)</b> .....	3
<b><i>Conversions</i></b> .....	4
<b><i>Details</i></b> .....	6
<b><i>Harmonies</i></b> .....	11
<b><i>Previews</i></b> .....	23
<b><i>Color Blindness Simulation</i></b> .....	26
<b><i>CSS Examples</i></b> .....	29

**Color**

**Hex(F05E76)**

# Conversions

## Conversions Part 1

Format	Color
Hex	F05E76
RGB	240, 94, 118
RGB Percent	94%, 37%, 46%
CMY	0.0588, 0.6314, 0.5373
CMYK	0.00, 0.61, 0.51, 0.06
HSL	350°, 83%, 65%
HSV	350°, 61%, 94%
XYZ	43.2079, 27.8387, 20.2356
YIQ	140.3900, 79.3120, 38.4160

# Conversions

## Conversions Part 2

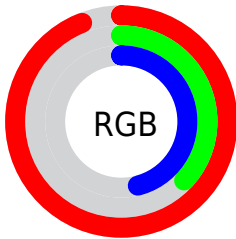
<b>Format</b>	<b>Color</b>
R <sub>Y</sub> B	240, 94, 118
Decimal	15752822
CIE Lab	59.74, 57.98, 16.46
CIE LCh	60, 60.268, 15.847
Yxy	27.8387, 0.4733, 0.3050
Android (android.graphics.Color)	4293942902 (0xFFFF05E76)
YUV	140.3900, -11.0383, 87.3580
Hunter-Lab	52.7624, 53.8422, 14.1945

# Details

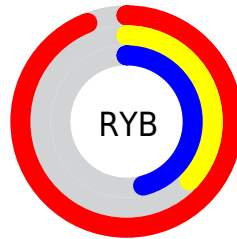
The Hex color **F05E76** is a light color, and the websafe version is hex **FF6666**. The color can be described as light muted rose. A complement of this color would be **5EF0D8**, and the grayscale version is **8C8C8C**.

A 20% lighter version of the original color is **FF96AA**, and **B32146** is the 20% darker color. If you saturate the color by 10%, you get **F04662**, and if you desaturate by 10%, it is **F0768A**.

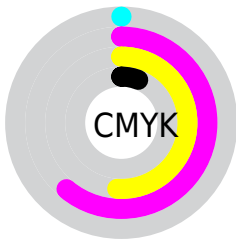
# Distribution



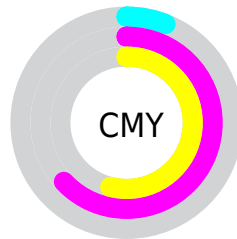
- Red (94%)
- Green (37%)
- Blue (46%)



- Red (94%)
- Yellow (37%)
- Blue (46%)



- Cyan (0%)
- Magenta (61%)
- Yellow (51%)
- Black (6%)



- Cyan (6%)
- Magenta (63%)
- Yellow (54%)

# Brightness & Saturation Gradients

These gradients show how the Hex color F05E76 changes by changing the brightness by 10 percent. The first figure shows a shift by +10% for each color and the second figure -10%.

Similar to the brightness gradients but the following saturation gradients show a change of the Hex color F05E76 by changing the saturation by 10% instead.



 F05E76

 F05E76

FFFFFF

 D1415D

 FF96AA

 B32146

 FFB2C5

 950030

 FFCFE1

 77001C

 FFEDFE

 5A0000

 3F0003

 1B0001

 000000

 F05E76

 F05E76

 F04662

 F0768A

 F02E4E

 F08E9E

 F0163A

 F0A6B2

 F00027

 F0BEC6

 F0D6DA

 F0EEEE

 F0FFFF

# Harmonies

## Analogous

The Analogous color harmony consists of three colors that are next to each other on the color wheel.



E361AB



F05E76



E26E45

# Triad

The Triadic color harmony groups three colors that are evenly spaced from another and form a triangle on the color wheel.



F05E76



52A141



009DF7

# Complementary

The Complementary color scheme is a pair of colors which are on the opposite of each other on the color wheel.



F05E76



5EF0D8

# Split Complementary

Split-complementary colors differ from the complementary color scheme. The scheme consists of three colors, the original color and two neighbors of the complement color.



00A6DB



F05E76



00A874

# Square

The Square scheme is like the rectangle color scheme, but the four colors are evenly spaced on the color wheel.



F05E76



90961B



00A9AB



5E8CF6

# Rectangle

The Rectangle color scheme consists of four colors that form a rectangle on the color wheel.



F05E76



CD7D2B



00A9AB



00A1F0



# Sweetspot

The Sweet Spot groups the original color and five complimentary colors.



F05E76



FFD1D9



D85EF0



806368



000000



808080



# Same Dimension

The Same Dimension uses a secret algorithm to generate beautiful new colors.



F05E76



FF4563



F08F5E



786C6E



B8001E



380009



# Inverse Universe

The Inverse Universe completely reimagines the original color for something new.



F05E76



FF4563



5EBFF0



786C6E



B8001E



380009



# Previews

## White Background



This preview shows how the Hex color F05E76 looks on a white background.

## Color Contrast Check

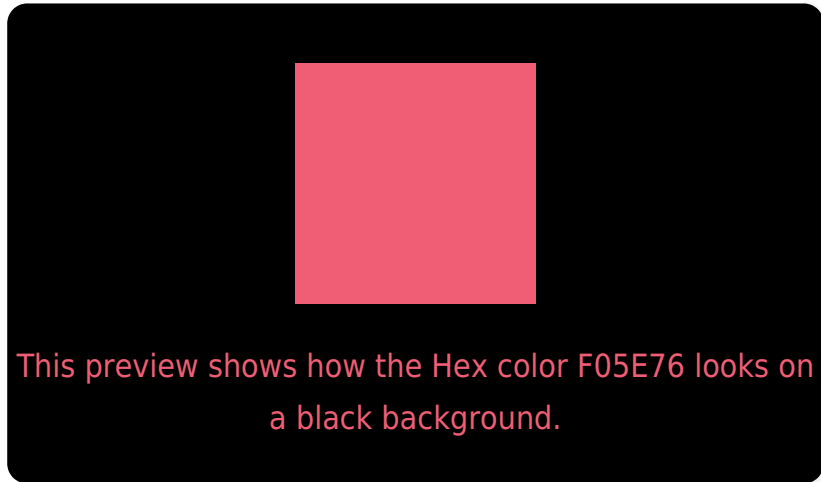
Large Text (above 18pt) WCAG AA ✓ Pass

Any Text WCAG AA × Fail

Large Text (above 18pt) WCAG AAA × Fail

Any Text WCAG AAA × Fail

# Black Background



## Color Contrast Check

Large Text (above 18pt) WCAG AA ✓ Pass

Any Text WCAG AA ✓ Pass

Large Text (above 18pt) WCAG AAA ✓ Pass

Any Text WCAG AAA × Fail

If you want to check with other color combinations, try the [Color Contrast Checker](#).



## Hex F05E76 Background



This preview shows how black text looks on a background with the Hex color F05E76.

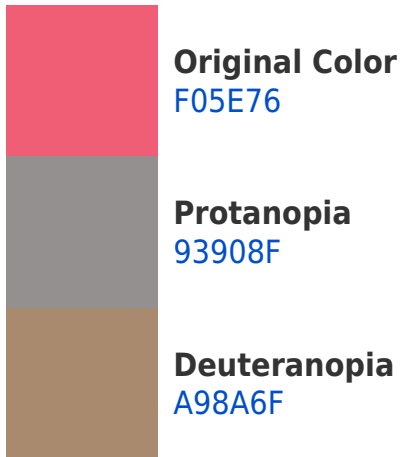


This preview shows how white text looks on a background with the Hex color F05E76.

# Color Blindness Simulation

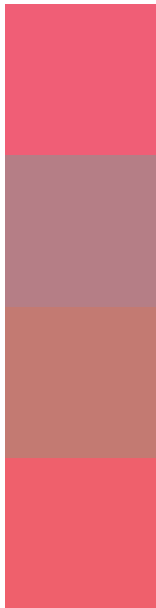
Color vision deficiency is a very complex topic, and I could not describe the different causes any better than Wikipedia does, so if you want to learn more, you should check out their [article about color blindness](#).

## Dichromacy





# Trichromacy



**Original Color**  
F05E76

**Protanomaly**  
B57E86

**Deuteranomaly**  
C37A72

**Tritanomaly**  
EF606C

# Monochromacy



**Original Color**  
F05E76

**Achromatopsia**  
8C8C8C

**Achromatomaly**  
B07B84

# CSS Examples

## Text

The CSS property to change the color of the text to Hex F05E76 is called "color". The color property can be set on classes, ids or directly on the HTML element.

This example shows how text in the color #F05E76 looks like.

```
.text, #text, p{  
    color:#F05E76  
}
```

If you want to add a text shadow in that color use the text-shadow property, you can generate a text shadow directly with our [CSS Text Shadow Generator](#).

Here you see how black text with a 4 pixel #F05E76 colored shadow looks like.

```
.shadow{ text-shadow: 4px 4px 2px #F05E76
}
```

## Border

The CSS property to change the border of an element to Hex F05E76 is called "border". The border property can be set on classes, ids or directly on the HTML element.

This example shows the color as border, it can be applied via the CSS property "border" or "border-color".

```
.border, #border, table{ border:4px solid
#F05E76 }
```

If only the border color should be changed use the property `border-color`.

```
.border{ border-color:#F05E76 }
```

If you want to add a box shadow in that color use:

Here you see how a box with a 4 pixel #F05E76 colored shadow looks like.

```
.boxshadow{ -moz-box-shadow:4px 4px 4px  
4px #F05E76; -webkit-box-shadow:4px 4px  
4px 4px #F05E76; box-shadow:4px 4px 4px  
4px #F05E76 }
```

# Background

The CSS property to change the background color of an element to Hex F05E76 is called "background". The background property can be set on classes, ids or directly on the HTML element.

```
.background, #background, body{  
background:#F05E76 }
```

If only the background color should be changed can be used:

```
.background{ background-color:#F05E76 }
```

This example shows the color as background, it is applied via the CSS property "background".

To optimize and compress your CSS code, you can use our [online CSS compressor and optimizer](#) based on csstidy. If you want to create a linear or radial gradient as background or border, check our [CSS Gradient Generator](#).



Hey! You found this booklet interesting? Support Converting Colors with the new Membership Option!

The pro membership hides all ads, plus gives you double the colors in the color bucket, and more awesome pro features!

**[Learn more, Memberships starting at \\$2.50/m!](#)**

**Follow me  
on Twitter!**

@ConvertingColor