

# Converting Colors

Hex(F06686)

Have a look what the booklet for  
Hex(F06686) contains.

<b>Hex(F06686)</b> .....	3
<i><b>Conversions</b></i> .....	4
<i><b>Details</b></i> .....	6
<i><b>Harmonies</b></i> .....	11
<i><b>Previews</b></i> .....	23
<i><b>Color Blindness Simulation</b></i> .....	26
<i><b>CSS Examples</b></i> .....	29

**Color**

**Hex(F06686)**

# Conversions

## Conversions Part 1

Format	Color
Hex	F06686
RGB	240, 102, 134
RGB Percent	94%, 40%, 53%
CMY	0.0588, 0.6000, 0.4745
CMYK	0.00, 0.57, 0.44, 0.06
HSL	346°, 82%, 67%
HSV	346°, 57%, 94%
XYZ	44.9896, 29.7492, 25.9252
YIQ	146.9100, 71.9760, 39.2080

# Conversions

## Conversions Part 2

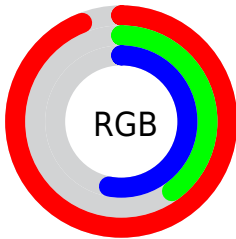
<b>Format</b>	<b>Color</b>
<b>R<sub>YB</sub></b>	240, 102, 134
Decimal	15754886
CIE <sub>Lab</sub>	61.44, 55.89, 9.55
CIE <sub>LCh</sub>	61, 56.697, 9.699
Yxy	29.7492, 0.4469, 0.2955
Android (android.graphics.Color)	4293944966 (0xFFFF06686)
YUV	146.9100, -6.3646, 81.6399
Hunter-Lab	54.5429, 51.7855, 9.9984

# Details

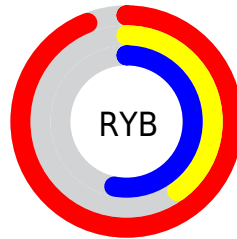
The Hex color **F06686** is a light color, and the websafe version is hex **FF6699**. A complement of this color would be **66F0D0**, and the grayscale version is **939393**.

A 20% lighter version of the original color is **FF9EBB**, and **B32D55** is the 20% darker color. If you saturate the color by 10%, you get **F04E74**, and if you desaturate by 10%, it is **F07E98**.

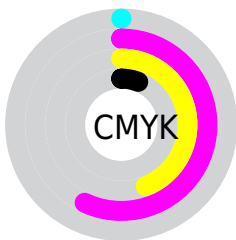
# Distribution



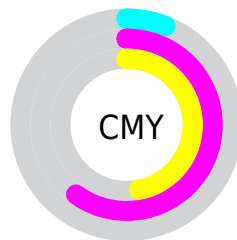
- Red (94%)
- Green (40%)
- Blue (53%)



- Red (94%)
- Yellow (40%)
- Blue (53%)



- Cyan (0%)
- Magenta (57%)
- Yellow (44%)
- Black (6%)



- Cyan (6%)
- Magenta (60%)
- Yellow (47%)

# Brightness & Saturation Gradients

These gradients show how the Hex color F06686 changes by changing the brightness by 10 percent. The first figure shows a shift by +10% for each color and the second figure -10%.

Similar to the brightness gradients but the following saturation gradients show a change of the Hex color F06686 by changing the saturation by 10% instead.



 F06686

 F06686

FFFFFF

 D24A6D

 FF9EBB

 B32D55

 FFBAD7

 96013E

 FFD7F3

 790028

 FFF4FF

 5C0014

 410002

 210001

 000000

 F06686

 F06686

 F04E74

 F07E98

 F03661

 F096AB

 F01E4F

 F0AEBD

 F0063C

 F0C6D0

 F00038

 F0DEE2

 F0F6F5

 F0FFFF

# Harmonies

## Analogous

The Analogous color harmony consists of three colors that are next to each other on the color wheel.



DD6DB8



F06686



E87257

# Triad

The Triadic color harmony groups three colors that are evenly spaced from another and form a triangle on the color wheel.



F06686



69A342



00A3F2

# Complementary

The Complementary color scheme is a pair of colors which are on the opposite of each other on the color wheel.



F06686



66F0D0

# Split Complementary

Split-complementary colors differ from the complementary color scheme. The scheme consists of three colors, the original color and two neighbors of the complement color.



00ABD3



F06686



00AA70

# Square

The Square scheme is like the rectangle color scheme, but the four colors are evenly spaced on the color wheel.



F06686



A09728



00ADA4



4F94F7

# Rectangle

The Rectangle color scheme consists of four colors that form a rectangle on the color wheel.



F06686



D67F3D



00ADA4



00A6EA



# Sweetspot

The Sweet Spot groups the original color and five complimentary colors.



F06686



FFD4DE



D066F0



80666C



000000



808080



# Same Dimension

The Same Dimension uses a secret algorithm to generate beautiful new colors.



F06686



FF4F78



F08B66



786C6F



B8002B



38000D



# Inverse Universe

The Inverse Universe completely reimagines the original color for something new.



F06686



FF4F78



66CBF0



786C6F



B8002B



38000D



# Previews

## White Background



This preview shows how the Hex color F06686 looks on a white background.

## Color Contrast Check

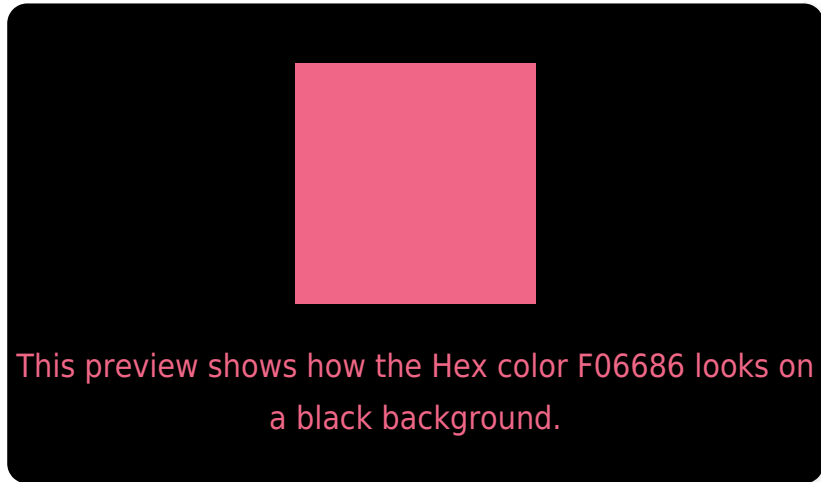
Large Text (above 18pt) WCAG AA ✓ Pass

Any Text WCAG AA × Fail

Large Text (above 18pt) WCAG AAA × Fail

Any Text WCAG AAA × Fail

# Black Background



## Color Contrast Check

Large Text (above 18pt) WCAG AA ✓ Pass

Any Text WCAG AA ✓ Pass

Large Text (above 18pt) WCAG AAA ✓ Pass

Any Text WCAG AAA × Fail

If you want to check with other color combinations, try the [Color Contrast Checker](#).



## Hex F06686 Background



This preview shows how black text looks on a background with the Hex color F06686.

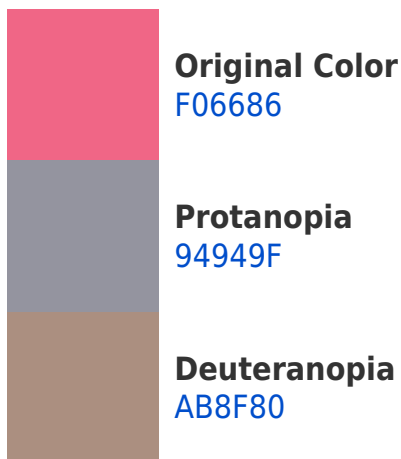


This preview shows how white text looks on a background with the Hex color F06686.

# Color Blindness Simulation

Color vision deficiency is a very complex topic, and I could not describe the different causes any better than Wikipedia does, so if you want to learn more, you should check out their [article about color blindness](#).

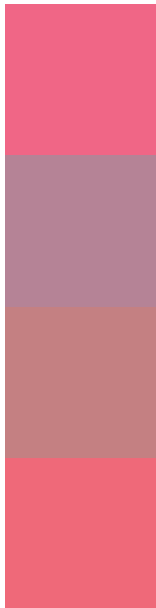
## Dichromacy





**Tritanopia**  
EF6A71

# Trichromacy



**Original Color**  
F06686

**Protanomaly**  
B58396

**Deuteranomaly**  
C48082

**Tritanomaly**  
EF6979

# Monochromacy



**Original Color**  
F06686

**Achromatopsia**  
939393

**Achromatomaly**  
B5838E

# CSS Examples

## Text

The CSS property to change the color of the text to Hex F06686 is called "color". The color property can be set on classes, ids or directly on the HTML element.

This example shows how text in the color #F06686 looks like.

```
.text, #text, p{  
    color:#F06686  
}
```

If you want to add a text shadow in that color use the text-shadow property, you can generate a text shadow directly with our [CSS Text Shadow Generator](#).

Here you see how black text with a 4 pixel #F06686 colored shadow looks like.

```
.shadow{ text-shadow: 4px 4px 2px #F06686
}
```

## Border

The CSS property to change the border of an element to Hex F06686 is called "border". The border property can be set on classes, ids or directly on the HTML element.

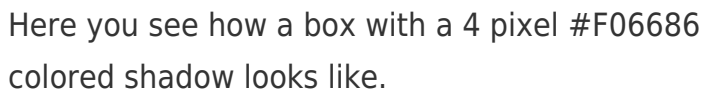
This example shows the color as border, it can be applied via the CSS property "border" or "border-color".

```
.border, #border, table{ border:4px solid
#F06686 }
```

If only the border color should be changed use the property `border-color`.

```
.border{ border-color:#F06686 }
```

If you want to add a box shadow in that color use:



Here you see how a box with a 4 pixel #F06686 colored shadow looks like.

```
.boxshadow{ -moz-box-shadow:4px 4px 4px  
4px #F06686; -webkit-box-shadow:4px 4px  
4px 4px #F06686; box-shadow:4px 4px 4px  
4px #F06686 }
```

# Background

The CSS property to change the background color of an element to Hex F06686 is called "background". The background property can be set on classes, ids or directly on the HTML element.

```
.background, #background, body{  
background:#F06686 }
```

If only the background color should be changed can be used:

```
.background{ background-color:#F06686 }
```

This example shows the color as background, it is applied via the CSS property "background".

To optimize and compress your CSS code, you can use our [online CSS compressor and optimizer](#) based on csstidy. If you want to create a linear or radial gradient as background or border, check our [CSS Gradient Generator](#).



Hey! You found this booklet interesting? Support Converting Colors with the new Membership Option!

The pro membership hides all ads, plus gives you double the colors in the color bucket, and more awesome pro features!

**[Learn more, Memberships starting at \\$2.50/m!](#)**

**Follow me  
on Twitter!**

@ConvertingColor