

# Converting Colors

Hex(F0698D)

Have a look what the booklet for  
Hex(F0698D) contains.

<b>Hex(F0698D)</b> .....	3
<i><b>Conversions</b></i> .....	4
<i><b>Details</b></i> .....	6
<i><b>Harmonies</b></i> .....	11
<i><b>Previews</b></i> .....	23
<i><b>Color Blindness Simulation</b></i> .....	26
<i><b>CSS Examples</b></i> .....	29

**Color**

**Hex(F0698D)**

# Conversions

## Conversions Part 1

Format	Color
Hex	F0698D
RGB	240, 105, 141
RGB Percent	94%, 41%, 55%
CMY	0.0588, 0.5882, 0.4471
CMYK	0.00, 0.56, 0.41, 0.06
HSL	344°, 82%, 68%
HSV	344°, 56%, 94%
XYZ	45.7945, 30.5515, 28.6827
YIQ	149.4690, 68.9040, 39.8160

# Conversions

## Conversions Part 2

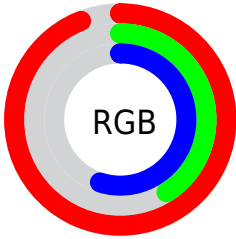
Format	Color
R <sub>Y</sub> B	240, 105, 141
Decimal	15755661
CIE Lab	62.13, 55.22, 6.49
CIE LCh	62, 55.603, 6.707
Yxy	30.5515, 0.4360, 0.2909
Android (android.graphics.Color)	4293945741 (0xFFFF0698D)
YUV	149.4690, -4.1752, 79.3957
Hunter-Lab	55.2734, 51.1602, 7.9244

# Details

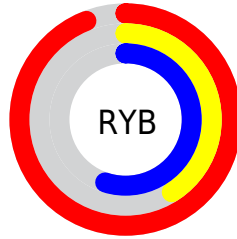
The Hex color **F0698D** is a light color, and the websafe version is hex **FF6699**. A complement of this color would be **69F0CC**, and the grayscale version is **959595**.

A 20% lighter version of the original color is **FFA1C2**, and **B4305B** is the 20% darker color. If you saturate the color by 10%, you get **F0517B**, and if you desaturate by 10%, it is **F0819F**.

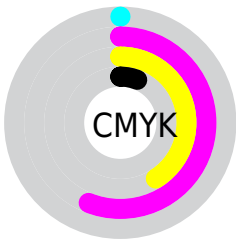
# Distribution



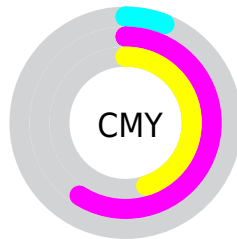
- Red (94%)
- Green (41%)
- Blue (55%)



- Red (94%)
- Yellow (41%)
- Blue (55%)



- Cyan (0%)
- Magenta (56%)
- Yellow (41%)
- Black (6%)



- Cyan (6%)
- Magenta (59%)
- Yellow (45%)

# Brightness & Saturation Gradients

These gradients show how the Hex color F0698D changes by changing the brightness by 10 percent. The first figure shows a shift by +10% for each color and the second figure -10%.

Similar to the brightness gradients but the following saturation gradients show a change of the Hex color F0698D by changing the saturation by 10% instead.



 F0698D

 F0698D

FFFFFF

 D24D74

 FFA1C2

 B4305B

 FFBDDDE

 960A44

 FFDAFB

 79002E

 FFF7FF

 5D001A

 420002

 230001

 000000

 F0698D

 F0698D

 F0517B

 F0819F

 F0396A

 F099B0

 F02158

 F0B1C2

 F00947

 F0C9D3

 F00040

 F0E1E5

 F0F9F7

 F0FFFF

# Harmonies

## Analogous

The Analogous color harmony consists of three colors that are next to each other on the color wheel.



DB71BE



F0698D



EA735E

# Triad

The Triadic color harmony groups three colors that are evenly spaced from another and form a triangle on the color wheel.



F0698D



72A442



00A6F0

# Complementary

The Complementary color scheme is a pair of colors which are on the opposite of each other on the color wheel.



F0698D



69F0CC

# Split Complementary

Split-complementary colors differ from the complementary color scheme. The scheme consists of three colors, the original color and two neighbors of the complement color.



00ADD0



F0698D



15AB6D

# Square

The Square scheme is like the rectangle color scheme, but the four colors are evenly spaced on the color wheel.



F0698D



A7972C



00AEAO



4698F8

# Rectangle

The Rectangle color scheme consists of four colors that form a rectangle on the color wheel.



F0698D



DA7F44



00AEA0



00A9E8



# Sweetspot

The Sweet Spot groups the original color and five complimentary colors.



F0698D



FFD4DF



CC69F0



80666D



000000



808080



# Same Dimension

The Same Dimension uses a secret algorithm to generate beautiful new colors.



F0698D



FF5280



F08969



786C6F



B80031



38000F



# Inverse Universe

The Inverse Universe completely reimagines the original color for something new.



F0698D



FF5280



69D0F0



786C6F



B80031



38000F



# Previews

## White Background



This preview shows how the Hex color F0698D looks on a white background.

## Color Contrast Check

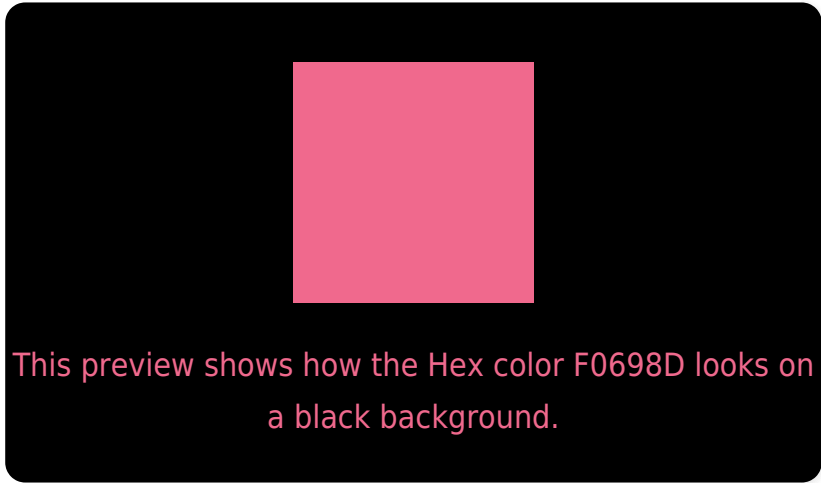
Large Text (above 18pt) WCAG AA × Fail

Any Text WCAG AA × Fail

Large Text (above 18pt) WCAG AAA × Fail

Any Text WCAG AAA × Fail

# Black Background



## Color Contrast Check

Large Text (above 18pt) WCAG AA ✓ Pass

Any Text WCAG AA ✓ Pass

Large Text (above 18pt) WCAG AAA ✓ Pass

Any Text WCAG AAA ✓ Pass

If you want to check with other color combinations, try the [Color Contrast Checker](#).



## Hex F0698D Background



This preview shows how black text looks on a background with the Hex color F0698D.

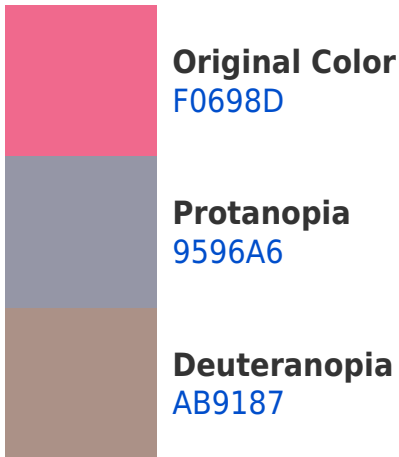



This preview shows how white text looks on a background with the Hex color F0698D.

# Color Blindness Simulation

Color vision deficiency is a very complex topic, and I could not describe the different causes any better than Wikipedia does, so if you want to learn more, you should check out their [article about color blindness](#).

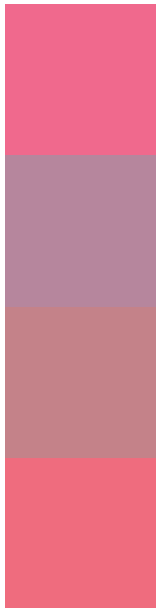
## Dichromacy





**Tritanopia**  
EE6D75

# Trichromacy



**Original Color**  
F0698D

**Protanomaly**  
B6869D

**Deuteranomaly**  
C48289

**Tritanomaly**  
EF6C7E

# Monochromacy



**Original Color**  
F0698D

**Achromatopsia**  
959595

**Achromatomaly**  
B68592

# CSS Examples

## Text

The CSS property to change the color of the text to Hex F0698D is called "color". The color property can be set on classes, ids or directly on the HTML element.

This example shows how text in the color #F0698D looks like.

```
.text, #text, p{  
    color:#F0698D  
}
```

If you want to add a text shadow in that color use the text-shadow property, you can generate a text shadow directly with our [CSS Text Shadow Generator](#).

Here you see how black text with a 4 pixel #F0698D colored shadow looks like.

```
.shadow{ text-shadow: 4px 4px 2px #F0698D
}
```

## Border

The CSS property to change the border of an element to Hex F0698D is called "border". The border property can be set on classes, ids or directly on the HTML element.

This example shows the color as border, it can be applied via the CSS property "border" or "border-color".

```
.border, #border, table{ border:4px solid
#F0698D }
```

If only the border color should be changed use the property `border-color`.

```
.border{ border-color:#F0698D }
```

If you want to add a box shadow in that color use:

Here you see how a box with a 4 pixel #F0698D colored shadow looks like.

```
.boxshadow{ -moz-box-shadow:4px 4px 4px  
4px #F0698D; -webkit-box-shadow:4px 4px  
4px 4px #F0698D; box-shadow:4px 4px 4px  
4px #F0698D }
```

# Background

The CSS property to change the background color of an element to Hex F0698D is called "background". The background property can be set on classes, ids or directly on the HTML element.

```
.background, #background, body{  
background:#F0698D }
```

If only the background color should be changed can be used:

```
.background{ background-color:#F0698D }
```

This example shows the color as background, it is applied via the CSS property "background".

To optimize and compress your CSS code, you can use our [online CSS compressor and optimizer](#) based on csstidy. If you want to create a linear or radial gradient as background or border, check our [CSS Gradient Generator](#).



Hey! You found this booklet interesting? Support Converting Colors with the new Membership Option!

The pro membership hides all ads, plus gives you double the colors in the color bucket, and more awesome pro features!

**[Learn more, Memberships starting at \\$2.50/m!](#)**

**Follow me  
on Twitter!**

@ConvertingColor