

Converting Colors

Hex(F07689)

Have a look what the booklet for
Hex(F07689) contains.

Hex(F07689)	3
<i>Conversions</i>	4
<i>Details</i>	6
<i>Harmonies</i>	11
<i>Previews</i>	23
<i>Color Blindness Simulation</i>	26
<i>CSS Examples</i>	29

Color

Hex(F07689)

Conversions

Conversions Part 1

Format	Color
Hex	F07689
RGB	240, 118, 137
RGB Percent	94%, 46%, 54%
CMY	0.0588, 0.5373, 0.4627
CMYK	0.00, 0.51, 0.43, 0.06
HSL	351°, 80%, 70%
HSV	351°, 51%, 94%
XYZ	46.9290, 33.2883, 27.6188
YIQ	156.6440, 66.6130, 31.7730

Conversions

Conversions Part 2

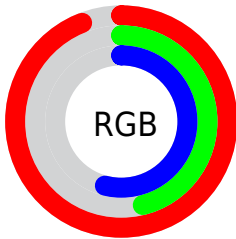
Format	Color
R _Y B	240, 118, 137
Decimal	15758985
CIE Lab	64.39, 48.66, 12.01
CIE LCh	64, 50.123, 13.859
Yxy	33.2883, 0.4352, 0.3087
Android (android.graphics.Color)	4293949065 (0xFFFF07689)
YUV	156.6440, -9.6845, 73.1032
Hunter-Lab	57.6960, 44.2210, 12.0054

Details

The Hex color **F07689** is a light color, and the websafe version is hex **CC6666**. A complement of this color would be **76F0DD**, and the grayscale version is **9D9D9D**.

A 20% lighter version of the original color is **FFADBE**, and **B44057** is the 20% darker color. If you saturate the color by 10%, you get **F05E75**, and if you desaturate by 10%, it is **F08E9D**.

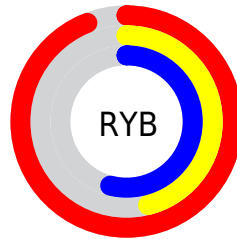
Distribution



Red (94%)

Green (46%)

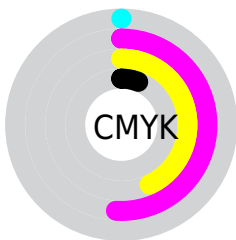
Blue (54%)



Red (94%)

Yellow (46%)

Blue (54%)

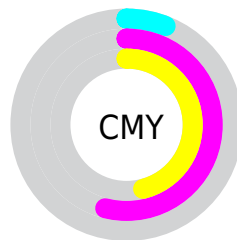


Cyan (0%)

Magenta (51%)

Yellow (43%)

Black (6%)



Cyan (6%)

Magenta (54%)

Yellow (46%)

Brightness & Saturation Gradients

These gradients show how the Hex color F07689 changes by changing the brightness by 10 percent. The first figure shows a shift by +10% for each color and the second figure -10%.

Similar to the brightness gradients but the following saturation gradients show a change of the Hex color F07689 by changing the saturation by 10% instead.

 F07689

 F07689

FFFFFF

 D25B70

 FFADBE

 B44057

 FFC9DA

 972440

 FFE6F6

 7A002A

 5E0016

 420000

 260001

 000000

 F07689

 F07689

 F05E75

 F08E9D

 F04660

 F0A6B2

 F02E4C

 F0BEC6

 F01638

 F0D6DA

 F00025

 F0EEEE

 F0FFFF

Harmonies

Analogous

The Analogous color harmony consists of three colors that are next to each other on the color wheel.



E279B6



F07689



E68160

Triad

The Triadic color harmony groups three colors that are evenly spaced from another and form a triangle on the color wheel.



F07689



70AB59



00A8F2

Complementary

The Complementary color scheme is a pair of colors which are on the opposite of each other on the color wheel.



F07689



76F0DD

Split Complementary

Split-complementary colors differ from the complementary color scheme. The scheme consists of three colors, the original color and two neighbors of the complement color.



00B0D9



F07689



1CB182

Square

The Square scheme is like the rectangle color scheme, but the four colors are evenly spaced on the color wheel.



F07689



A2A041



00B3B0



759AF3

Rectangle

The Rectangle color scheme consists of four colors that form a rectangle on the color wheel.



F07689



D58B4C



00B3B0



00ABEC

Sweetspot

The Sweet Spot groups the original color and five complimentary colors.



F07689



FFD9DF



DC76F0



80696C



000000



808080

Same Dimension

The Same Dimension uses a secret algorithm to generate beautiful new colors.



F07689



FF637C



F09F76



786C6E



B8001D



380009

Inverse Universe

The Inverse Universe completely reimagines the original color for something new.



F07689



FF637C



76C7F0



786C6E



B8001D



380009

Previews

White Background



This preview shows how the Hex color F07689 looks on a white background.

Color Contrast Check

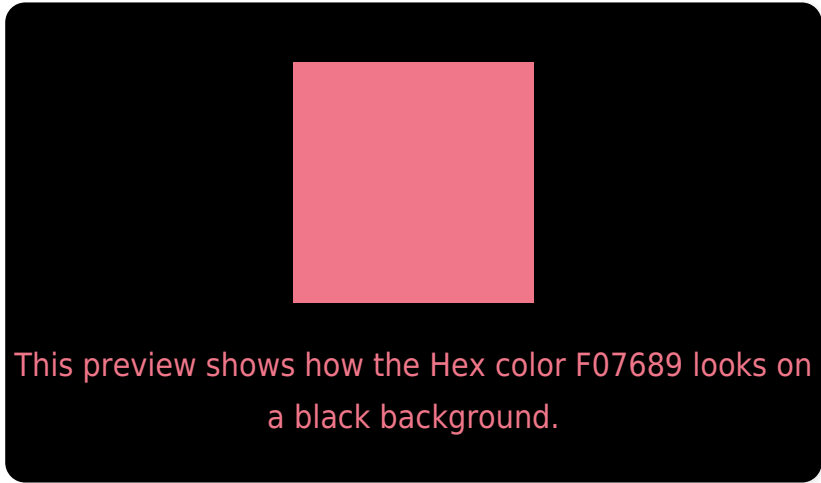
Large Text (above 18pt) WCAG AA × Fail

Any Text WCAG AA × Fail

Large Text (above 18pt) WCAG AAA × Fail

Any Text WCAG AAA × Fail

Black Background



Color Contrast Check

Large Text (above 18pt) WCAG AA ✓ Pass

Any Text WCAG AA ✓ Pass

Large Text (above 18pt) WCAG AAA ✓ Pass

Any Text WCAG AAA ✓ Pass

If you want to check with other color combinations, try the [Color Contrast Checker](#).

Hex F07689 Background



This preview shows how black text looks on a background with the Hex color F07689.

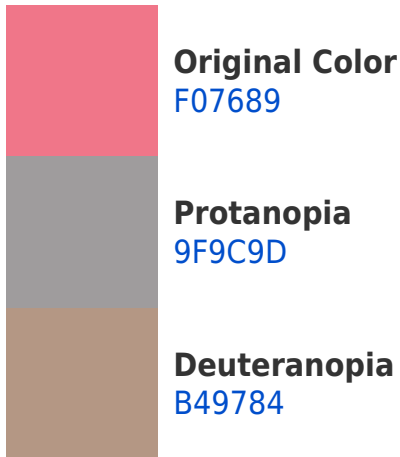


This preview shows how white text looks on a background with the Hex color F07689.

Color Blindness Simulation

Color vision deficiency is a very complex topic, and I could not describe the different causes any better than Wikipedia does, so if you want to learn more, you should check out their [article about color blindness](#).

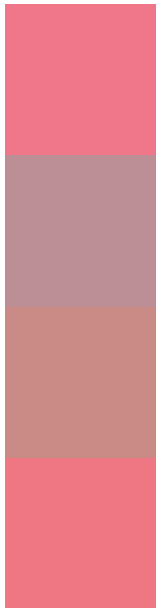
Dichromacy





Tritanopia
EF7880

Trichromacy



Original Color
F07689

Protanomaly
BC8E96

Deuteranomaly
CA8B86

Tritanomaly
EF7783

Monochromacy



Original Color
F07689

Achromatopsia
9D9D9D

Achromatomaly
BB8F96

CSS Examples

Text

The CSS property to change the color of the text to Hex F07689 is called "color". The color property can be set on classes, ids or directly on the HTML element.

This example shows how text in the color #F07689 looks like.

```
.text, #text, p{  
    color:#F07689  
}
```

If you want to add a text shadow in that color use the text-shadow property, you can generate a text shadow directly with our [CSS Text Shadow Generator](#).

Here you see how black text with a 4 pixel #F07689 colored shadow looks like.

```
.shadow{ text-shadow: 4px 4px 2px #F07689
}
```

Border

The CSS property to change the border of an element to Hex F07689 is called "border". The border property can be set on classes, ids or directly on the HTML element.

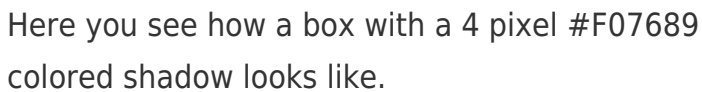
This example shows the color as border, it can be applied via the CSS property "border" or "border-color".

```
.border, #border, table{ border:4px solid
#F07689 }
```

If only the border color should be changed use the property `border-color`.

```
.border{ border-color:#F07689 }
```

If you want to add a box shadow in that color use:



Here you see how a box with a 4 pixel #F07689 colored shadow looks like.

```
.boxshadow{ -moz-box-shadow:4px 4px 4px  
4px #F07689; -webkit-box-shadow:4px 4px  
4px 4px #F07689; box-shadow:4px 4px 4px  
4px #F07689 }
```

Background

The CSS property to change the background color of an element to Hex F07689 is called "background". The background property can be set on classes, ids or directly on the HTML element.

```
.background, #background, body{  
background:#F07689 }
```

If only the background color should be changed can be used:

```
.background{ background-color:#F07689 }
```

This example shows the color as background, it is applied via the CSS property "background".

To optimize and compress your CSS code, you can use our [online CSS compressor and optimizer](#) based on csstidy. If you want to create a linear or radial gradient as background or border, check our [CSS Gradient Generator](#).

Hey! You found this booklet interesting? Support Converting Colors with the new Membership Option!

The pro membership hides all ads, plus gives you double the colors in the color bucket, and more awesome pro features!

[Learn more, Memberships starting at \\$2.50/m!](#)

**Follow me
on Twitter!**

@ConvertingColor