

Converting Colors

Hex(F0848E)

Have a look what the booklet for
Hex(F0848E) contains.

Hex(F0848E)	3
<i>Conversions</i>	4
<i>Details</i>	6
<i>Harmonies</i>	11
<i>Previews</i>	23
<i>Color Blindness Simulation</i>	26
<i>CSS Examples</i>	29

Color

Hex(F0848E)

Conversions

Conversions Part 1

Format	Color
Hex	F0848E
RGB	240, 132, 142
RGB Percent	94%, 52%, 56%
CMY	0.0588, 0.4824, 0.4431
CMYK	0.00, 0.45, 0.41, 0.06
HSL	354°, 78%, 73%
HSV	354°, 45%, 94%
XYZ	49.0689, 36.9808, 30.1430
YIQ	165.4320, 61.1580, 26.0060

Conversions

Conversions Part 2

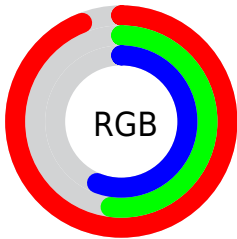
Format	Color
R_{YB}	240, 132, 142
Decimal	15762574
CIE _{Lab}	67.26, 42.22, 13.21
CIE _{LCh}	67, 44.234, 17.373
Yxy	36.9808, 0.4223, 0.3183
Android (android.graphics.Color)	4293952654 (0xFFFF0848E)
YUV	165.4320, -11.5520, 65.3961
Hunter-Lab	60.8118, 37.6105, 13.1796

Details

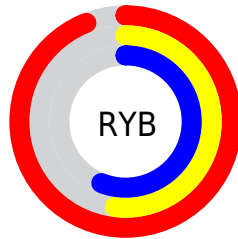
The Hex color **F0848E** is a light color, and the websafe version is hex **FF9999**. A complement of this color would be **84F0E6**, and the grayscale version is **A6A6A6**.

A 20% lighter version of the original color is **FFBBC4**, and **B54F5C** is the 20% darker color. If you saturate the color by 10%, you get **F06C78**, and if you desaturate by 10%, it is **F09CA4**.

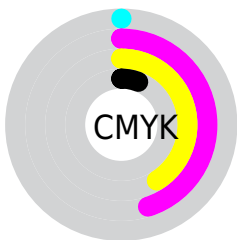
Distribution



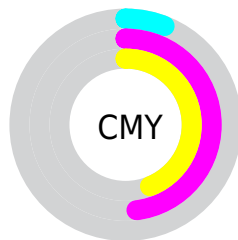
- Red (94%)
- Green (52%)
- Blue (56%)



- Red (94%)
- Yellow (52%)
- Blue (56%)



- Cyan (0%)
- Magenta (45%)
- Yellow (41%)
- Black (6%)



- Cyan (6%)
- Magenta (48%)
- Yellow (44%)

Brightness & Saturation Gradients

These gradients show how the Hex color F0848E changes by changing the brightness by 10 percent. The first figure shows a shift by +10% for each color and the second figure -10%.

Similar to the brightness gradients but the following saturation gradients show a change of the Hex color F0848E by changing the saturation by 10% instead.

 F0848E

 F0848E

FFFFFF

 D26A74

 FFBBC4

 B54F5C

 FFD7DF

 983645

 FFF4FC

 7B1A2E

 5F001A

 450000

 2B0001

 000000

 F0848E

 F0848E

 F06C78

 F09CA4

 F05462

 F0B4BA

 F03C4D

 F0CCCC

 F02437

 F0E4E5

 F00C21

 F0FCFB

 F00016

 F0FFFF

Harmonies

Analogous

The Analogous color harmony consists of three colors that are next to each other on the color wheel.



E685B6



F0848E



E68D6B

Triad

The Triadic color harmony groups three colors that are evenly spaced from another and form a triangle on the color wheel.



F0848E



78B26C



38ADF1

Complementary

The Complementary color scheme is a pair of colors which are on the opposite of each other on the color wheel.



F0848E



84F0E6

Split Complementary

Split-complementary colors differ from the complementary color scheme. The scheme consists of three colors, the original color and two neighbors of the complement color.



00B5DD



F0848E



3BB791

Square

The Square scheme is like the rectangle color scheme, but the four colors are evenly spaced on the color wheel.



F0848E



A5A955



00B8BA



8DA0F0

Rectangle

The Rectangle color scheme consists of four colors that form a rectangle on the color wheel.



F0848E



D5975A



00B8BA



00B0ED

Sweetspot

The Sweet Spot groups the original color and five complimentary colors.



F0848E



FFDBDF



E584F0



806A6C



000000



808080

Same Dimension

The Same Dimension uses a secret algorithm to generate beautiful new colors.



F0848E



FF7582



F0AF84



786C6D



B80011



380005

Inverse Universe

The Inverse Universe completely reimagines the original color for something new.



F0848E



FF7582



84C5F0



786C6D



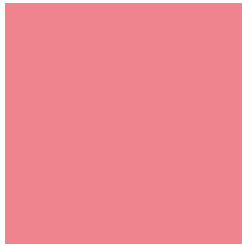
B80011



380005

Previews

White Background



This preview shows how the Hex color F0848E looks on a white background.

Color Contrast Check

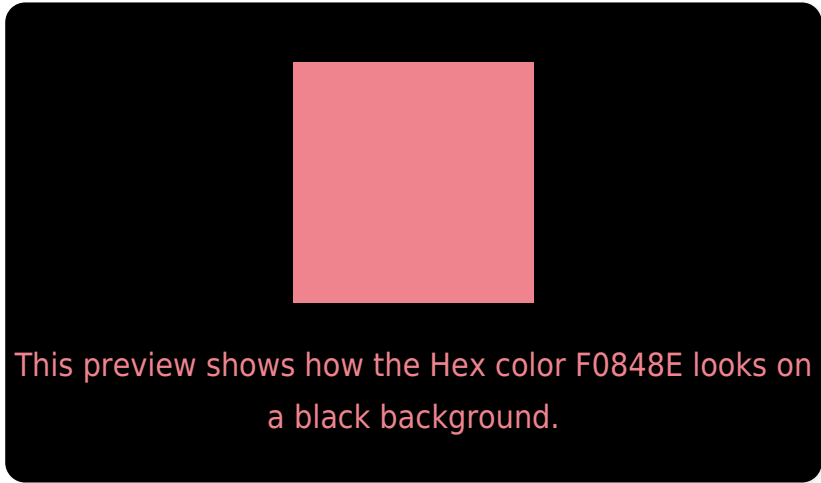
Large Text (above 18pt) WCAG AA × Fail

Any Text WCAG AA × Fail

Large Text (above 18pt) WCAG AAA × Fail

Any Text WCAG AAA × Fail

Black Background



Color Contrast Check

Large Text (above 18pt) WCAG AA ✓ Pass

Any Text WCAG AA ✓ Pass

Large Text (above 18pt) WCAG AAA ✓ Pass

Any Text WCAG AAA ✓ Pass

If you want to check with other color combinations, try the [Color Contrast Checker](#).

Hex F0848E Background



This preview shows how black text looks on a background with the Hex color F0848E.



This preview shows how white text looks on a background with the Hex color F0848E.

Color Blindness Simulation

Color vision deficiency is a very complex topic, and I could not describe the different causes any better than Wikipedia does, so if you want to learn more, you should check out their [article about color blindness](#).

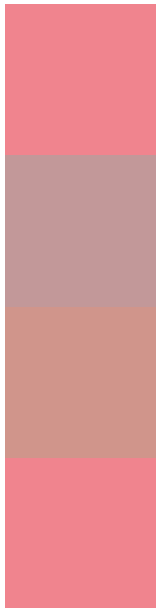
Dichromacy





Tritanopia
F0848E

Trichromacy



Original Color
F0848E

Protanomaly
C29899

Deuteranomaly
D0958B

Tritanomaly
F0848E

Monochromacy



Original Color
F0848E

Achromatopsia
A5A5A5

Achromatomaly
C0999D

CSS Examples

Text

The CSS property to change the color of the text to Hex F0848E is called "color". The color property can be set on classes, ids or directly on the HTML element.

This example shows how text in the color #F0848E looks like.

```
.text, #text, p{  
    color:#F0848E  
}
```

If you want to add a text shadow in that color use the text-shadow property, you can generate a text shadow directly with our [CSS Text Shadow Generator](#).

Here you see how black text with a 4 pixel #F0848E colored shadow looks like.

```
.shadow{ text-shadow: 4px 4px 2px #F0848E
}
```

Border

The CSS property to change the border of an element to Hex F0848E is called "border". The border property can be set on classes, ids or directly on the HTML element.

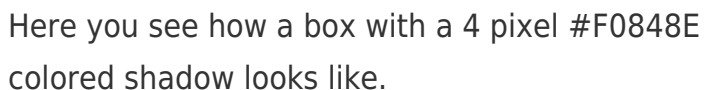
This example shows the color as border, it can be applied via the CSS property "border" or "border-color".

```
.border, #border, table{ border:4px solid
#F0848E }
```

If only the border color should be changed use the property `border-color`.

```
.border{ border-color:#F0848E }
```

If you want to add a box shadow in that color use:



Here you see how a box with a 4 pixel #F0848E colored shadow looks like.

```
.boxshadow{ -moz-box-shadow:4px 4px 4px  
4px #F0848E; -webkit-box-shadow:4px 4px  
4px 4px #F0848E; box-shadow:4px 4px 4px  
4px #F0848E }
```

Background

The CSS property to change the background color of an element to Hex F0848E is called "background". The background property can be set on classes, ids or directly on the HTML element.

```
.background, #background, body{  
background:#F0848E }
```

If only the background color should be changed can be used:

```
.background{ background-color:#F0848E }
```

This example shows the color as background, it is applied via the CSS property "background".

To optimize and compress your CSS code, you can use our [online CSS compressor and optimizer](#) based on csstidy. If you want to create a linear or radial gradient as background or border, check our [CSS Gradient Generator](#).

Hey! You found this booklet interesting? Support Converting Colors with the new Membership Option!

The pro membership hides all ads, plus gives you double the colors in the color bucket, and more awesome pro features!

[Learn more, Memberships starting at \\$2.50/m!](#)

**Follow me
on Twitter!**

@ConvertingColor